



Astro C40 TR Joystick Replacement

Don't abandon your Astro C40 TR controller if...

Written By: Pan



INTRODUCTION

Don't abandon your Astro C40 TR controller if it has some drift problems! With a new joystick module, some screwdrivers, and minor effort, it'll be as good as new.

Apart from being able to use a screwdriver, this guide requires no prerequisite on technical background.

You will need:

- An H.20 Hexagonal Screwdriver
- A 30mm TORX Screwdriver
- A joystick module for replacement

TOOLS:

[Moray Driver Kit](#) (1)

Step 1 — Joystick



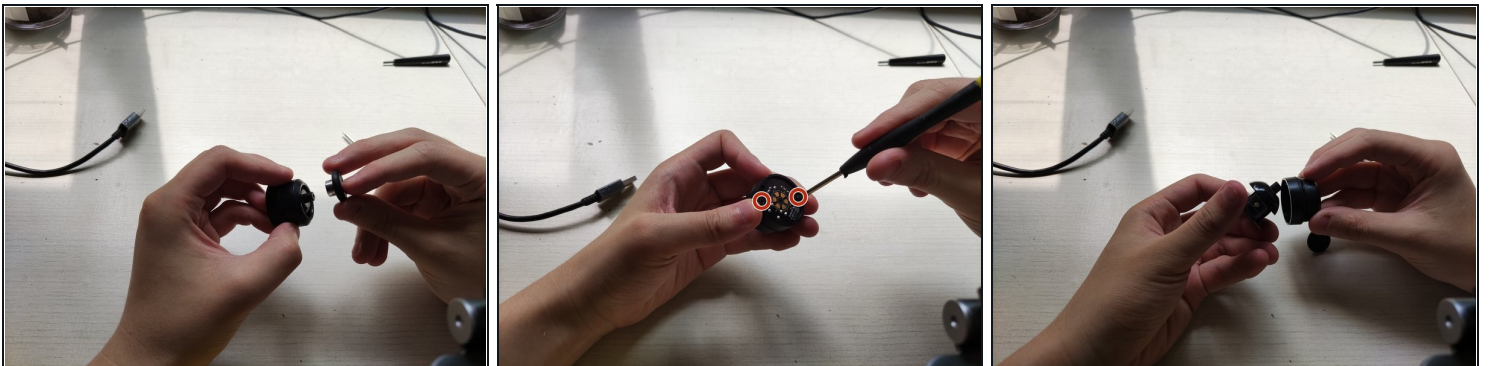
- Unplug your controller from the video game console.
- Turn the wireless mode off if it is activated on your controller.

Step 2



- Use an H.20 Hexagonal screwdriver to loosen the two screws on each joystick's side.
- Remove the face cover of the joystick by flipping the controller on its side.
 - ⓘ Don't panic if the joystick falls off! It can be placed back on.

Step 3



- Use the 30mm TORX Screwdriver to remove the screws from the module.
- Push on the top frame until it pops off of the module.
- ⓘ If you have a whole new joystick module, you can skip to step 6.

Step 4



- Connect the base frame replacement to the joystick module.
- Insert the top frame on the module until it clicks back together.

Step 5



- Reassemble the joystick module and plug it back into the controller.
- Make sure the replacement and base frame are tightly screwed together.
- Align the module and controller as you put joystick back together.

Step 6



- Reassemble the controller by placing the face cover back on.
- Tighten the screws on the face cover with the H.20 Hexagonal Screwdriver.

⚠ If it's difficult to tighten the screws, don't force it. The joystick and controller are probably not aligned correctly!

Step 7



- Recalibrate the controller so the new joystick can be detected by the console.
- Connect the controller to the console and activate wire-connect mode by clicking the controller's top right corner.
- Push the button on the back of the controller. Hold it until the controller vibrates. Release the button and repeat.

To reassemble your device, follow these instructions in reverse order.

