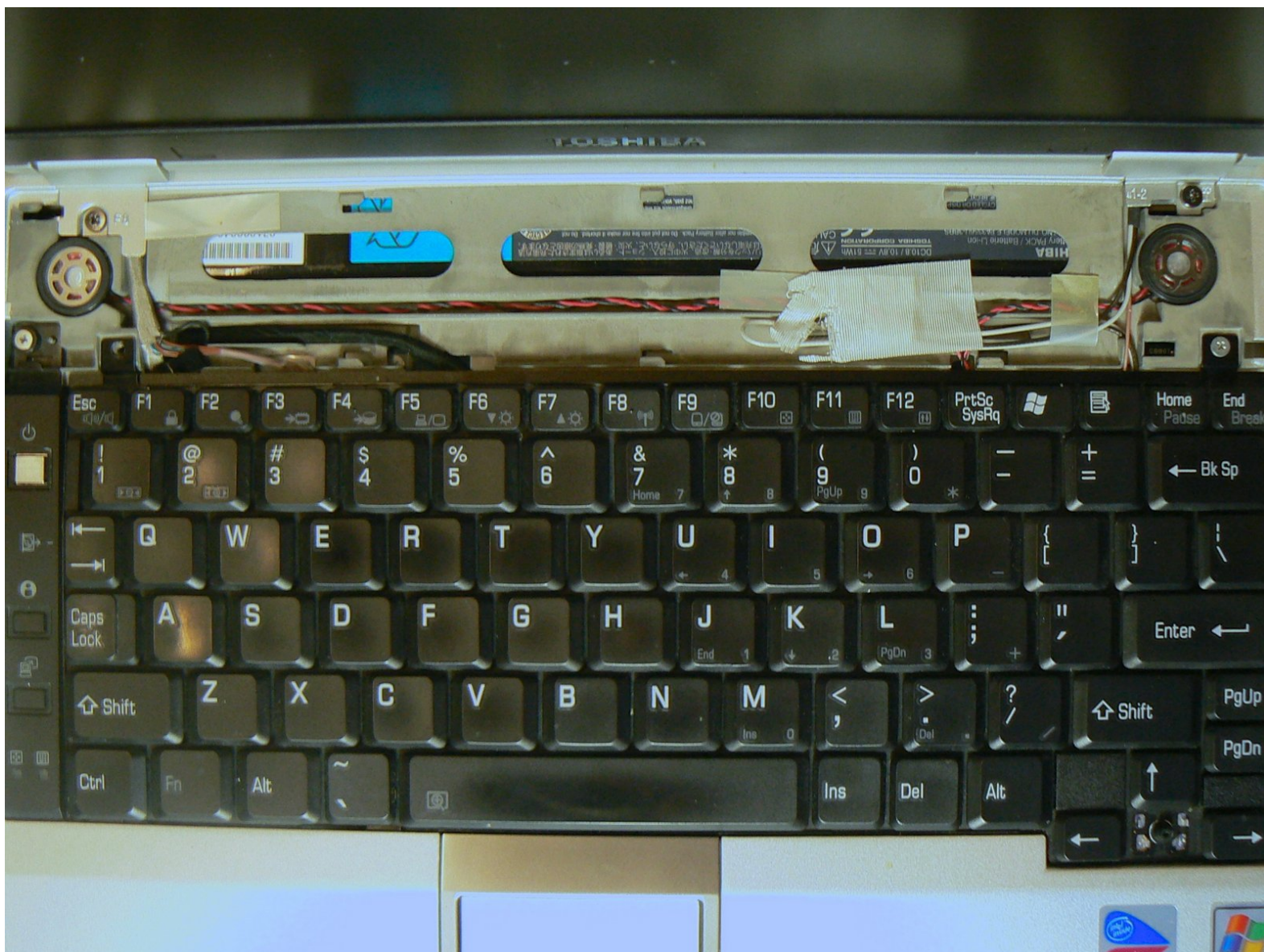




Toshiba Portege M300 Keyboard Replacement

This will demonstrate how to install a Toshiba Portege M300 keyboard.

Written By: Alison Wendt



INTRODUCTION

This guide goes through the steps needed to install a new keyboard. Attention to detail is required in order to reverse the steps for instillation of a new keyboard, returning each screw to the correct location.



TOOLS:

- [Phillips #1 Screwdriver](#) (1)
 - [iFixit Opening Tool](#) (1)
 - [Phillips #00 Screwdriver](#) (1)
 - [Phillips #000 Screwdriver](#) (1)
 - [T6 Torx Screwdriver](#) (1)
-

Step 1 — Battery



- Turn the computer over onto its back.

Step 2



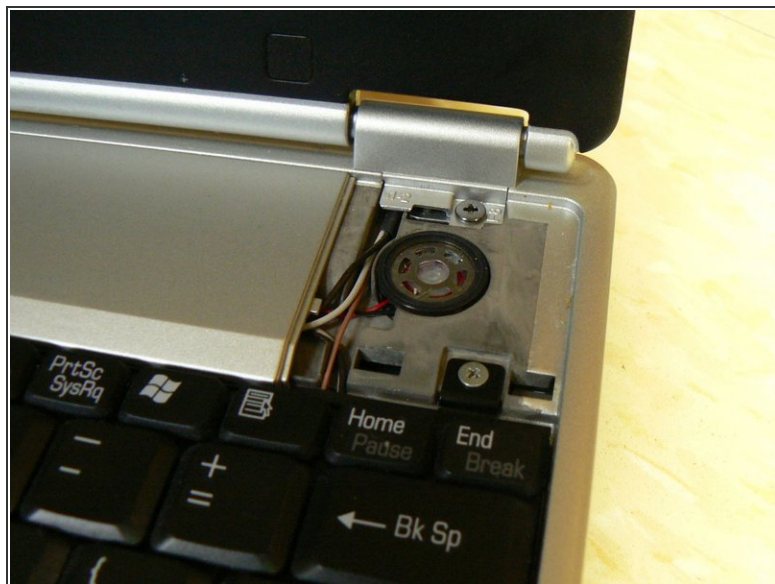
- Slide the lock on the left side to the unlock position.
- Slide the lock on the right side to the unlock position until there is a clicking sound.

Step 3



- Remove the battery by sliding it away from the laptop.
- ❗ Make sure the two locks from the previous step are in the unlocked position while sliding the battery away.

Step 4 — Keyboard



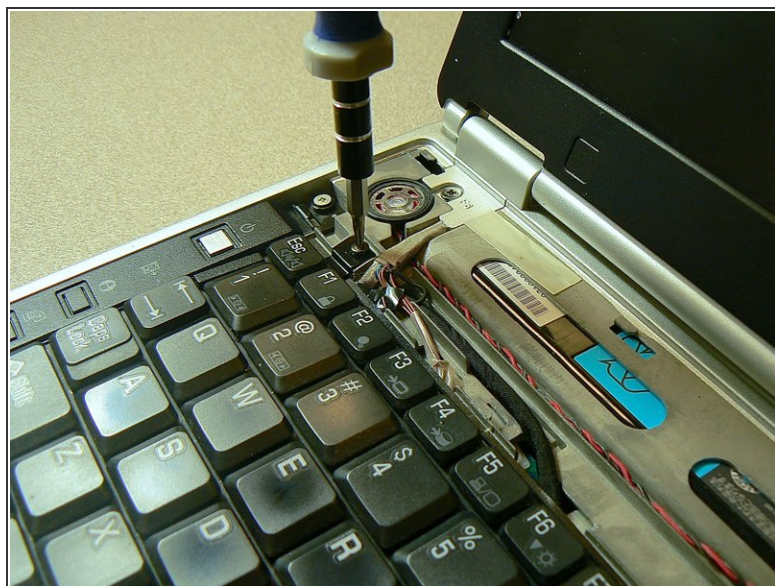
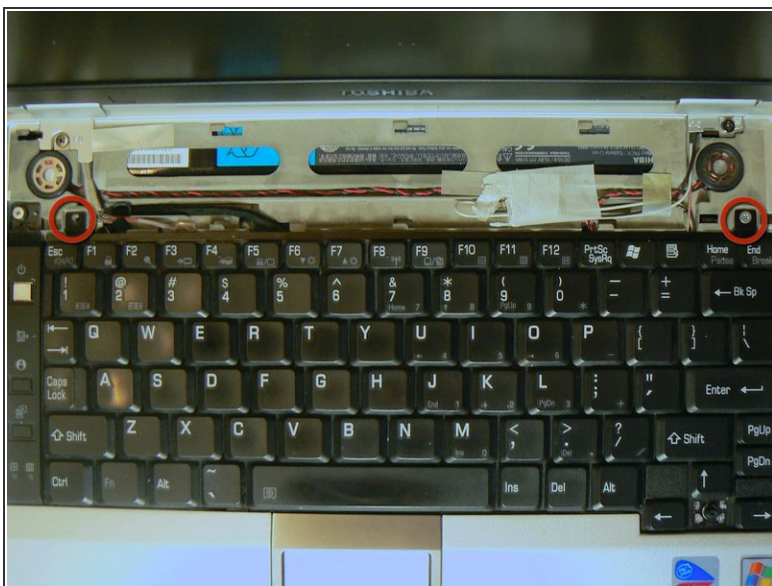
- Use a plastic opening tool to unsnap the right hand side speaker cover.

Step 5



- Remove the rest of the cover by sliding it to the right and lifting the edge.

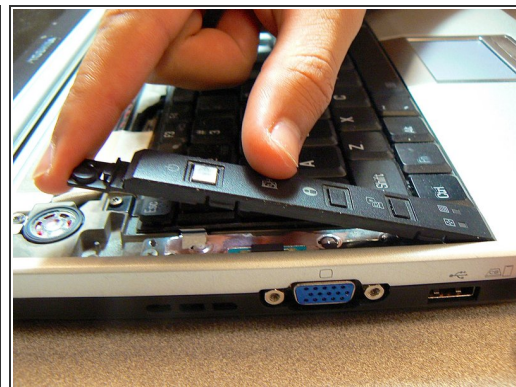
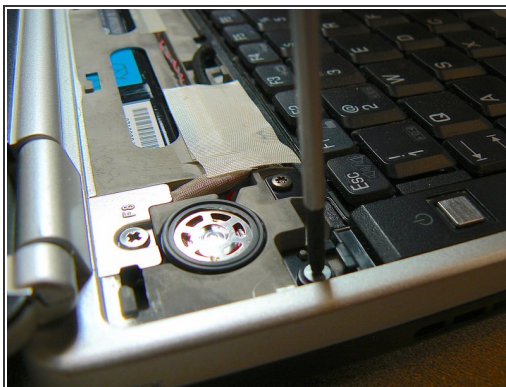
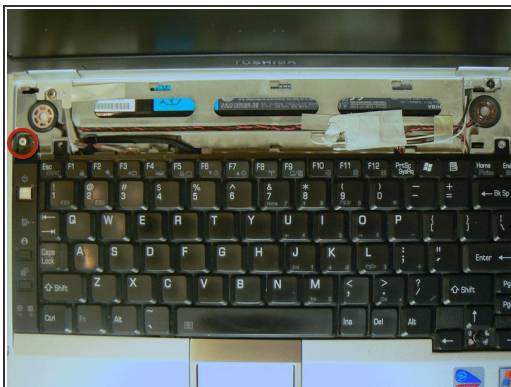
Step 6



- Use a Phillips head #00 screwdriver to remove the two silver screws at the top of the keyboard.

i Two 4.0 mm coarse thread screws.

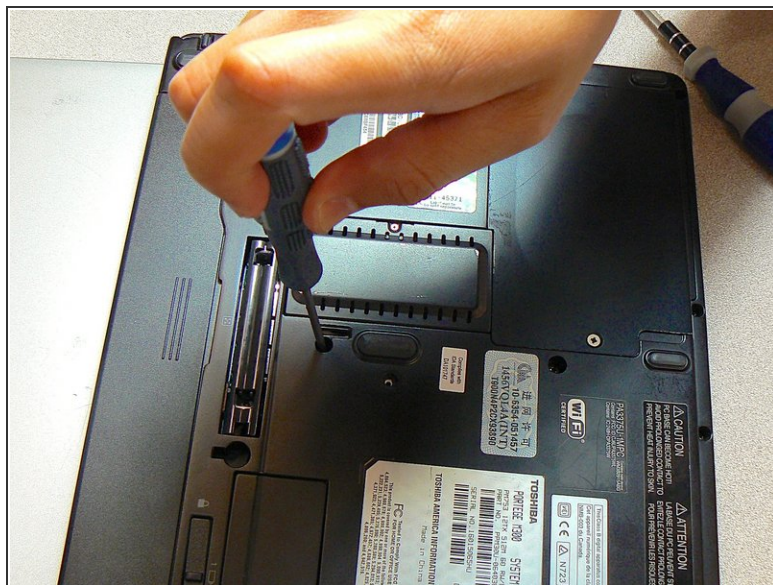
Step 7




- Remove the Torx screw holding the left keyboard tab in place, and lift it to release.

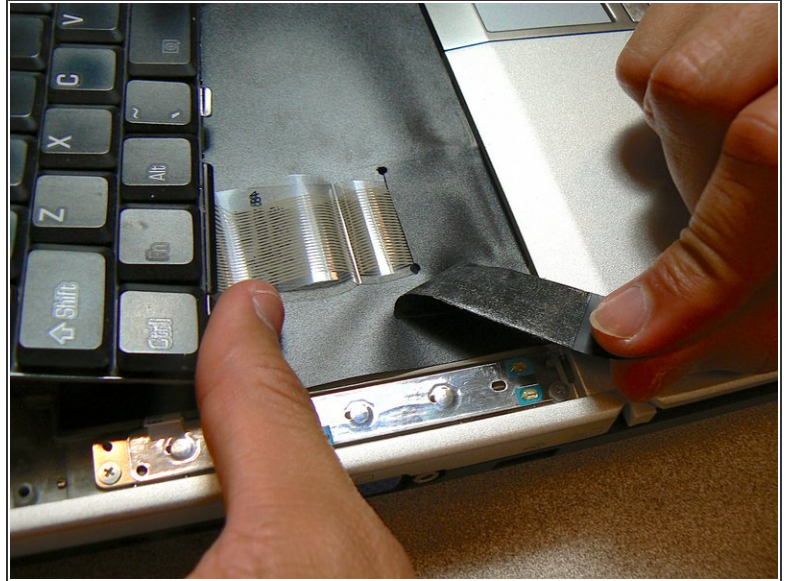
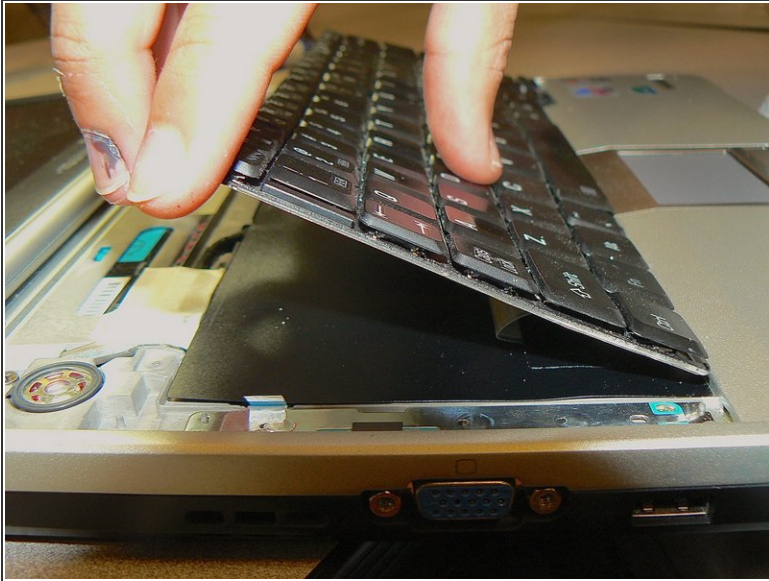
 One Torx T6 fine thread screw.

Step 8



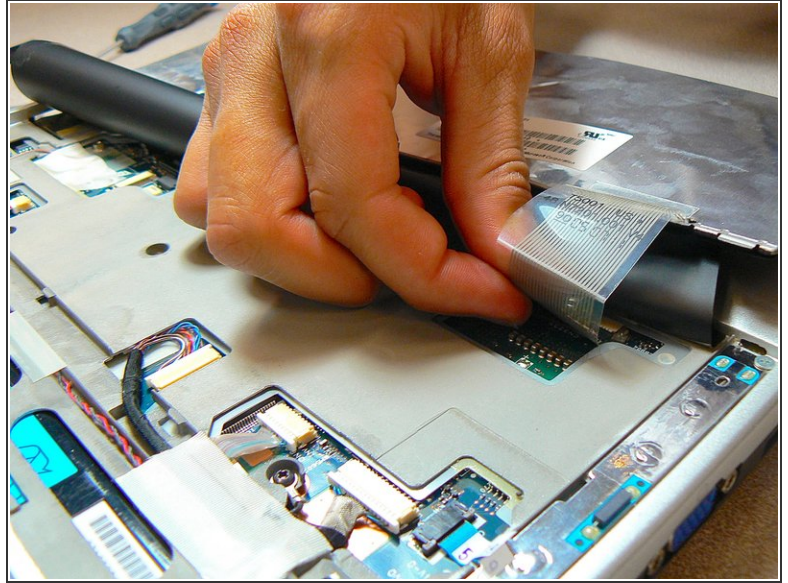
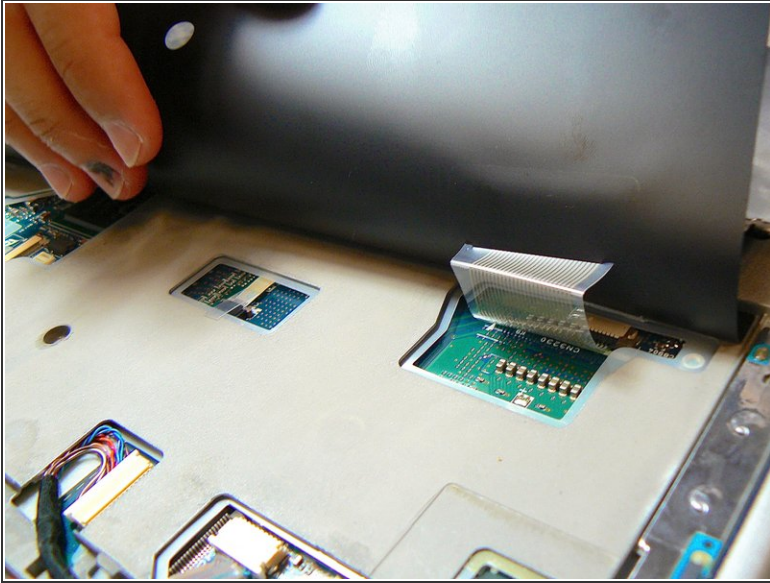
- Turn the computer over on to the back.
 - Remove the middle screw with a Phillips head #000 screwdriver.
-  One 7.5 mm fine thread screw.

Step 9



- Turn the computer over to the front.
- Gently pull at the top and bottom to remove the keyboard.
- Peel off the black tape that holds the connection wire.

Step 10



- Flip the keyboard over and carefully unplug the connection wire.
- Reverse the steps for proper installation of the new keyboard.

To reassemble your device, follow these instructions in reverse order.