



Logitech MX Keys Battery Replacement

Use this guide to replace a worn-out or dead...

Written By: Spencer Day



INTRODUCTION

Use this guide to replace a worn-out or dead battery in your Logitech MX Keys wireless keyboard.

Lithium-ion batteries have a limited lifespan. If your keyboard dies quickly and doesn't hold a charge, it may be time to replace the battery.

If possible, follow this guide **after your battery has fallen below 15% charge**. While your MX Keys keyboard has a relatively small battery, any charged battery is a potential safety hazard if accidentally bent or punctured.

If your battery looks puffy or swollen, [take extra precautions](#).

TOOLS:

[iOpener](#) (1)
[Hair Dryer](#) (1)
[Spudger](#) (1)
[iFixit Opening Picks \(Set of 6\)](#) (1)
[Phillips #00 Screwdriver](#) (1)
[Tweezers](#) (1)
[Isopropyl Alcohol](#) (1)
[Microfiber Cleaning Cloths](#) (1)

PARTS:

[Tesa 61395 Tape](#) (1)

Step 1 — Prepare your keyboard for disassembly



- Slide the keyboard's power switch into the **OFF** position.
 - ⓘ A red indicator should be visible beneath the switch.
- Unplug all cables from your keyboard.
- Lay your keyboard down with the feet facing up on a clean work surface.
 - ⓘ If your work surface may scratch the keyboard, place a soft towel under it.

Step 2 — Remove the feet



- [Heat an iOpener](#) and lay it on the top left foot for one minute.
 - ⓘ Alternatively, you can [use a hair dryer](#) on the **Low** heat setting to soften the adhesive.

⚠ If you're using a hair dryer, **only heat the feet a few seconds at a time** or you may warp the plastic.

Step 3



ⓘ The foot should come up without much force. If it feels stuck, apply more heat and try again.

- Insert the point of a spudger under an end of the foot.
 - Push the spudger underneath the foot and lift until you can grip it with your fingers.
 - Peel the foot up and remove it.
 - **Repeat the previous two steps to remove the remaining feet.**
- ⓘ If you're just replacing the battery, you only need to remove the feet along the top edge.

Step 4 — Reassembly information



☑ To install a new foot during reassembly:

- Use a pair of angled tweezers to peel up and remove *all* the plastic film from the foot recesses.
- Use isopropyl alcohol and a microfiber cloth to thoroughly clean all adhesive residue from the recesses. Allow the surface to completely dry.
- Remove the feet from their backing and firmly press them into place.

Step 5 — Remove the battery cover



ⓘ Plastic film may be covering the screws in the top edge foot recesses.

- Use the pointed end of a spudger to poke through each film so you can access the screw underneath.

Step 6



- Use a Phillips screwdriver to remove the three 7.6 mm-long screws securing the battery cover.

Step 7



❗ Plastic clips secure the battery cover.

- Insert an opening pick between the top edge of the battery cover and keyboard.
- Slide the clip along the top edge to release the clips.

Step 8



- Insert an opening pick between the bottom edge of battery cover and keyboard.
- Slide the pick along the bottom edge to release the remaining clips.

Step 9



- Remove the battery cover.
- ☑ During reassembly:
 - Place the battery cover onto the keyboard assembly so the screw holes line up with their posts.
 - Press down firmly along the battery cover to engage its clips.
 - ① You should feel and hear distinct "clicks" as the clips engage.

Step 10 — Remove the battery



- Use a pair of angled tweezers to *firmly* grip the battery connector and slide it straight out of its socket.
 - ① If you're having trouble, gently rock the connector side-to-side to help loosen it.
- ☑ During reassembly:
 - Insert the connector into its socket so the side with raised plastic in the center is facing up.
 - Push on the edges of the connector with the flat end of a spudger until it's fully seated in the socket.

Step 11



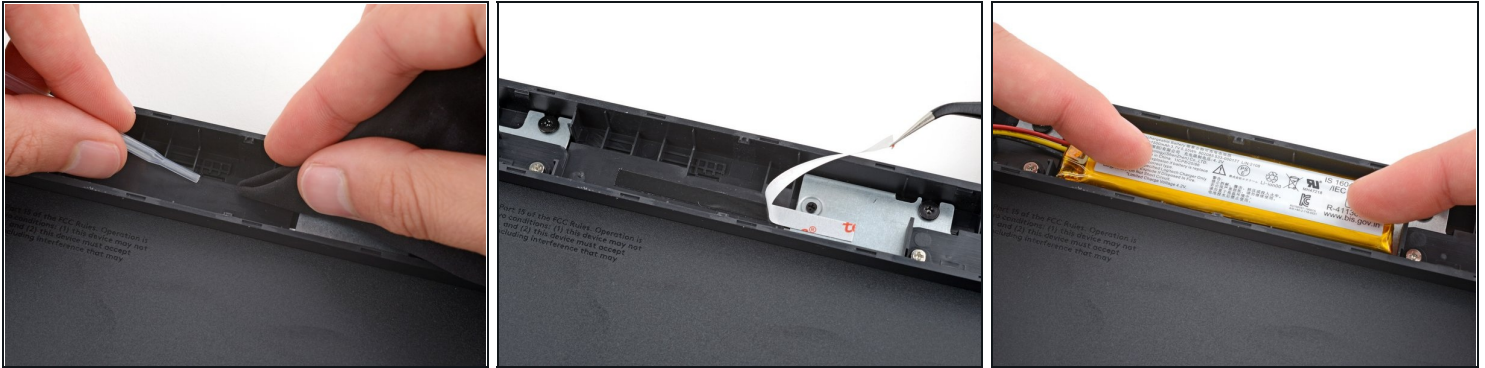
- Pull the three battery cables out of their channel in the keyboard.
- ☑ During reassembly, route all three cables through their channel so they're on top of each other.

Step 12



- Insert the flat end of a spudger underneath the right edge of the battery, opposite the cables.
- Slide the spudger underneath the battery and gently lift to separate the adhesive securing it to the keyboard.
- ⚠ Make sure you push the spudger **underneath** the battery and not **into** it. *Don't bend or deform the battery.*
- ⓘ If the battery isn't separating, apply a few drops of isopropyl alcohol (>90%) to its edge and slightly tilt the keyboard. Wait one minute for the alcohol to soften the adhesive and try again.
- Remove the battery.

Step 13 — Reassembly information



✦ To install a replacement battery:

- Use a spudger to remove any chunks of adhesive from the battery recess.
- Use isopropyl alcohol (>90%) and a microfiber cloth to clean all adhesive residue from the recess.
- If your replacement battery doesn't come with tape pre-installed, apply [double-sided tape](#) to the battery recess (**not** directly to the battery).
- If your replacement battery has adhesive pre-installed, remove the plastic liner.

To reassemble your device, follow the above steps in reverse order.

Take your e-waste to an [R2 or e-Stewards certified recycler](#).

Repair didn't go as planned? Try some [basic troubleshooting](#), or ask our [Answers community](#) for help.