



How to Reset the Automatic Mechanism in an Audio Technica AT-LP60BK Turntable

This guide demonstrates how to reset the automatic mechanism of the Audio Technica AT-LP60BK Turntable.

Written By: Devin Hoopes



INTRODUCTION

This guide will show you how to reset the automatic mechanism of your Audio Technica AT-LP60BK turntable's needle. This fix involves no replacement parts and is an incredibly easy fix to execute. The one tool you will need is a Phillips head screwdriver. Use this screwdriver to unscrew the central screw in the middle white gear. Have a cup or bin ready to secure the screw and make sure to carefully remove the central white gear revealing the automatic mechanism. Carefully handle the parts of the turntable disk to prevent any parts from breaking.



TOOLS:

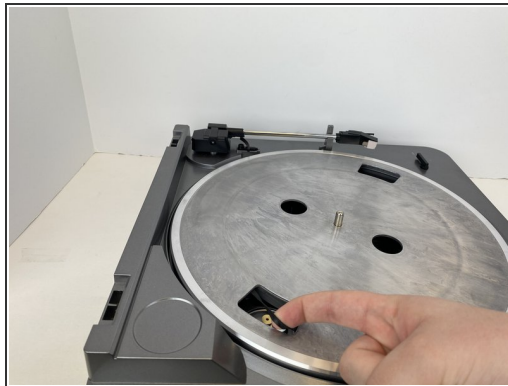
- [Phillips #00 Screwdriver](#) (1)

Step 1 — How to Reset the Automatic Mechanism in an Audio Technica AT-LP60BK Turntable



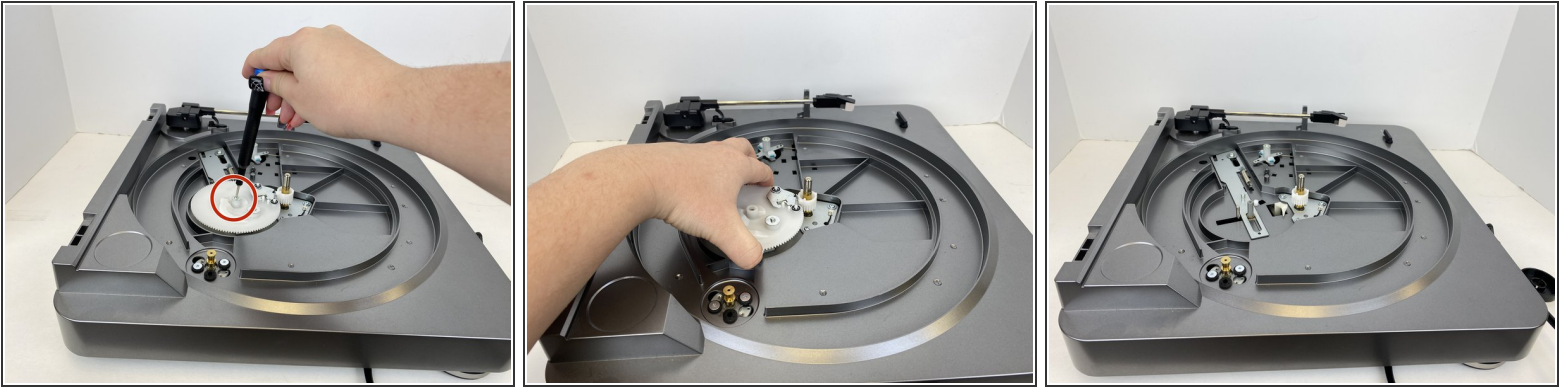
- Carefully remove the plastic cover and set aside.

Step 2



- Remove the pad if there is one.
- Spin the turntable until the belt and drive motor can be seen through a hole.
- Gently pull the belt off of the motor, and make sure that the belt doesn't bend or flip over.
- Take off the turntable platter and set aside.

Step 3



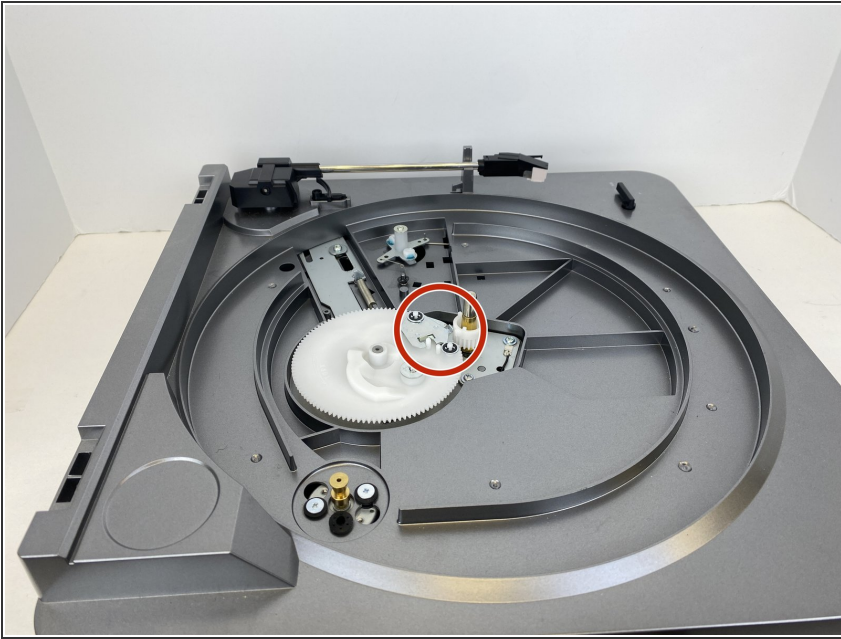
- Remove the single screw from the middle white gear with a Phillips #00 screwdriver.
- i* Have a cup or bin so you don't lose the screw!
- Gently pull the gear out, revealing the automatic mechanism.

Step 4



- Push the metal part away from the center. It should click into place.
- Push the small metal part back to the center, towards the gear axle.
- Push the metal part inward, close to the gear's mounting point.

Step 5



- Replace the gear, making sure that the the metal latch on the gear is pushed back.
- ⓘ The central shaft should spin freely without hooking the gear.
- ★ Don't forget to put the band back on the drive motor when reassembling.

To reassemble your device, follow these instructions in reverse order.