



How to Open the Rotor Riot

How to open the Rotor Riot controller for repairs and modding.

Written By: Adriana Zwink



INTRODUCTION

Use this guide to open the Rotor Riot controller for repairs and modding.

TOOLS:

- [Spudger](#) (1)
 - [TR6 Torx Security Screwdriver](#) (1)
-

Step 1 — Remove the iPhone mount



- Use your fingers to remove the screw on the back side of the controller securing the iPhone mount.
- Remove the iPhone mount.

Step 2 — Unscrew the back cover



- Use a T6 Torx screwdriver to remove the eight 9.2 mm-long screws securing the back cover.

⚠ Don't try to remove the back cover all the way yet! It's still connected to the mainboard.

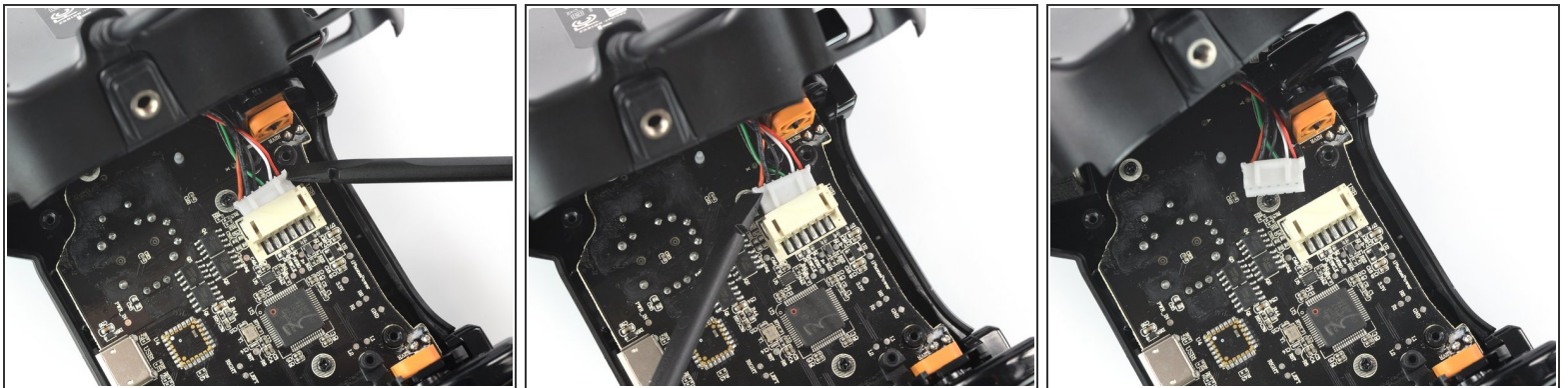
Step 3 — Swing open the back cover



- Lift up the back cover of the controller.
- Lift the back cover to a 45 degree angle and place it next to the controller.

 **Don't strain the interconnect cable during this procedure.**

Step 4 — Disconnect the phone connector cable



- Use a spudger to disconnect the phone connector cable from the mainboard.

Step 5 — Remove the back cover



- Remove the back cover.

To reassemble your device, follow these instructions in reverse order.

Take your e-waste to an [R2 or e-Stewards certified recycler](#).

Repair didn't go as planned? Check out our [Answers community](#) for troubleshooting help.