



Redmi Note 9 Pro Loudspeaker Replacement

How to replace the loudspeaker on a Xiaomi Redmi Note 9 Pro.

Written By: Dominik Schnabelrauch



INTRODUCTION

Use this guide to replace the loudspeaker on your Xiaomi Redmi Note 9 Pro.

You'll need replacement adhesive to reattach components when reassembling the device.



TOOLS:

- [iOpener](#) (1)
- [Suction Handle](#) (1)
- [iFixit Opening Picks \(Set of 6\)](#) (1)
- [Isopropyl Alcohol \(90% or Greater\)](#) (1)

optional

- [Microfiber Cleaning Cloths](#) (1)

optional

- [Heat Gun](#) (1)

optional

- [Phillips #00 Screwdriver](#) (1)

- [Spudger](#) (1)

- [ESD Safe Tweezers Blunt Nose](#) (1)

optional



PARTS:

- [Precut Adhesive Card](#) (1)

optional

- [iFixit Adhesive Remover \(for Battery, Screen, and Glass Adhesive\)](#) (1)

optional

Step 1 — Heat the rear glass



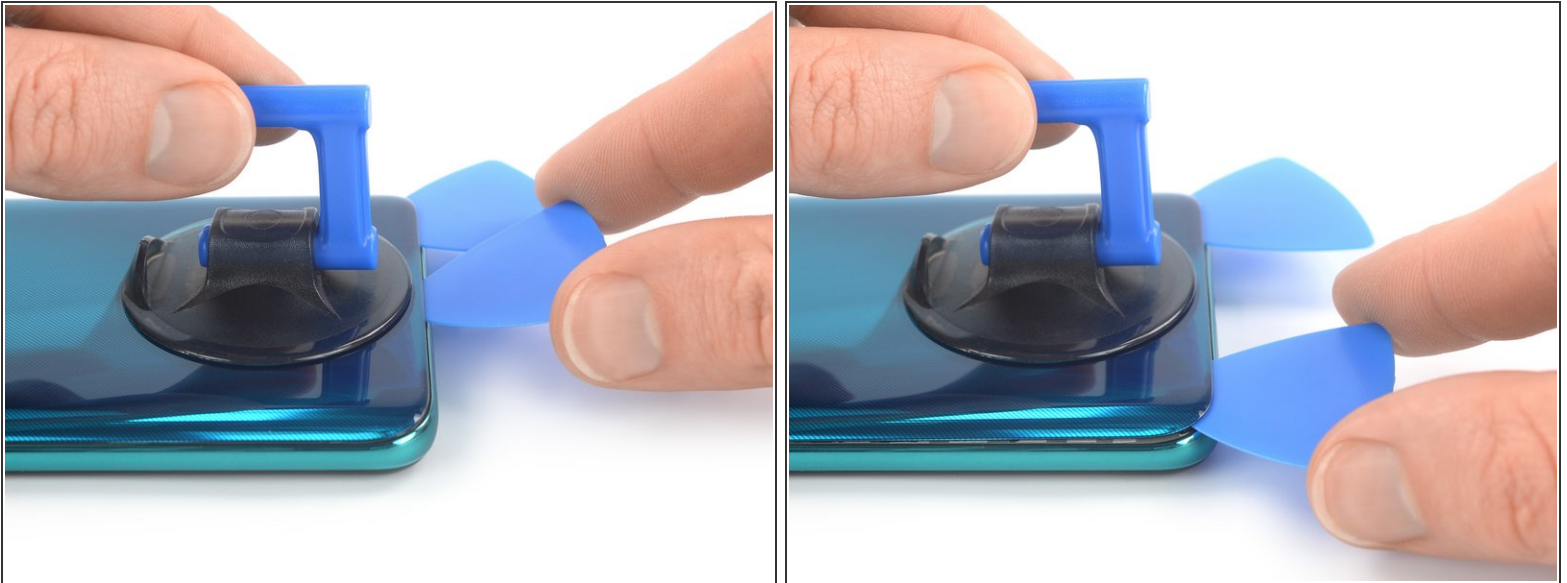
- [Prepare an iOpener](#) and apply it to the rear glass for at least two minutes to loosen the adhesive underneath.
- ⓘ A hair dryer, heat gun, or hot plate may also be used, but be careful not to overheat the phone—the display and internal battery are both susceptible to heat damage.

Step 2 — Insert an opening pick



- Secure a suction handle to the bottom edge of the rear glass, as close to the edge as possible.
 - ❗ If the rear glass is cracked, the suction handle may not stick. Try [lifting it with strong tape](#), or superglue the suction handle in place and allow it to cure so you can proceed.
- Lift the rear glass with the suction handle to create a small gap between the back cover and the frame.
 - ❗ In case you have trouble creating a gap, apply more heat to further soften the adhesive. Follow the [iOpener](#) instructions to avoid overheating.
- Insert an opening pick into the gap you created.
- Slide the opening pick to the bottom right corner to slice the adhesive.
- Leave the opening pick in place to prevent the adhesive from resealing.

Step 3 — Slice the adhesive



- Insert a second opening pick at the bottom edge of your phone.
- Slide the opening pick to the bottom left corner to slice the adhesive.
- Leave the opening picks in place to prevent the adhesive from resealing.

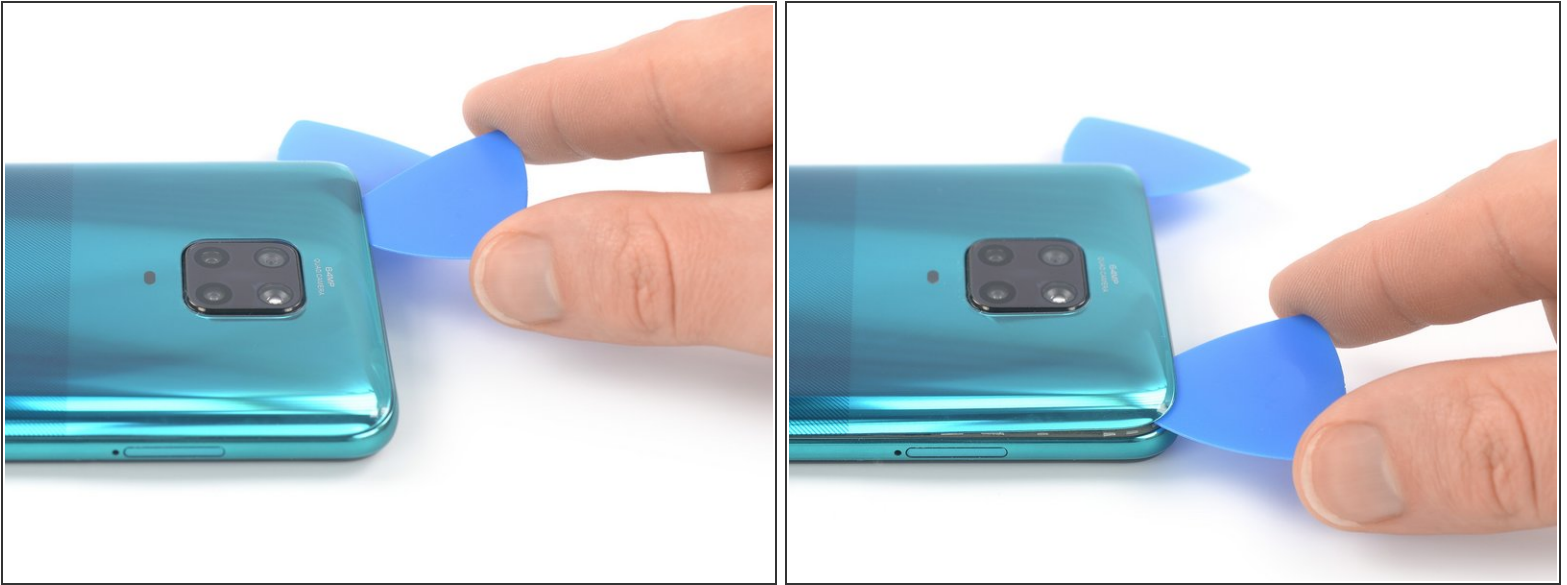
Step 4 — Slice the adhesive



i If the adhesive becomes hard to cut, it has most likely cooled down. [Use your iOpener](#) for one to two minutes to reheat it.

- Insert a third opening pick at the bottom left corner of your phone.
- Slide the opening pick along the left edge of your phone to slice the adhesive.
- Leave the opening pick in the top left corner to prevent the adhesive from resealing.

Step 5



- Insert a fourth opening pick underneath the top left corner of your phone.
- Slide the opening pick along the top edge to slice the adhesive.
- Leave the opening pick in the top right corner to prevent the adhesive from resealing.

Step 6



- Insert a fifth opening pick underneath the top right corner.
- Slide the opening pick along the right edge of the rear glass to slice the remaining adhesive.

Step 7 — Remove the rear glass



- Remove the rear glass.
- ✦ Apply new adhesive where necessary after cleaning the relevant areas with isopropyl alcohol (>90%).
- ✦ [Secure the new rear glass with pre-cut adhesive](#) or double-sided adhesive tape. After installing the rear glass, apply strong, steady pressure to your phone for several minutes to help the adhesive form a good bond—a stack of heavy books works well.

Step 8 — Unfasten the motherboard cover screws



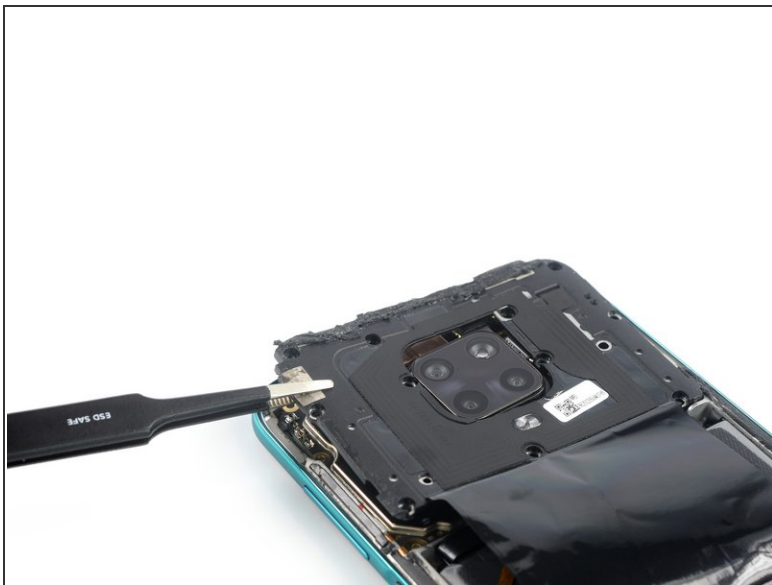
- Use a Phillips screwdriver to remove the eleven 3.9 mm-long screws securing the motherboard cover.

Step 9 — Pry up the motherboard cover



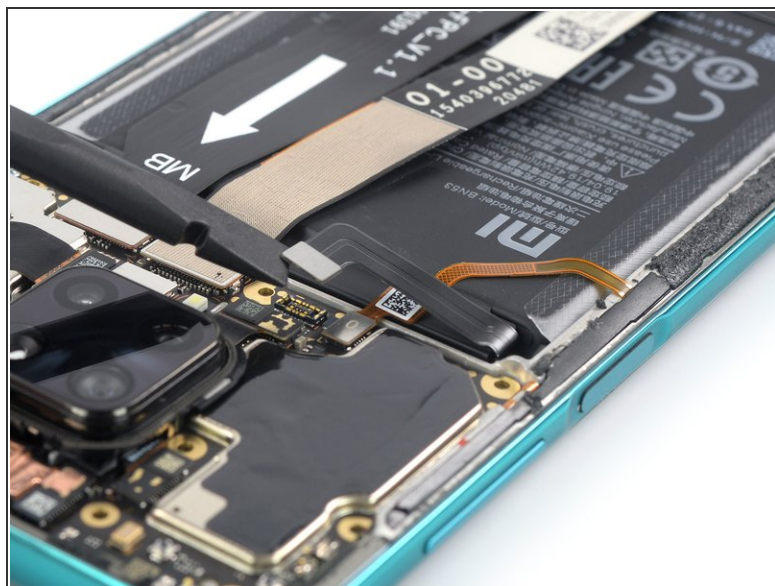
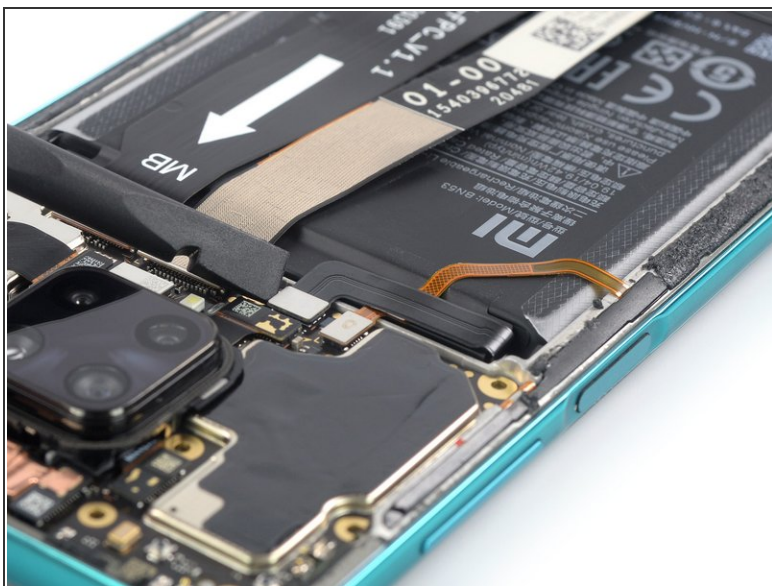
- Insert the tip of an opening pick underneath the left edge of the motherboard cover.
- Flip the opening pick sideways to pry up the motherboard cover.

Step 10 — Remove the motherboard cover



- Use a pair of tweezers or your fingers to remove the motherboard cover.

Step 11 — Disconnect the battery cable



- Use a spudger to disconnect the battery cable by prying the connector straight up from its socket.

Step 12 — Unfasten the loudspeaker assembly screws



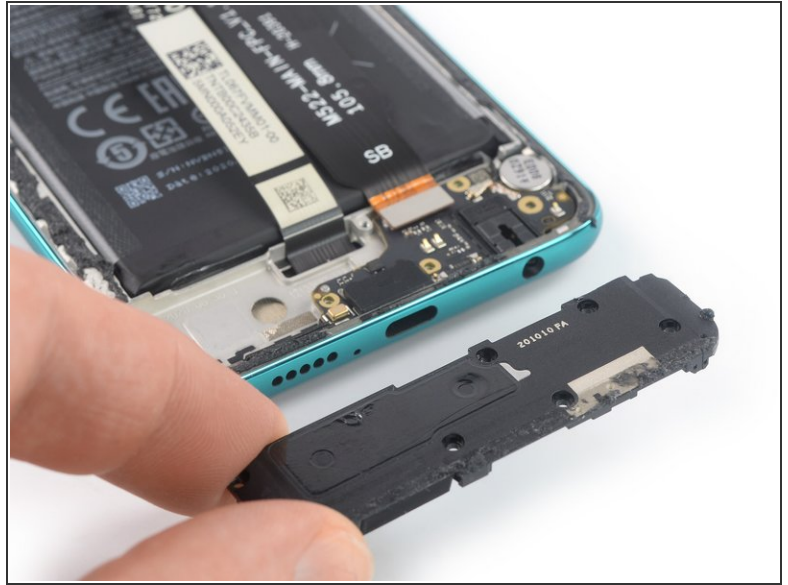
- Use a Phillips screwdriver to remove the seven 3.9 mm-long screws securing the loudspeaker assembly.

Step 13 — Pry up the loudspeaker assembly



- Insert an opening pick into the gap between the top edge of the loudspeaker assembly and the battery.
- Use your opening pick to pry up the loudspeaker assembly.

Step 14 — Remove the loudspeaker assembly



- Remove the loudspeaker assembly.

- ☑ During reassembly apply new adhesive where it's necessary after cleaning the relevant areas with isopropyl alcohol (>90%).

If possible, turn on your device and test your repair before installing new adhesive and resealing.

Compare your new replacement part to the original part—you may need to transfer remaining components or remove adhesive backings from the new part before installing.

To reassemble your device, follow these instructions in reverse order.

Take your e-waste to an [R2 or e-Stewards certified recycler](#).

Repair didn't go as planned? Try some [basic troubleshooting](#), or ask our [Answers community](#) for help.