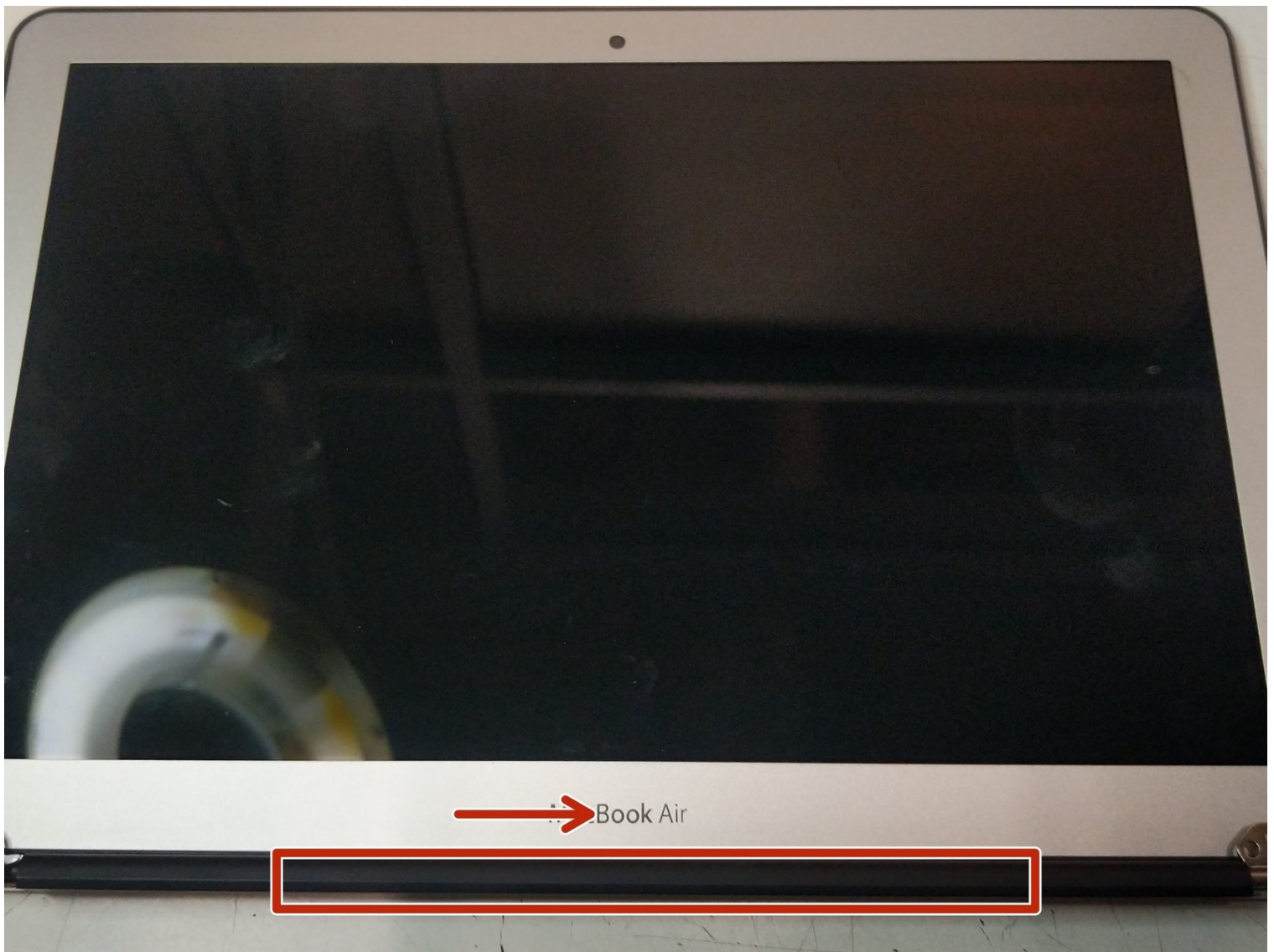




MacBook Air 13" Bluetooth/Wifi Antennae /Webcam /Display Cable/Hinge Replacement

The MacBook Air hinges house the Webcam,...

Written By: Emmett Normand



INTRODUCTION

The MacBook Air hinges house the Webcam, Wifi/Bluetooth Antennae and the Display Connectors within them. This guide will show you how to remove the bezel and replace the hinges and also replace these connectors.



TOOLS:

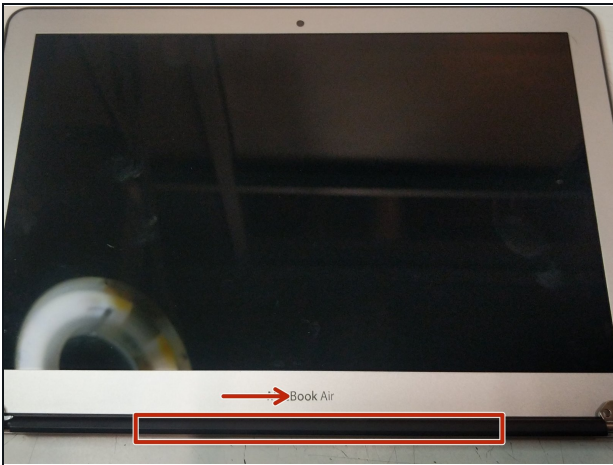
[Heat Pad](#) (1)
[Spudger](#) (1)
[T8 Torx Security Bit Screwdriver](#) (1)
[Phillips PH000 Screwdriver](#) (1)
[ESD Safe Blunt Nose Tweezers](#) (1)



PARTS:

[MacBook Air 13" \(Mid 2012-2017\) Display LVDS Cable](#) (1)
[3M 4095 VHB Tape](#) (1)

Step 1 — Chin and Display Connector Removal



- Slide the plastic chin to the right and off the display.

Step 2



- Remove the three T8 torx screws from the bracket

⚠ This screw hole pattern is different for older MacBook Airs

Step 3 — Heat and Remove Bezel



- Remove the gasket that runs along the perimeter of the display. You can use a spudger to pry up the bezel and tweezers to pull it out.

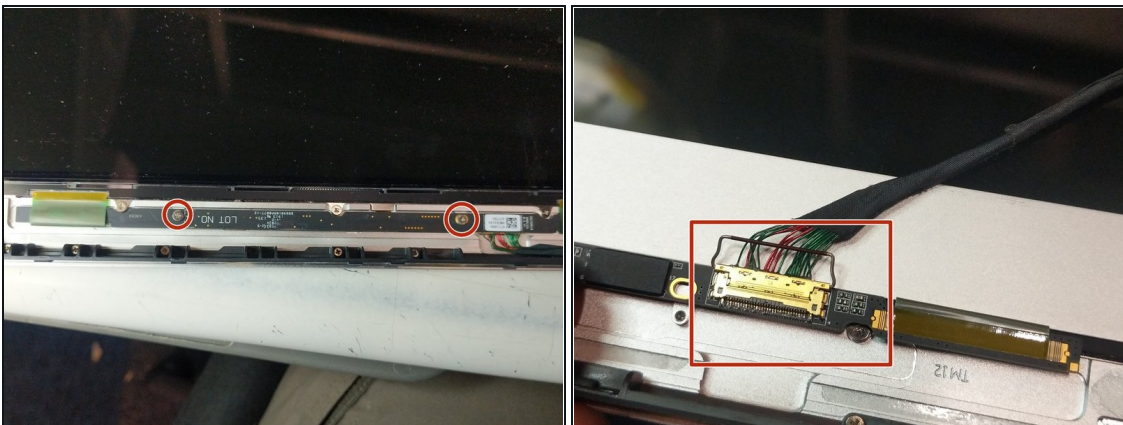
⚠ Be careful to not tear your gasket

☑ Apply Heat to loosen the adhesive, in a pinch you do not necessarily need it; but it always helps with adhesives.

- Begin Prying from the right corner as pictured.

⚠ The Webcam and Antennae are under the left side of the bezel.

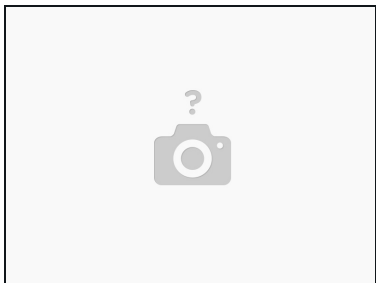
Step 4 — Replacement of your Right Hinge



- Remove the two PH000 screws holding in the LCD board in
- To replace the display connection you can open the retaining latch and disconnect the cable.

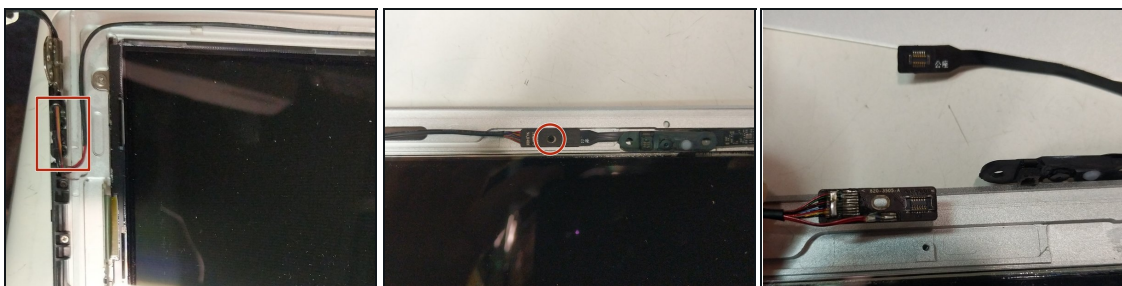
ⓘ If you're replacing the Webcam/ Wifi Antennae Continue on to the next step.

Step 5



⚠ WARNING: There is a ribbon cable attached to the center of the board. be very careful not to damage this

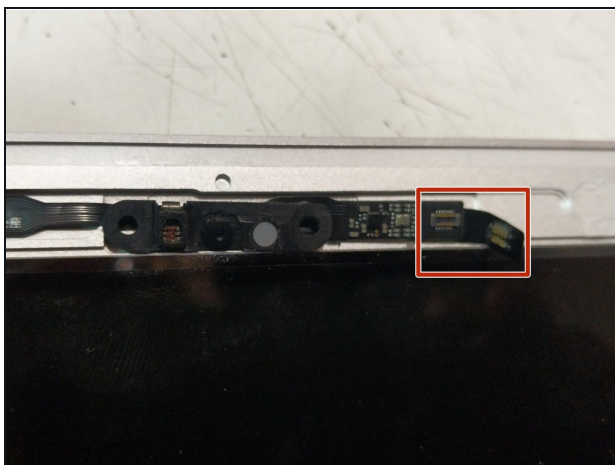
Step 6



i If you're just replacing your Webcam skip this step

- Remove the three T8 Torx screws
- Remove the PH000 screw
- Flip the board over and disconnect it.
- The Wifi / Bluetooth / Webcam cable can now be removed and replaced.

Step 7



- Disconnect your webcam connection,

⚠ The webcam is held in by the bezel and a small bit of adhesive on the backside of the webcam

To reassemble your device, follow these instructions in reverse order. I recommend cleaning it with alcohol and using VHB tape for glueing the bezel back on.