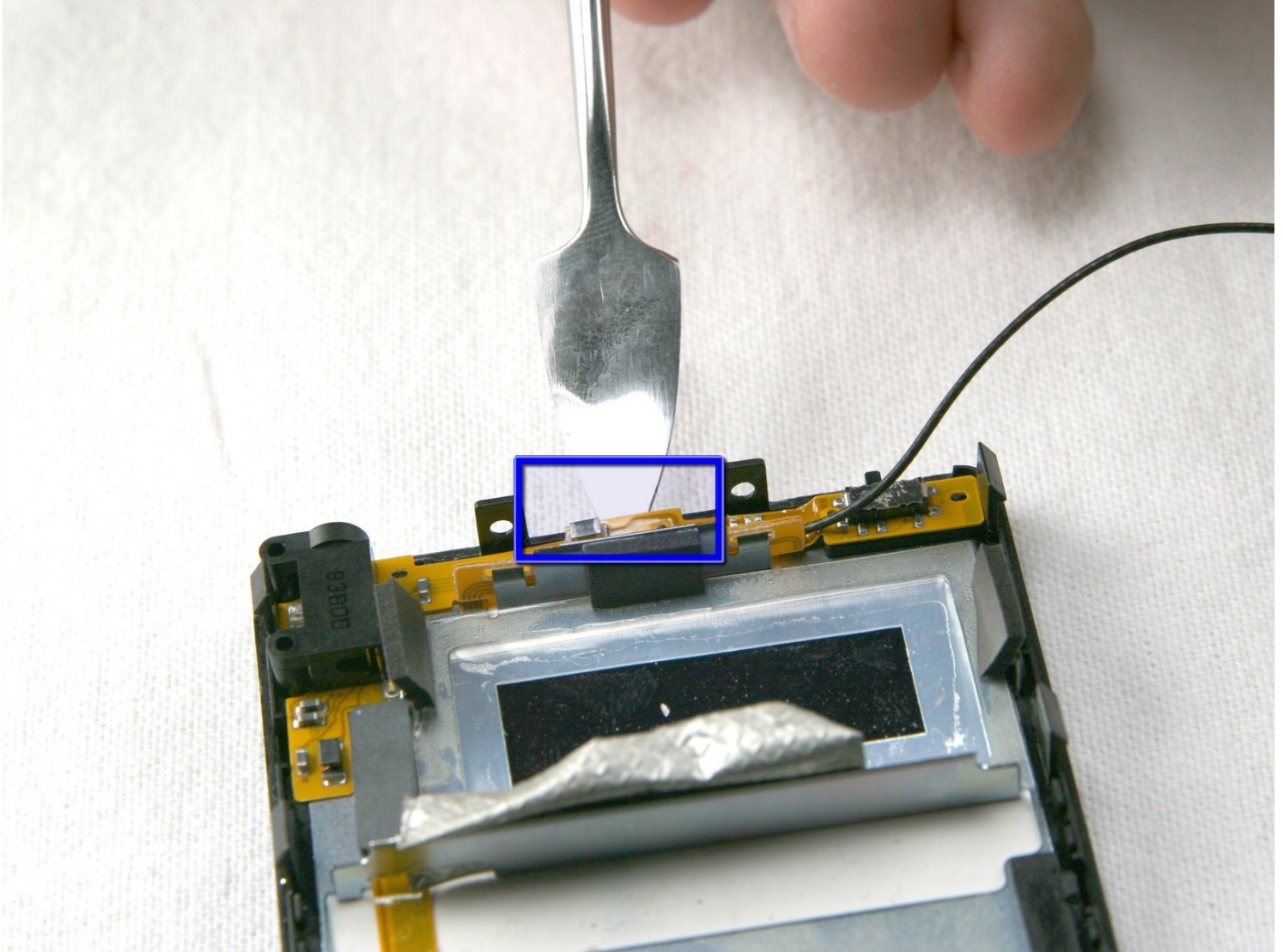




Microsoft Zune 80 Screen Replacement

This guide can be used to remove and replace...

Written By: nwiswell



INTRODUCTION

This guide can be used to remove and replace the LCD screen of the Zune 80GB.

TOOLS:

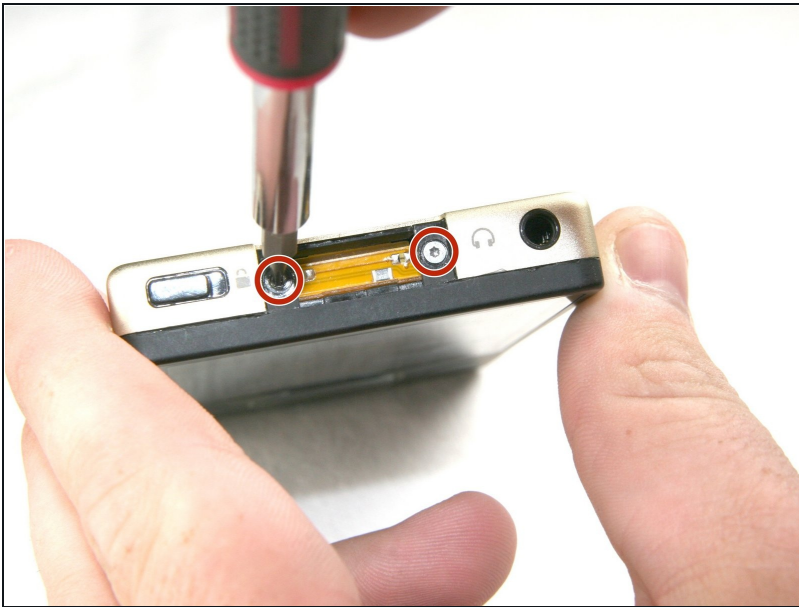
Metal Spudger (1)

Step 1 — Case



- Use a metal spudger or Zune opening tool to remove the small silver plastic cap on top of the device.

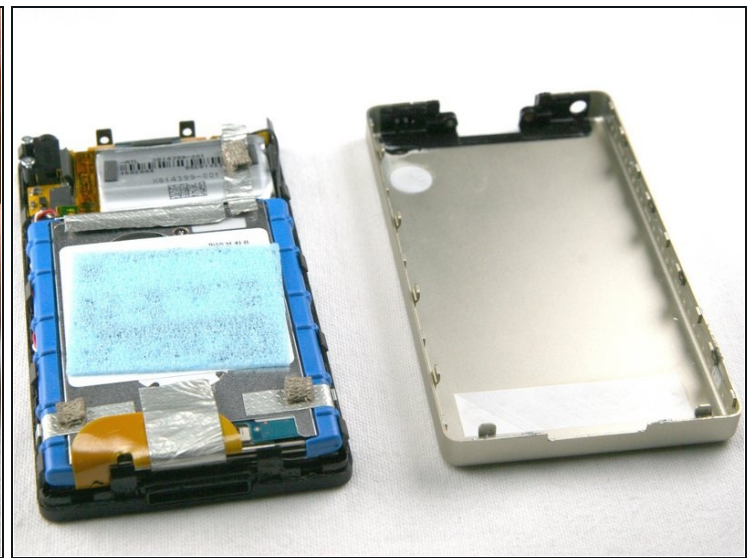
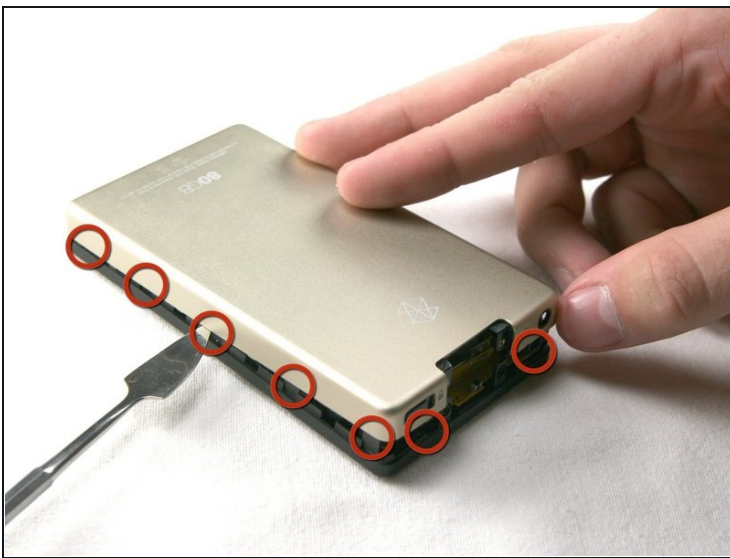
Step 2



- There are two T3 screws under the cap. Remove both with a T3 screwdriver.

⚠ Be careful with removing these screws! These screwheads are prone to breaking.

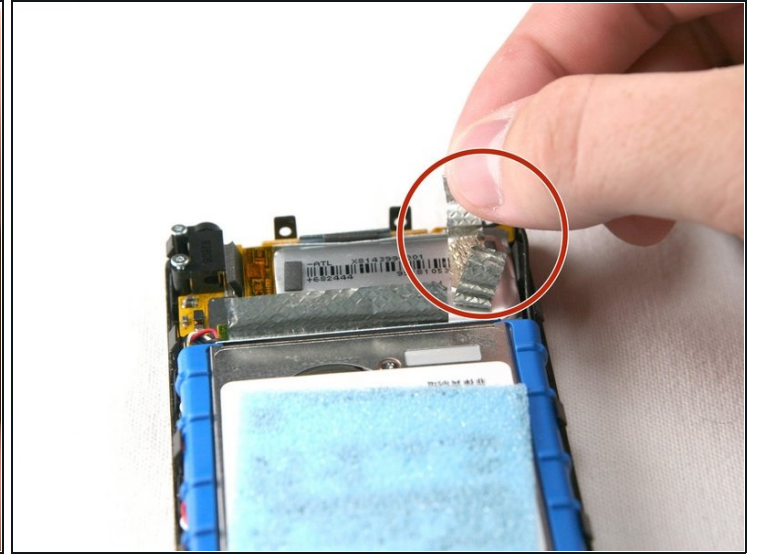
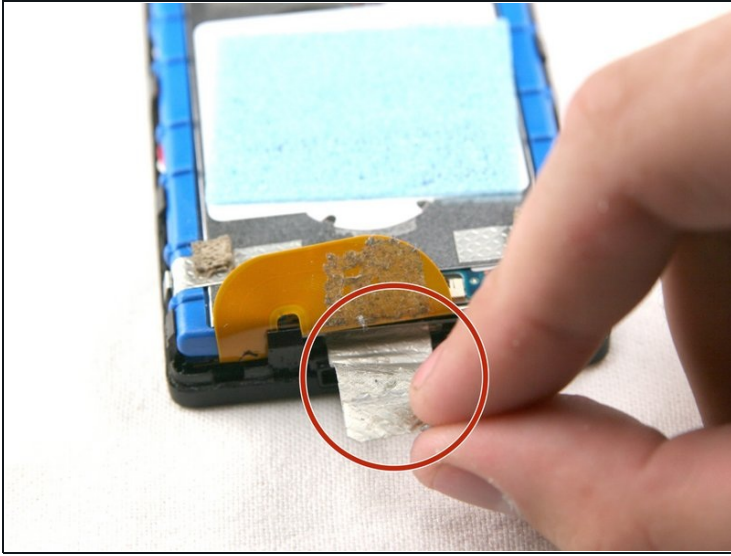
Step 3 — Remove the Casing



- Using a metal spudger or Zune opening tool, remove the aluminum backing starting from the top. There are 5 clips on each side and two on the bottom.

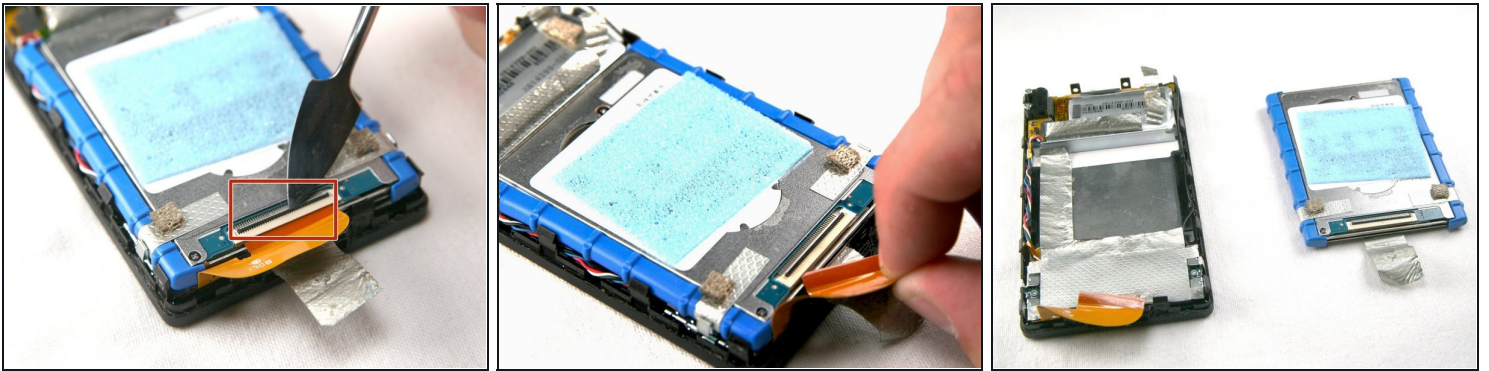
⚠ Be careful not to press the tools in too far; there are exposed cables right inside the edge of the device.

Step 4 — Remove the Silver Tape



- Remove the silver tape from the bottom center and the top right. This allows access to the hard drive and the battery.

Step 5



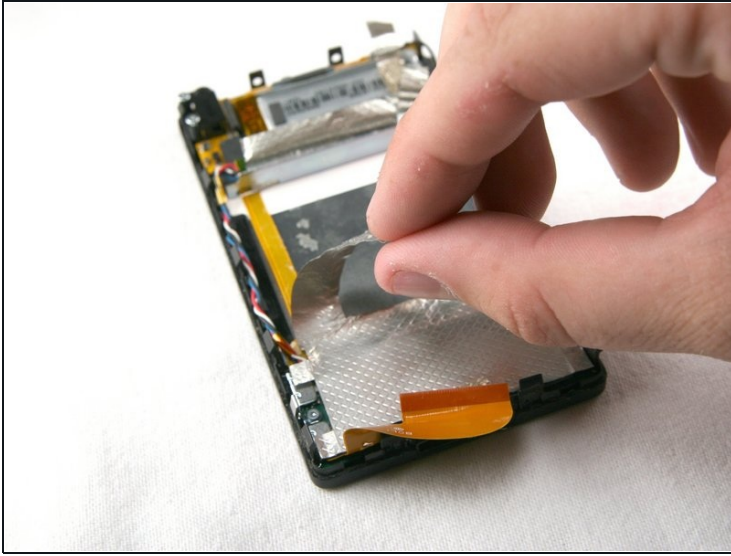
- Unclick the black bar connecting the orange hard drive cable to the bottom of the hard drive. Gently push towards the bottom of the device on the black bar until you hear a click sound, it is now disengaged from the hard drive.

⚠ If the cable doesn't come off easily, the black bar has not been un-clicked.

⚠ The hard drive cable (ZIF cable) is very fragile. Try to keep it in its original shape and bend it as little as possible.

- Now gently pull the orange hard drive cable to remove it from the hard drive.
- Lift the hard drive from the device.
- Hard Drive Replacement Only: Check to make sure the hard drive cable is in good condition and then connect the new hard drive in the same place, following the steps in reverse order.

Step 6 — Battery



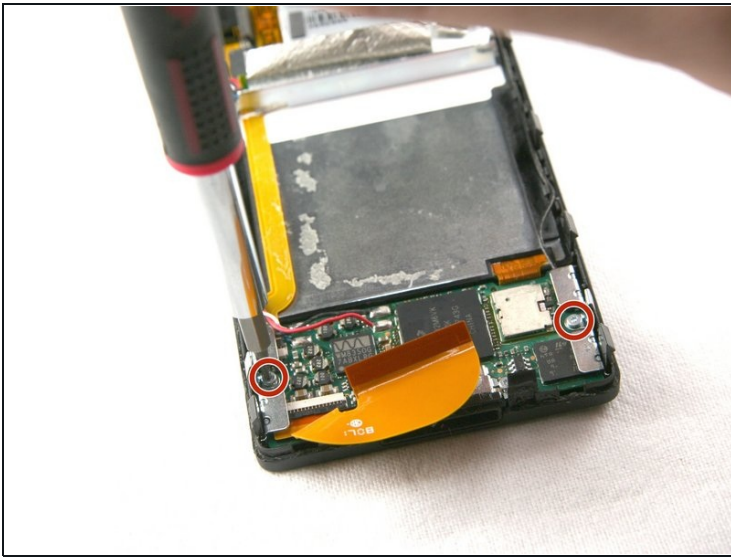
- Remove two more pieces of silver tape from the bottom of the device. One of these pieces is below the other.

Step 7



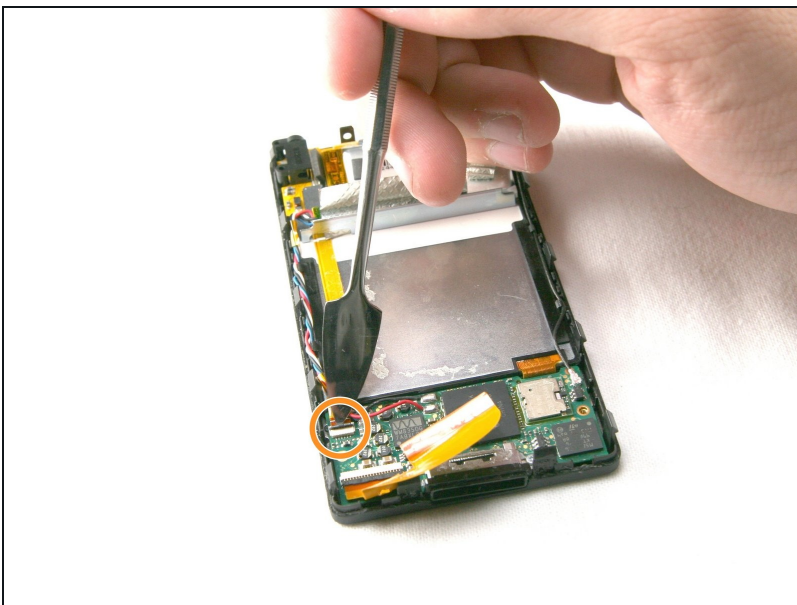
- Remove the two T4 screws holding the headphone jack receiver on the top left corner of the device.

Step 8



- Remove the two T4 screws holding the metal brackets on both sides of the bottom of the device.
- Remove the screws, brackets, and clips from the device. These are small pieces, so put them in a safe place.

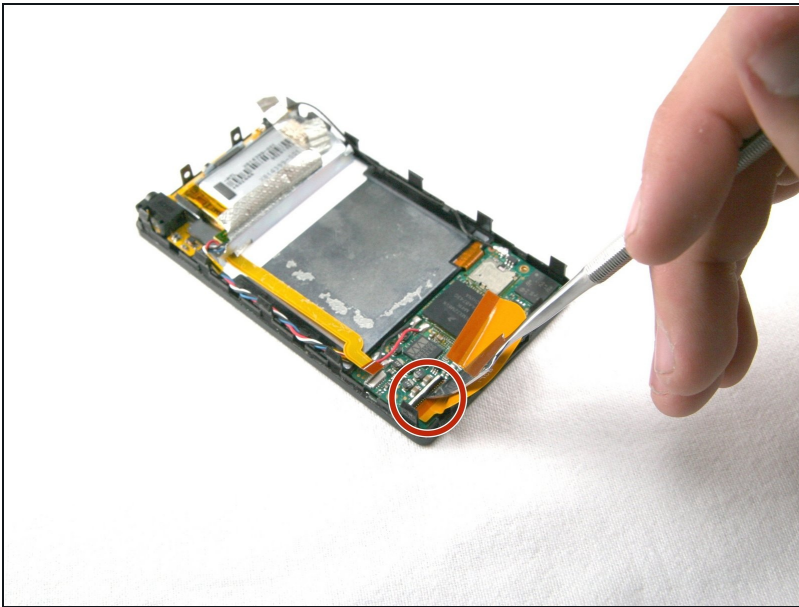
Step 9



- The orange audio board cable is clipped in with a small black bar, same as the hard drive cable. Unclip the bar by pushing upwards on the edge of the black bar towards the orange cable. You will hear it click when it disengages.

⚠ WARNING: If the cable doesn't come off easily, the black bar has not been un-clicked.

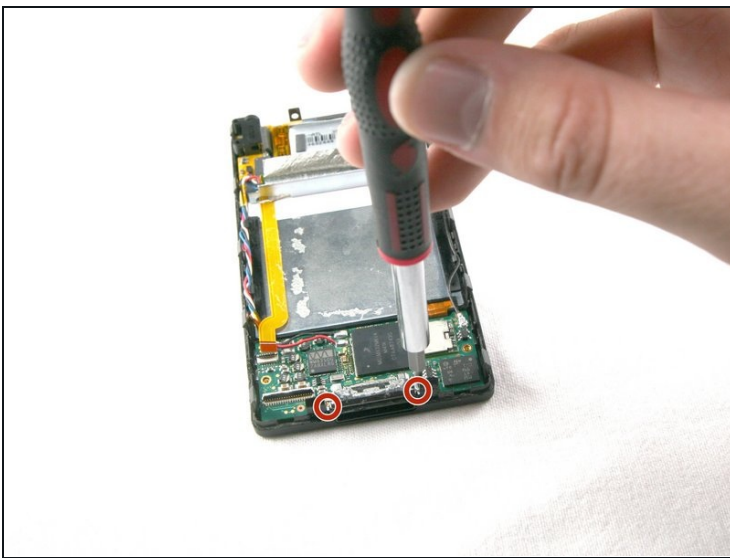
Step 10



- Flip the black bar to unclip the left side of the hard drive cable. You can now remove the hard drive cable.

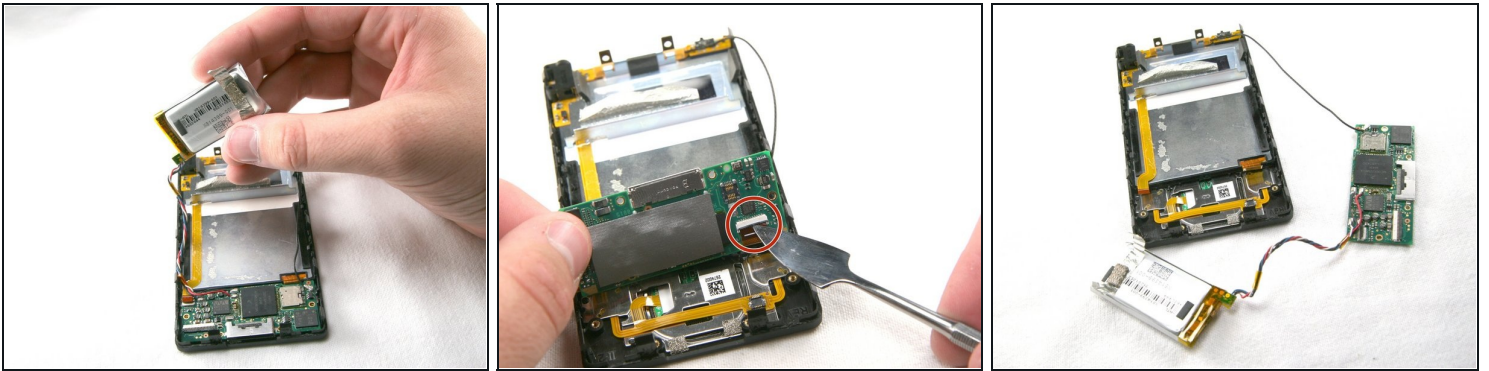
⚠ **WARNING:** If the cable doesn't come off easily, the black bar has not been un-clicked.

Step 11



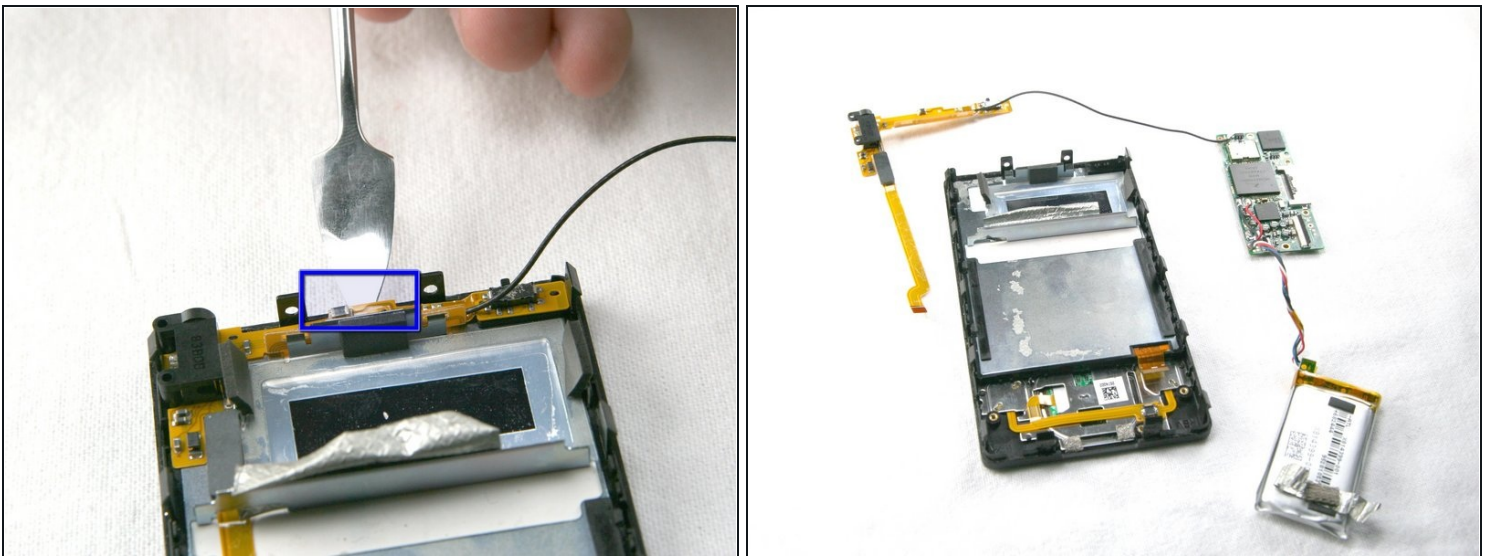
- Remove the two T4 screws that hold the charging port on the bottom of the device.
- Remove the charging port.

Step 12



- Remove the battery from the device with the cables still connected.
- Carefully lift up the mother board located at the base of the Zune. Unclip the orange ribbon cable in the same manner as in the previous steps.
- Remove the mother board from the Zune, leaving the black wire connected.

Step 13 — Screen

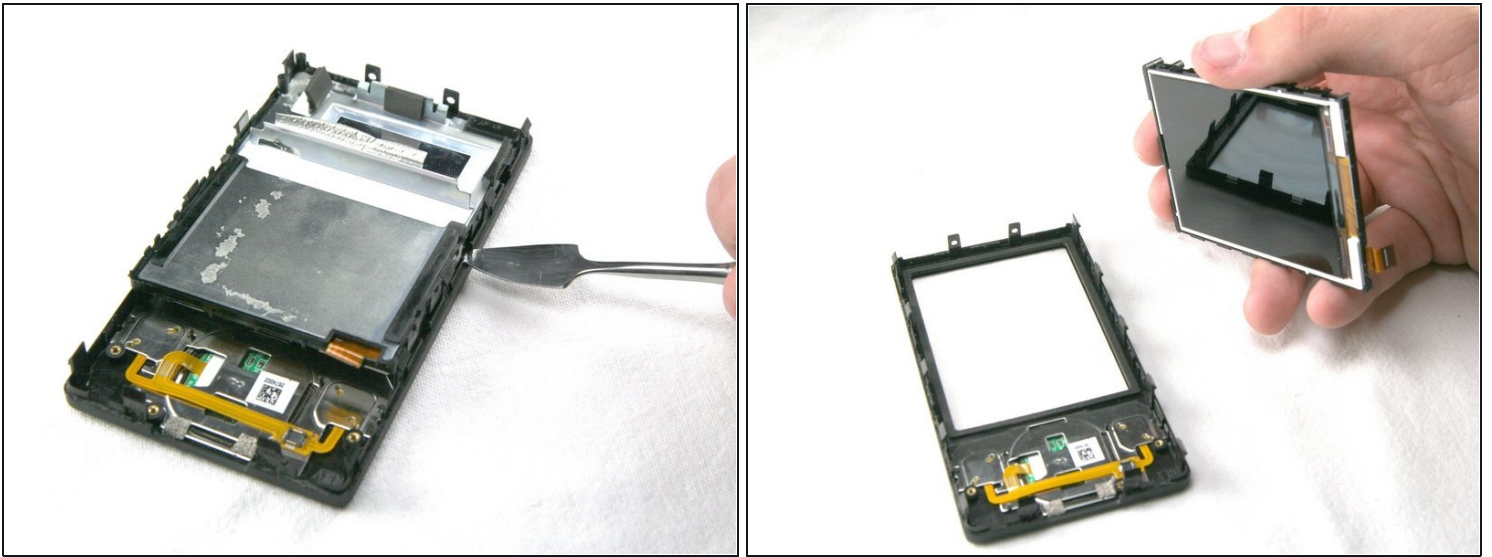


- Carefully remove the wireless assembly that runs along the top and upper left edges of the Zune.

⚠ The assembly is lightly glued to the device. Use caution, as some force will be needed, but too much force will damage the board.

- Remove the assembly and the battery together as a unit.

Step 14



- Gently pry the screen unit from the black, plastic front frame.
- Screen Replacement Only: After fixing the original screen or purchasing a new one, simply place the screen back into black frame and re-install the cables in the reverse order of this guide.

To reassemble your device, follow these instructions in reverse order.