



Logitech M185 Wireless Mouse Battery Replacement

How to replace the AA battery in the Logitech M185 Wireless Mouse

Written By: Garrett Ginter



 **TOOLS:**

- Fingers (1)

 **PARTS:**

- AA Battery (1)

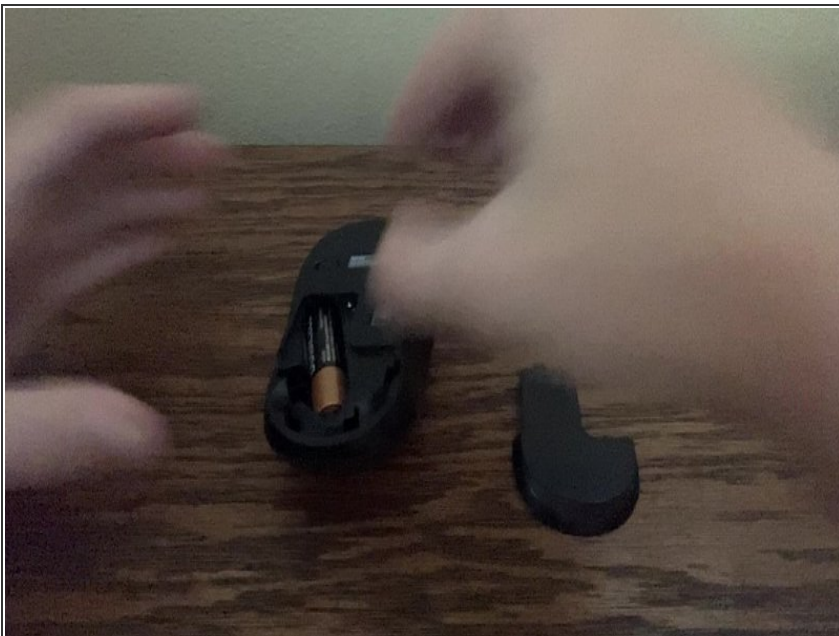
Step 1 — Remove back Cover



- Remove back cover by pressing down carefully on the creased part, then pull down.

⚠ Press down **Gently**

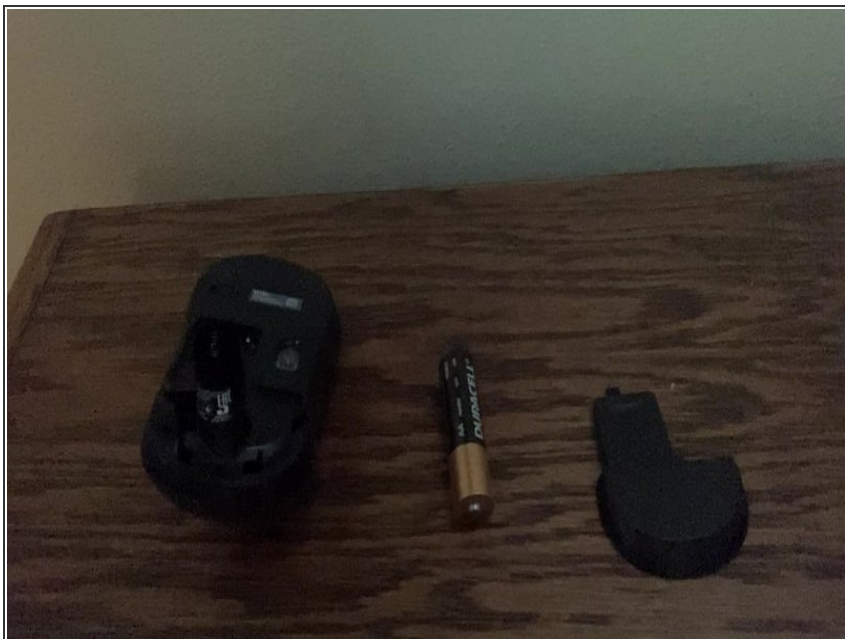
Step 2 — Remove AA Battery



- Press the bottom of the battery up.
- Then pull up gently and place on a flat, lint free surface.

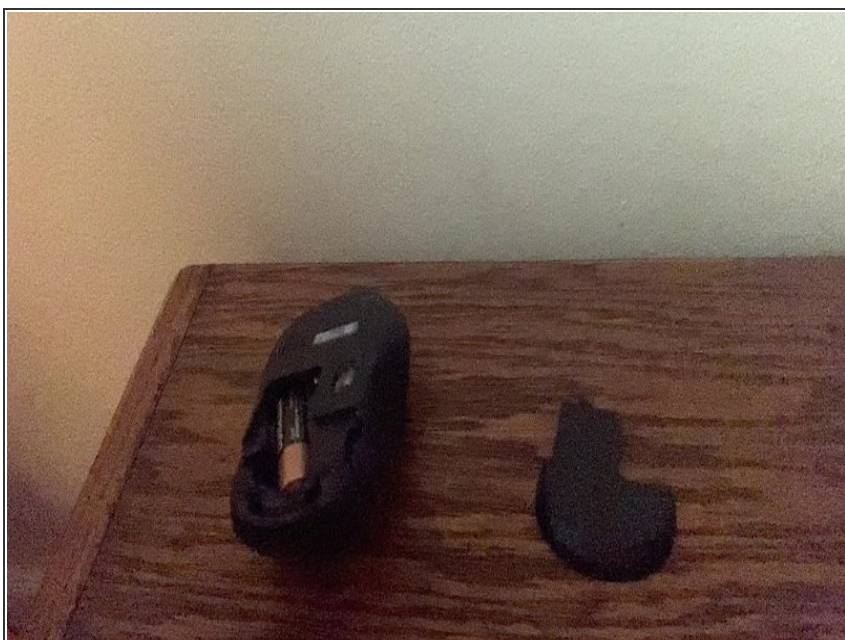
⚠ **Be very gentle as you can damage the battery, or internal components.**

Step 3 — Add new AA Battery



- Push AA Battery up once in AA battery holder.
- Push down on battery gently.

Step 4 — Close Up cover



- Align the cover in the battery holder, then push up.

To reassemble your device, follow these instructions in reverse order.