



# MacBook Pro 14" 2021 Speakers Replacement

Use this guide to replace one or both speakers...

Written By: Alex Diaz-Kokaisl



# INTRODUCTION

Use this guide to replace one or both speakers in your MacBook Pro 14" 2021.

**For your safety, discharge the battery below 25% before disassembling your MacBook.** This reduces the risk of fire if the battery is accidentally damaged during the repair. If your battery is swollen, [take appropriate precautions](#).

Some photos in this guide are from a different model and may contain slight visual discrepancies, but they won't affect the guide procedure.

---

## TOOLS:

[ESD Safe Blunt Nose Tweezers](#) (1)  
[4 mm Hex Driver](#) (1)  
[Suction Handle](#) (1)  
[iFixit Opening Picks \(Set of 6\)](#) (1)  
[P5 Pentalobe Screwdriver Retina MacBook Pro and Air](#) (1)  
[T5 Torx Screwdriver](#) (1)  
[Spudger](#) (1)  
[T6 Torx Screwdriver](#) (1)  
[T3 Torx Screwdriver](#) (1)  
[Isopropyl Alcohol \(90% or Greater\)](#) (1)

## PARTS:

[MacBook Pro 14" \(A2442, A2779\) Right Speaker](#) (1)  
[MacBook Pro 14" \(A2442, A2779\) Left Speaker](#) (1)  
[Stretch Release Battery Adhesive](#) (1)

---

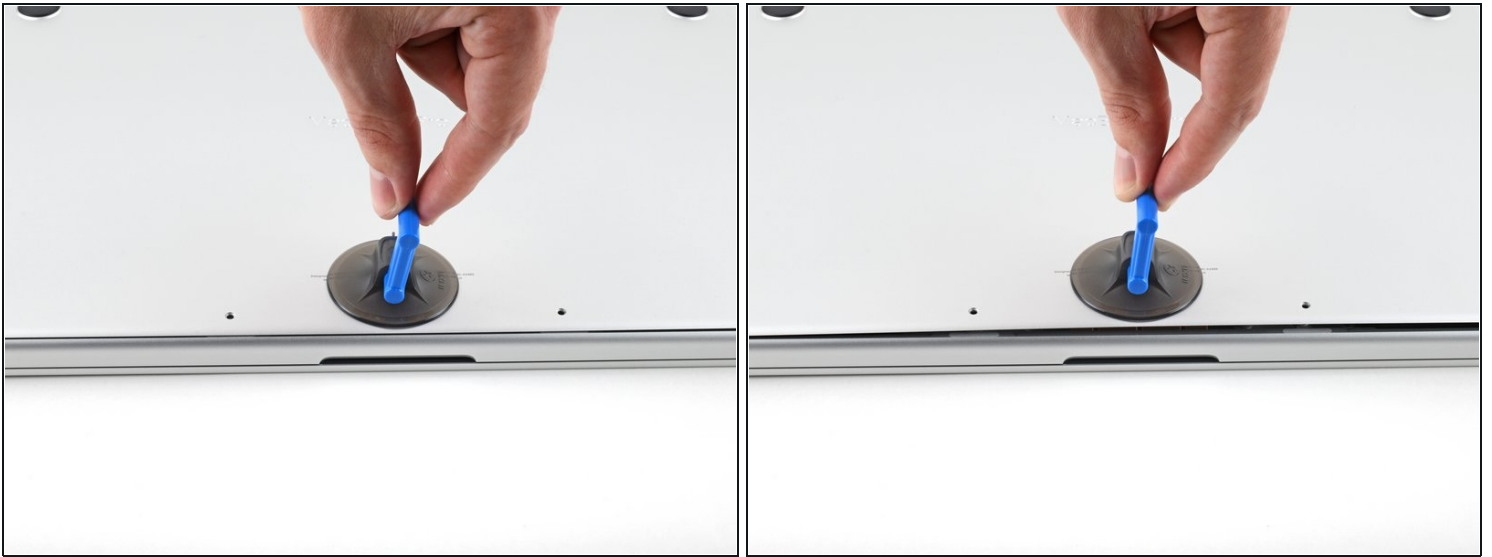
## Step 1 — Unfasten the lower case



⚠ Completely power off and unplug your MacBook Pro before you start. Close the screen and flip the entire laptop upside-down.

- Use a P5 Pentalobe driver to remove eight screws securing the lower case:
  - Four 9.3 mm screws
  - Four 5 mm screws
- ① Throughout this repair, [keep track of each screw](#) and make sure it goes back exactly where it came from to avoid damaging your device.

## Step 2 — Unclip the lower case



- Press a suction handle into place near the front edge of the lower case, between the screw holes.
- Pull up on the suction handle to create a small gap under the lower case.

## Step 3 — Release the right clips



- Insert an opening pick into the gap you just created.
- Slide the opening pick around the nearest corner and then halfway up the side of the MacBook Pro.
  - ❗ This releases the first of the hidden clips securing the lower case. You should feel and hear the clip pop free.

## Step 4 — Release the left clips



- Repeat the previous step on the other side, using an opening pick to release the second clip.

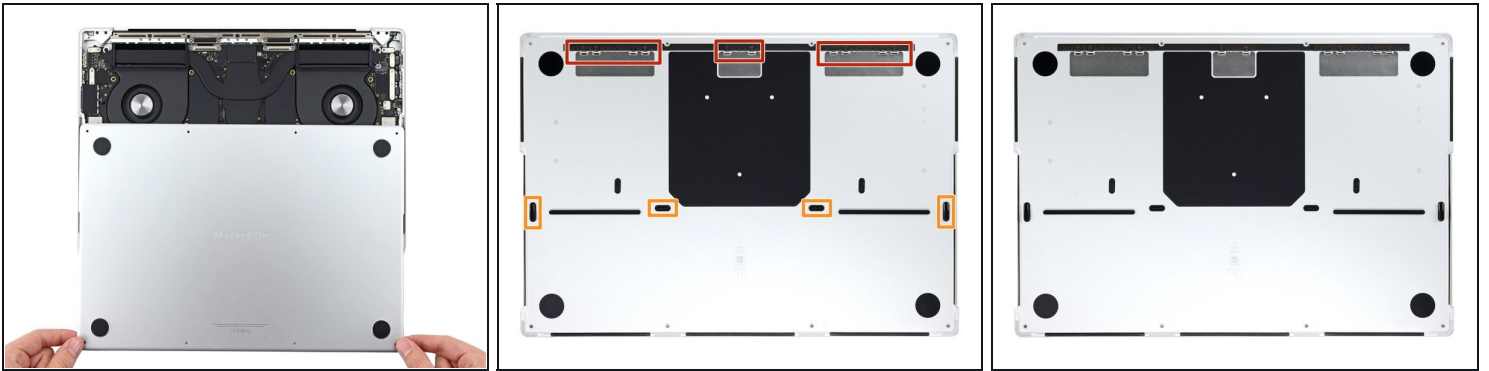
## Step 5 — Release the sliding clips



- ① [Sliding clips](#) along the back edge of the MacBook further secure the lower case. Separating these clips may require a lot of force—consider using gloves to protect your hands from the sharp edges of the lower case.
  - Firmly pull the lower case away from the back edge, one corner at a time, to disengage the sliding clips.
- ⚠ Keep the lower case flat to the MacBook. Don't pull upward until it's completely separated.



## Step 6 — Remove the lower case

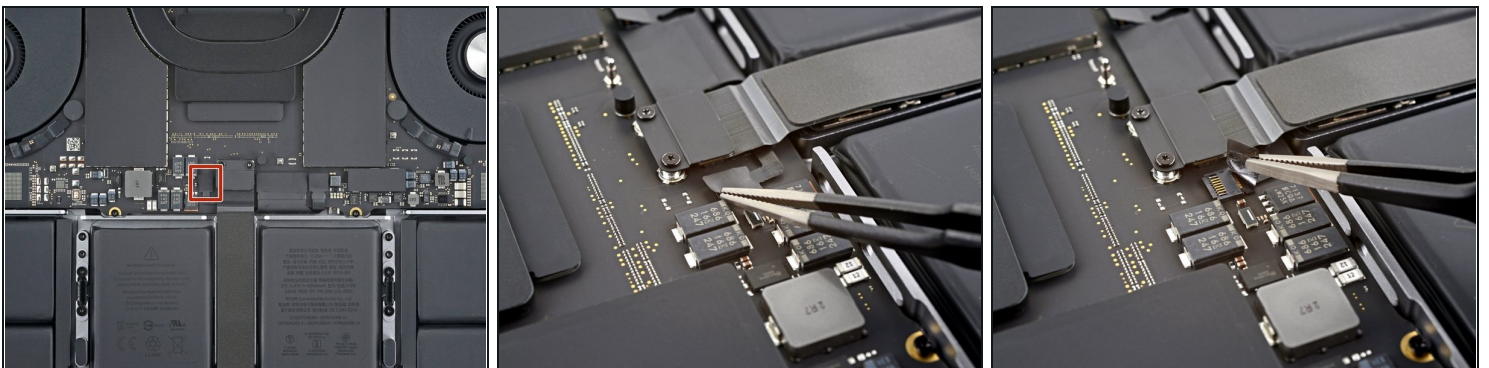


- Remove the lower case.

☑ To reinstall the lower case:

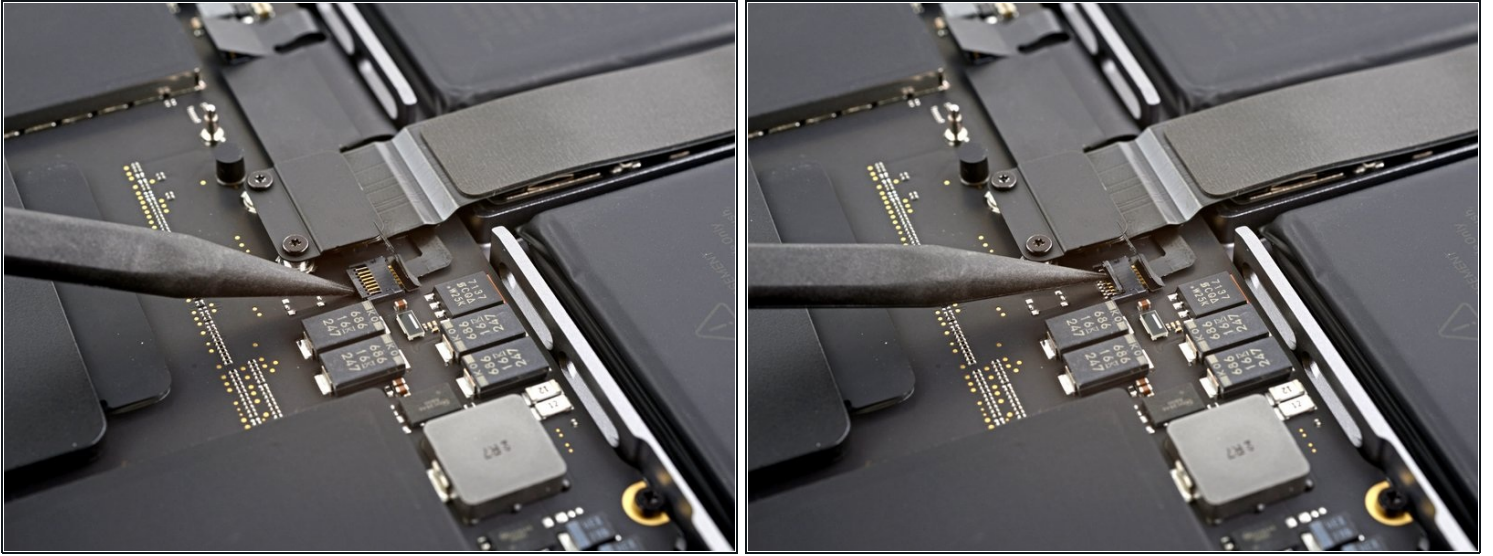
- Lay it down and align the sliding clips with the back edge of the MacBook. Press down on the lower case and slide it toward the back edge to engage the clips.
  - ⓘ When one side is engaged, it may push the other out of alignment. Check both sides as you push.
- Once the back corners of the lower case are secured and flush with the frame, press down along the middle of the lower case to engage the four remaining clips.
  - ⓘ You'll hear and feel each clip snap into place.

## Step 7 — Disconnect the battery board



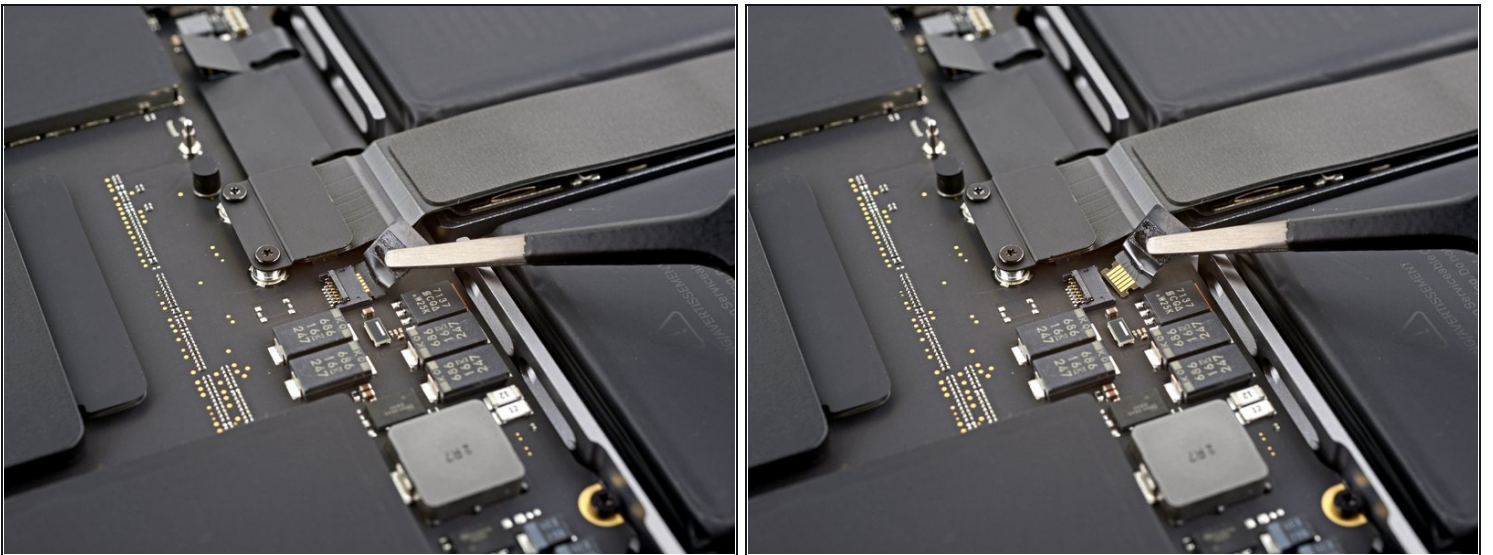
- Peel back any tape covering the battery board data cable connector on the logic board.

## Step 8



- Use a spudger to gently pry up the locking flap on the [ZIF connector](#) for the battery board data cable.

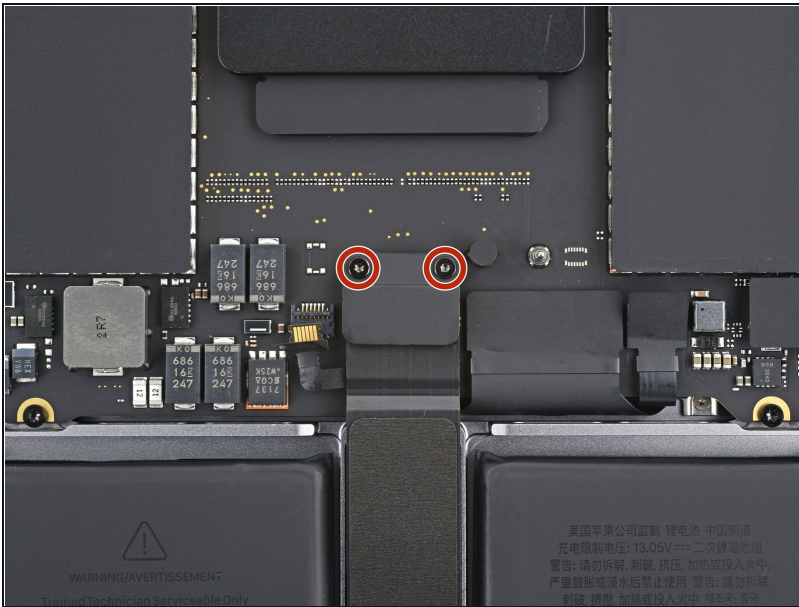
## Step 9



- Disconnect the battery board data cable by sliding it out from its socket on the logic board.



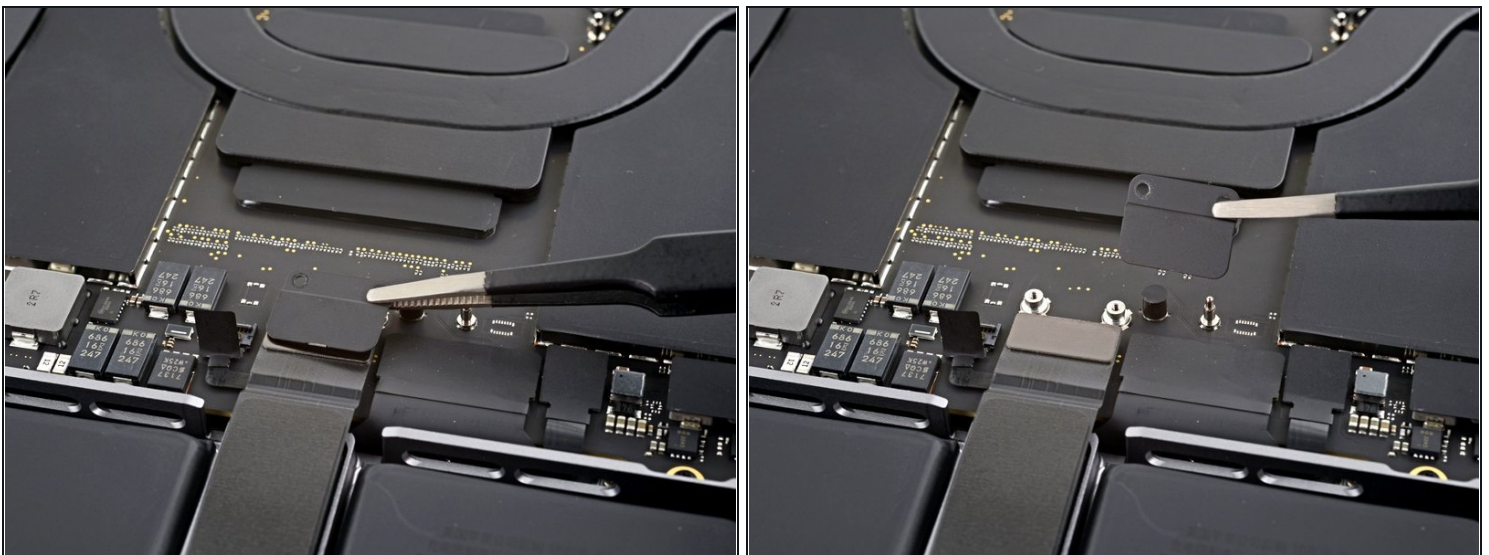
## Step 10 — Unfasten the trackpad cable bracket



**i** While your MacBook uses some Torx Plus screws, standard Torx bits work. Make sure to apply constant, downward force to avoid stripping.

- Use a T3 Torx driver to remove the two 2.1 mm-long 3IP Torx Plus screws securing the trackpad cable bracket to the logic board.

## Step 11 — Remove the trackpad cable bracket



- Use tweezers, or your fingers, to remove the trackpad cable bracket.

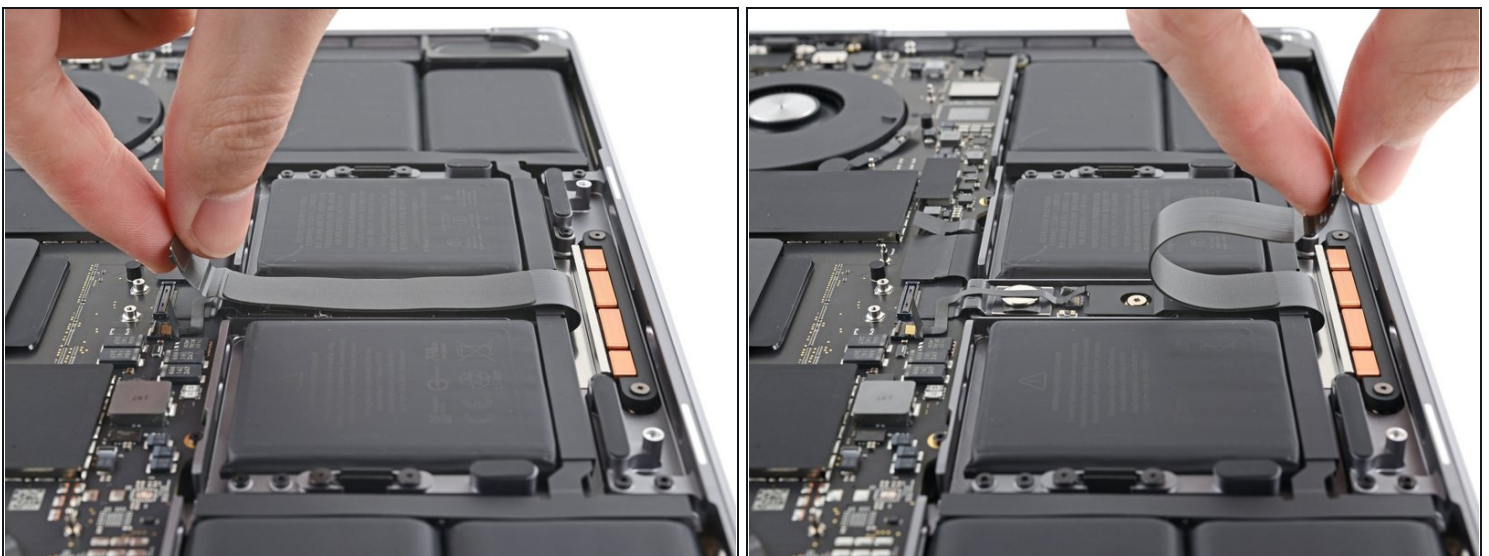


## Step 12 — Disconnect the trackpad cable



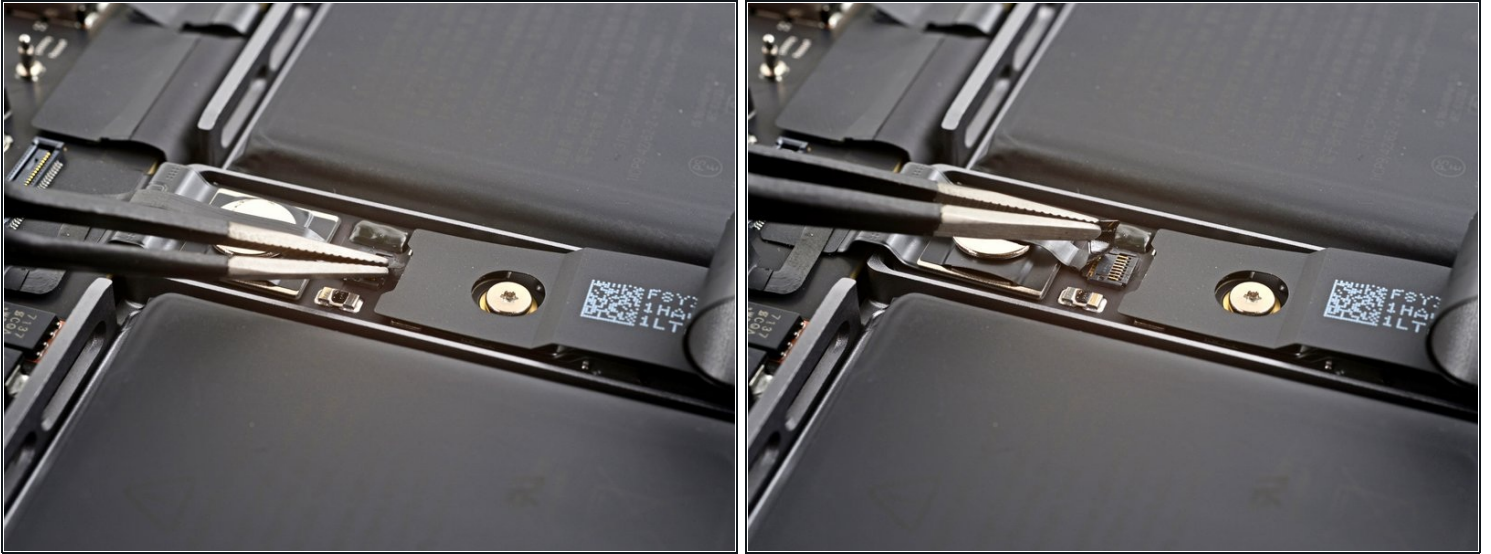
- Use the flat end of a spudger to pry up and disconnect the trackpad cable's press connector secured to the logic board.
- ⓘ To re-attach [press connectors](#) like this one, carefully align and press down on one side until it clicks into place, then repeat on the other side. Don't press down on the middle. If the connector is misaligned, the pins can bend, causing permanent damage.

## Step 13 — Reposition the trackpad cable



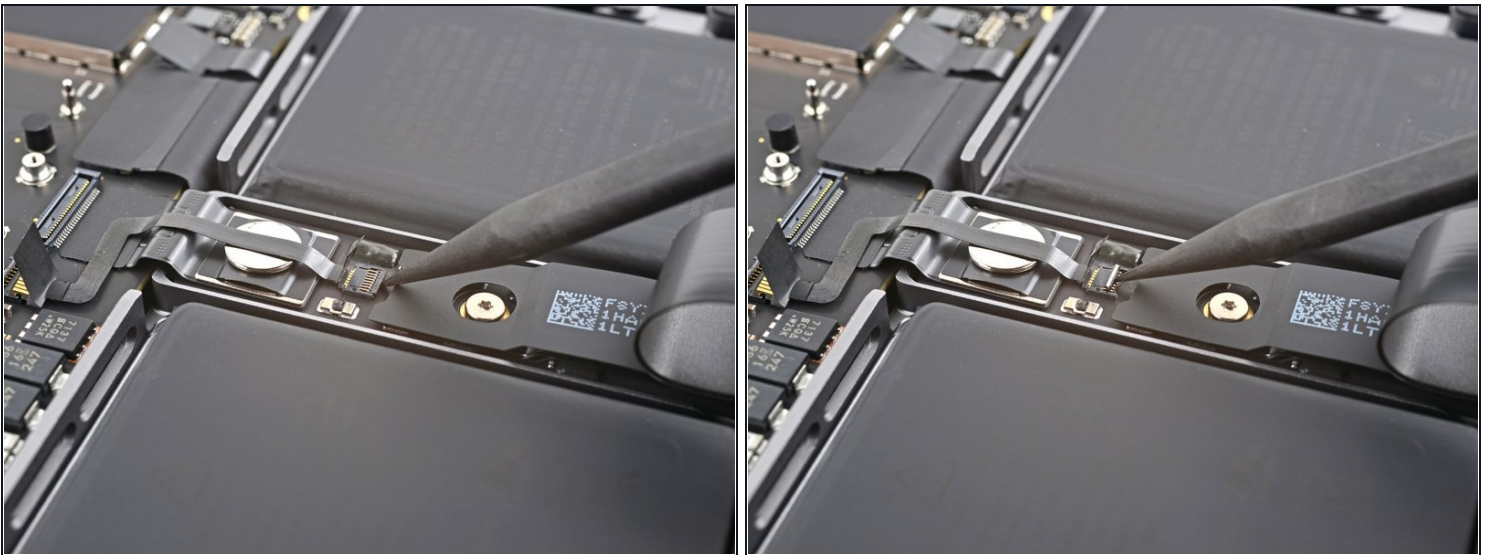
- ⓘ The trackpad cable is lightly adhered to the frame.
- Peel the trackpad cable away from the device, making sure to separate the adhesive.

## Step 14 — Disconnect the battery board



- Peel back any tape covering the battery board data cable connector under the large pancake screw.

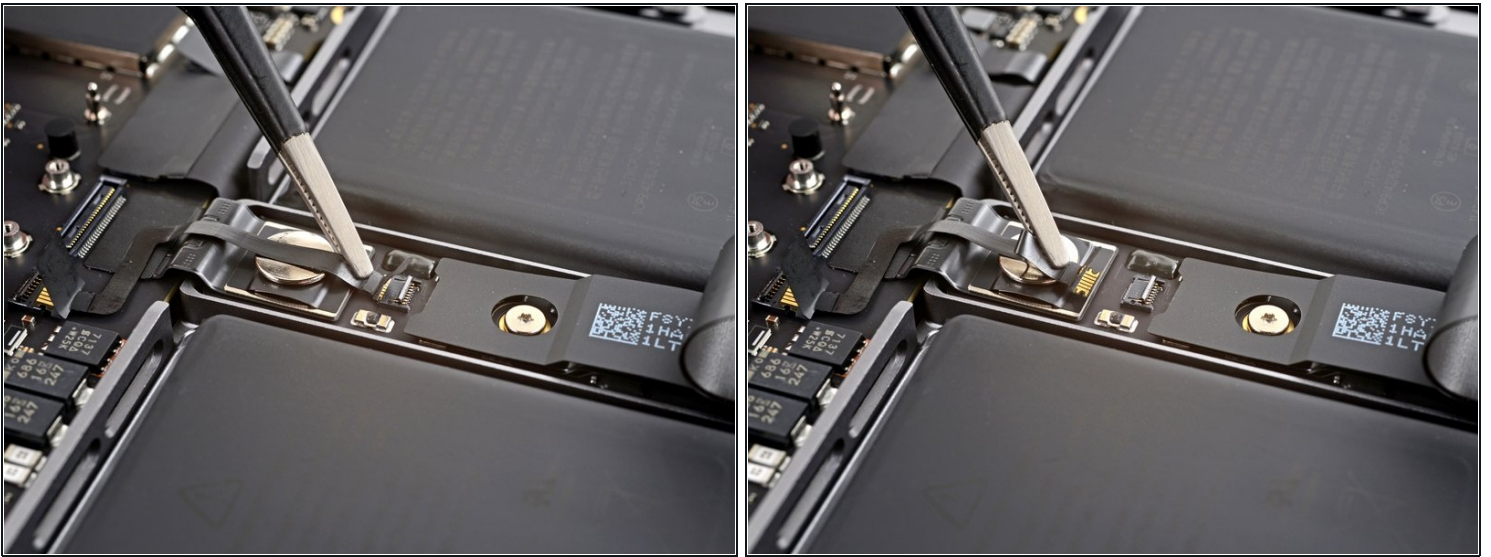
## Step 15



- Use a spudger to gently pry up the locking flap on the ZIF connector for the battery board data cable.



## Step 16



- Disconnect the battery board data cable by sliding it out from its socket on the battery board.

## Step 17 — Remove the data cable



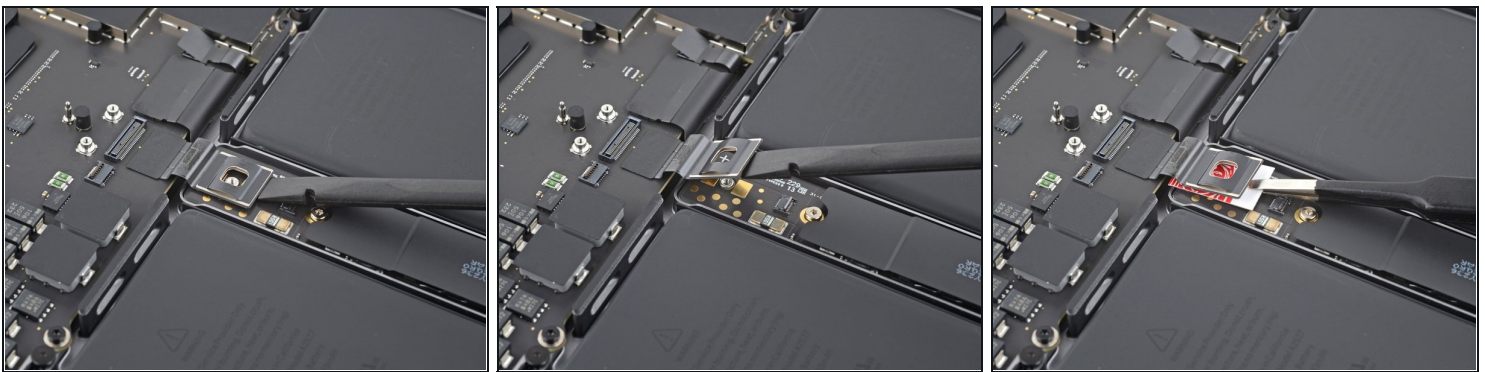
- ① The battery board data cable is lightly adhered to the device.
- Slide blunt nose tweezers under areas with adhesive to separate the cable from the device.
- Remove the battery board data cable.

## Step 18 — Unfasten the battery connector



- Use a T5 Torx driver to remove the 3.8 mm 5IP Torx Plus wide-head screw securing the battery power connector.

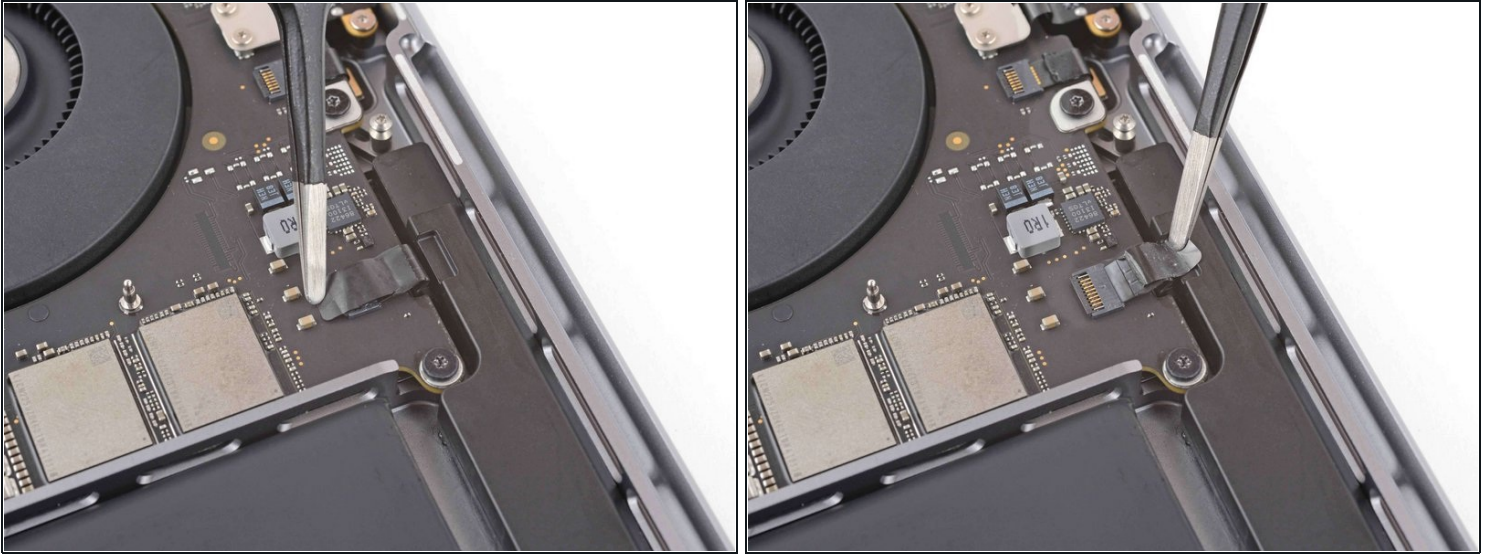
## Step 19 — Disconnect the battery connector



- Use the flat end of your spudger to lift the battery connector away from the battery board, disconnecting the battery.
- ⚠ Lift the connector high enough that it doesn't accidentally make contact during the repair, but no more than 45 degrees to prevent damaging its hinge.
- ⓘ For added safety, place a barrier, such as a piece of a playing card, between the connector and board.

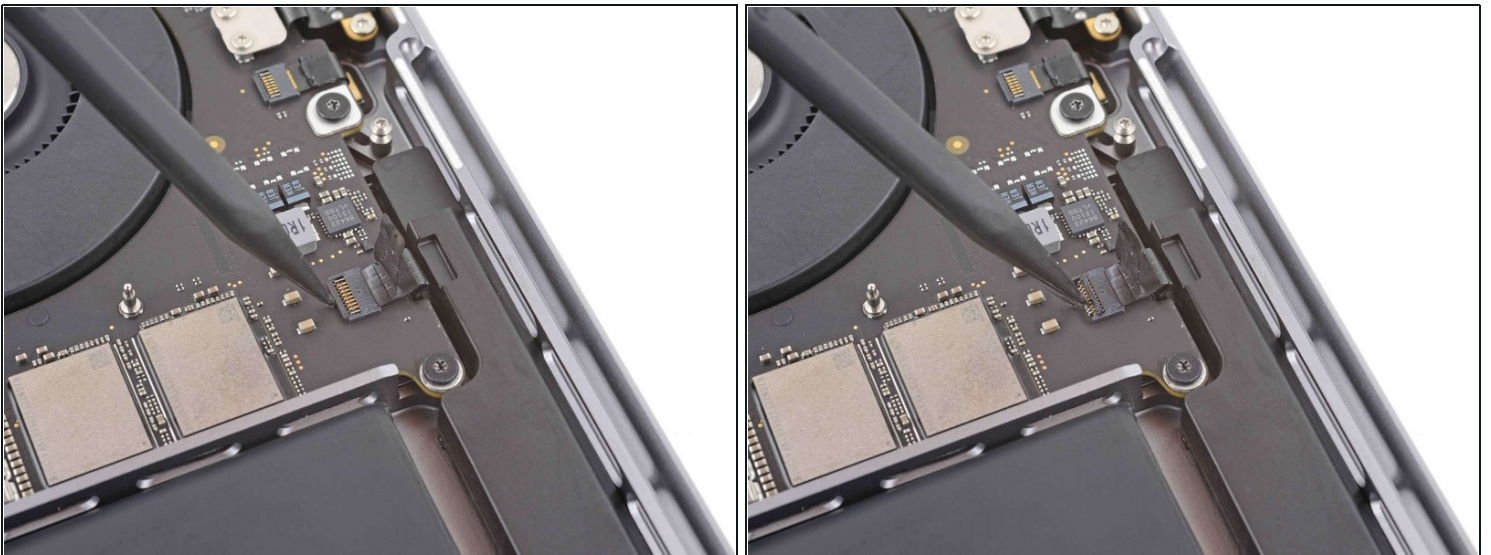


## Step 20 — Disconnect the right speaker



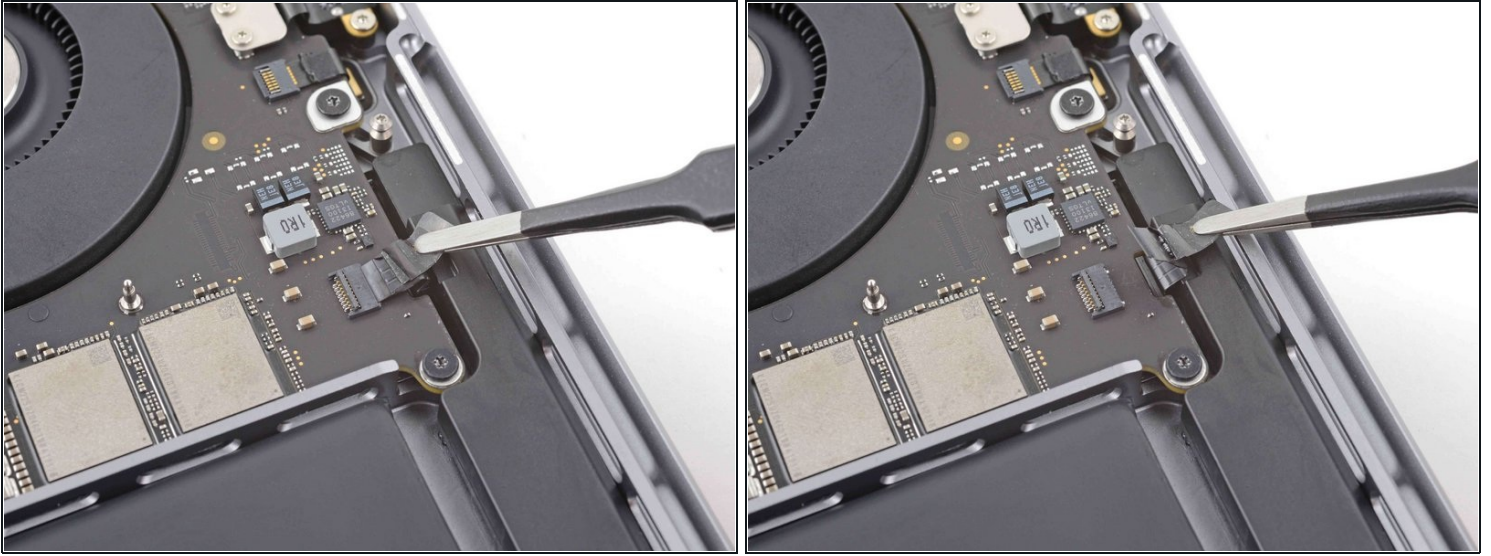
- Peel back the tape covering the right speaker ZIF connector.

## Step 21



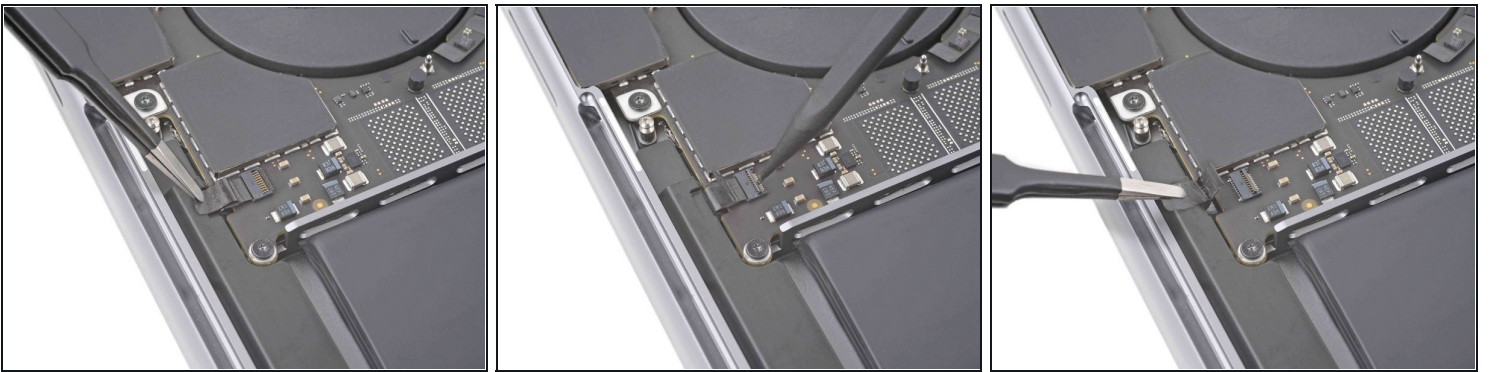
- Use the pointed end of a spudger to gently pry up the locking flap on the right speaker ZIF connector.

## Step 22



- Disconnect the right speaker cable by sliding it out from its socket.

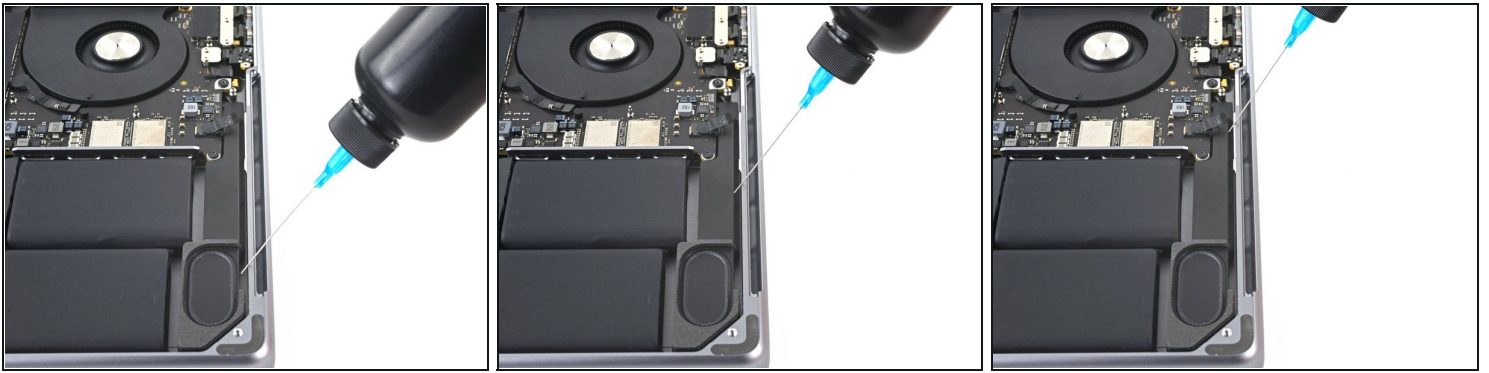
## Step 23 — Disconnect the left speaker



- Follow the procedure in the previous three steps to disconnect the left speaker.

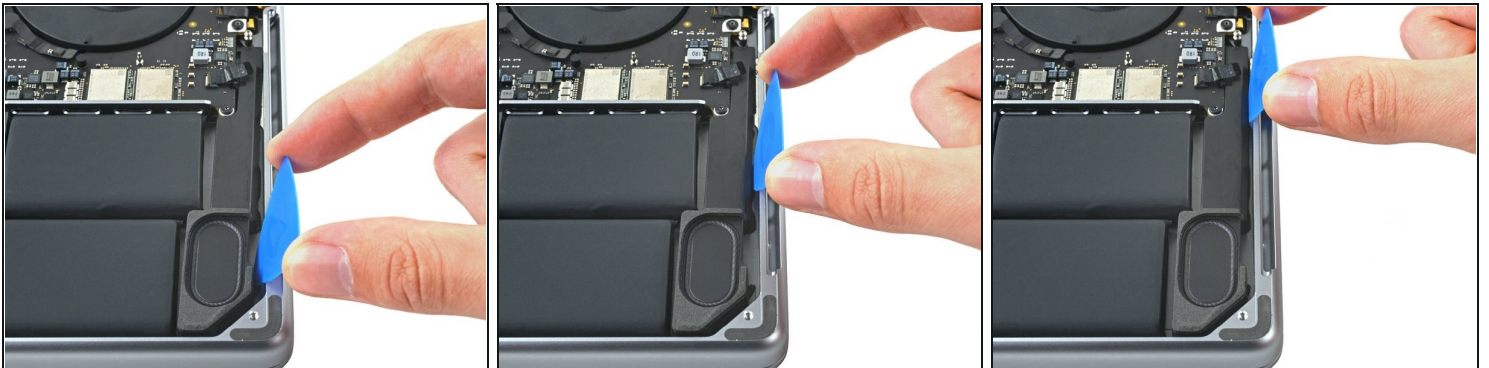


## Step 24 — Apply isopropyl alcohol



- Apply a few drops of highly-concentrated isopropyl alcohol (>90%) in the gap between the speaker and the edge of the frame.
- Wait for 1–2 minutes to allow time for the isopropyl alcohol to weaken the adhesive.

## Step 25 — Separate the adhesive



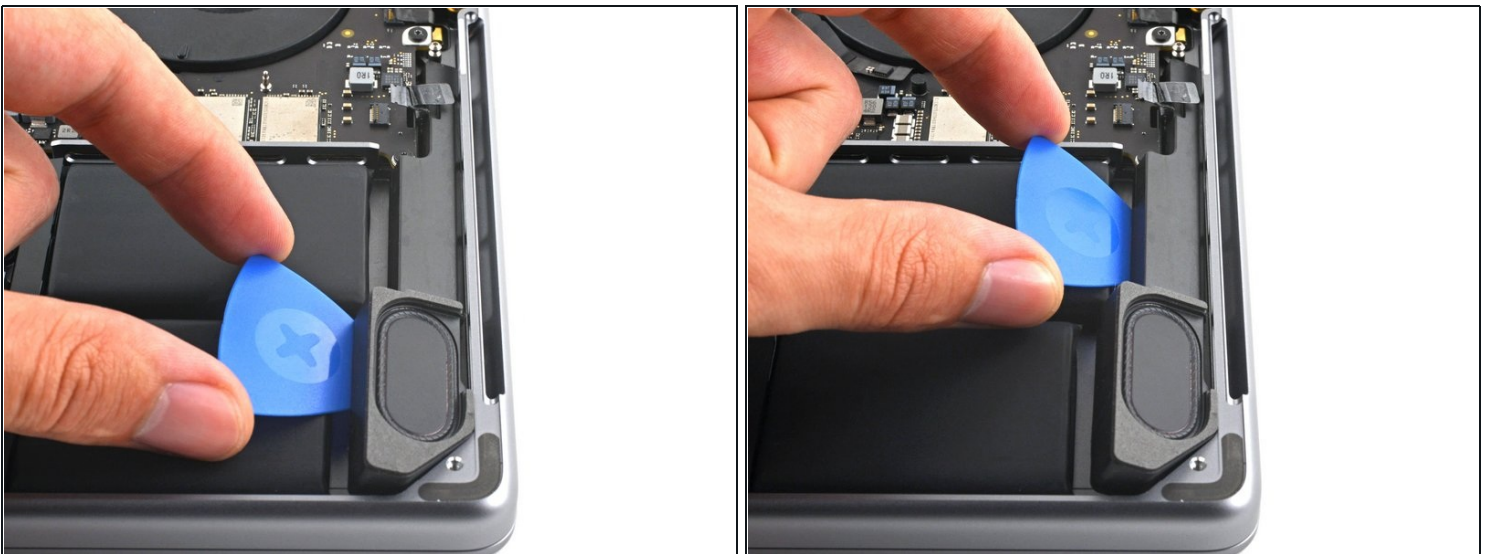
- Insert the tip of an opening pick in the gap between the speaker and the edge of the frame.
- Slide the opening pick along the edge of the speaker to slice the adhesive beneath it.

## Step 26



- Insert the tip of an opening pick in the gap between the battery and the speaker.
- Pry up with the pick to separate the speaker from the frame.  
**⚠ Take care not to puncture the battery while you pry. If you're having difficulty prying up, apply a few more drops of isopropyl alcohol.**

## Step 27



- Slide the pick along the edge of the speaker to separate the adhesive.



## Step 28 — Remove the speaker



- Use your fingers to remove the speaker, making sure to peel off any remaining adhesive.
  - Repeat the loosening and separating process for the other speaker.
  - ☒ Use a pre-cut adhesive sheet, like [Tesa Tape](#), to [secure the speaker back to the frame](#).
  - Clean up any remaining adhesive from the frame before installing new adhesives.
- 

**To reassemble your device, follow these instructions in reverse order.**

Compare your new replacement part to the original part—you may need to transfer remaining components or remove adhesive backings from the new part before you install it.

Repair didn't go as planned? Try some [basic troubleshooting](#), or ask our [MacBook Pro 14" 2021 Answers community](#) for help.