



Samsung Galaxy S4 Speaker Enclosure Replacement

Replace the speaker assembly in your Samsung Galaxy S4.

Written By: Andrew Optimus Goldheart



INTRODUCTION

Use this guide to replace the speaker enclosure in your Galaxy S4. The speaker enclosure is attached to the midframe and includes both the speakerphone speaker and two antennas.



TOOLS:

- [iFixit Opening Tools](#) (1)
- [Phillips #00 Screwdriver](#) (1)



PARTS:

- [Galaxy S4 Speaker Assembly \(Sprint/Verizon\)](#) (1)
- [Galaxy S4 Speaker Assembly \(ATT\)](#) (1)
- [Galaxy S4 Speaker Assembly \(Sprint Triband\)](#) (1)
- [Galaxy S4 Speaker Assembly \(International\)](#) (1)

Step 1 — Rear Case



- Pry with a plastic opening tool, or your fingernail, in the divot to the left of the rear-facing camera, near the power button.

Step 2



- Lift the rear case by the corner nearest the divot and remove it from the phone.

Step 3 — MicroSD Card



- Use the flat end of a spudger, or your fingernail, to press the microSD card slightly deeper into its slot until you hear a click.
 - After the click, release the card and it will pop out of its slot.
 - Remove the microSD card.
- ✦ For reassembly, push the microSD card into the slot until it clicks in place.

Step 4 — Battery



- Insert a plastic opening tool, or your finger, into the notch of the battery compartment and lift the battery upward.
- Remove the battery from your phone.

Step 5 — SIM Card



- Use a plastic opening tool, or your fingernail, to press the SIM card slightly deeper into its slot until you hear a click.
 - After the click, release the card and it will pop out of its slot.
 - Remove the SIM card.
- ✦ During reassembly, push the SIM card into the slot until it clicks in place.



Step 6 — Midframe



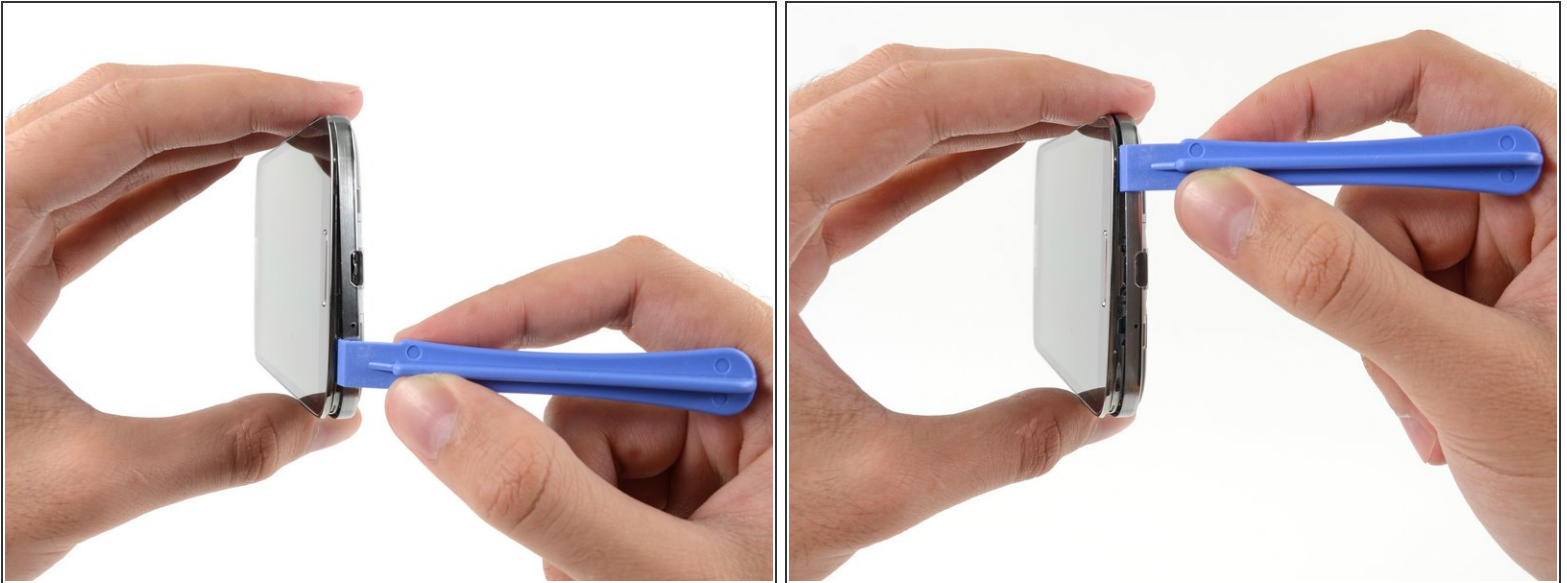
- Remove the nine 4.0 mm Phillips #00 screws securing the midframe to the display assembly.

Step 7



-  The midframe is secured to the display assembly by several plastic clips behind the chrome bezel of the midframe. The next few steps will guide you through separating the clips to free the midframe.
- Starting on the volume button side of the phone, insert your plastic opening tool between the chrome bezel around the display glass and the larger chrome border piece. Look for the seam between the two.
 - Slide the opening tool along the seam, separating the plastic clips as you go.
-  Be very gentle whilst prying, and pry only enough to separate the plastic clips—there are several thin points in the midframe bezel that may crack if you bend them too much.

Step 8



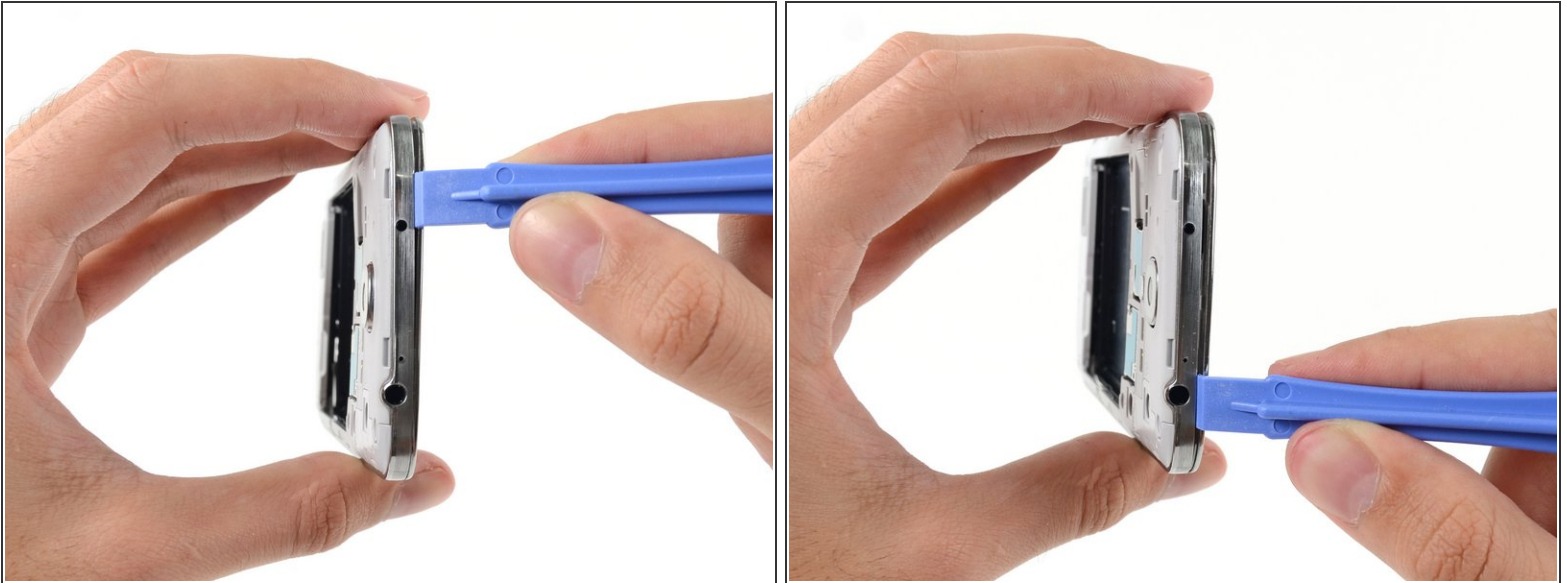
- Continue prying around the corner of the phone.
- Slide your opening tool along the seam between the midframe and display along the bottom of the device, releasing more of the plastic clips.

Step 9



- Again, pry around the corner, to the power button side.
- Slide the opening tool along the seam.

Step 10



- Continue sliding the opening tool around the top of the phone, releasing the last of the clips and freeing the midframe from the display assembly.
- ⓘ At this point, you may want to run your plastic opening tool along the entire perimeter of the device again, to make sure you've released all of the plastic clips.

Step 11



- Remove the midframe from the display assembly.

Step 12 — Speaker Enclosure



- Hold the midframe in one hand and the speaker enclosure in the other.
- Gently twist the speaker enclosure away from the midframe to pop it free from the clips securing it to the midframe.
- Remove the speaker enclosure from the midframe.

To reassemble your device, follow these instructions in reverse order.