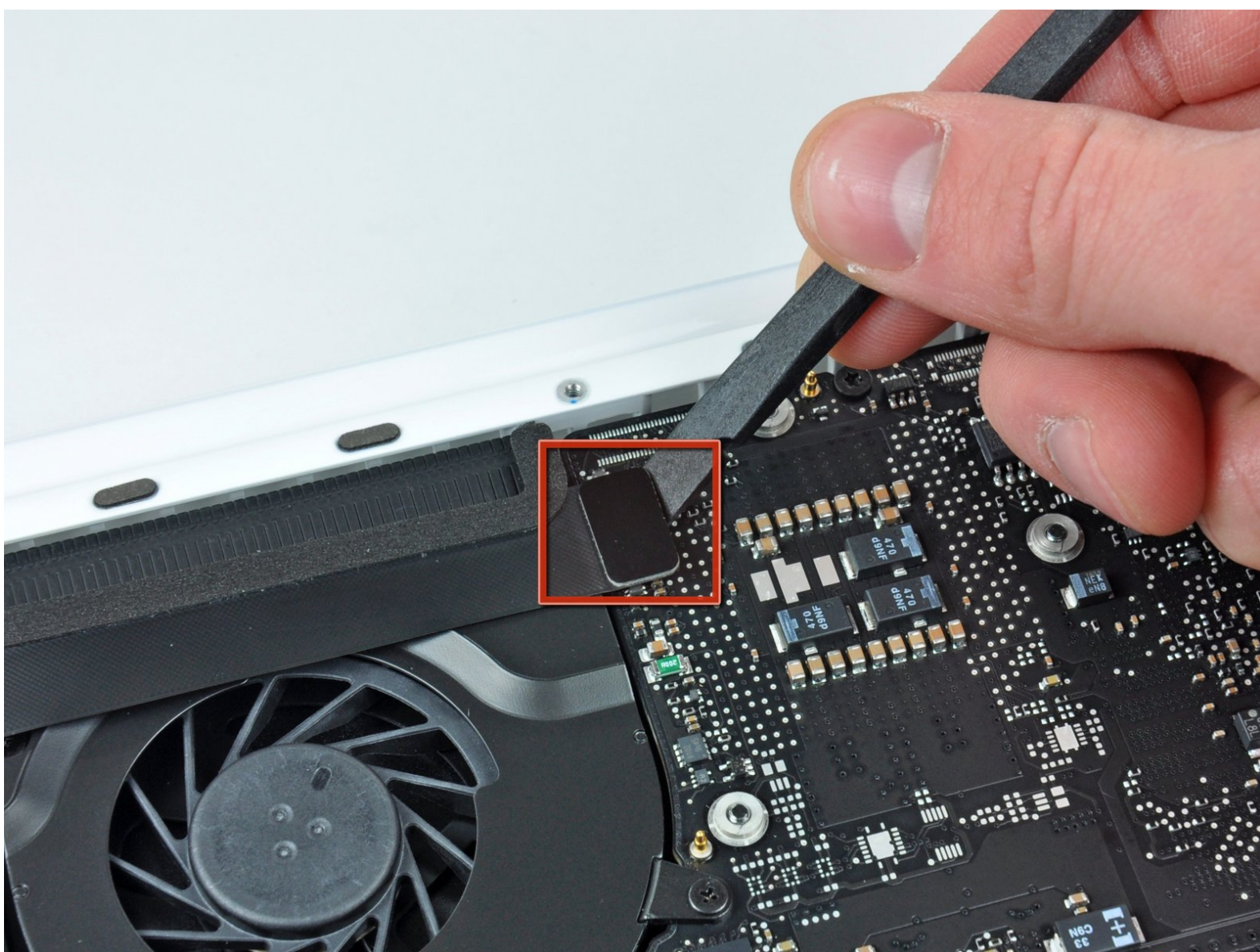




MacBook Unibody Model A1342

AirPort/Bluetooth Cable Replacement

Written By: Walter Galan



INTRODUCTION

Faulty Wi-Fi or Bluetooth connection? Replace the AirPort/Bluetooth cable.



TOOLS:

- [Phillips #00 Screwdriver](#) (1)
- [Spudger](#) (1)



PARTS:

- [MacBook Unibody \(Model No. A1342\)](#)
[AirPort/Bluetooth Cable](#) (1)


Step 1 — Lower Case



- Remove the eight 4 mm Phillips screws securing the lower case to the MacBook.

Step 2



 The lower case is constructed of rubber-coated aluminum. Do not excessively bend the aluminum during removal, as any permanent deformation will cause tolerance issues after reassembly.

- Slightly lift the lower case near the vent opening.
- Continue running your fingers between the lower and upper cases until the upper case pops off its retaining clips.

 The location of these three clips is shown in the third picture.

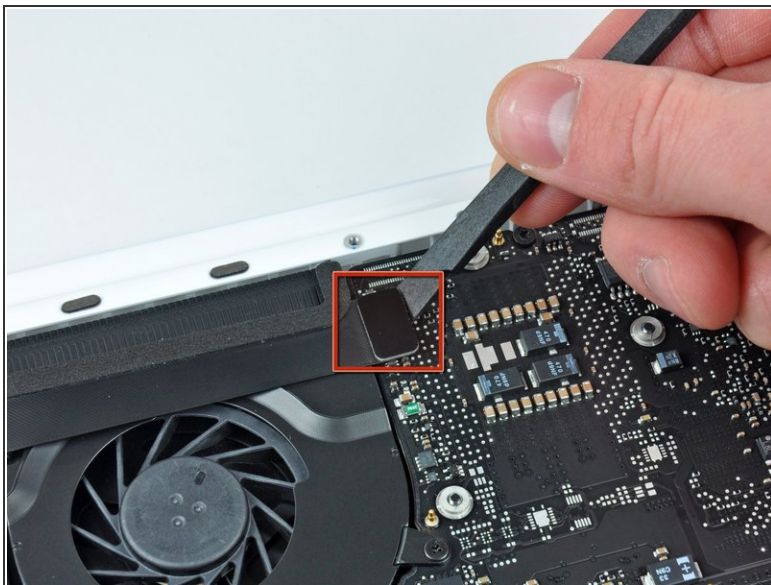
Step 3 — Battery



⚠ For precautionary purposes, we advise that you disconnect the battery connector from the logic board to avoid any electrical discharge. This step is **optional** and is not required.

- Use the flat end of a spudger to lift the battery connector up out of its socket on the logic board.
- ⓘ It may be easier to use your fingernails to lift up on both sides of the connector.

Step 4 — AirPort/Bluetooth Cable



- Use the flat end of a spudger to pry the AirPort/Bluetooth cable connector off the logic board.
- Carefully peel the AirPort/Bluetooth ribbon cable from its channel within the rear speaker assembly.

Step 5



- Use the flat end of a spudger to pry the AirPort/Bluetooth cable connector up off the right speaker.

To reassemble your device, follow these instructions in reverse order.