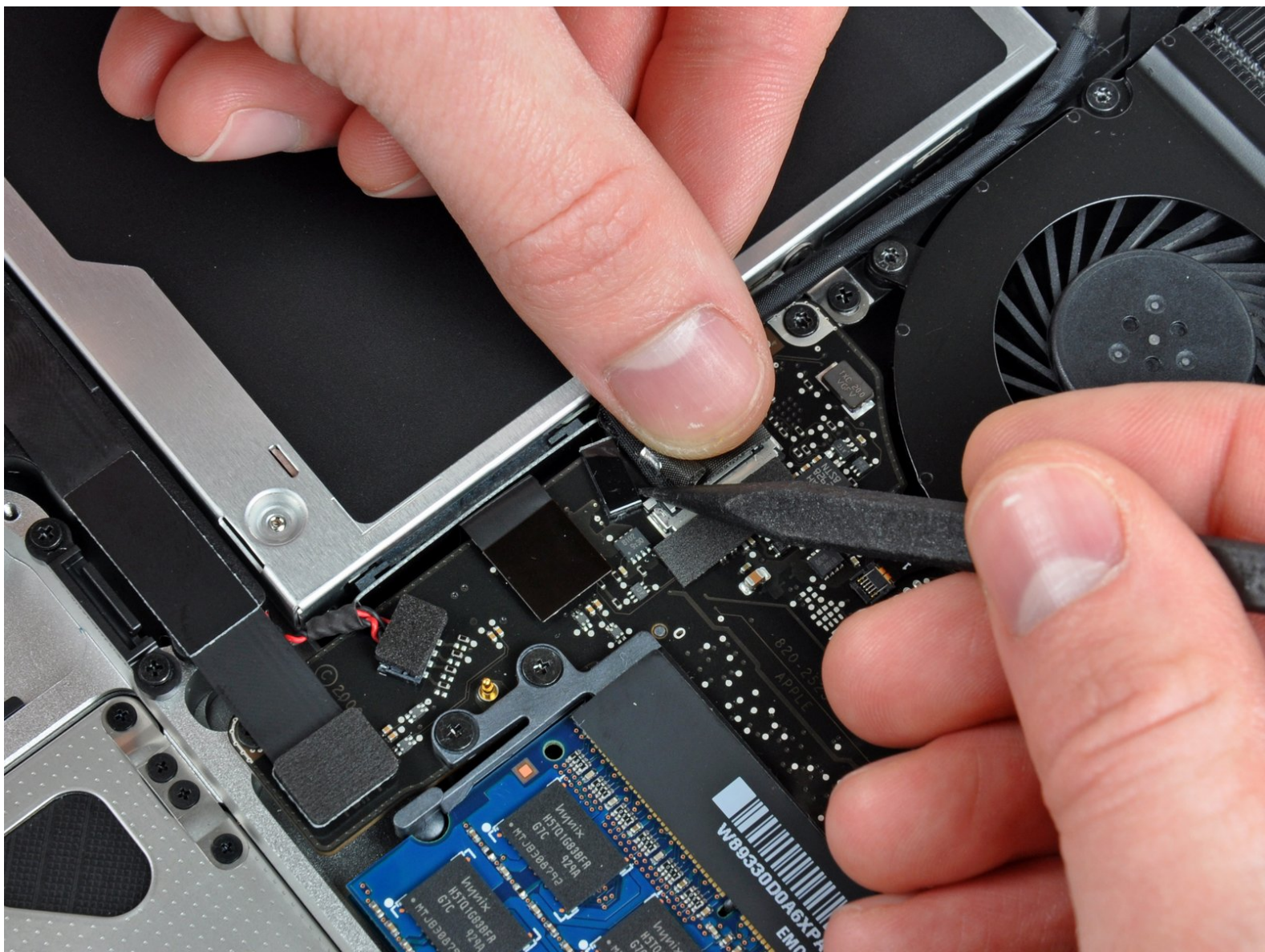




# MacBook Pro 15" Unibody Mid 2009 Optical Drive Replacement

Written By: Andrew Bookholt



---

# INTRODUCTION

This guide is an internal prerequisite and should remain unpublished.

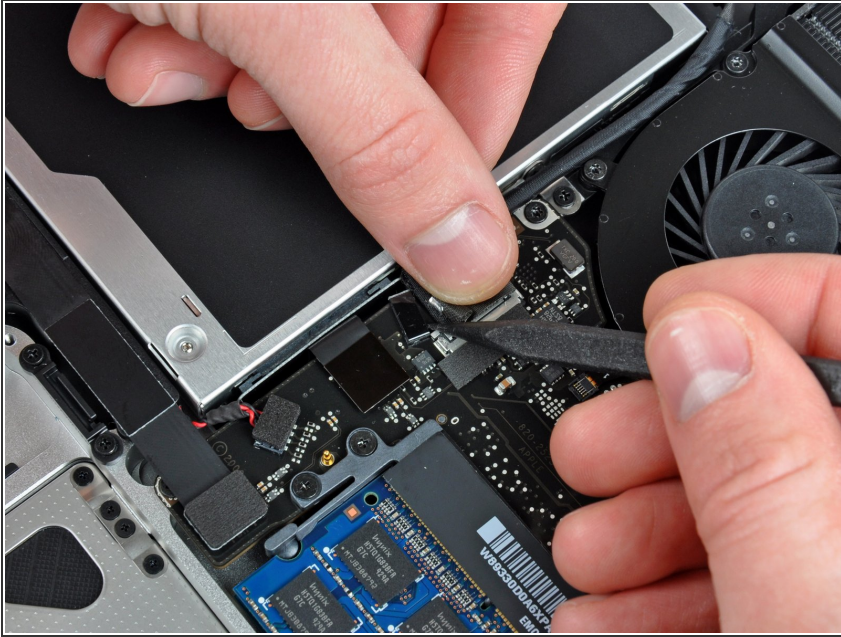
---



## TOOLS:

- [Phillips #00 Screwdriver](#) (1)
  - [Spudger](#) (1)
-

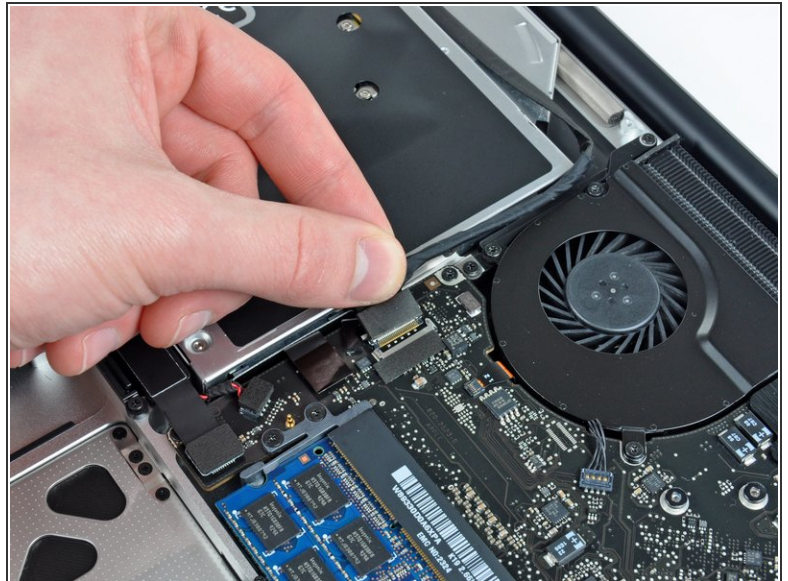
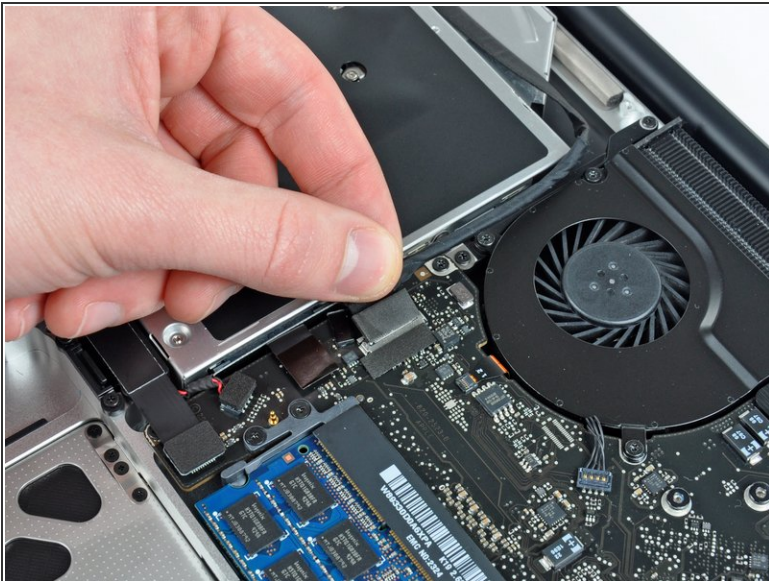
## Step 1 — Optical Drive



**⚠** Apple sticks a small strip of clear plastic with adhesive applied to one side to the logic board behind the camera cable connector to keep it in its socket. When moving it out of the way, be sure not to break any surface-mount components off the logic board.

- Hold the end of the cable retainer down with one finger while you use the tip of a spudger to slightly lift the other end and rotate it away from the camera cable connector.

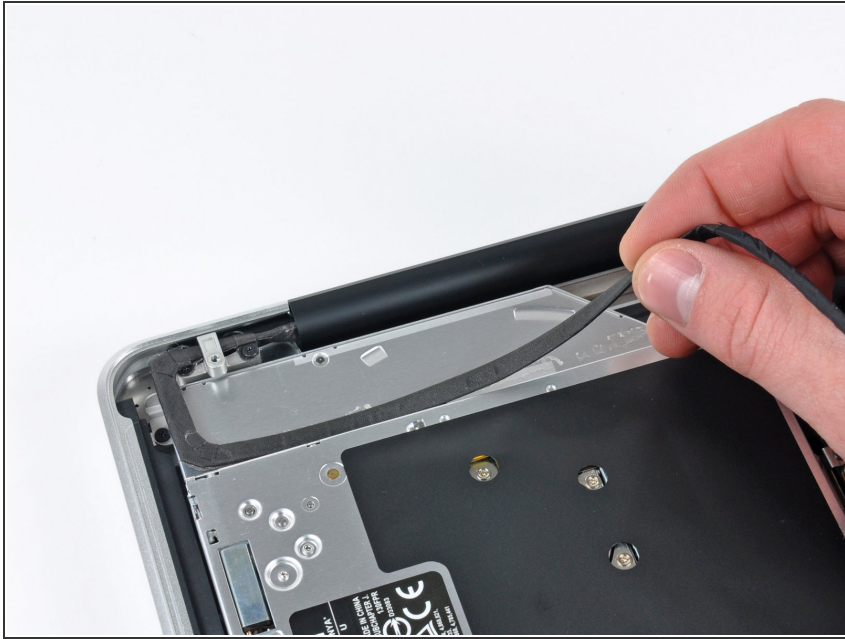
## Step 2



- Disconnect the camera cable by pulling the male end straight away from its socket.

**i** Pull the connector parallel to the face of the logic board, not straight up.

## Step 3




- Peel the camera cable off the adhesive securing it to the optical drive.

## Step 4



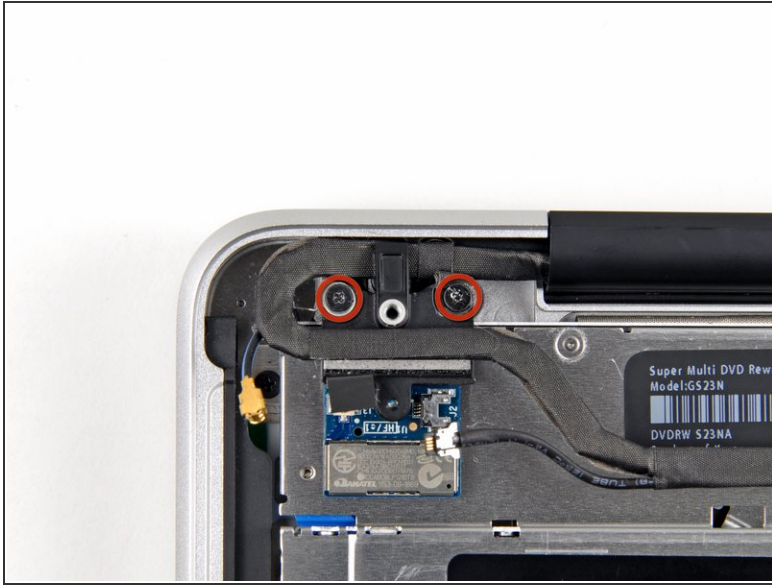
 This step is only required if you have an anti-glare display. If you have a glossy display, skip this step.

- Disconnect the Bluetooth cable by pulling the male end straight away from its socket.

 Pull the connector parallel to the face of the logic board, not straight up.

- Use the flat end of a spudger to pry the Bluetooth antenna cable from its socket on the board.

## Step 5

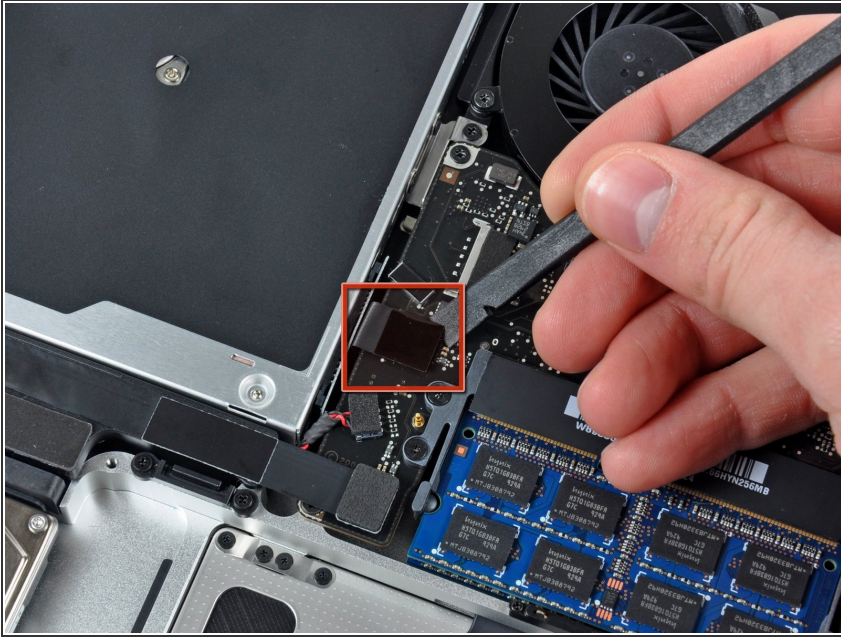


- i** This step is only required if you have an anti-glare display.

  - Remove the two 8 mm Phillips screws securing the Bluetooth/camera cable retainer to the upper case.
- i** One of the screws may remain captive in the Bluetooth/camera cable ground loop. If replacing the display, be sure to transfer this screw to the new unit.

  - Lift the Bluetooth board/cable retainer assembly out of the upper case.

## Step 6



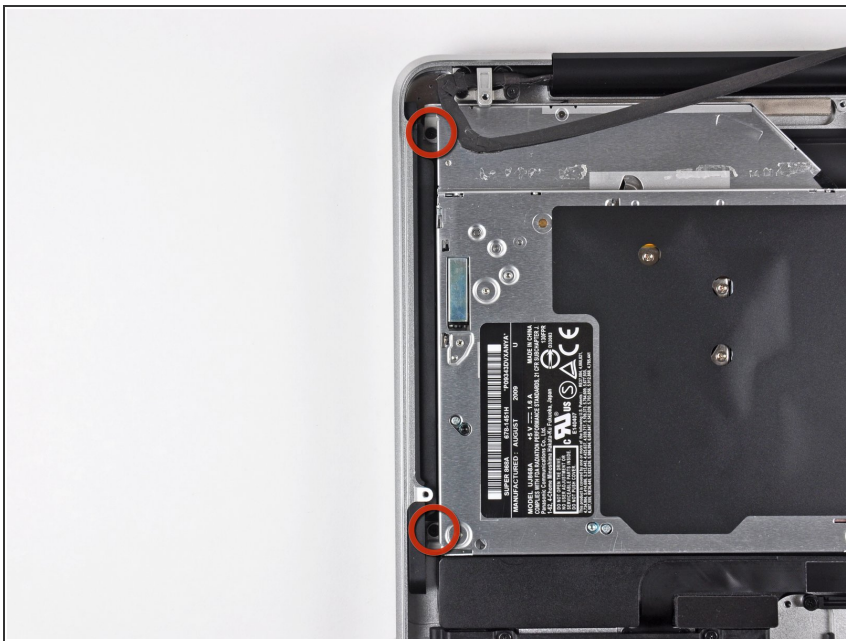
- Use a spudger to pry the optical drive connector straight up off the logic board.

## Step 7



- Remove the single 3.5 mm Phillips screw securing the inner side of the optical drive to the upper case.

## Step 8



- Remove the two 3.5 mm Phillips screws securing the outer side of the optical drive to the upper case.

## Step 9



- Lift the optical drive from its left edge and pull it out of the upper case.

To reassemble your device, follow these instructions in reverse order.