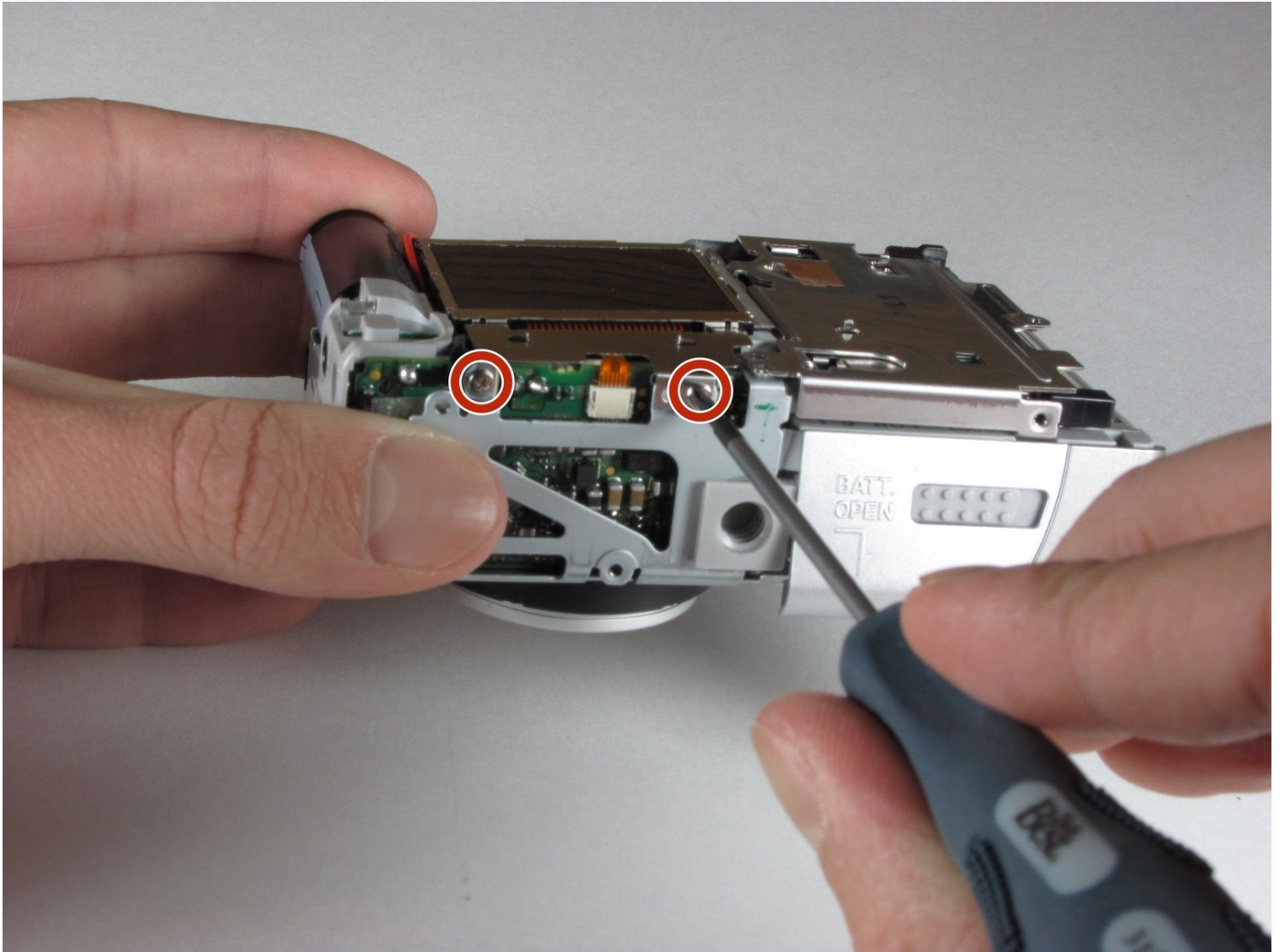




# Canon Powershot A70 LCD Screen Replacement

This repair guide will explain, step-by-step...

Written By: Shalan Ertis



# INTRODUCTION

This repair guide will explain, step-by-step the process necessary to replace the LCD Screen.

## TOOLS:

Fingers (1)  
Phillips #00 Screwdriver (1)  
iFixit Opening Tool (1)

## PARTS:

replacement LCD screen (1)

### Step 1 — Shutter/Speaker Panel



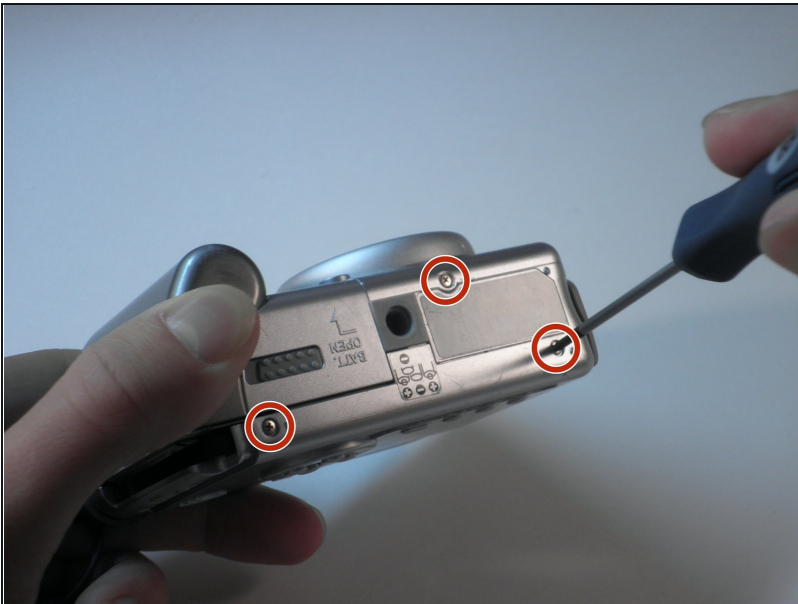
- Open the battery compartment and remove the batteries.
- Remove the two screws that are deep in the battery compartment with a Phillips #00 screwdriver.

## Step 2



- Open the CF compartment and remove the top screw with a Phillips #00 screwdriver.
- The panel that holds the shutter button and zoom will come off.  
**⚠ Be careful! There are two small wires connecting the speaker to the body of the camera. These are very delicate so proceed with caution. Do not remove.**

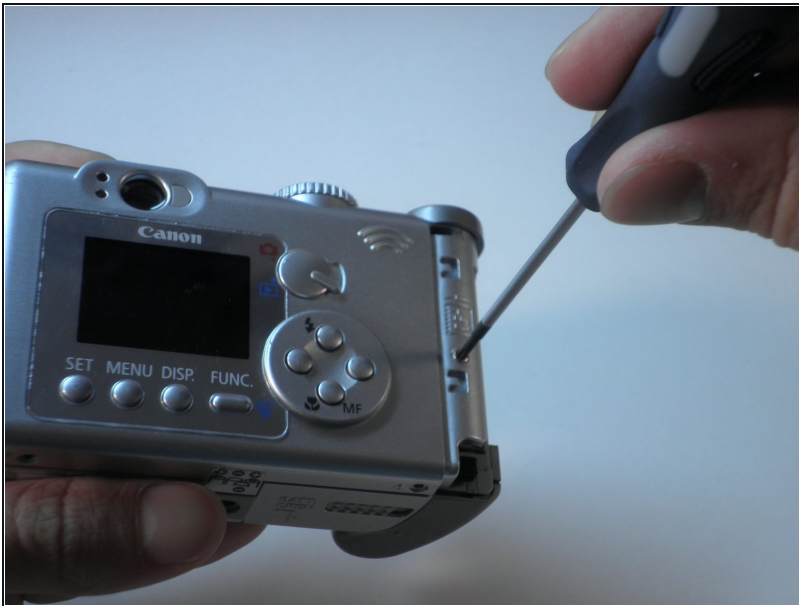
## Step 3 — Rear Exterior Panel



- Unscrew the three small screws on the bottom of the camera with a Phillips #00 screwdriver.
- Remove the wrist strap.



## Step 4



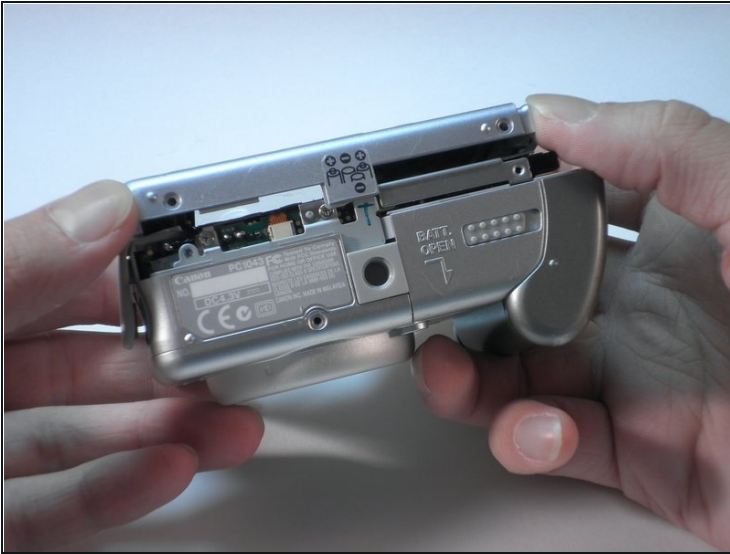
- Remove the screw in the CF compartment with a Phillips #00 screwdriver.

## Step 5



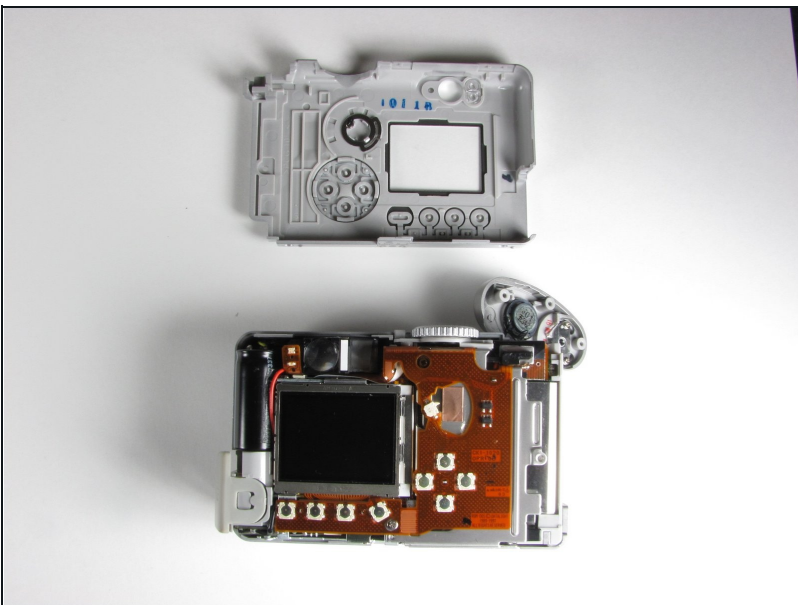
- Open the rubber Digital AV Out compartment flap.
- Pry the battery with an opening tool.
- Carefully pull out the battery with two fingers.
- Remove the two screws that are now visible with a Phillips #00 screwdriver.

## Step 6



- Starting from the bottom, carefully pull the casing off.
- The casing will now pivot at the top.
  - There are three catches that hold the back casing to the body.
- ① You may have to pull with some force. The rear panel will make a snapping noise when it separates from the body.

## Step 7



- The interior of the camera should look like this.

## Step 8 — Front Exterior Panel



- Remove the two screws at the top of the battery compartment with a Phillips #00 screwdriver.

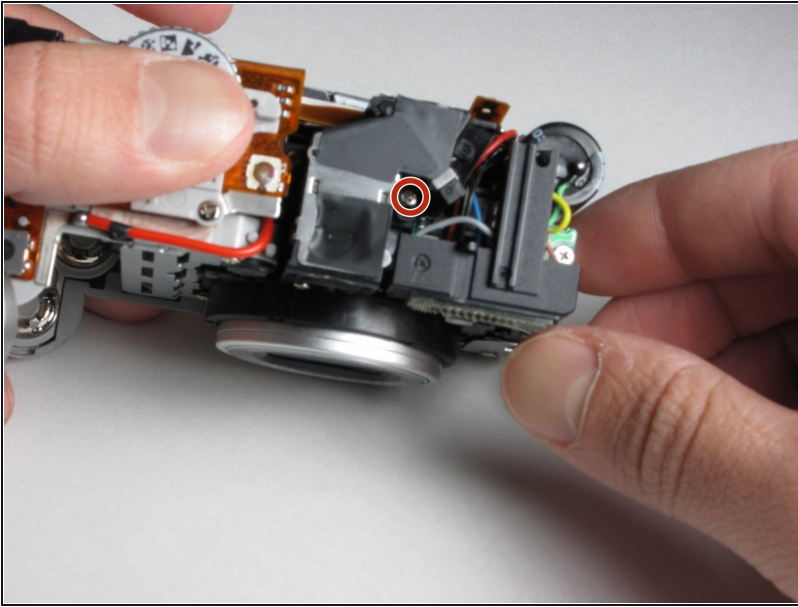
## Step 9



- With your right thumb, pull back on the tab while using your left hand to pull the face of the camera away from the body.

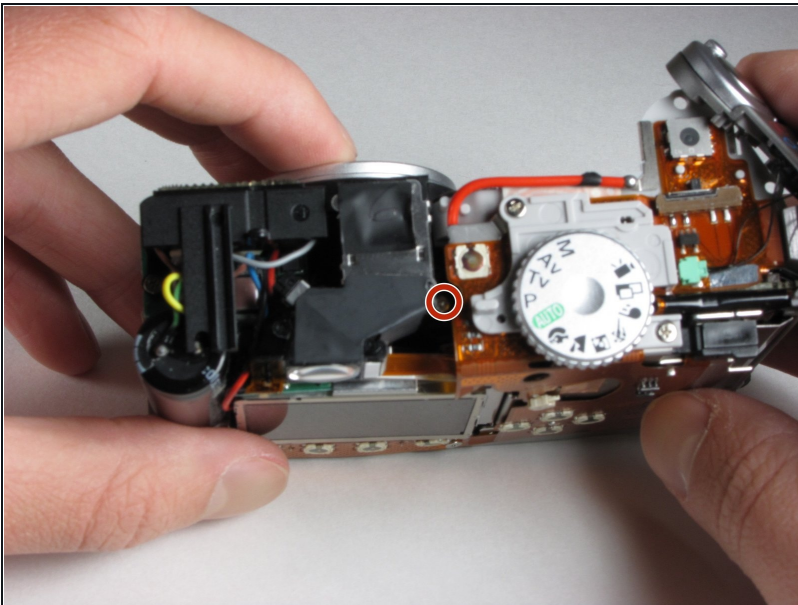


## Step 10 — Viewfinder



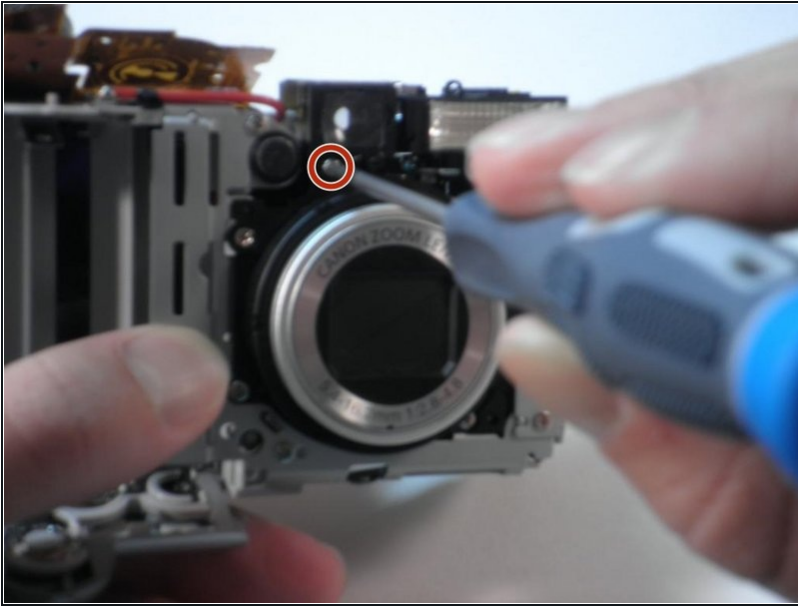
- After removing the front and rear panels, locate the viewfinder directly above the lens on top of the camera.
- Three screws hold the viewfinder in place: two on the top and one on the lens side of the camera.
- First, remove the screw in the bent corner of the viewfinder with a Phillips #00 screwdriver.

## Step 11



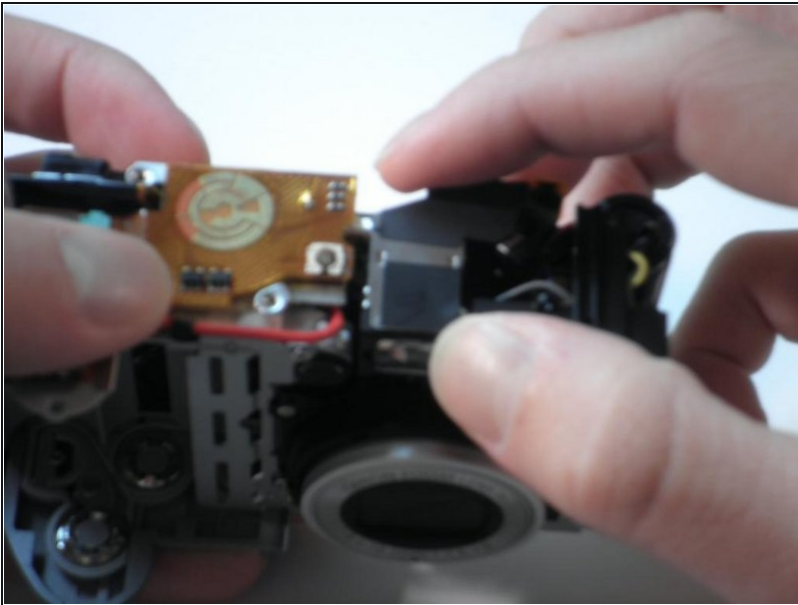
- Remove the second screw directly across from the bent corner.
- ① It may be hidden in the space under the orange circuitry with a Phillips #00 screwdriver.

## Step 12



- Remove the final screw directly under the left side of the viewfinder (on the lens side) with a Phillips #00 screwdriver.

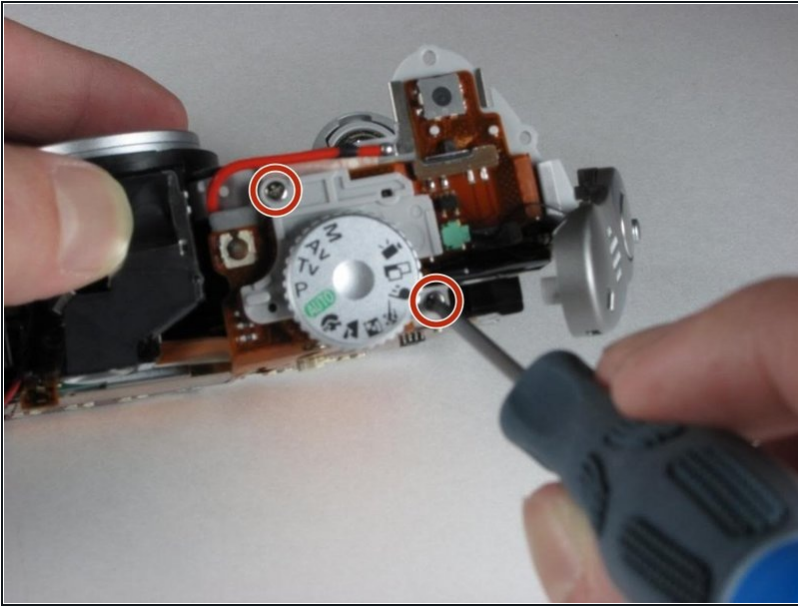
## Step 13



- After removing the three screws, the only thing still holding the viewfinder in place is a small plastic peg.
- Remove the viewfinder with a firm pull directly upwards.

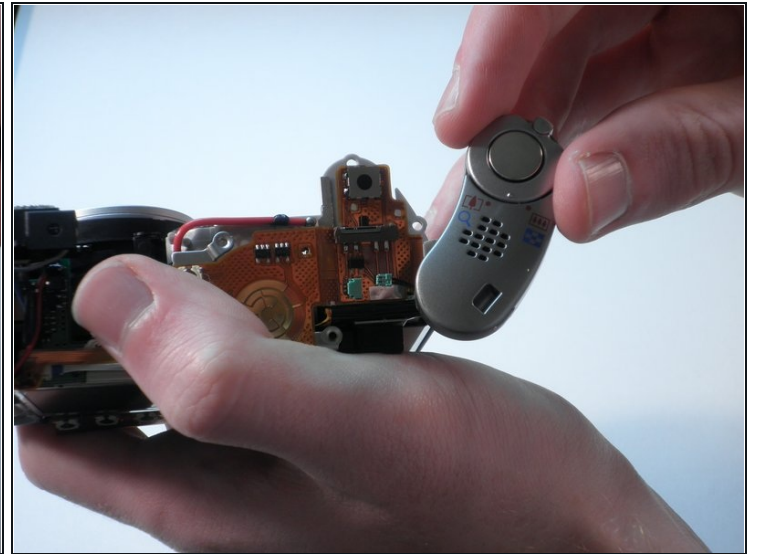
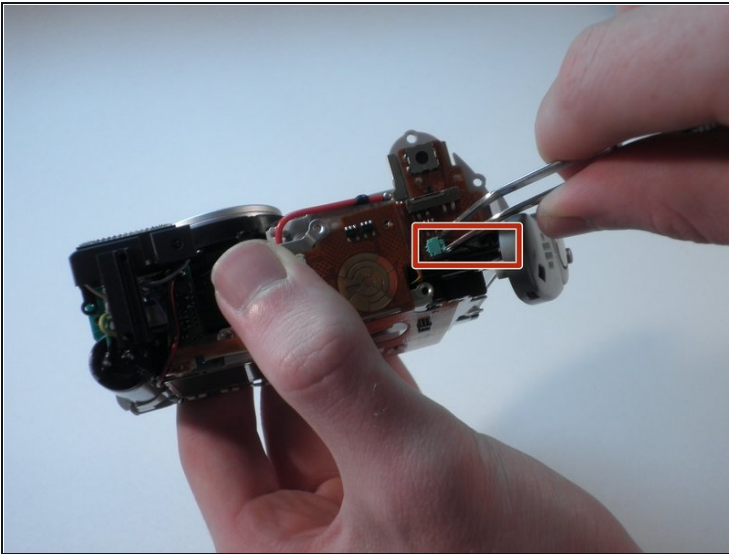


## Step 14 — Speakers



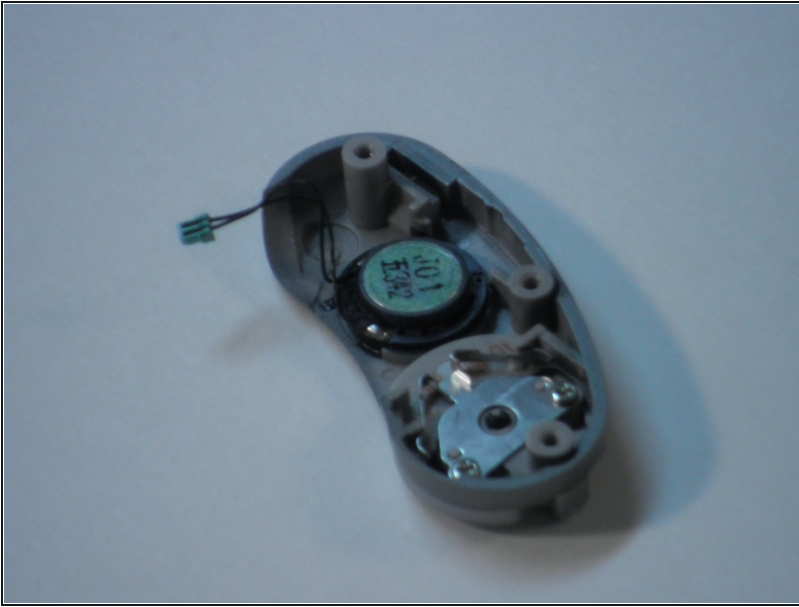
- Remove the two clearly visible screws from the control dial with a Phillips #00 screwdriver.
- Remove the dial—it should come off easily.

## Step 15



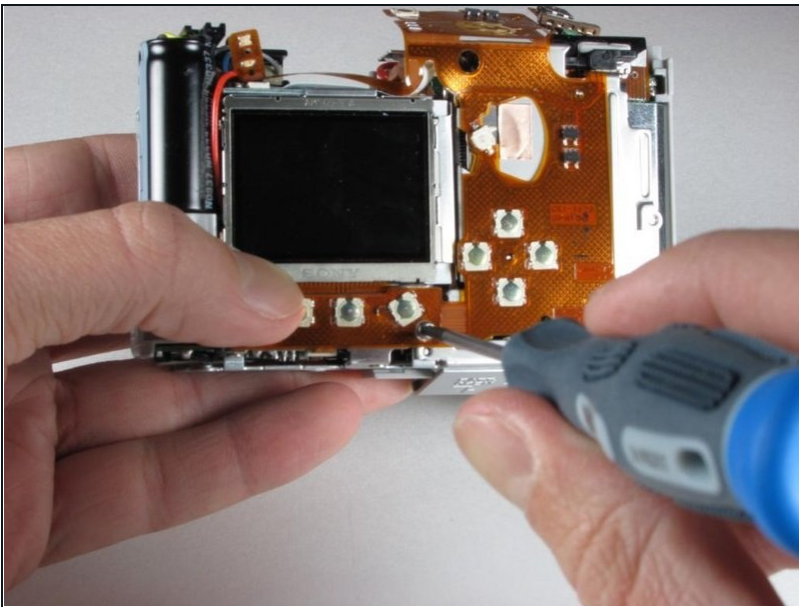
- With [tweezers](#), carefully unplug the two small wires from the green plug.
- Carefully replace the broken speaker/shutter panel with a new one.

## Step 16



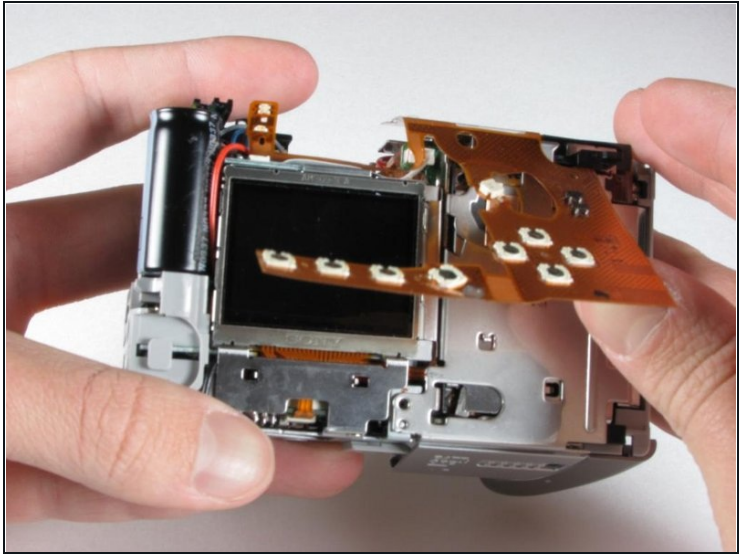
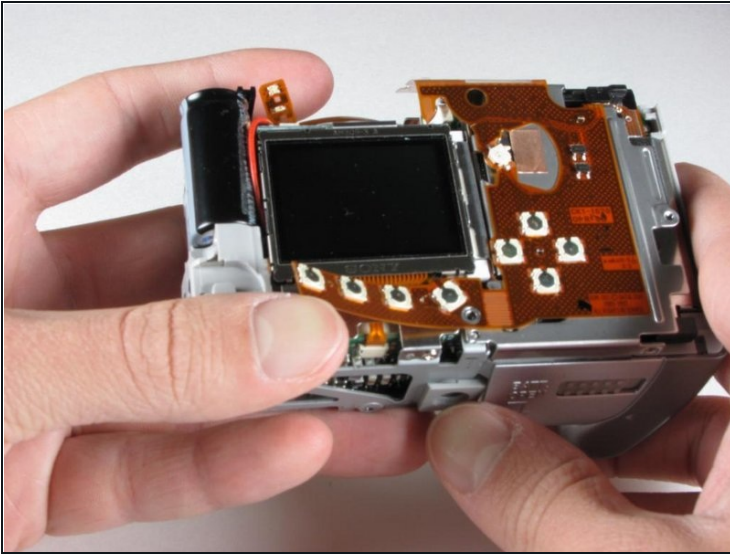
- The removed panel should look like this.

## Step 17 — Button Flex Assembly



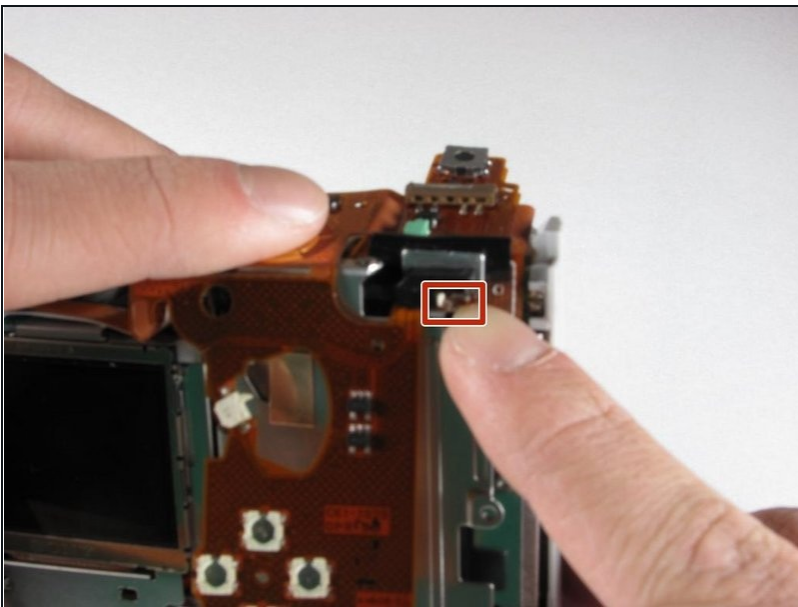
- Using a Phillips #00 screwdriver, remove the one visible screw that attaches the flex assembly to the back of the camera.

## Step 18



- Starting with the bottom-left corner (below the screen), lift the flex assembly away from the camera chassis.

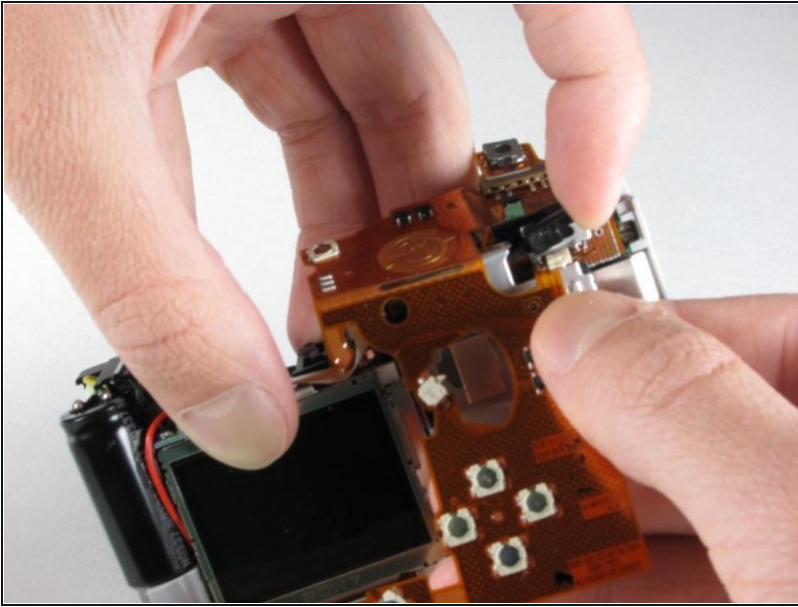
## Step 19



- Use your finger to release the small metal tab that attaches the flex assembly to the upper-right corner of the camera.
- ① The tab is very small and may be hard to see.



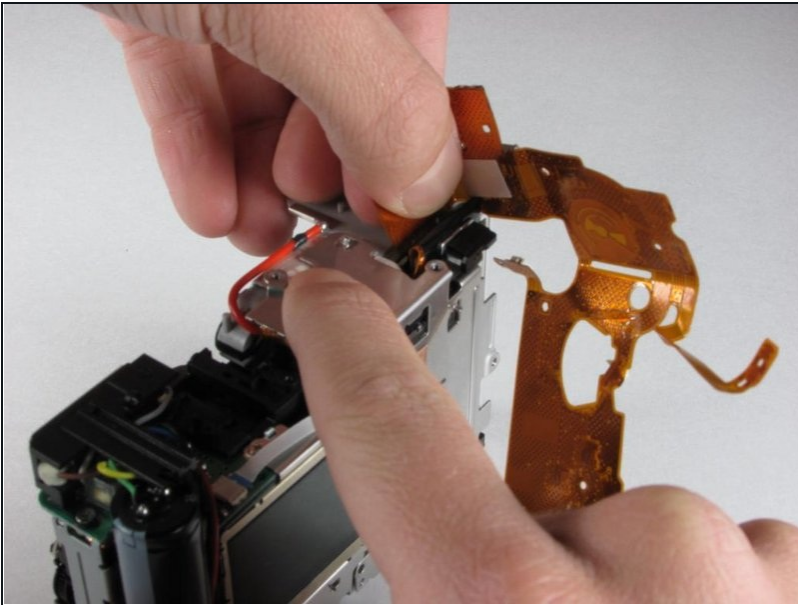
## Step 20



- Disconnect the black connector by lifting it up.

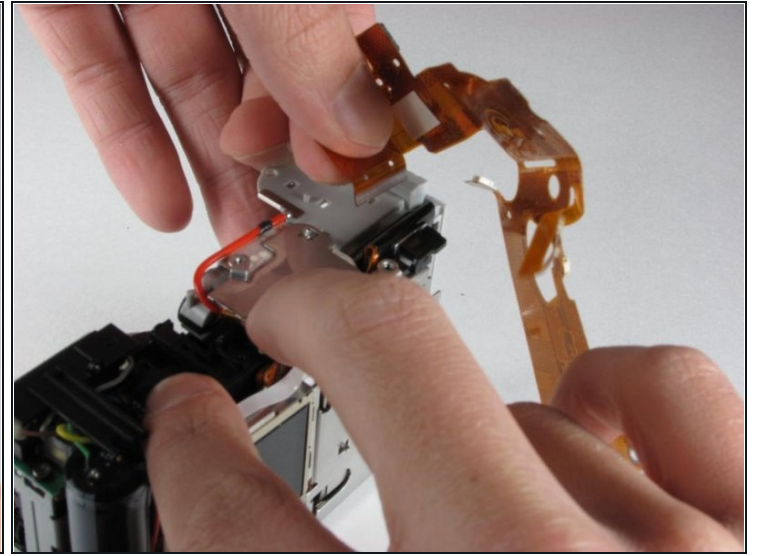
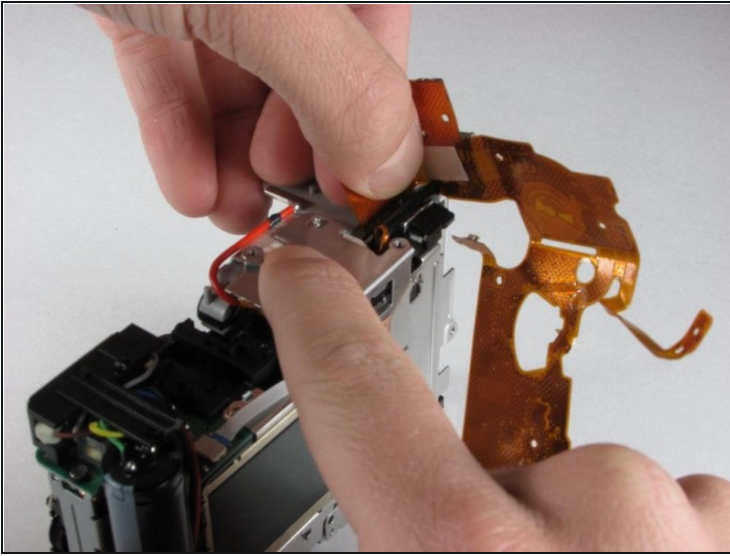
⚠ Potential for device damage:  
You may damage the flex assembly if you forcibly remove it without disconnecting the connector.

## Step 21



- Gently pull the rest of the flex assembly away from the camera body until you reach the last connector.

## Step 22



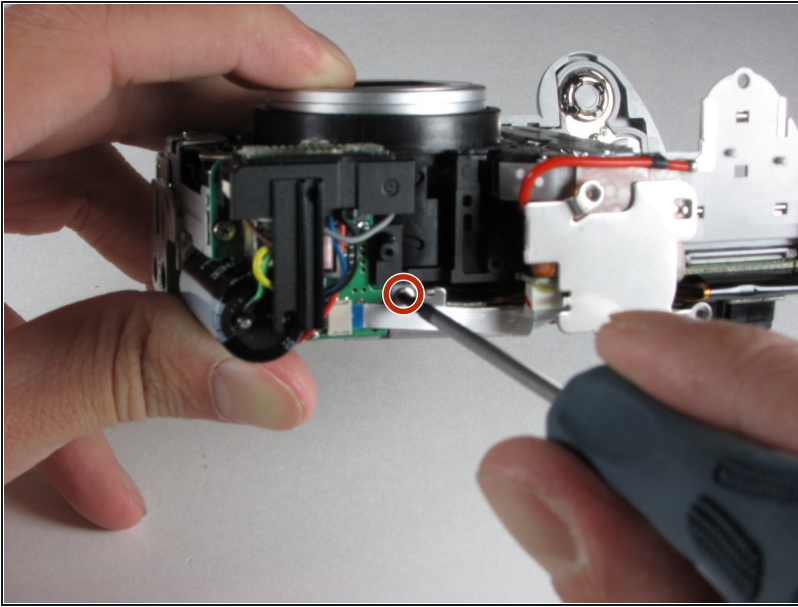
- Hold the flex assembly gently but firmly, and pull it out of the connection with two fingers.
  - ① Be sure to pull straight up, not at an angle.

## Step 23 — LCD Screen



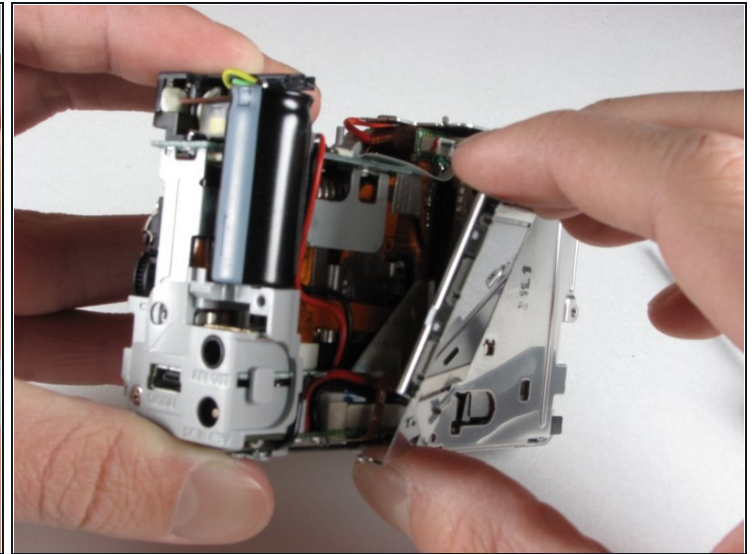
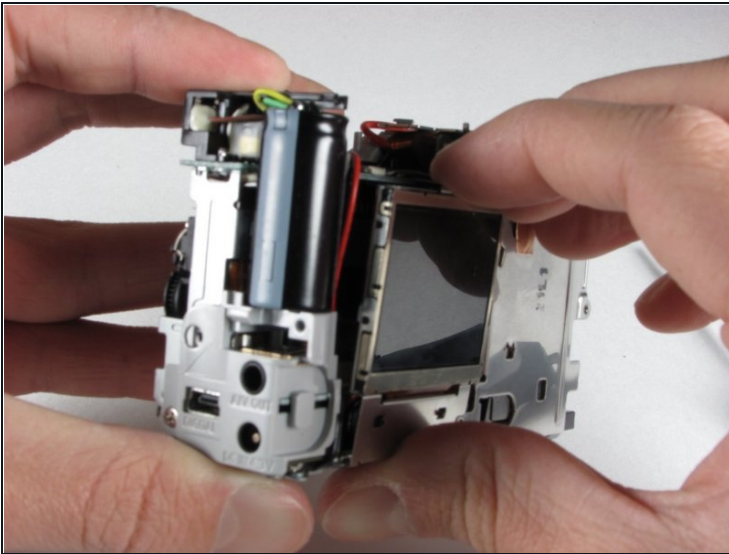
- Remove the two screws from the bottom of the camera with a Phillips #00 screwdriver.

## Step 24



- Remove the last screw located on the top of the camera with a Phillips #00 screwdriver.

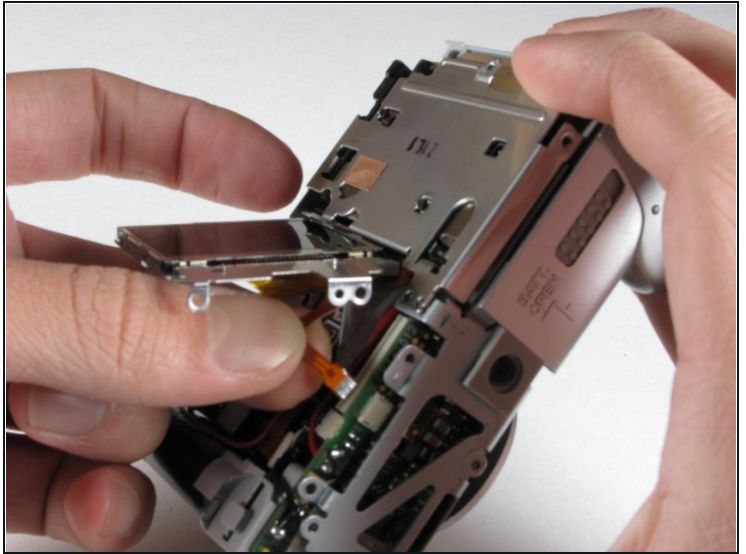
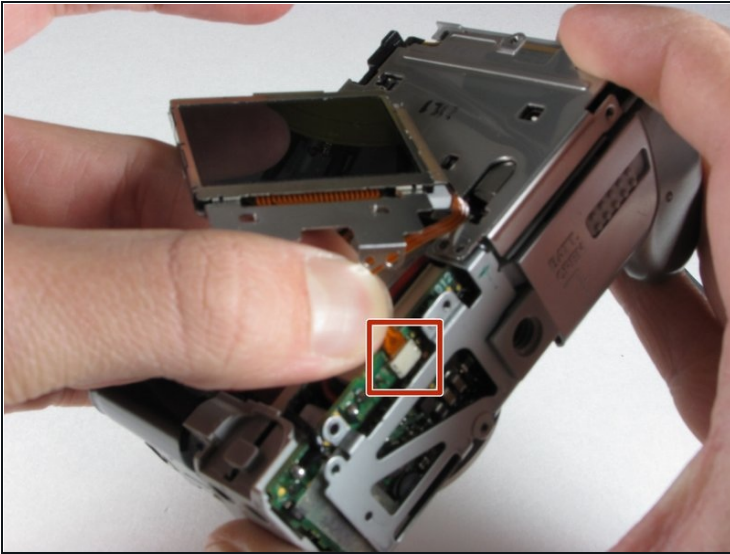
## Step 25



- The screen should no longer be screwed to the body.
  - Gently push the screen down and then pull it away from the body of the camera.
- ① It will swing away, because it is still plugged into the camera.

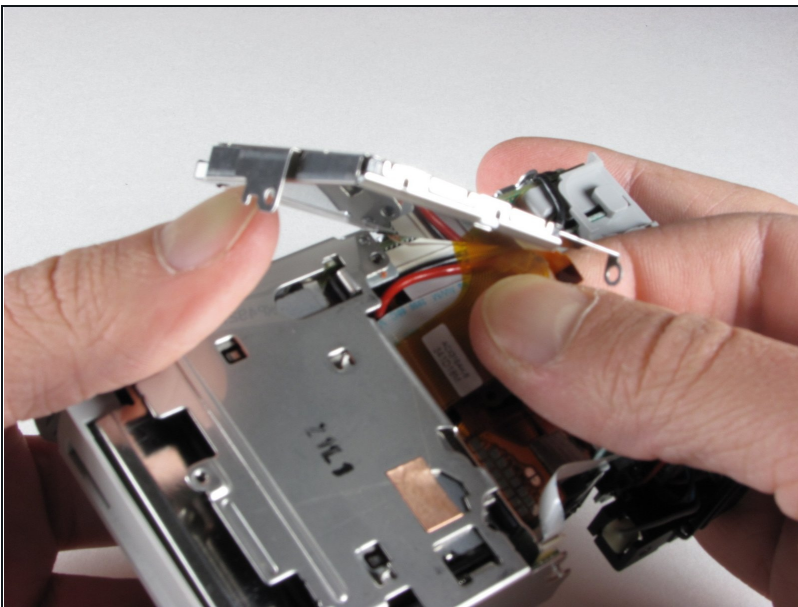


## Step 26



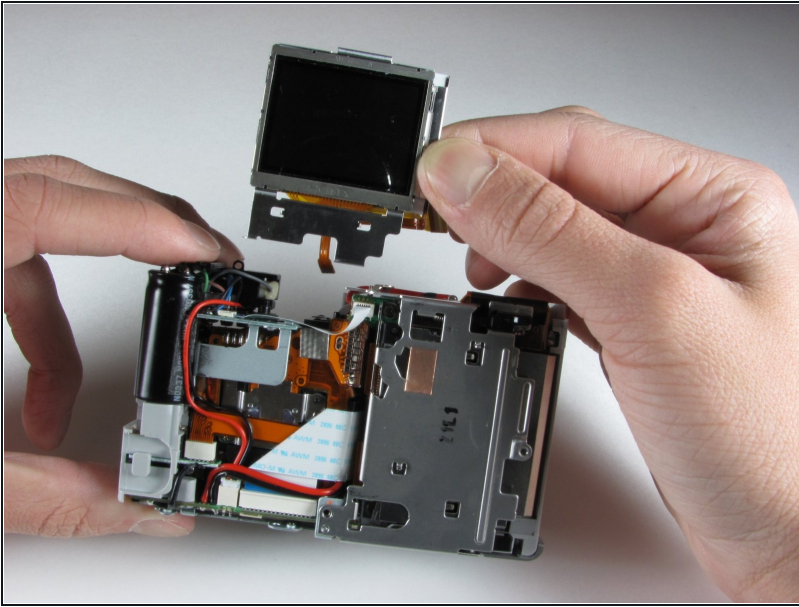
- Unplug the thin orange ribbon cable (located towards the bottom of the camera) by carefully pulling it away from the white connector.

## Step 27



- Finally, repeat the previous step with the thick orange strip located on the side of the screen.

## Step 28



- You have successfully removed the LCD screen. The camera is now ready for the replacement screen.

---

To reassemble your device, follow these instructions in reverse order.