



PSP 1000 Buttons Replacement

The PSP's buttons may become jammed or may not...

Written By: Henry Lee



INTRODUCTION

The PSP's buttons may become jammed or may not function properly. This guide will show how to access the buttons for repair, cleaning, or replacement.



TOOLS:

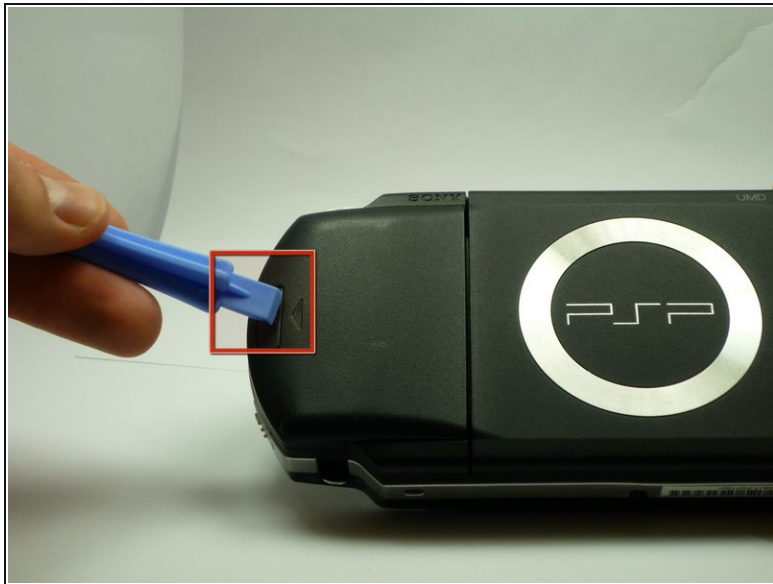
Phillips #00 Screwdriver (1)

Step 1 — Battery



- Turn the PSP over so its back is facing you.

Step 2



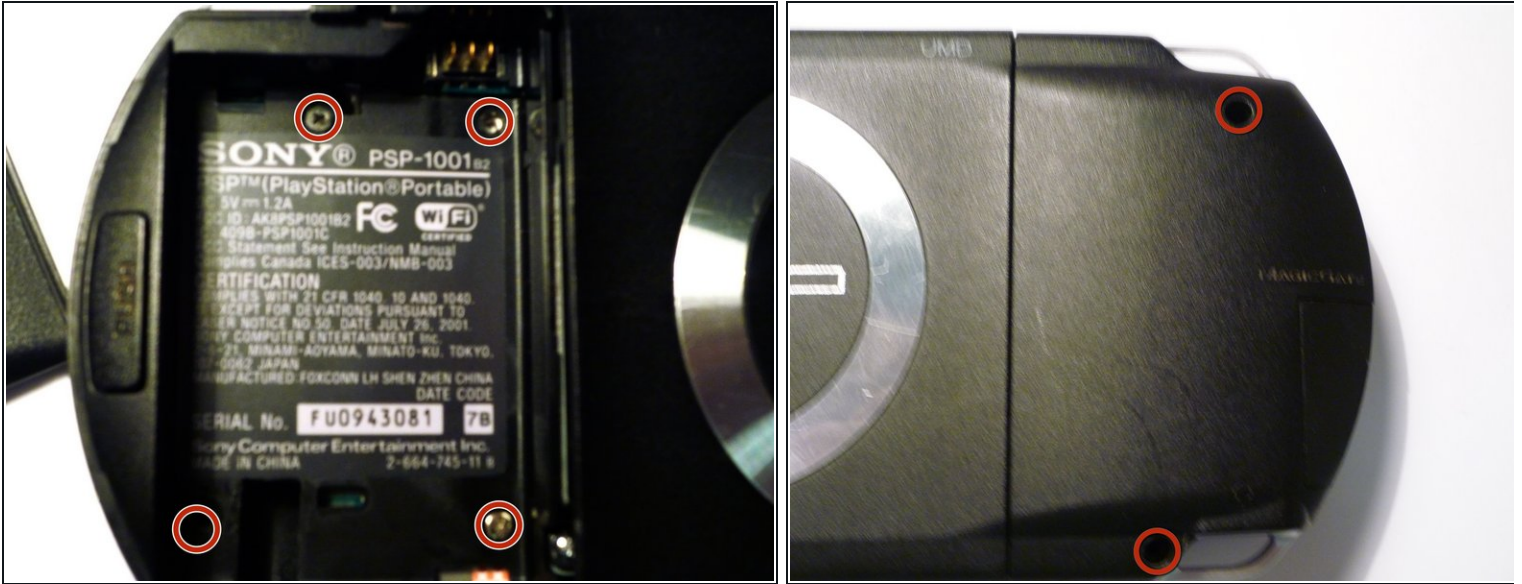
- Locate the battery casing button on the rear-left side of the PSP.
- Press down the button and remove the battery cover.

Step 3



- Using your finger, remove the battery upwards from the system as shown.

Step 4 — Front Casing



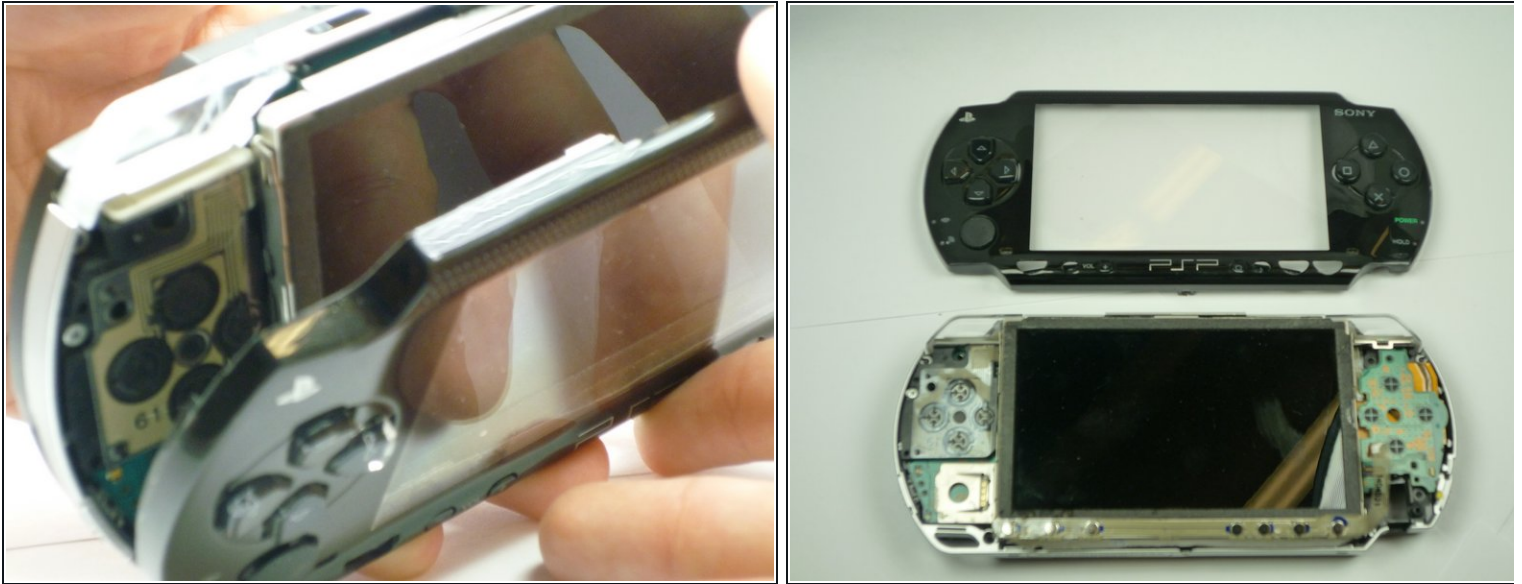
- Remove the four screws shown with a Phillips #00 screwdriver.
- ⓘ You will have to peel back the guarantee sticker to access the screw on the lower left.

Step 5



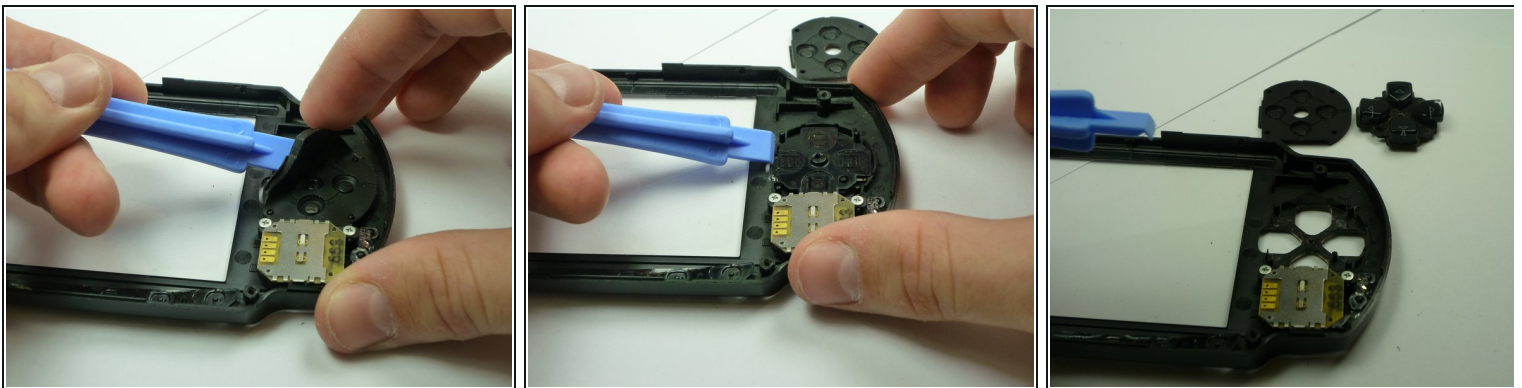
- Remove the screw from the bottom side of the PSP. Keep it separated from the rest of the screws.
- Remove screws from back righthand side within the holes.

Step 6



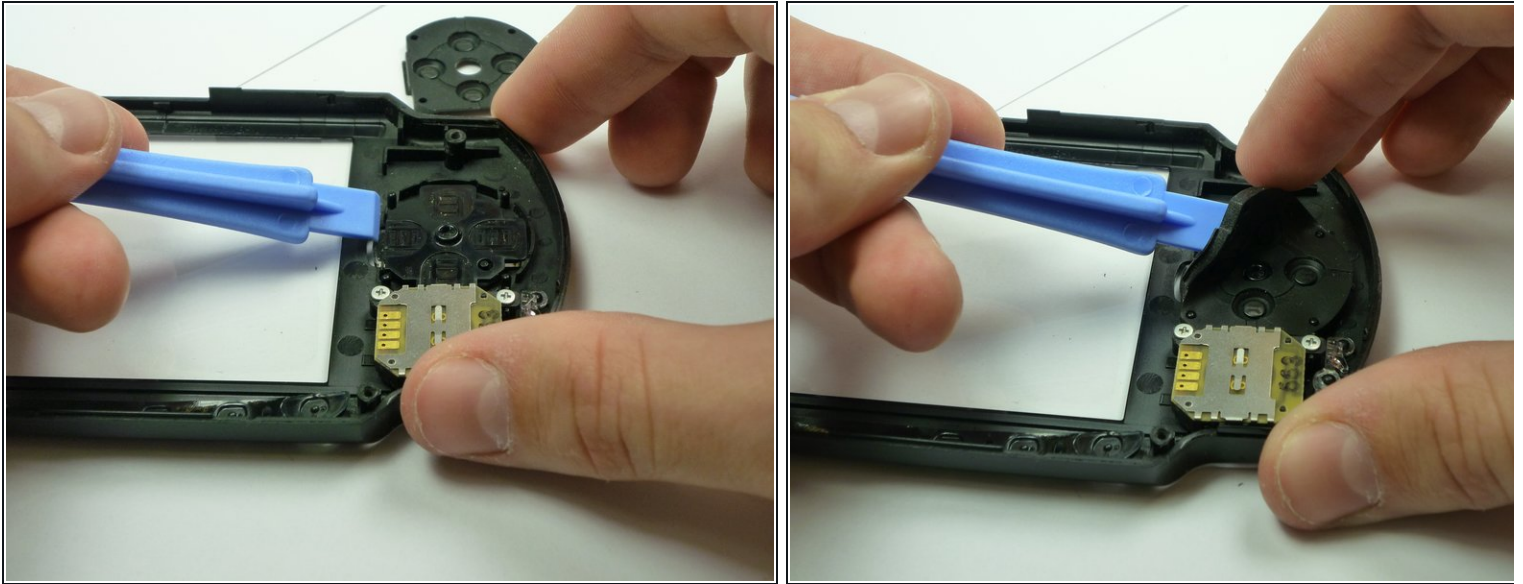
- Gently separate the outer plastic casing from the rest of the system as shown.

Step 7 — Buttons



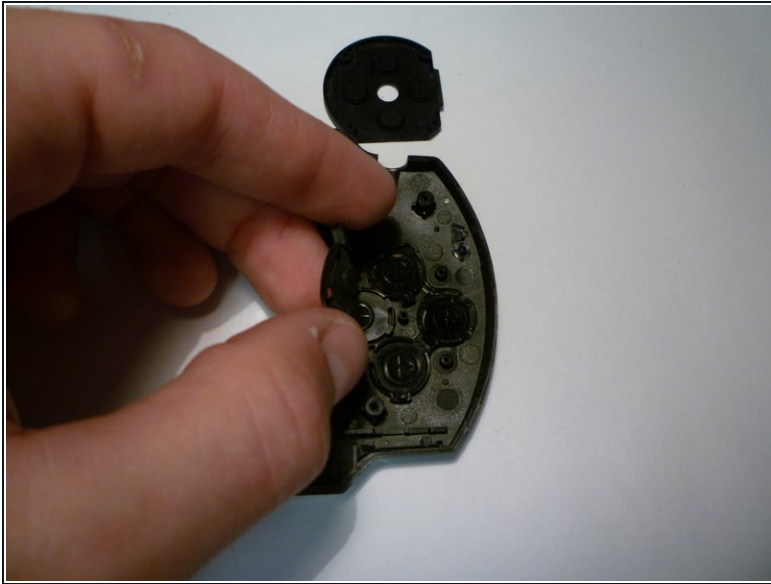
- If the Arrow Buttons are not functioning properly, flip over the outer casing and locate the inside of the buttons, as shown
- Carefully remove the black rubber backing off of the buttons.
- Clean the inside of the rubber and the outside of the buttons with a cloth.

Step 8



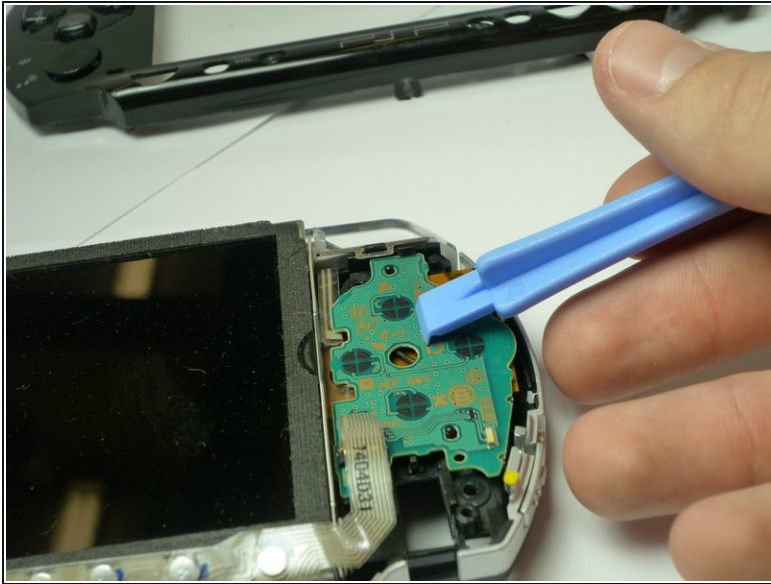
- If needed, replace the old buttons with a new set (which can be purchased from Sony or other electronics stores).
- ⚠ Carefully re-insert the buttons. This should not require excess force, as the buttons should fit if they are arranged correctly.
- Gently re-apply the back rubber to the back of the buttons.

Step 9



- If function buttons (x, square, circle, triangle) need to be replaced, find the corresponding black rubber backing on the inside of the casing.
- Carefully remove the back rubber to expose the rear side of the buttons as shown. (This can be done using your hands.)

Step 10



⚠ Next, carefully clean the receiving end of the buttons on the motherboard (shown on picture) with a cloth.

- If the buttons are clearly damaged, then they need to be replaced.
- Add the new ones in the form, with the correct button order. (The correct button order has the Triangle on the top, Square on the right, Circle on the left, and X on the bottom).

⚠ Be very careful! The buttons only go in one way. If you have trouble fitting them in, rotate them in their given spots until they fit in easily. Do NOT force them. Forcing the buttons in may cause damage.

Step 11



- Once buttons are correctly replaced, the back rubbers are fit back onto the buttons, refer back to [Replacing the Housing](#) to reattach the casing.

To reassemble your device, follow these instructions in reverse order.