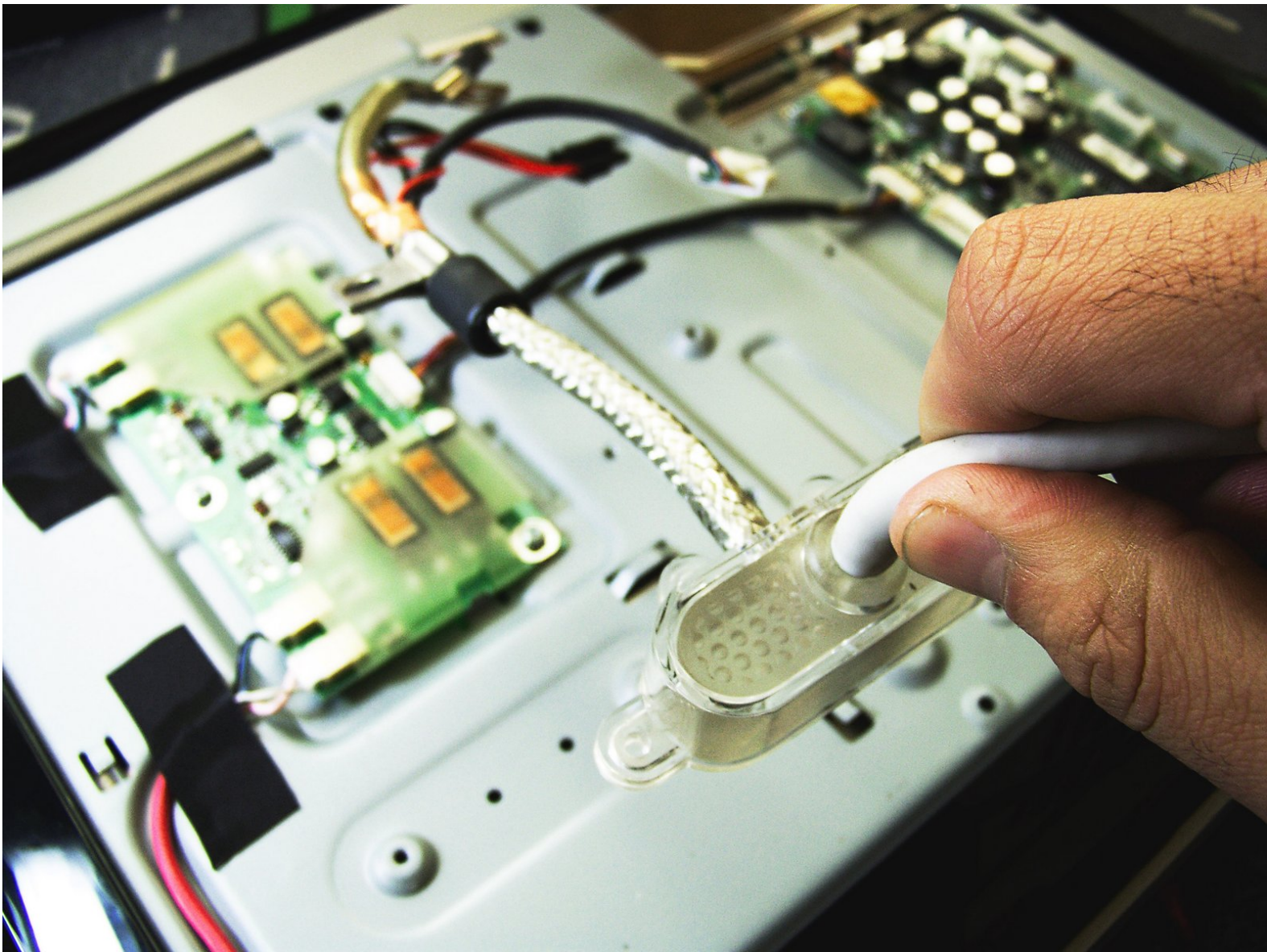




Apple Studio Display M7649 ADC Cable Replacement

Written By: Andrew Tsao



INTRODUCTION

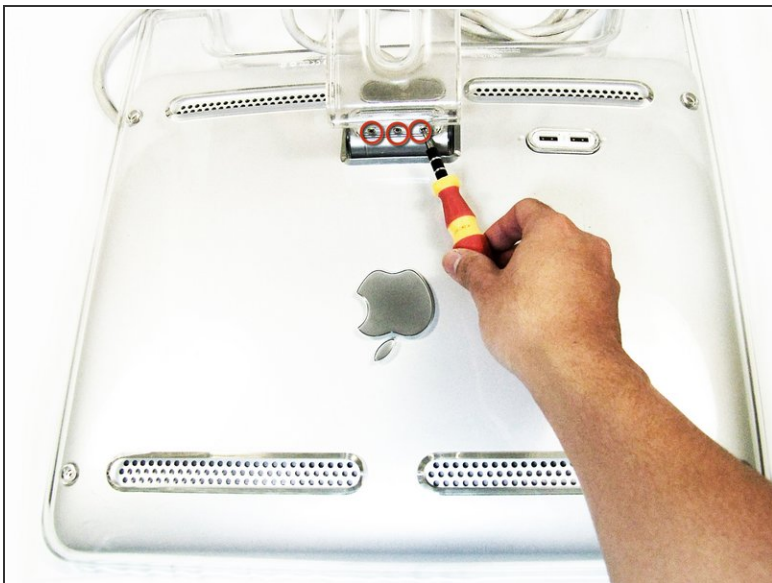
Replacing the ADC cable. This cable provides connection to the computer, along with supplying power to the display.



TOOLS:

- [2 mm Hex Screwdriver](#) (1)
 - [Phillips #0 Screwdriver](#) (1)
-

Step 1 — Stand



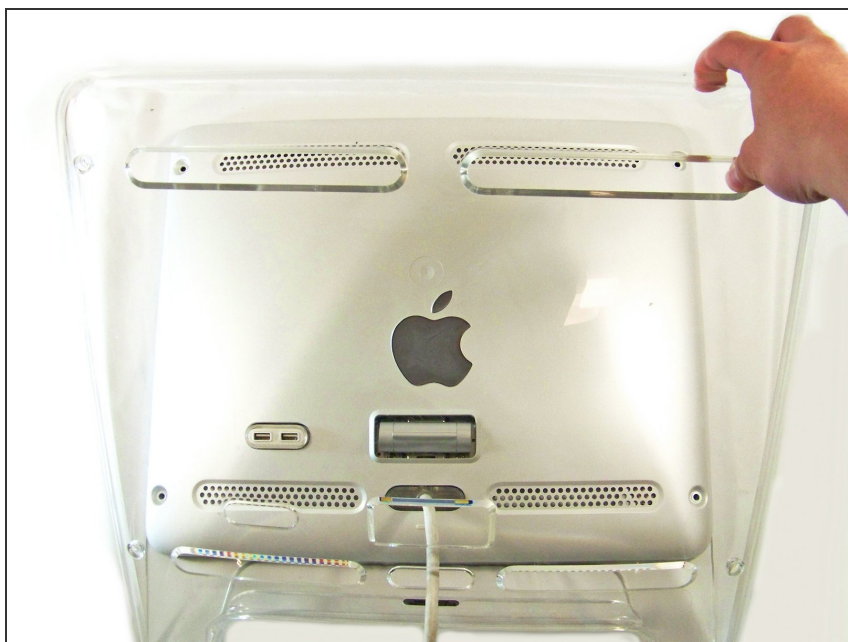
- Lay the display facing down with the stand away from you.
- Remove the three size 2.0 hex screws on the swing arm and remove the swing arm as well as the plastic shield under it.

Step 2 — Panels



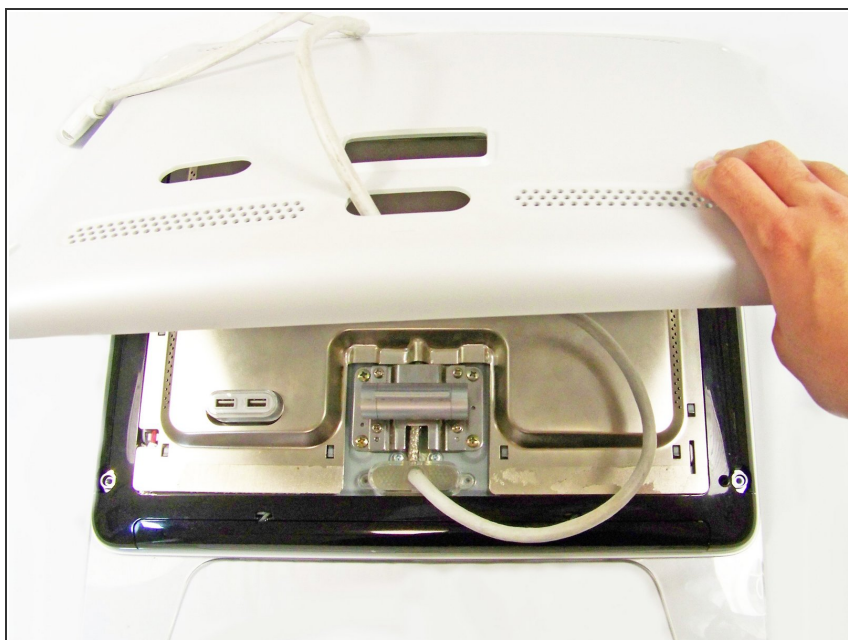
- Remove the size 2.5 hex screws from each corner that connects the panels to the display and remove them.

Step 3



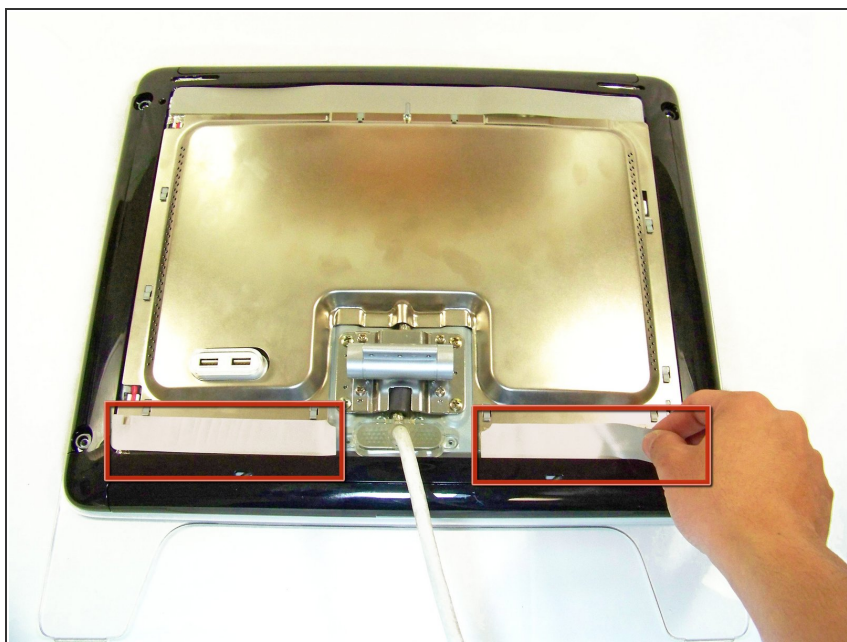
- Rotate the display so the legs of the display are now facing you
- Grip the top of the clear panel and lift it upwards, and pull the ADC cable through the hole.

Step 4



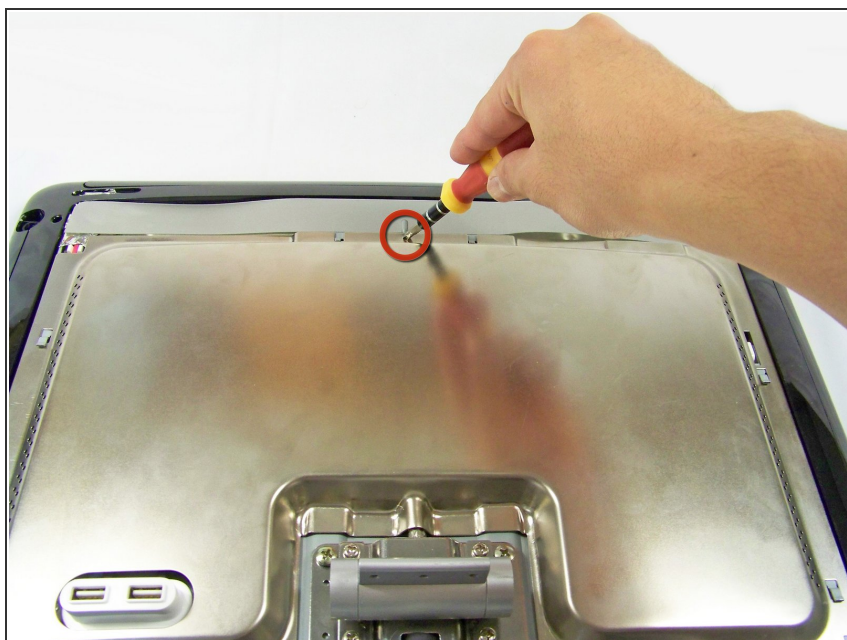
- Remove the grey back panel by lifting the bottom and pulling the ADC cable through the hole.

Step 5 — Metal EMI Shield



- The next layer will be a shiny metal panel, which might have some stickers. Make sure to remove these stickers.

Step 6



- Now locate and remove the lone Phillips screw holding the EMI shield to the display

Step 7



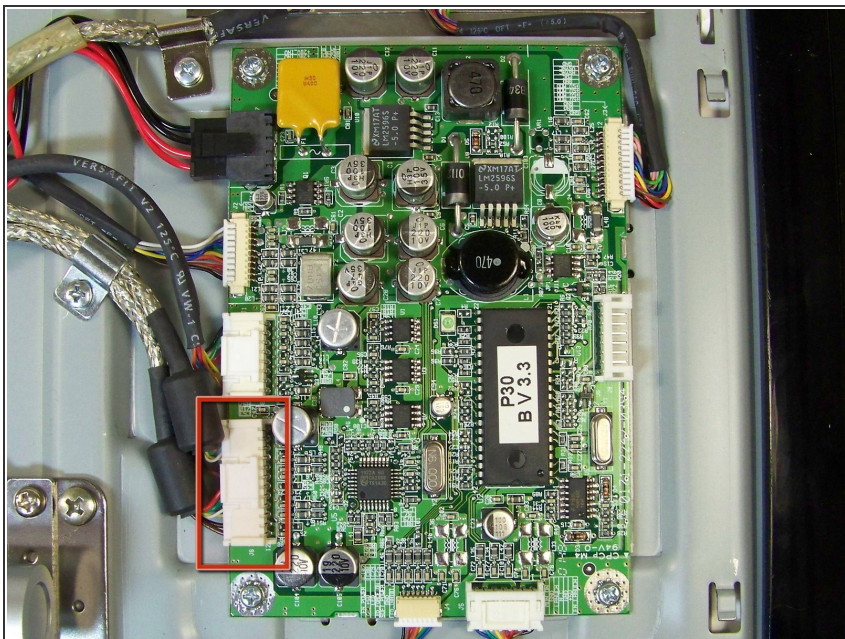
- Now that the screw has been removed, slide the panel towards your body and lift it out.
- ⓘ You may need to remove the clear USB port cover to remove the metal EMI shield.

Step 8 — USB Port



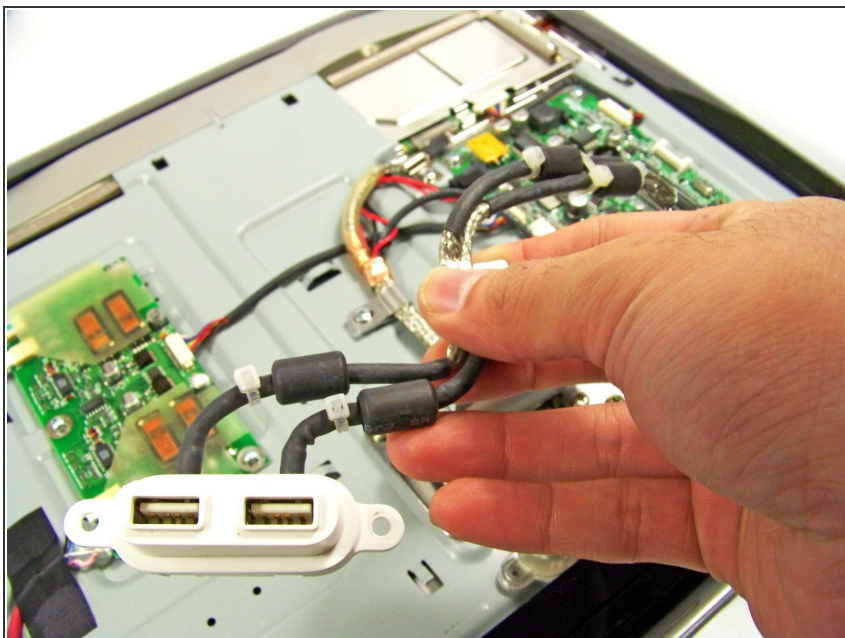
- To remove the USB port, remove these four screws holding down the port and metal brackets.
- ⓘ There may be a zip tie you need to cut that is attaching the USB unit to the display

Step 9



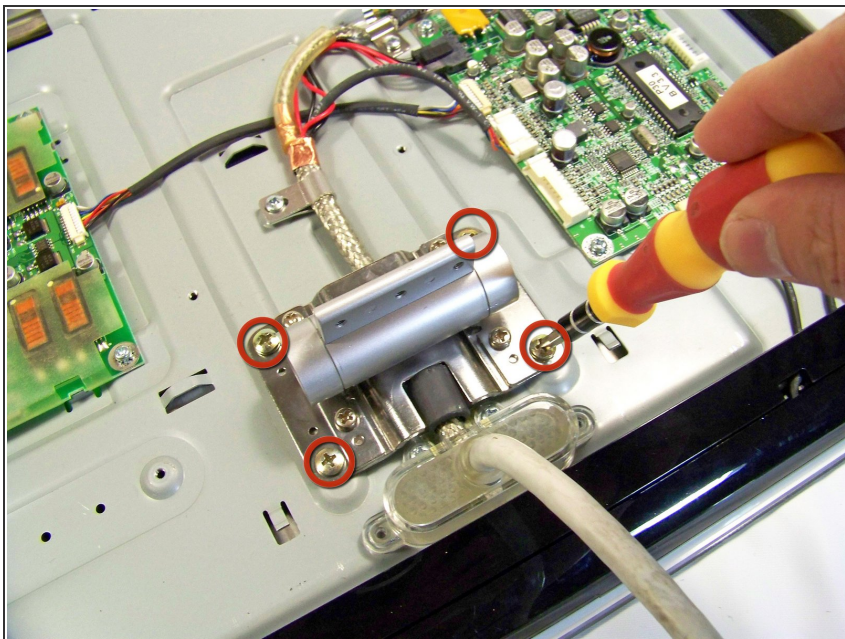
- Remove the cable from the logic board that is connecting the USB port.

Step 10



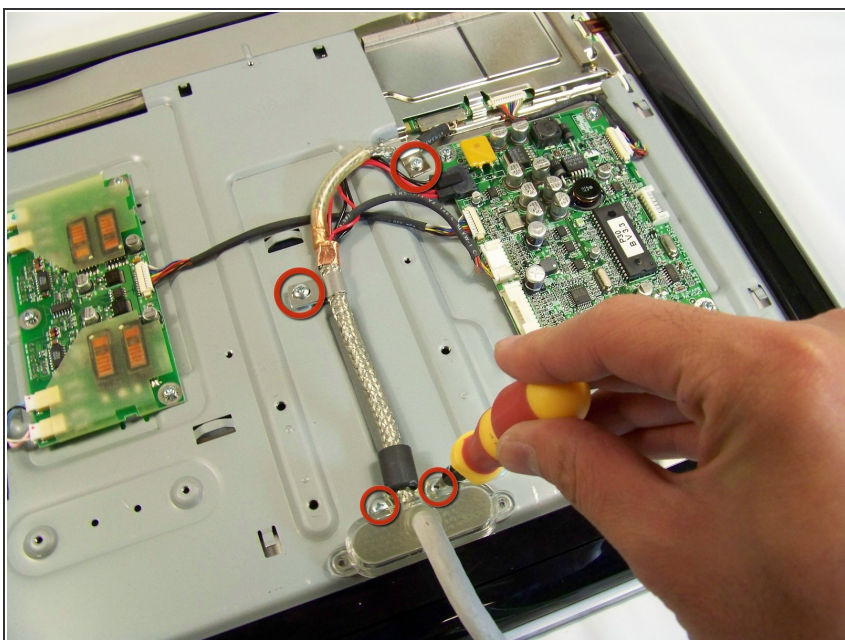
- Remove the USB port

Step 11 — ADC Cable



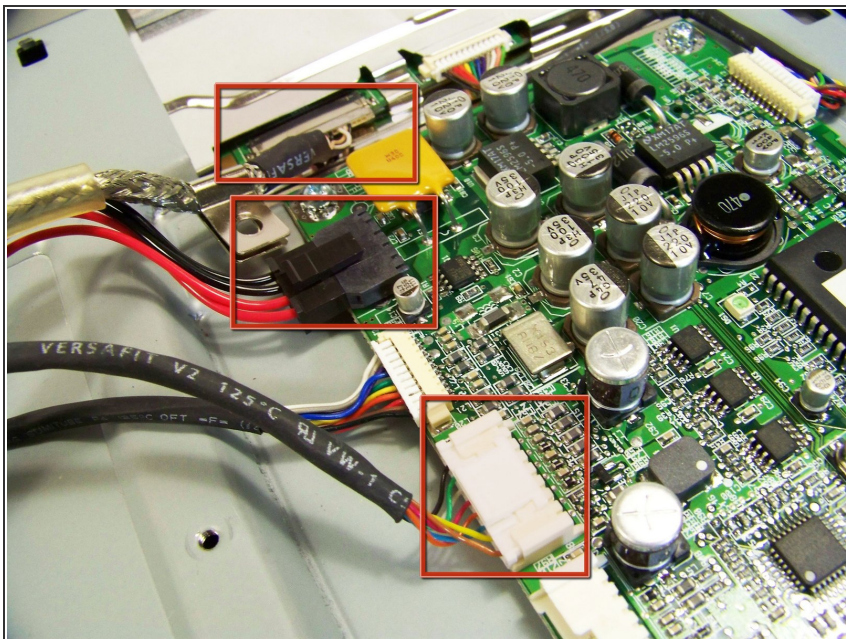
- Remove these four screws holding down the base of the swing arm to the display and remove it

Step 12



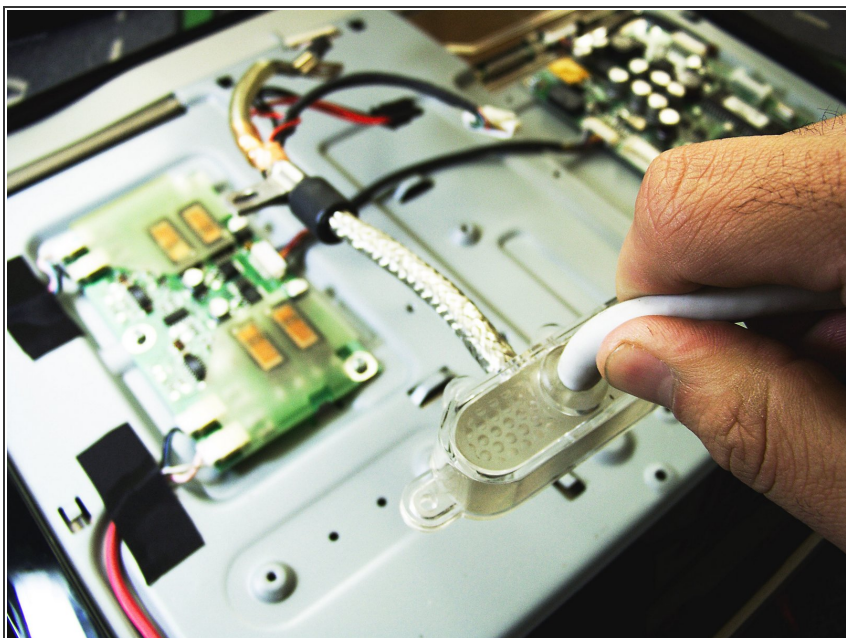
- Remove the four screws holding down the ADC cable to the display

Step 13



- Remove the three connections that connects the ADC assembly to the logic board and screen

Step 14



- Remove and replace the ADC cable assembly.

To reassemble your device, follow these instructions in reverse order.