



Cobra 29 LTD Classic Outer Cover Replacement

This guide shows you how to remove and replace the Cobra 29 LTD Classic's steel cover.

Written By: Chase



INTRODUCTION

This outer cover is the main cover that protects the inner electrical components. Perform the guide on a flat non-conductive surface to avoid electrical shock and damage to your device.



TOOLS:

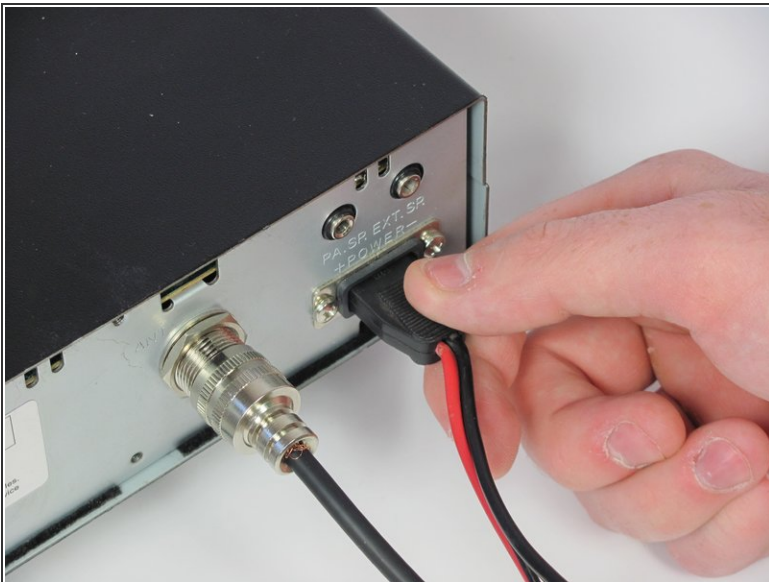
- [Phillips #1 Screwdriver](#) (1)
-

Step 1 — Power Cable



- Turn the power switch, the leftmost knob, counterclockwise to off.

Step 2



- Turn the device around and firmly pull the power cable plug to remove it from the radio.

Step 3 — Antenna Cable



- Unscrew the securing cap counterclockwise from the antenna connector.

Step 4



- Gently pull the antenna cable to remove it from the back of the radio.

Step 5 — Microphone



- Unscrew the cap counterclockwise on the microphone plug to disconnect the cable.

Step 6



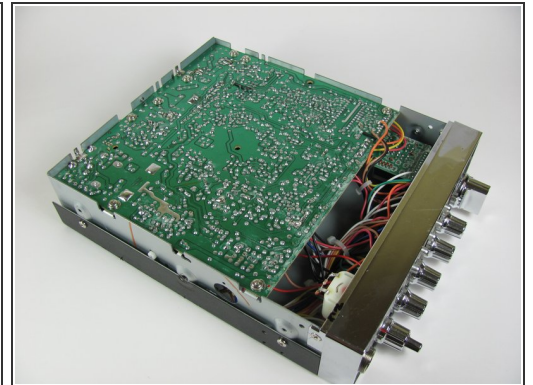
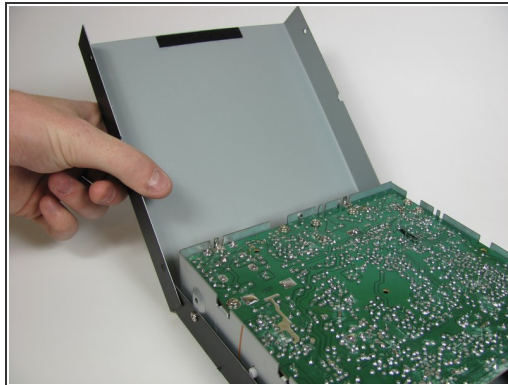
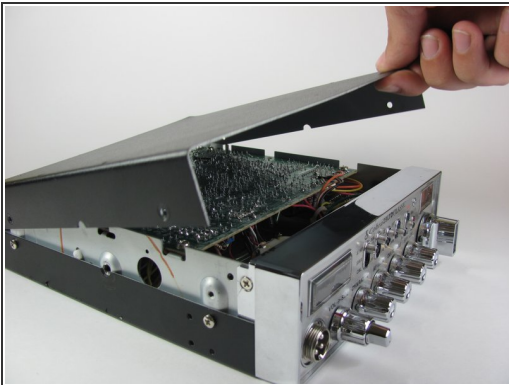
- Gently unplug the microphone plug.

Step 7 — Outer Cover



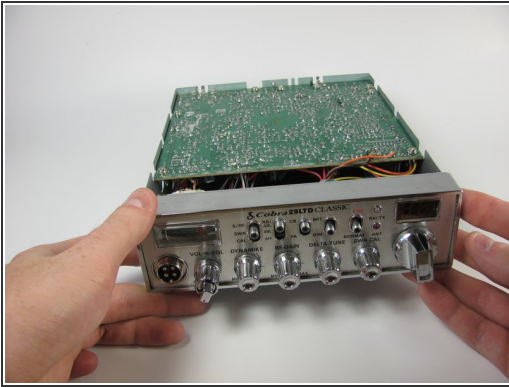
- Unscrew the top four 6.0mm Phillips head screws counterclockwise on the left and right side of the device using a #1 Phillips head screwdriver.


Step 8



- Gently lift and remove the top cover.

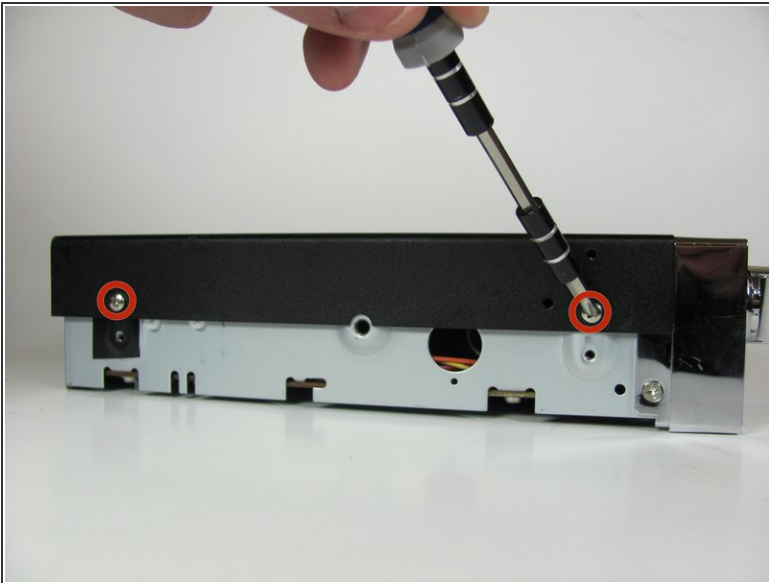
Step 9



 Gently set down on a hard, flat, non-conductive surface to minimize risk of shock or breaking your radio.

- Carefully flip the radio over.


Step 10



- Unscrew the four 6.0mm Phillips head screws counterclockwise on the left and right side of the device that connect the remaining cover, using a #1 Phillips head screwdriver.

Step 11



 Watch out for the wires connected to the speaker. These short wires will not allow you to move the cover very far.

- Gently lift and remove the case cover.

To reassemble your device, follow these instructions in reverse order.