



# Samsung TFT Color YP-T7J Motherboard Replacement

This guide will get you to all the components on the motherboard including the memory card along radio chip with other hardware.

Written By: Dylan Peters



This document was generated on 2020-11-26 08:26:08 AM (MST).



## TOOLS:

- [iFixit Opening Tools](#) (1)
  - [Phillips #0 Screwdriver](#) (1)
-

## Step 1 — The Back Cover



- Remove the 2 screws on the back cover using a Phillips head #0 screwdriver.

## Step 2



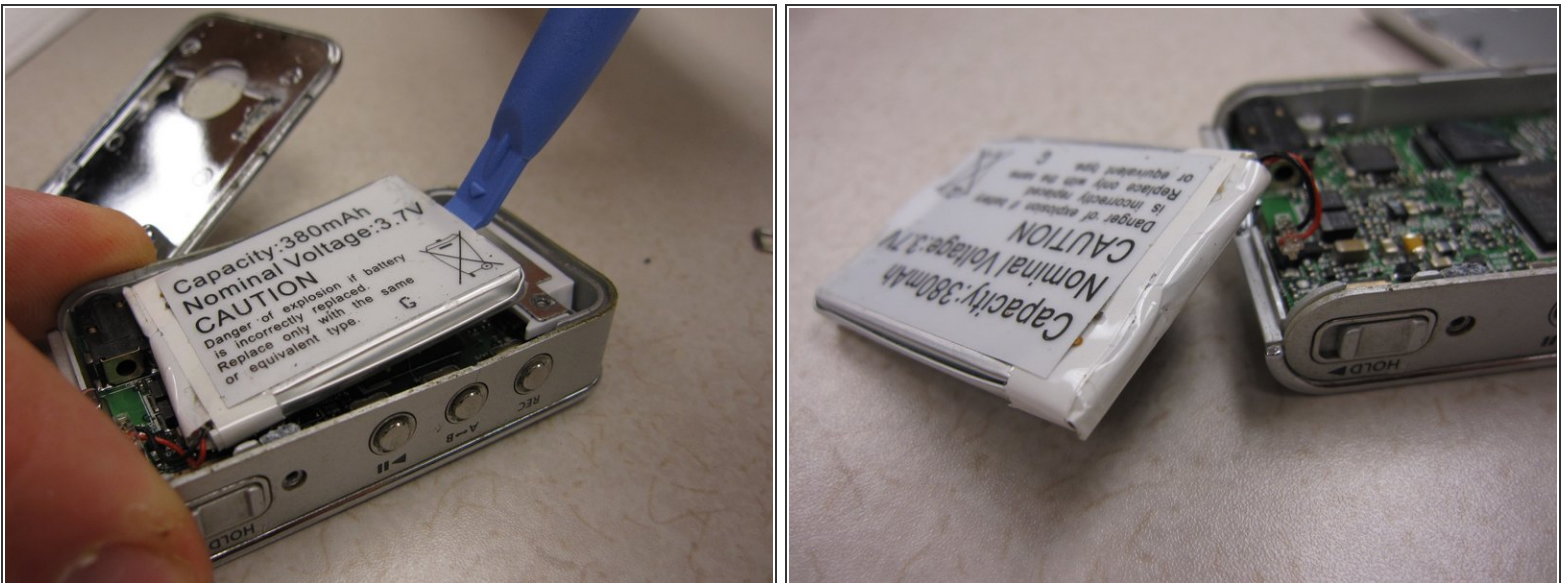
- Remove the screw on each side of the device using a Phillips head screwdriver.

## Step 3



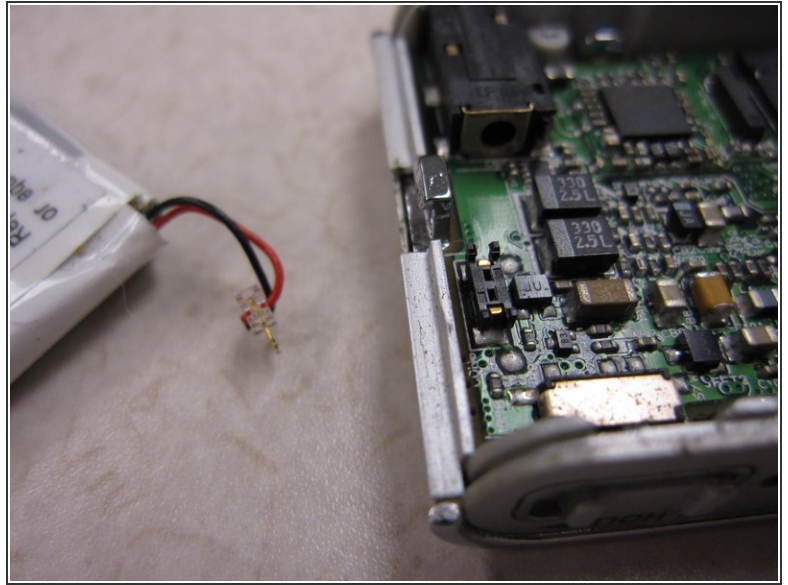
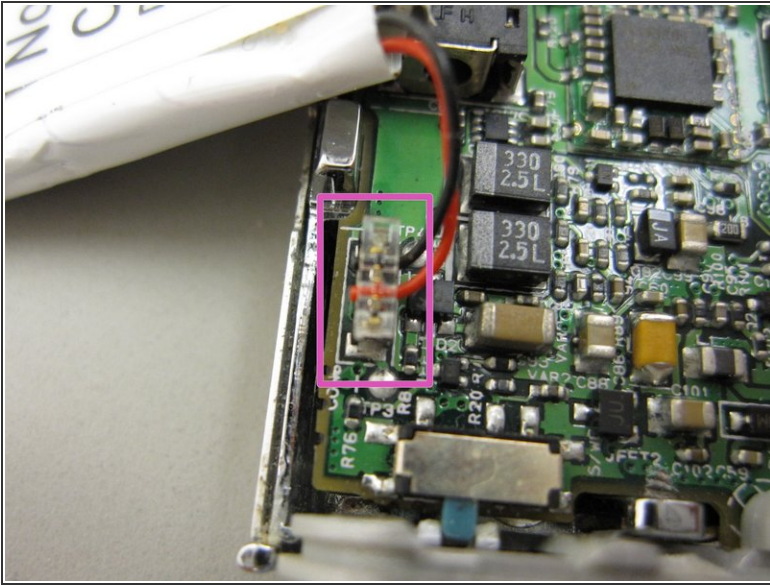
- Using the plastic opening kit, place the prying end of the kit into the opening created by removing the screws.
- Gently pry open the back cover. Insert the plastic opening tool in between the cover joints.

## Step 4 — The Battery



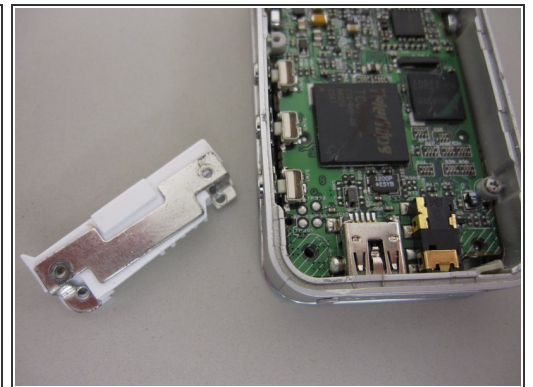
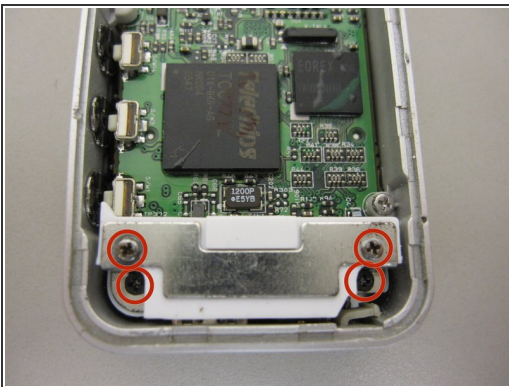
- Once the back cover has been removed the battery will be visible.
- Pry the battery from the device.
- ⓘ NOTE: The battery should still be connected to the device

## Step 5



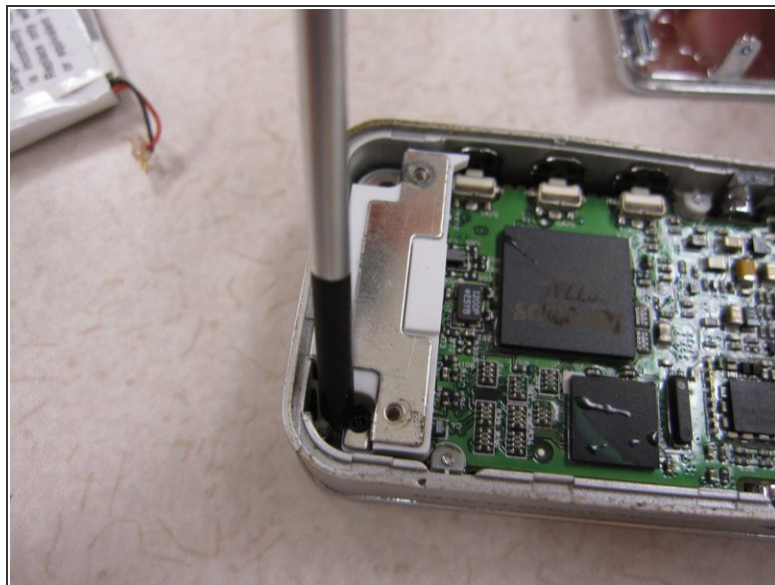
- Unplug the battery connecting cables.
- ⓘ NOTE: The battery now should be free from all connections to the device.

## Step 6 — Disassembling Samsung TFT Color YP-T7J USB Connector Dock



- Once the battery has been removed you can see the motherboard.
- Unscrew 4 screws on the metal dock using a Phillips head screw driver.
- The USB connector can now be taken off of the device.

## Step 7 — The Front Cover



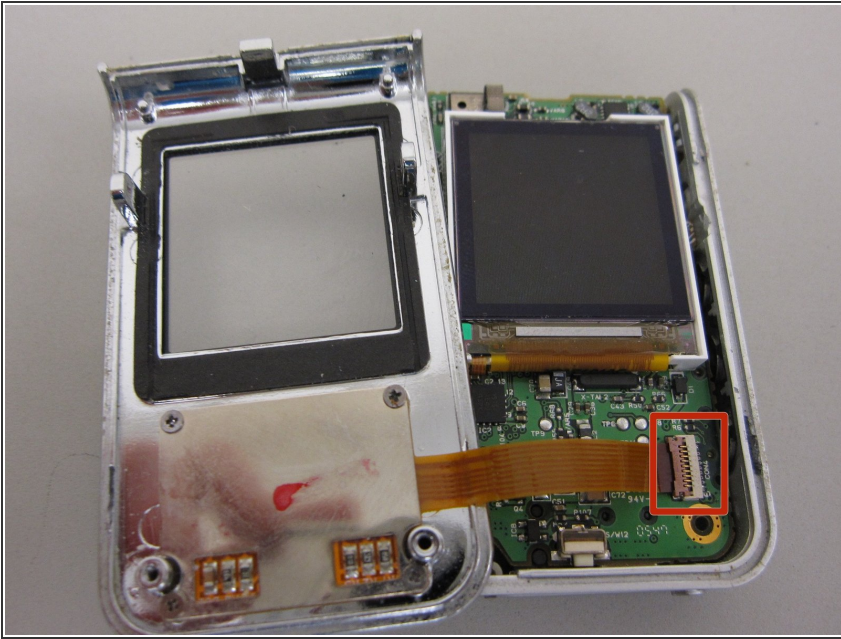
- Using the philips screwdriver, remove the two screws on the mother board.

## Step 8



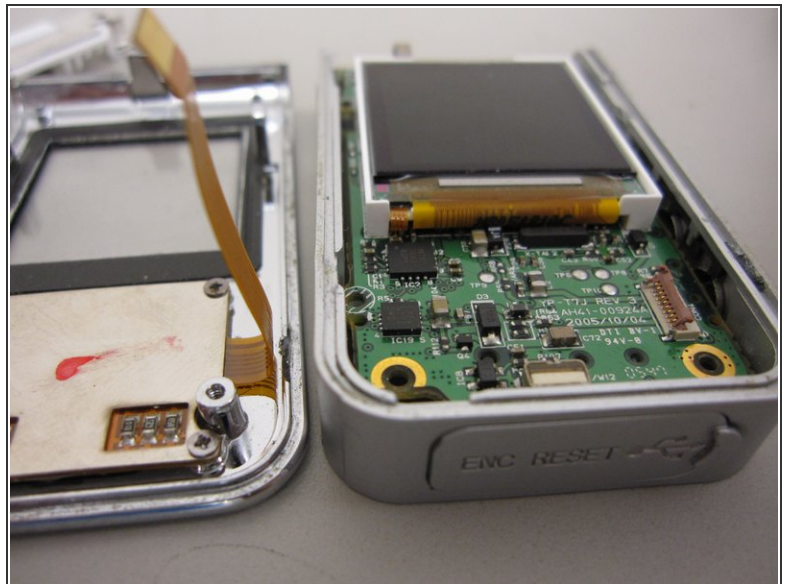
- Place the pry tool in-between the front cover and mother board.
- Gently separate the front cover.

## Step 9



- After opening the front cover you will see and electric ribbon connecting the buttons to the mother board.

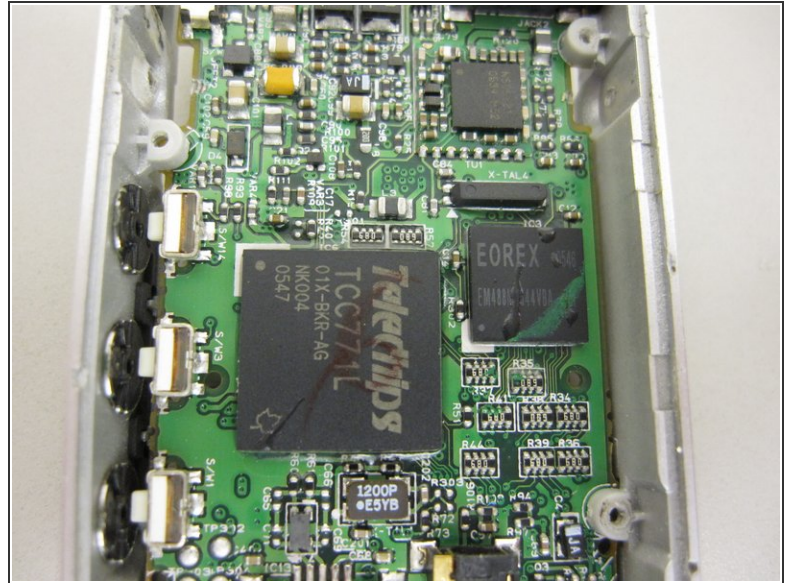
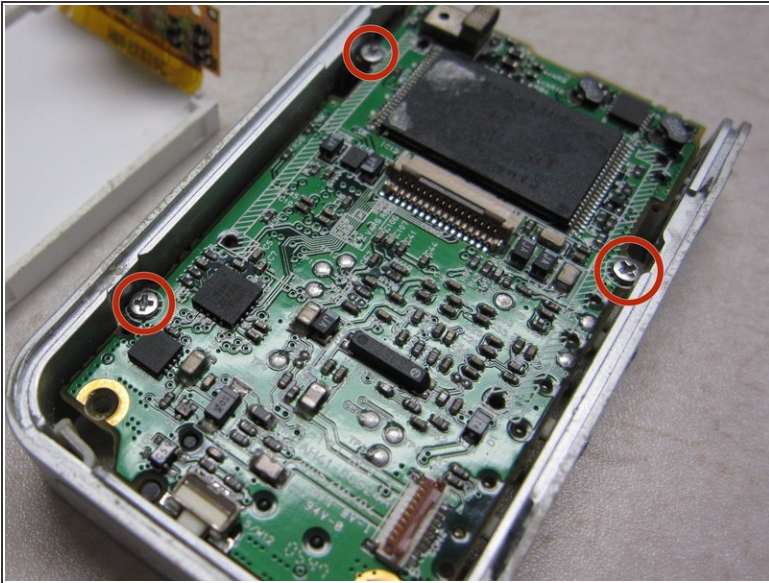
## Step 10



**⚠ CAUTION:** Do not rip the electric ribbon from the mother board.

- Carefully flip up the plastic lip that holds the electric ribbon to the board.

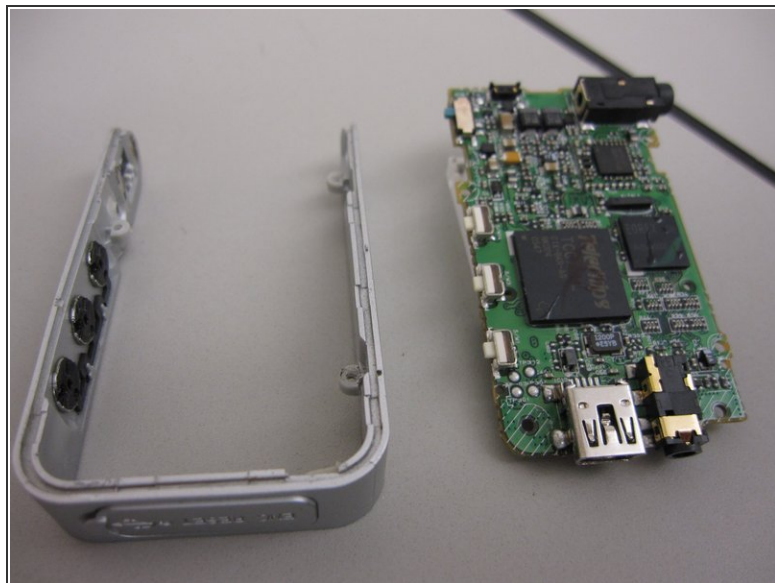
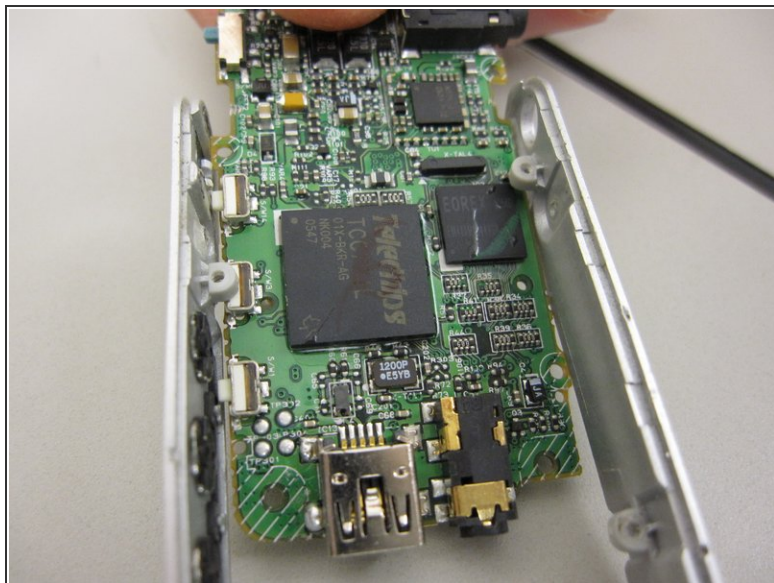
## Step 11 — Motherboard



- Remove the 3 screws located around the motherboard. 2 screws are located on the left side and 1 screw is located on the right side.

**i NOTE:** The orientation of the second picture is screen side down!

## Step 12



- The motherboard should be loose from the middle casing.
- Gently pull the motherboard away from the middle casing
- The device should now be in multiple parts.

To reassemble your device, follow these instructions in reverse order.