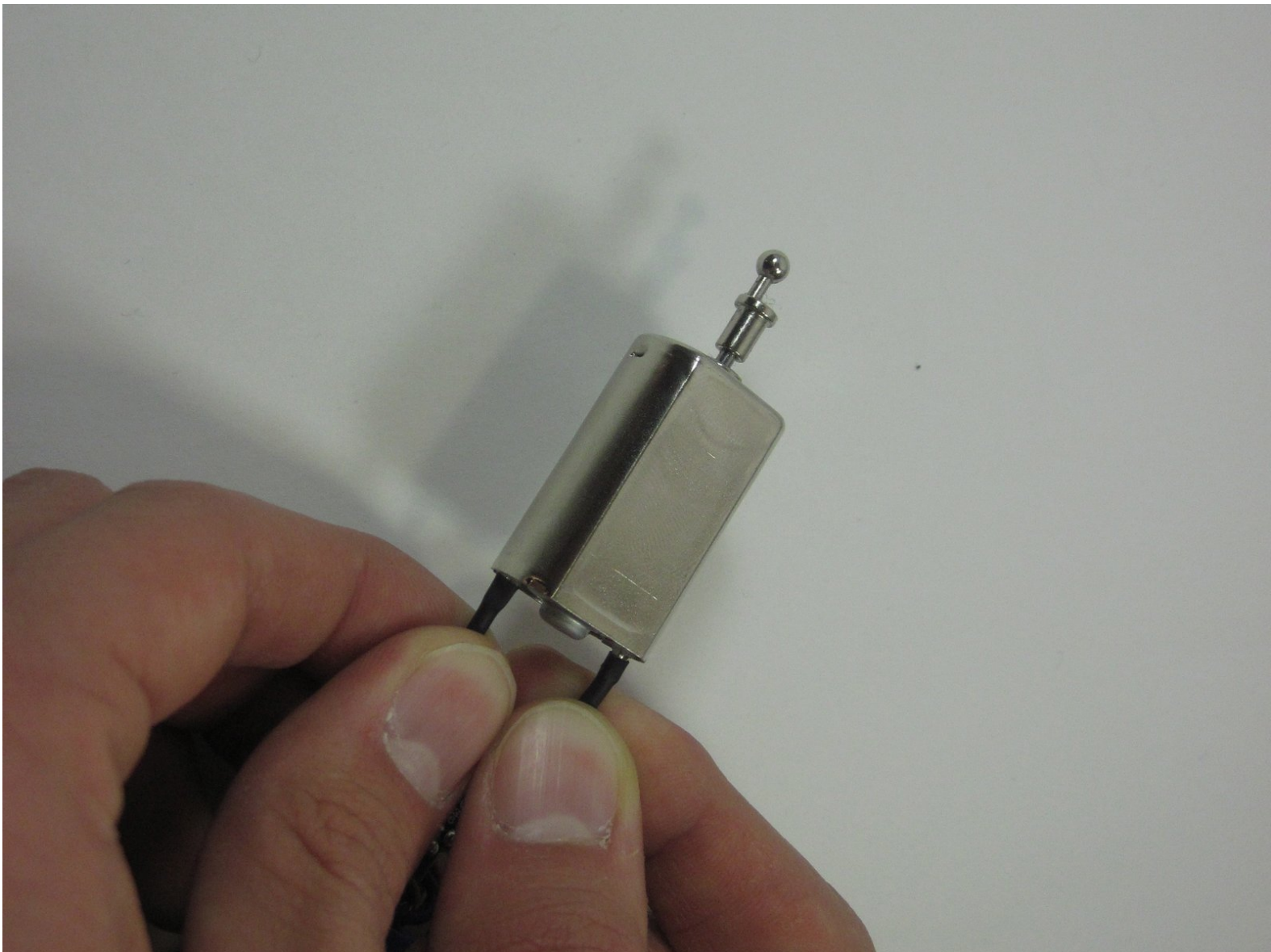




Wahl Lithium Ion Trimmer Electric Motor Replacement

Motors don't last forever and could break down or experience a mechanical failure. Just replacing the entire piece and re-wiring some simple connections would fix the device.

Written By: nathan

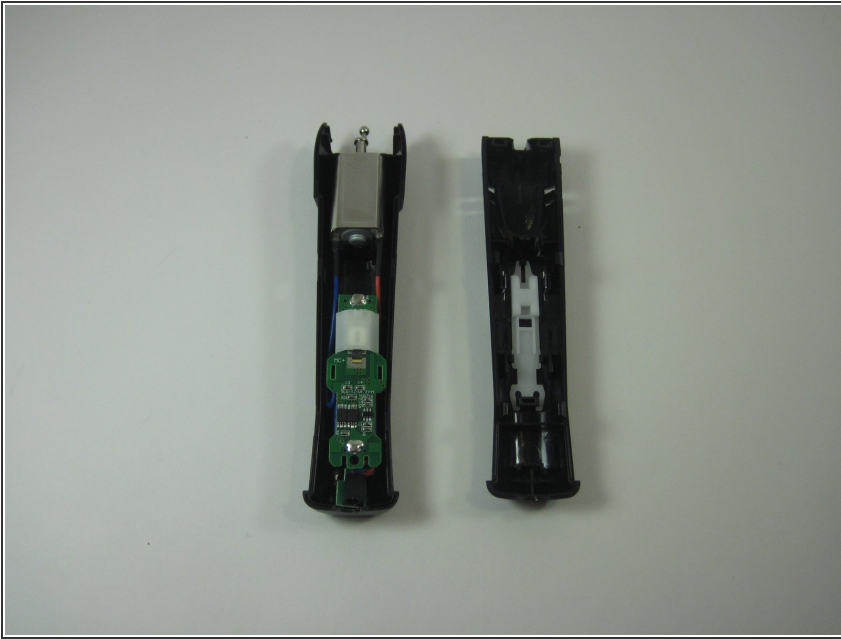




PARTS:

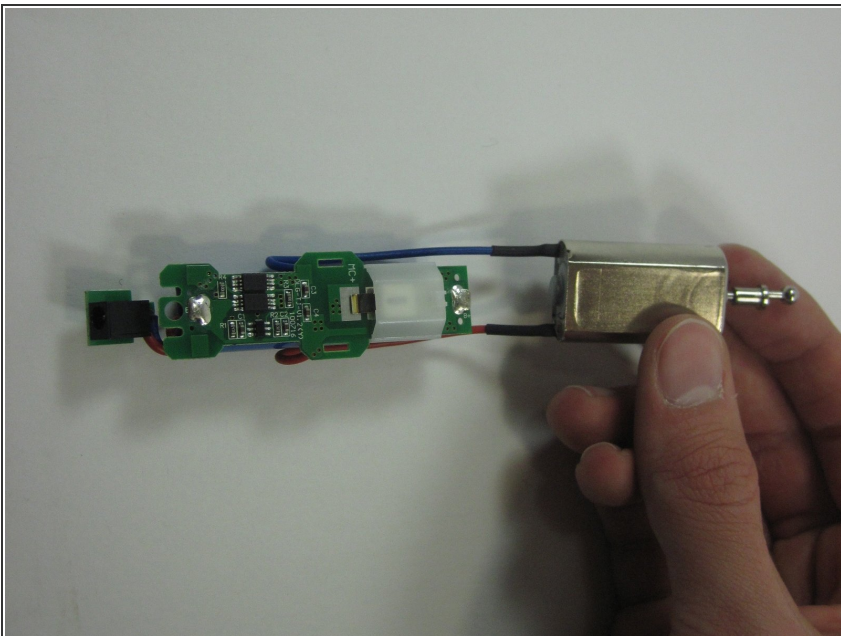
- [New motor](#) (1)
-

Step 1 — Electric Motor



- Refer to the 4th step in disassemble process to begin replacement of motor.

Step 2



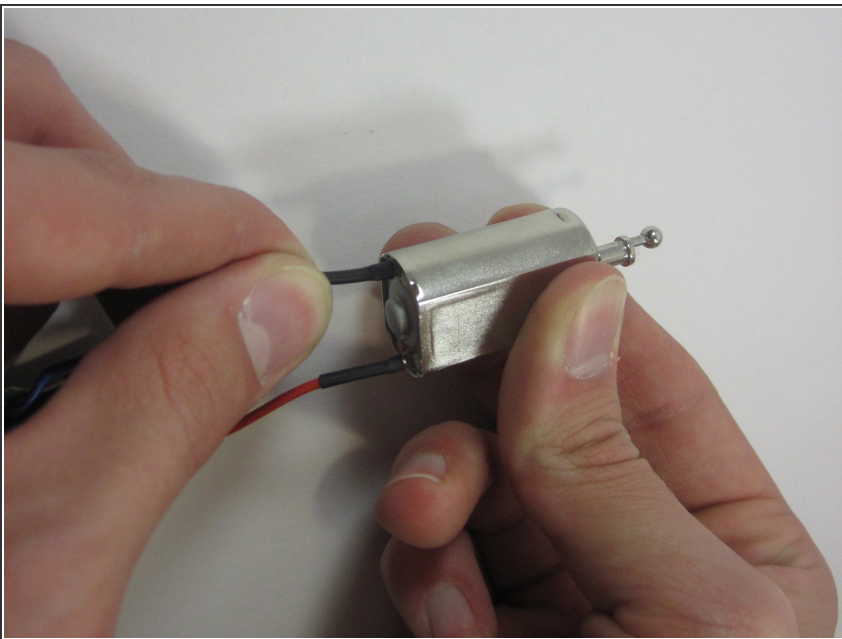
- Remove the chip set, battery and motor as one piece.

Step 3



- In this step focus on the motor, ignoring the chip set and battery. Here you will be able to remove the motor from the wires.

Step 4



- After the wires are removed and the motor is detached use the replacement motor you purchased and reconnect the wires.

To reassemble your device, follow these instructions in reverse order.