



Sony Radio Model CFD S05 Prerequisite steps Replacement

The first few steps of some of the replacement guides.

Written By: Ian Nussman

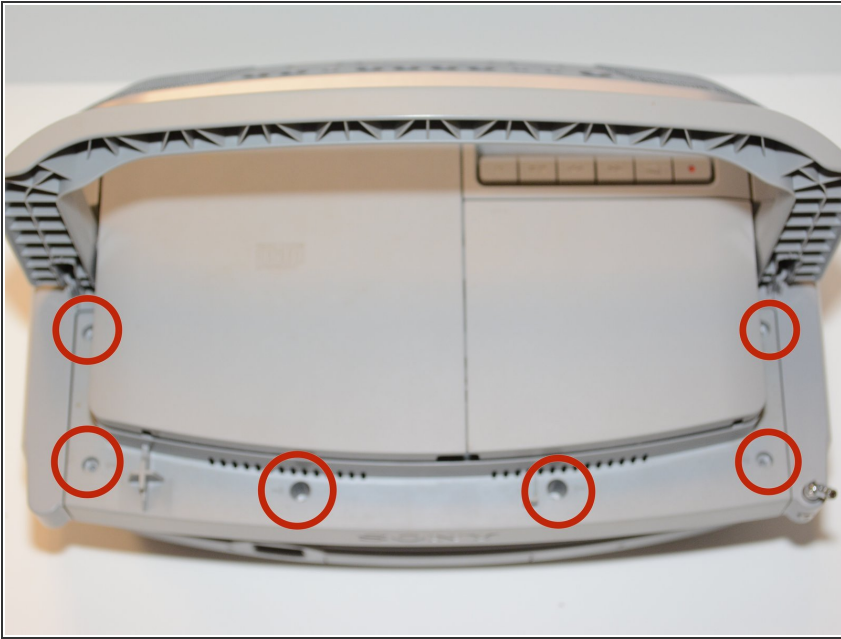




TOOLS:

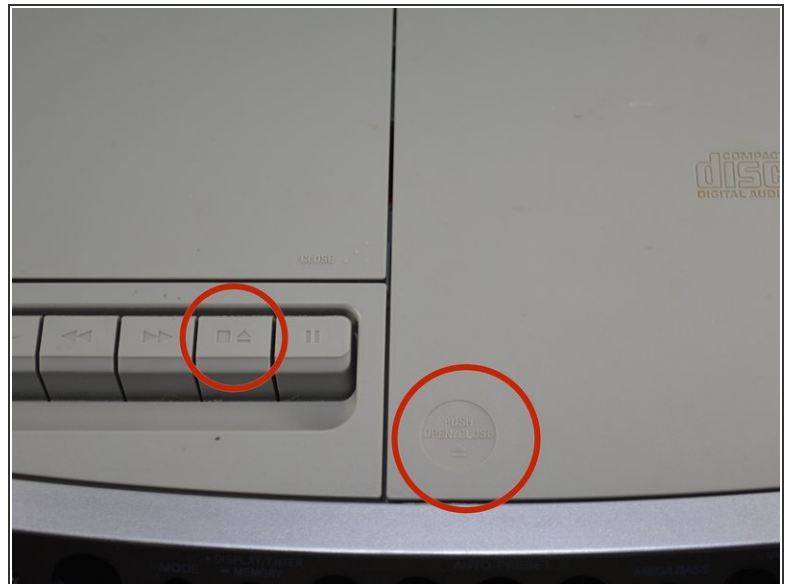
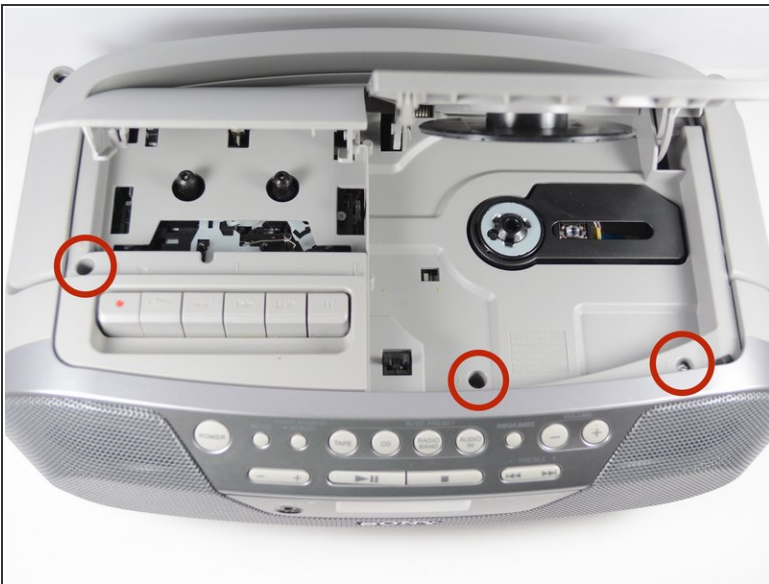
- [Pro Tech Toolkit](#) (1)
-

Step 1 — Sony Radio Model CFD S05 Prerequisite steps Replacement



- Unscrew the screws on the top of the radio.

Step 2



- Open the CD and cassette doors and remove the screws in the compartments.
- ⓘ To open the CD door push on the bottom left corner of the CD door. To open the cassette door push the button that is to the left of the pause button.

Step 3



- Flip the radio upside down and remove the battery cover. Unscrew the one screw below the batteries.

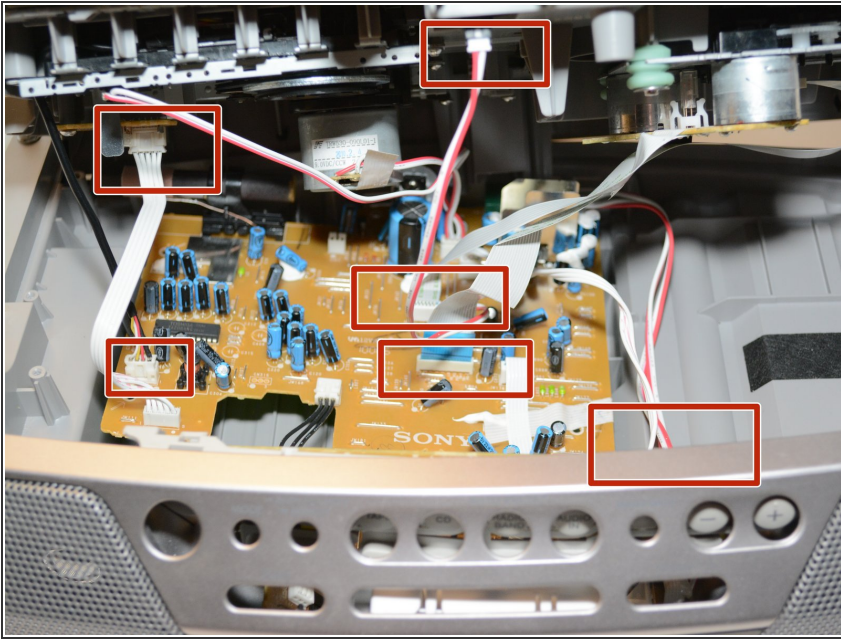
Step 4



- Remove the top of the radio enough to access the wires for removal.

⚠ Do not forcefully remove the whole top piece of the radio! There will be wires connected to the top cover and circuit board.

Step 5



- Remove all of the wires that are connected to both the circuit board and the underside of the top of the radio by pulling them where they are connected
- ⓘ This should include three sets of red and white wires, one set of white wires, one set of black wires, and two ribbon wires. Some cannot be disconnected from the top piece of the radio. Disconnect these plugs from the circuit board.