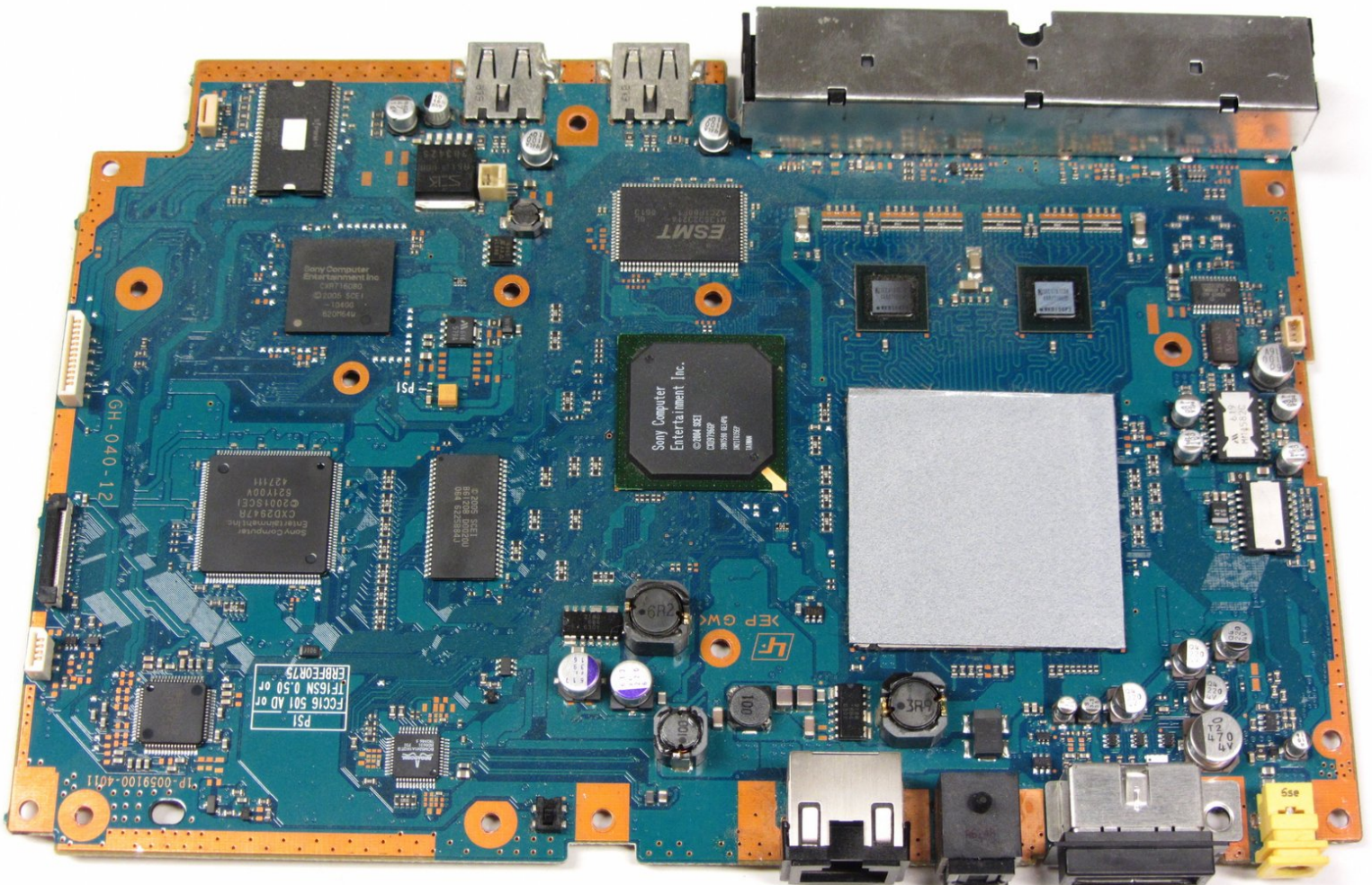




PlayStation 2 Slimline Motherboard Replacement

This guide will show you how to locate and replace the Motherboard in the PlayStation 2 Slimline.

Written By: Thomas Sullivan

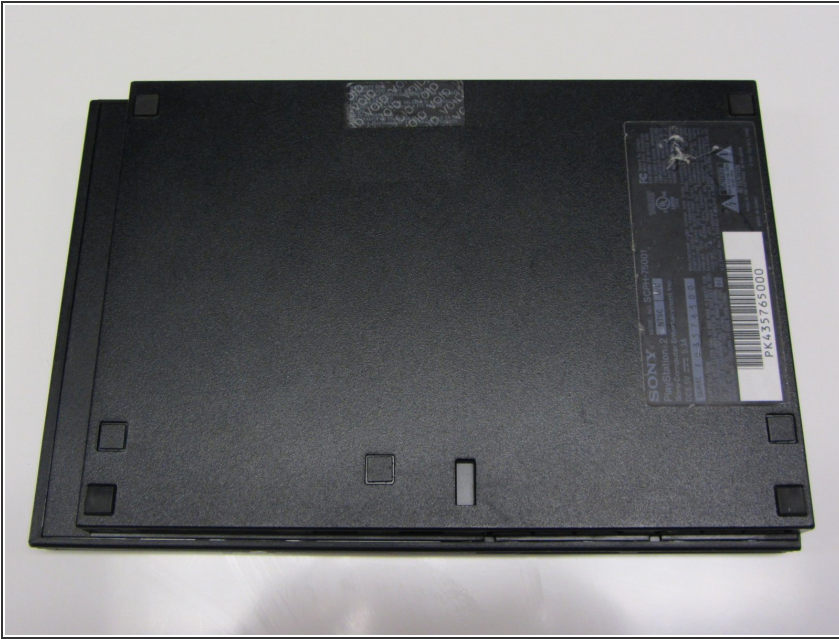




TOOLS:

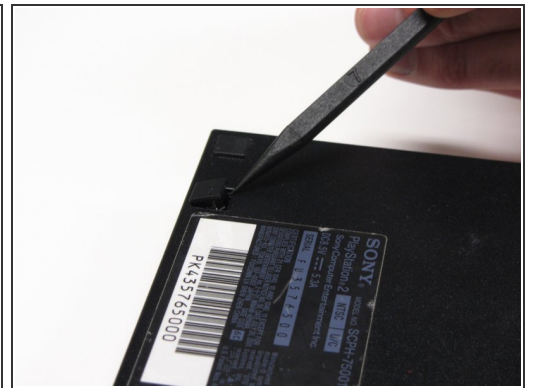
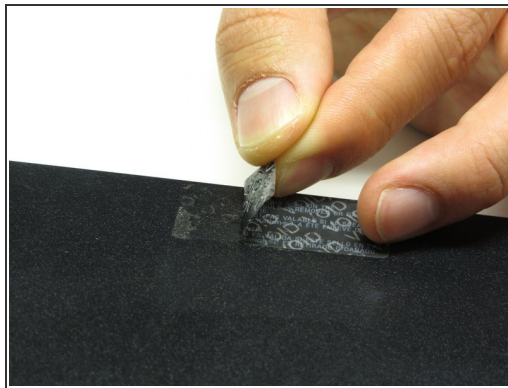
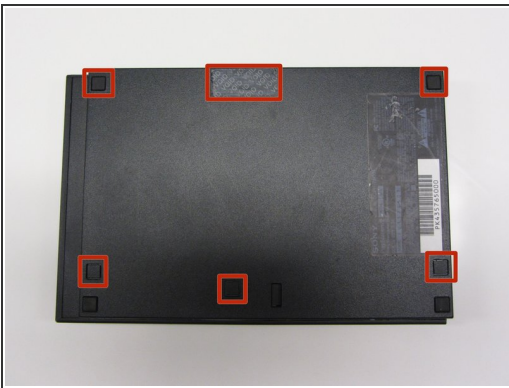
- [Phillips #1 Screwdriver](#) (1)
 - [Spudger](#) (1)
 - [Tweezers](#) (1)
-

Step 1 — Outer Shell



- Disconnect all cables from the console and flip the unit over to reveal its base.

Step 2



- Locate the 6 feet on the base of the unit. Pry them off using a spudger to reveal the screws.
- ⓘ Note: One of the feet is located under the sticker shown in the photo. Removing this sticker will void any warranty with Sony.

Step 3




- Remove all six 4.0 mm screws from the base of the unit using a #1 Phillips screwdriver.

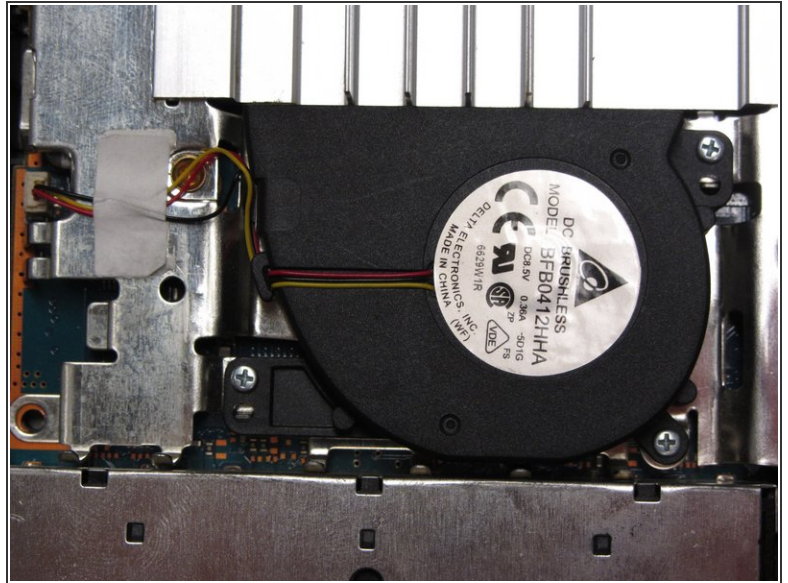
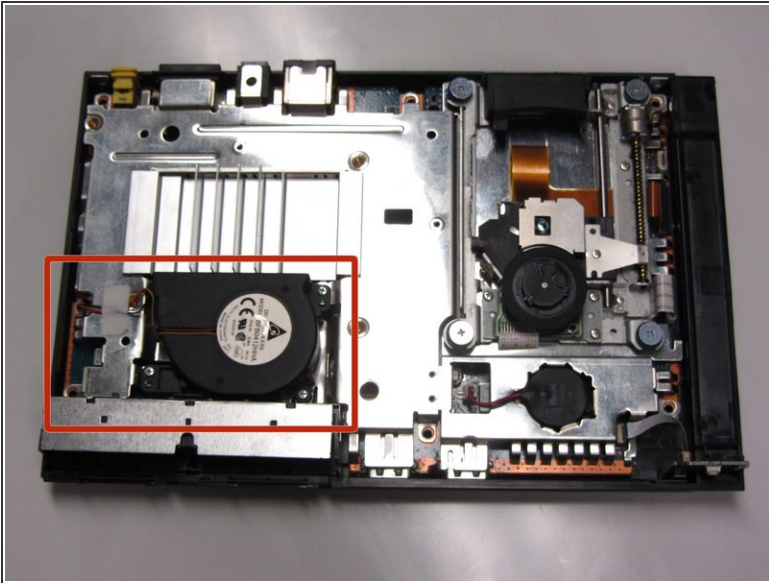
Step 4



- Starting at the corner at which the power and Ethernet ports are located, pry open the outer shell using a spudger and continue around the entire unit.

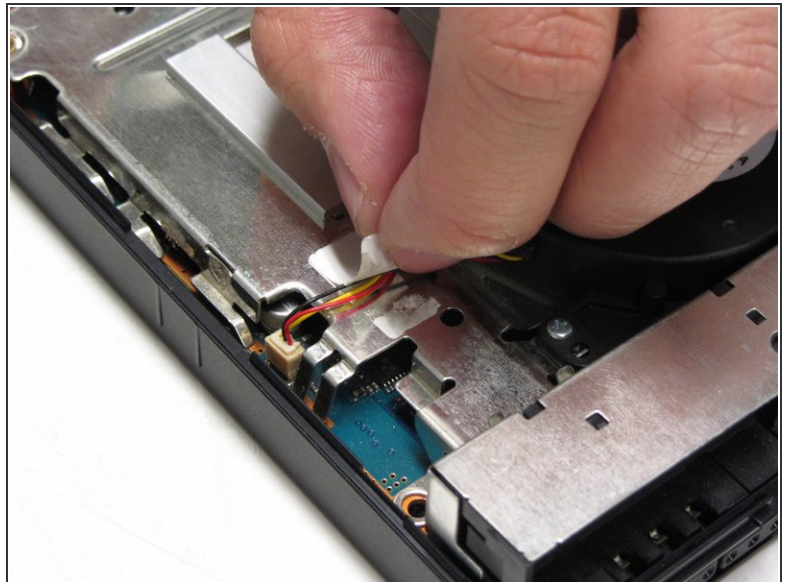
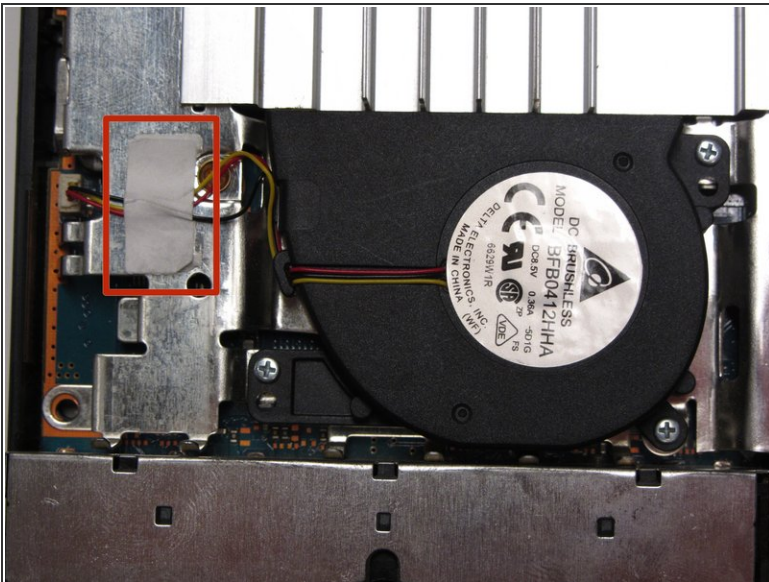
 Note: You may use your hands for additional force to separate the two pieces of the outer shell.

Step 5 — Fan



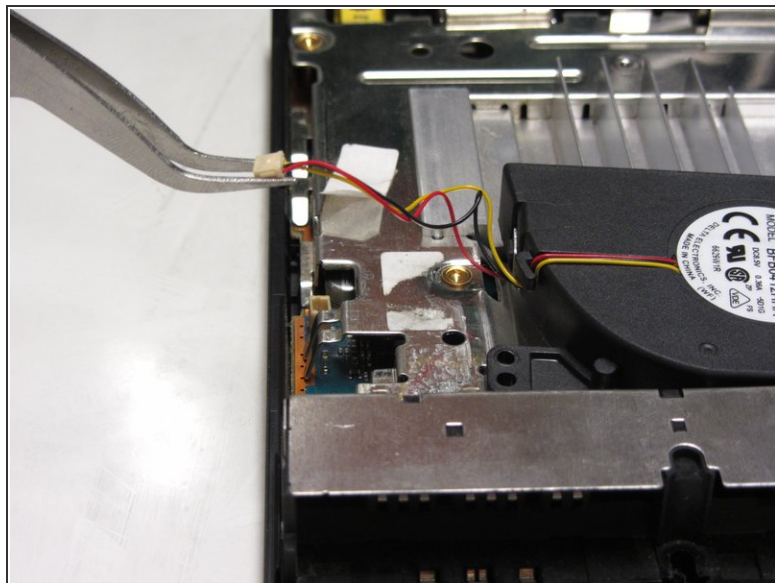
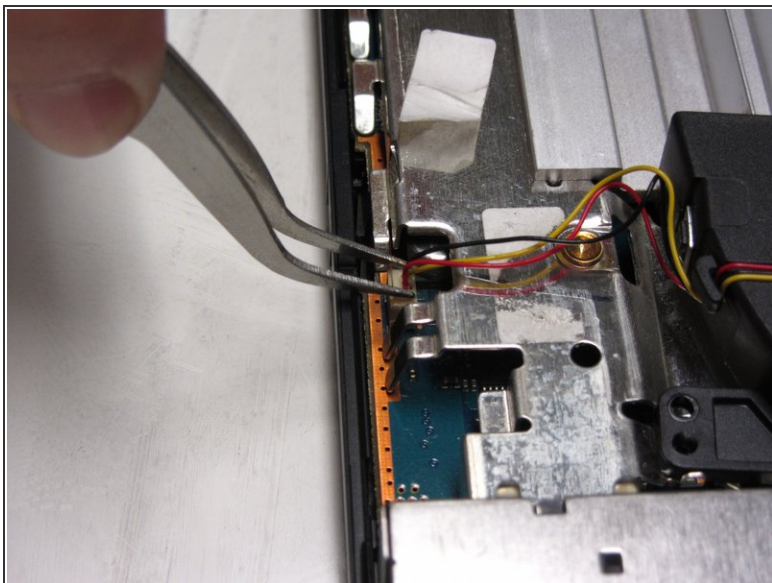
- Locate the fan at the front, left section of the unit.

Step 6



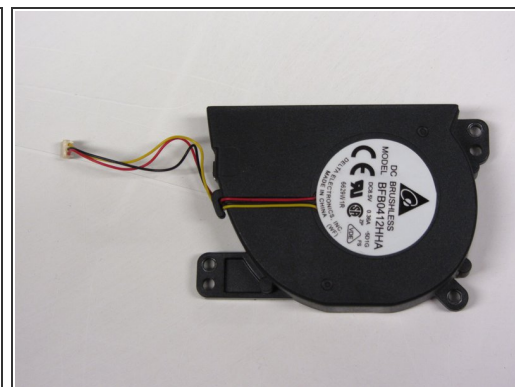
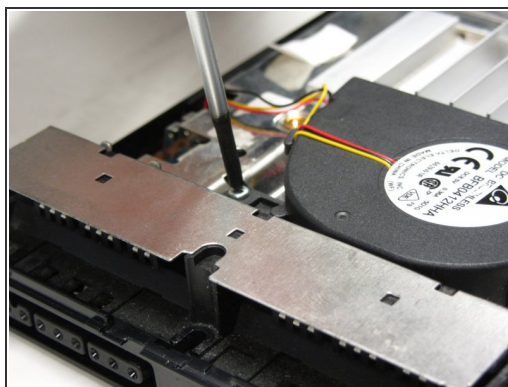
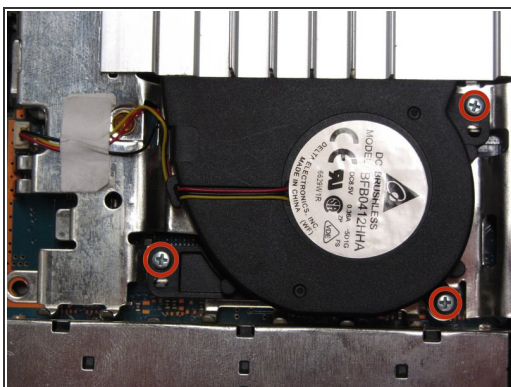
- Peel off the sticker holding the power cords to the unit.

Step 7



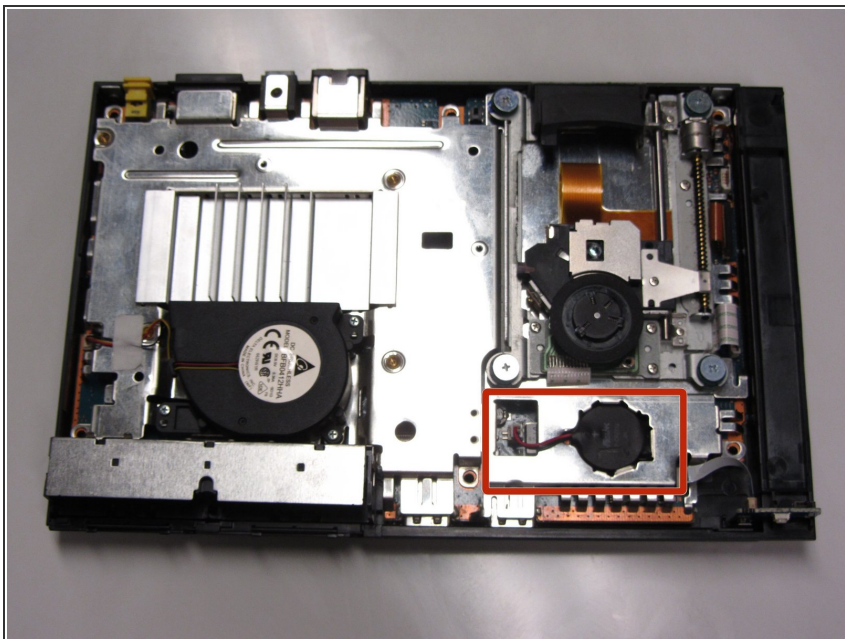
- Lift the connector from the motherboard with a pair of tweezers using a firm, upward force.

Step 8



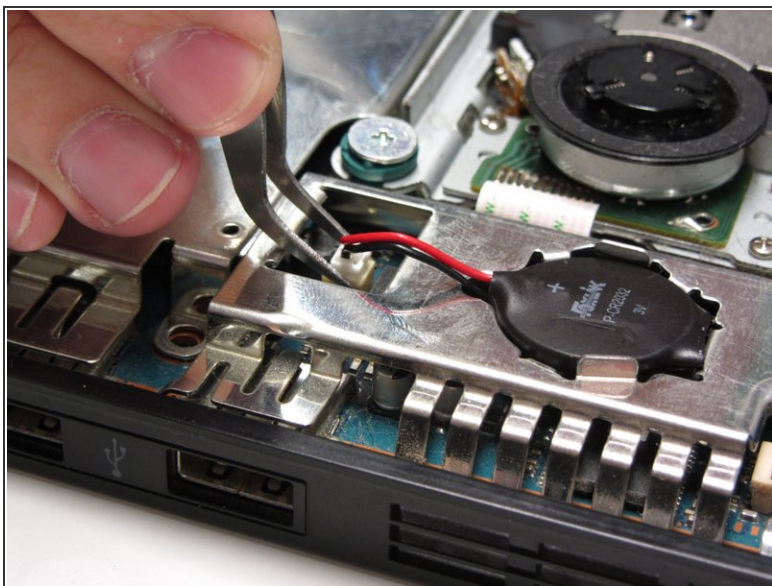
- Remove all three 1.6 mm screws fastening the fan to the unit using a #1 Phillips screwdriver.
- Gently lift and remove the fan from its compartment.

Step 9 — Clock Battery



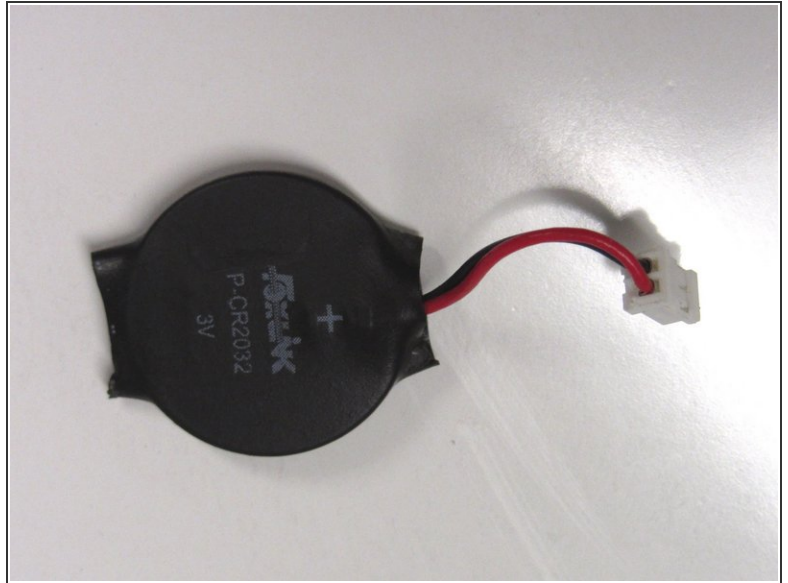
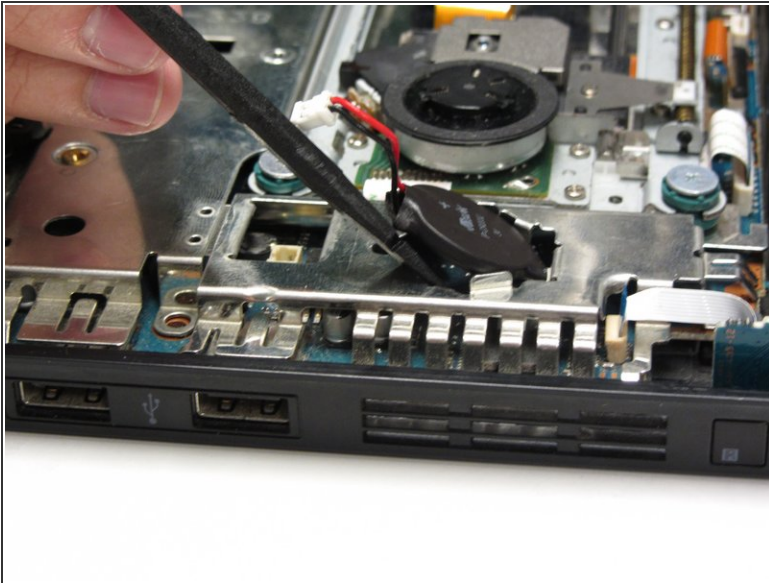
- Locate the clock battery at the front, right section of the unit. The battery has a circular shape with red (+) and black (-) wires connecting to the motherboard.

Step 10



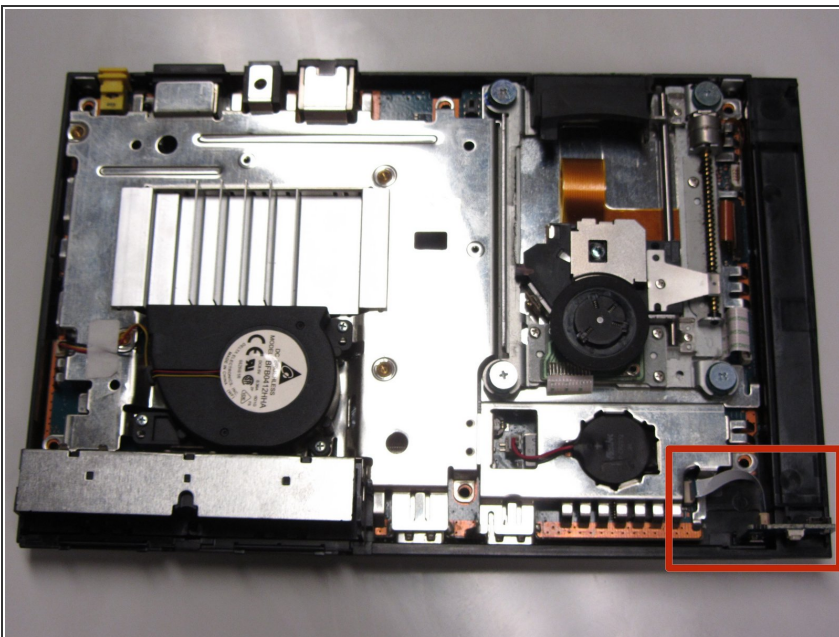
- Lift the connector from the motherboard with a pair of tweezers using a firm, upward force.

Step 11



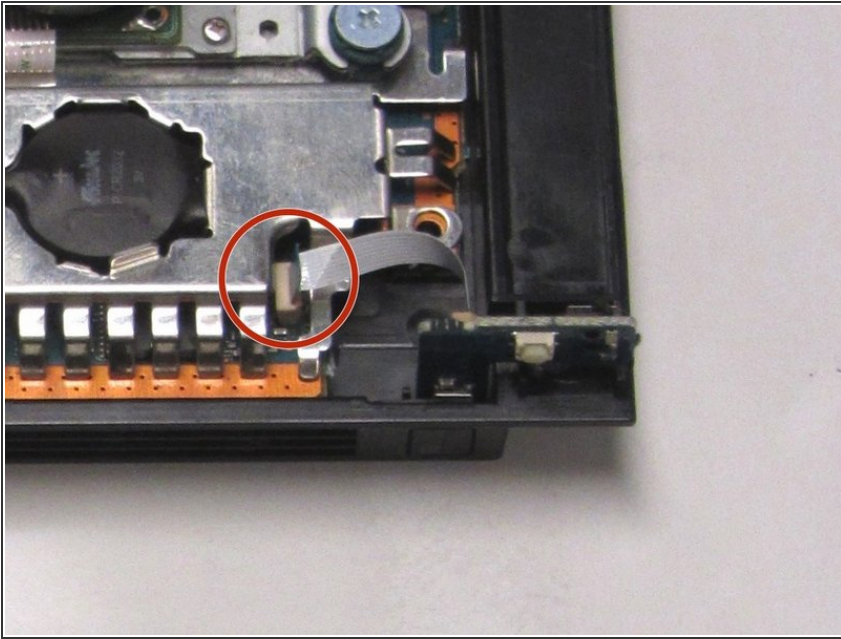
- Gently lift and remove the battery from its compartment using a spudger.

Step 12 — IR Sensor



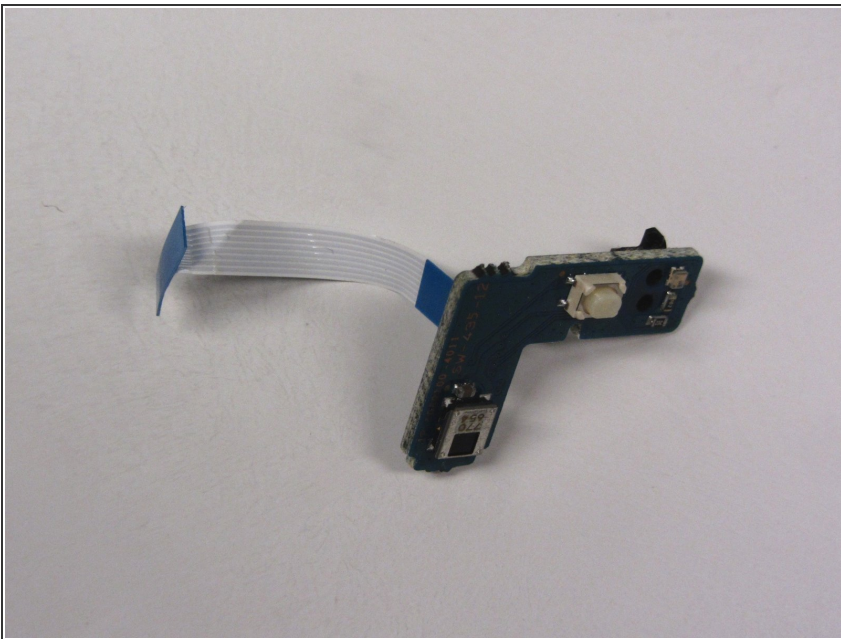
- Locate the IR sensor at the front, right corner of the unit.

Step 13



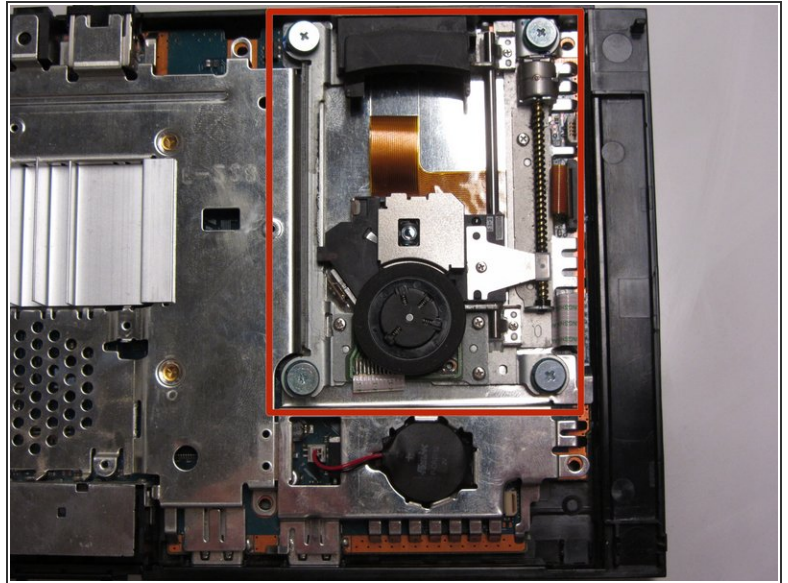
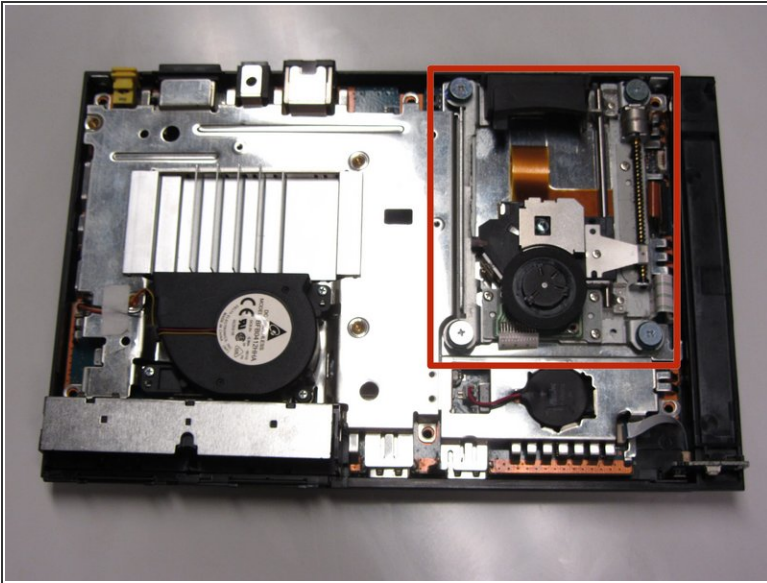
- Gently detach the ribbon cable connecting the IR sensor to the motherboard.
- Caution: Always remove ribbon cables by the plastic handles located on either end. Gripping a ribbon cable anywhere but the provided handles can damage the cable and render the component useless.

Step 14



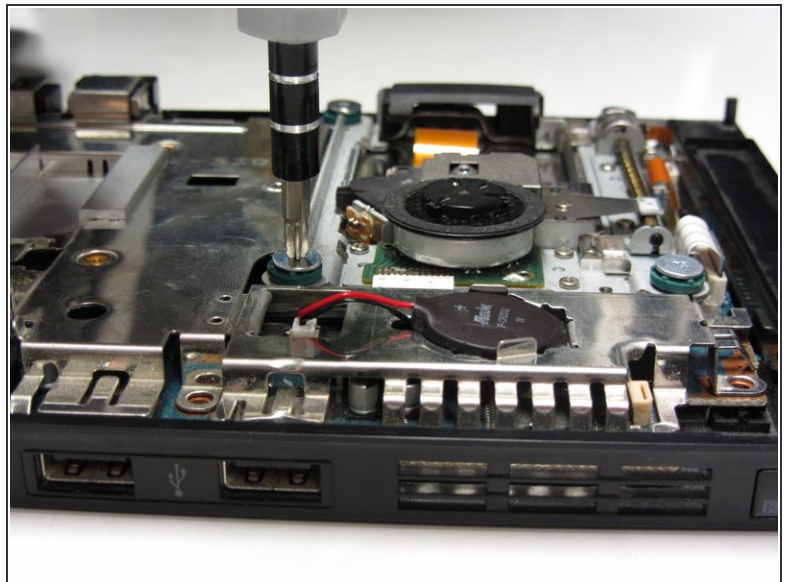
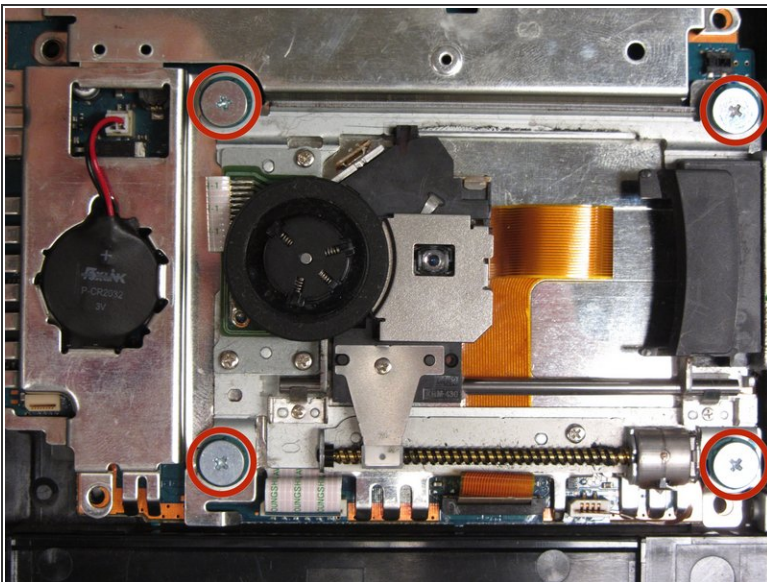
- Gently lift and remove the IR Sensor from its designated slot.

Step 15 — Optical Drive



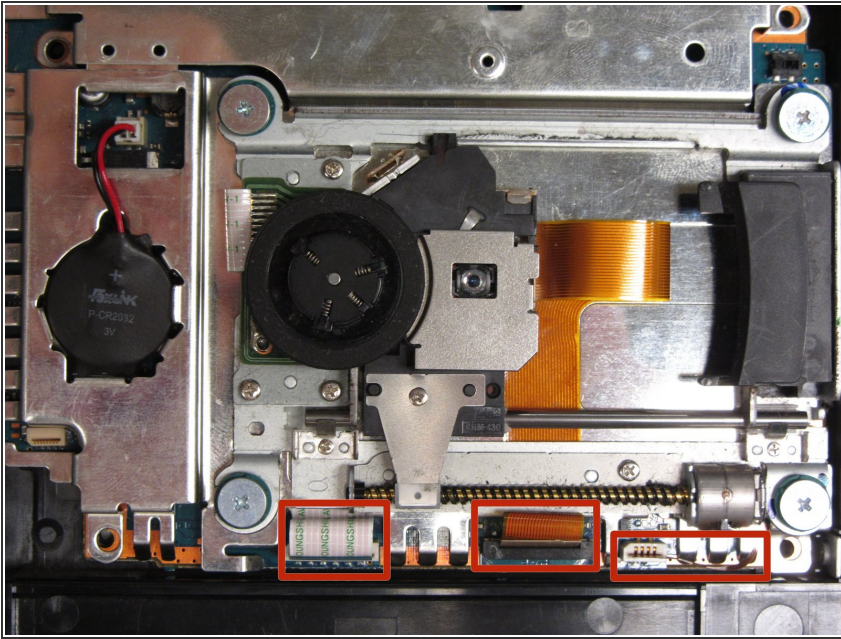
- Locate the optical drive which occupies most of the space on the right side of the unit. It can be identified by the four screws with wide-diameter heads fastening the optical drive to the motherboard.

Step 16



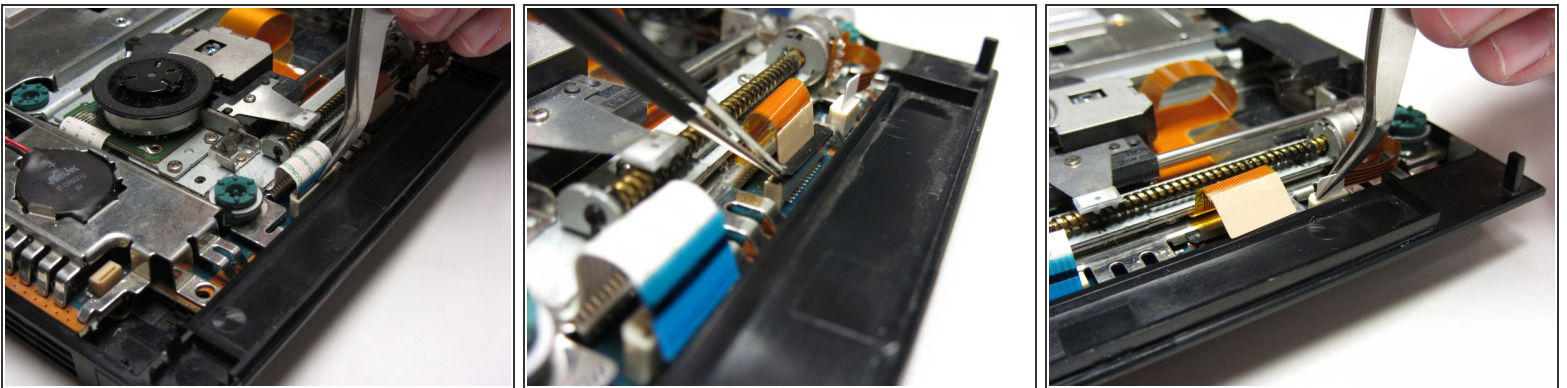
- Remove the four 4.0 mm screws using a #1 Phillips screwdriver.

Step 17



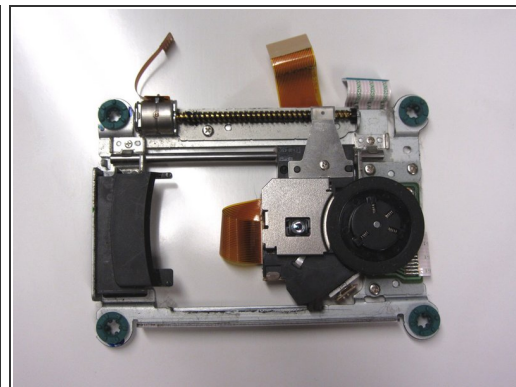
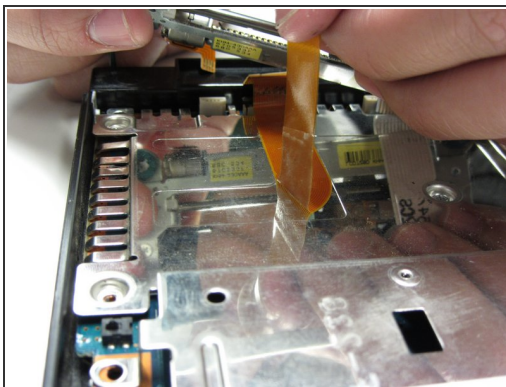
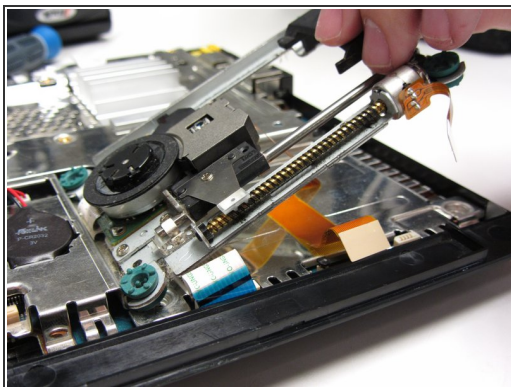
- Locate the three ribbon cables connecting the optical drive to the motherboard.

Step 18



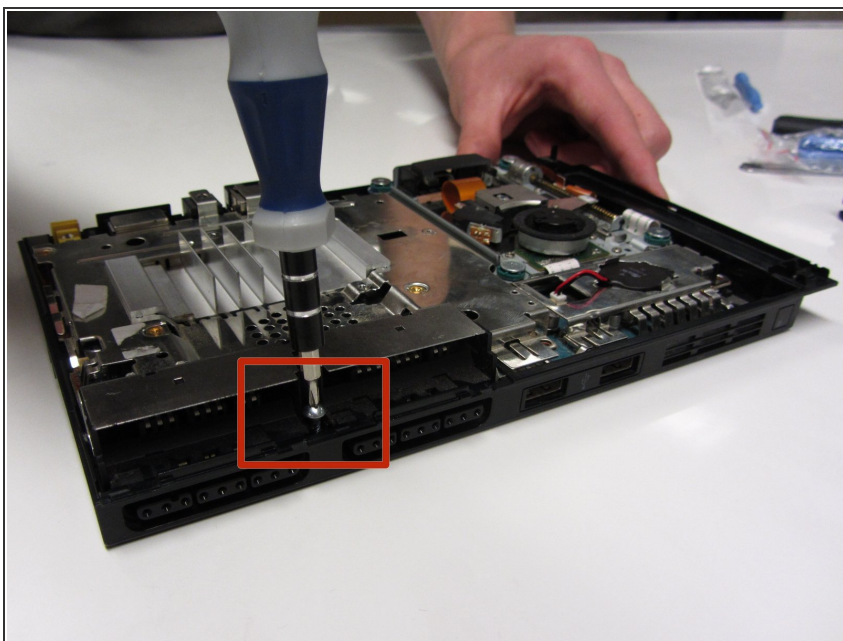
- Gently detach the ribbon cables from the motherboard using a pair of tweezers.
- ⓘ Note: The ribbon cable in the center must be unlocked by lifting up the black tab. Remember to push the tab down upon re-installation to secure the cable.
- ⚠ Caution: Always remove ribbon cables by the plastic handles located on each end. Gripping a ribbon cable anywhere but the provided handles can damage the cable and render the component useless.

Step 19



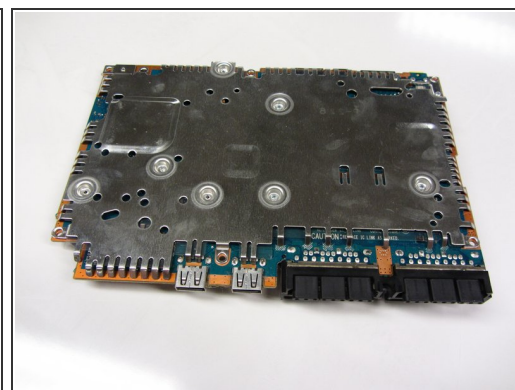
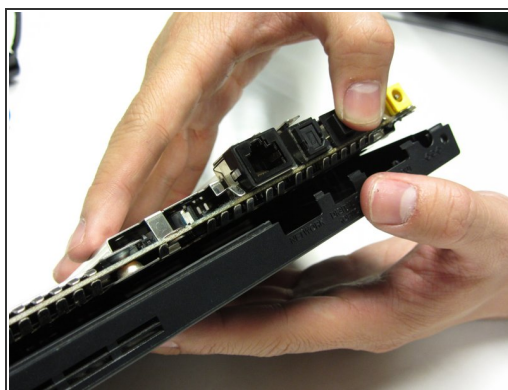
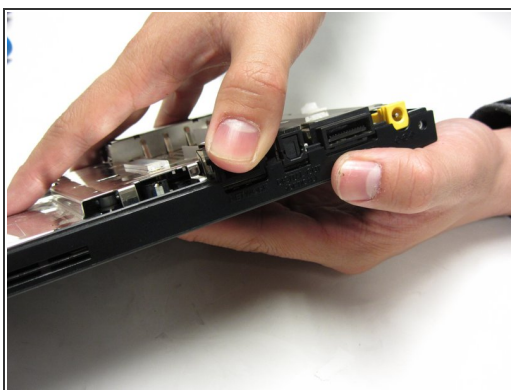
- Remove any tape fastening the cables to the motherboard and gently lift and remove the optical drive.

Step 20 — Motherboard



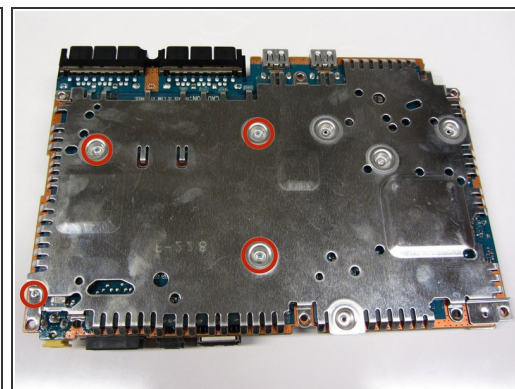
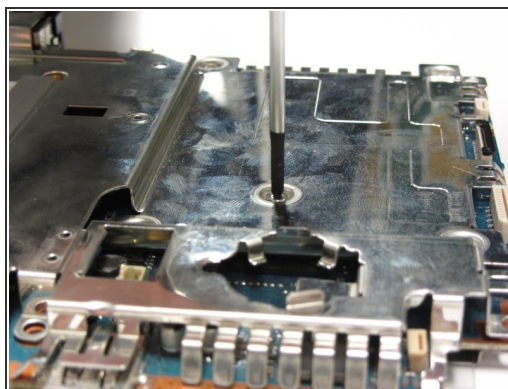
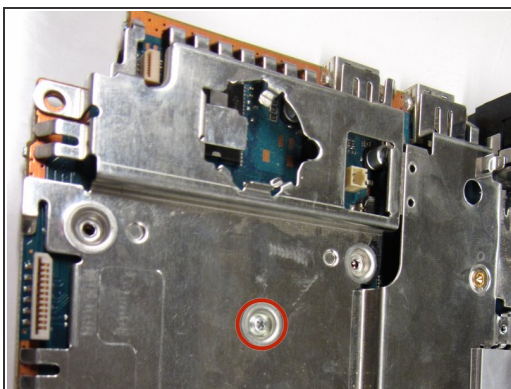
- Remove the 2.4 mm screw located in between the controller ports using a #1 Phillips screwdriver.

Step 21



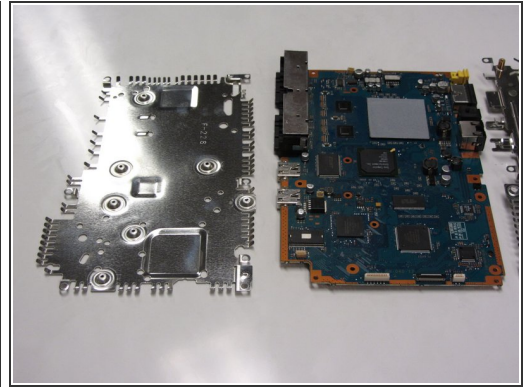
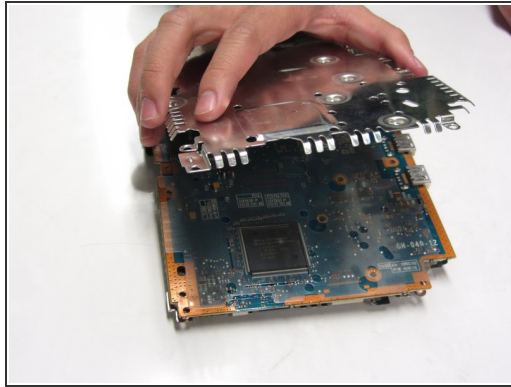
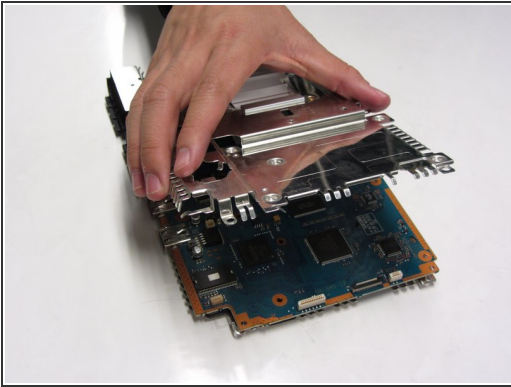
- Gently lift and remove the motherboard and chassis from the outer shell.

Step 22



- There are a total of five 1.6 mm screws which mount the metal chassis to the motherboard.
- Remove the screw on top and the four screws on the bottom with a #1 Phillips screwdriver.

Step 23



- Gently separate the two metal plates from the motherboard.

To reassemble your device, follow these instructions in reverse order.