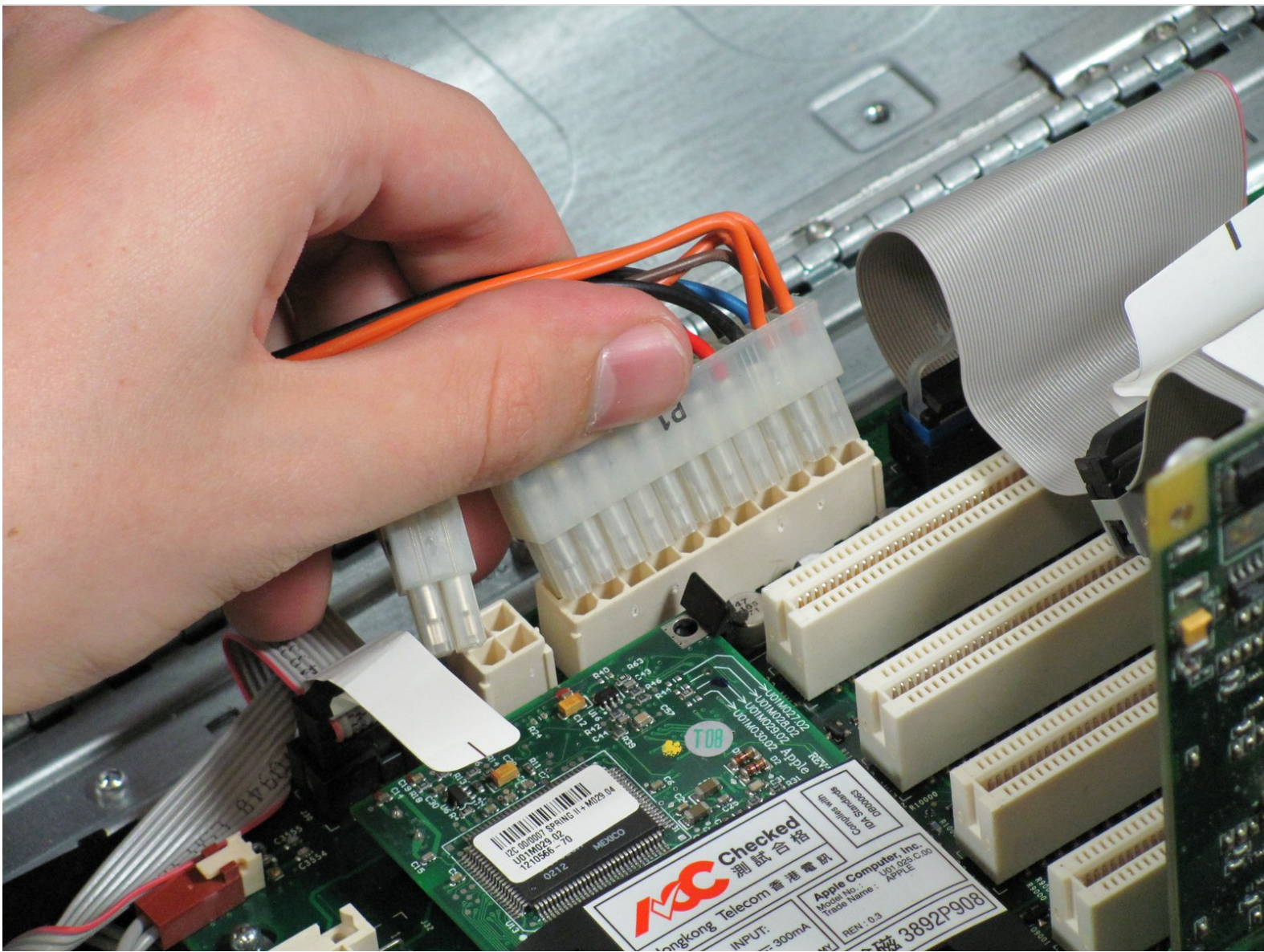




# Power Mac G4 Quicksilver Logic Board Replacement

Be sure that you also remove the processor daughter card and the 3 screws that are underneath it. This will let the board slide of perfectly. If you don't remove these you will render the board useless forever!

Written By: Cameron Christensen



---

## INTRODUCTION

Removing the mother board of the Power Mac G4 Quicksilver.



### TOOLS:

- [Phillips #0 Screwdriver](#) (1)
-

## Step 1 — Opening the case



- The handle to open your computer is located on top of the right side panel.

## Step 2



- Grab the circular handle and pull outward.

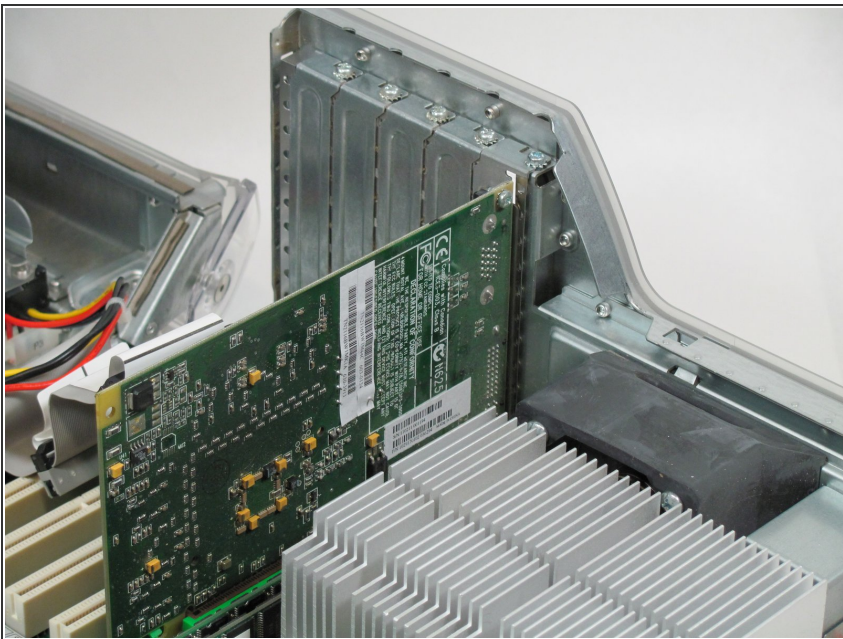


### Step 3



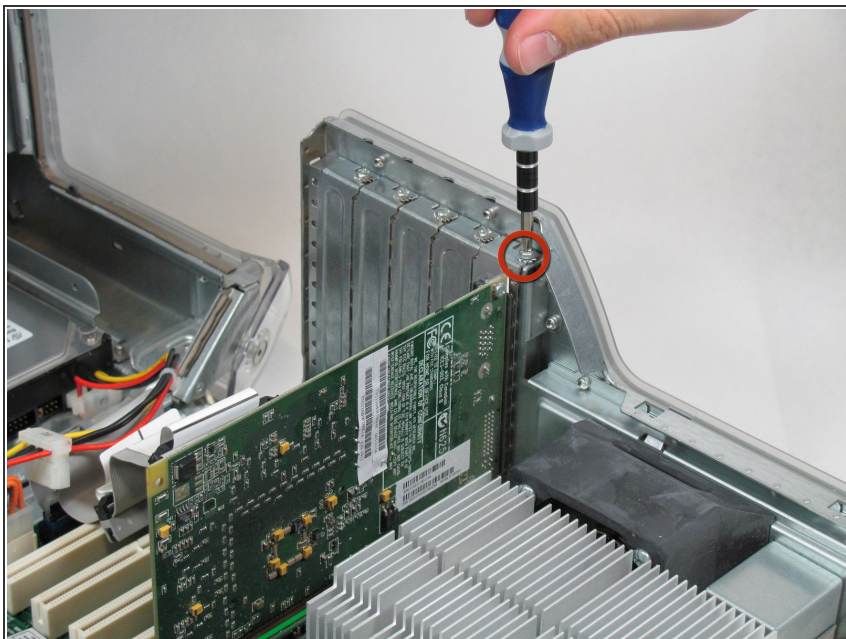
- Your computer is now open and ready for repair.

### Step 4 — Video Adapter



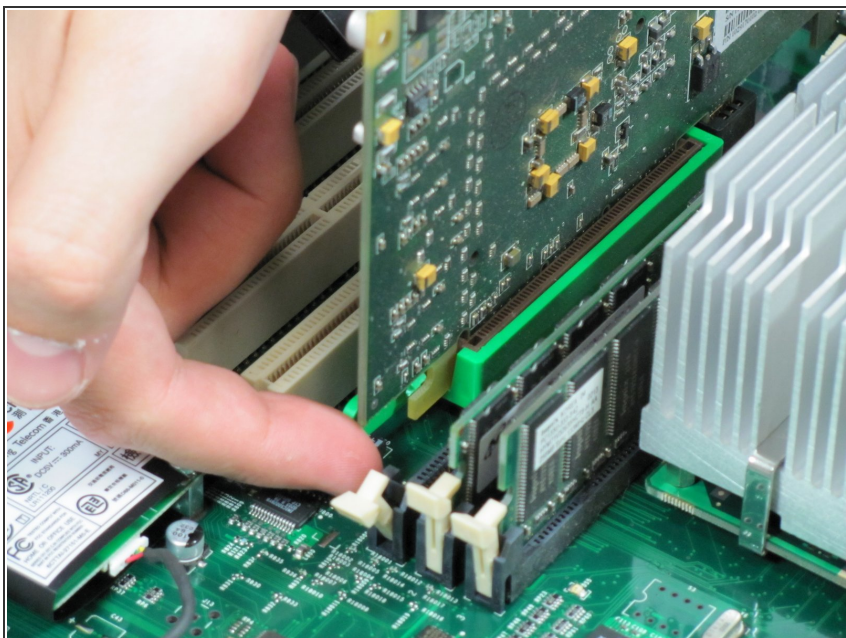
- This is your Power Mac G4's video adapter.

## Step 5



- Start by removing the screw holding the card to the chassis as shown.

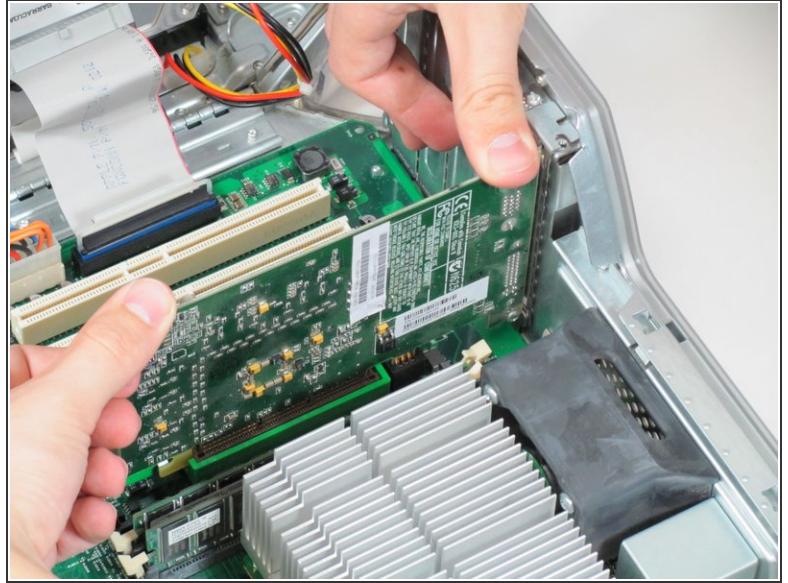
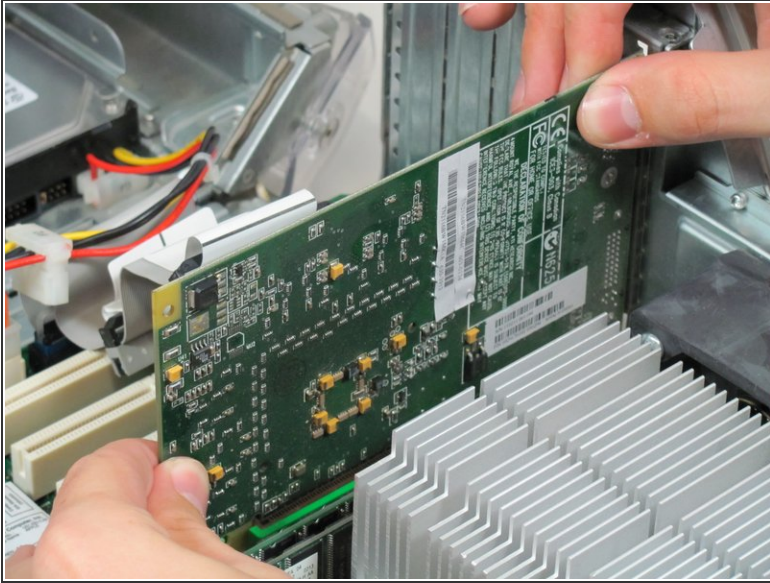
## Step 6



- Before lifting the card out, this small plastic tab needs to be pulled back there by releasing it entirely.



## Step 7



- With the tab and screw removed, lift the card straight out.
- ⓘ When putting the card back in, take care to apply even pressure across the top with your thumbs. This will avoid damaging the card.

## Step 8 — Logic Board



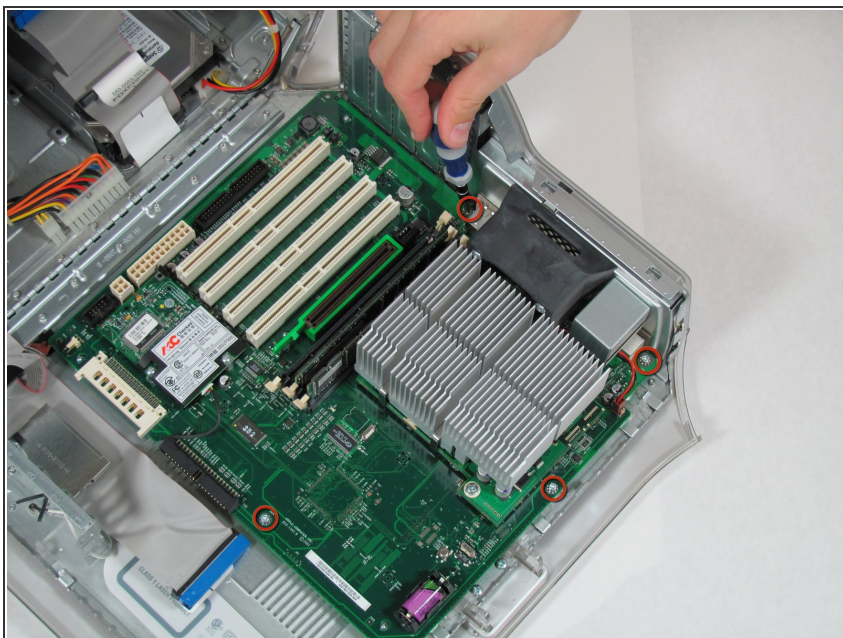
- Disconnect both the power cables and IDE cable from the mother board.

## Step 9



- Remove these three screws that hold the motherboard fan and modem connector to the chassis.

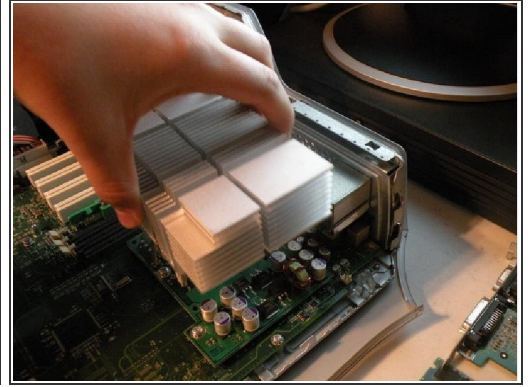
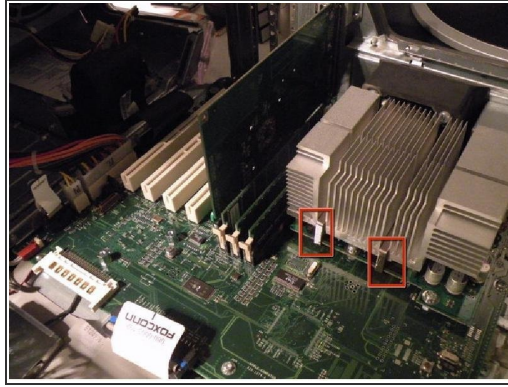
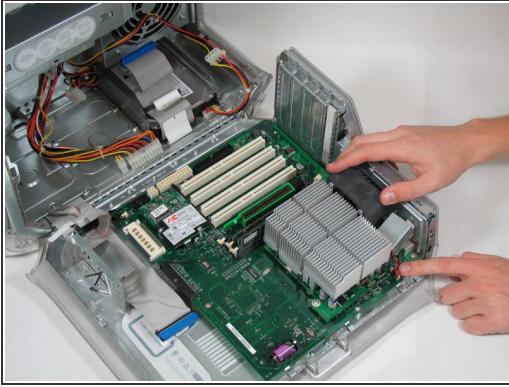
## Step 10



- Remove the four screws shown to free the mother board from the chassis.



## Step 11



- Lift the fan shroud and fan straight up and out. Take care to disconnect the indicated connector
- Remove the heatsink clamps with a flathead screwdriver and do the same for the other side.
- ⚠ Lift off the heatsink and remove the 4 screws of the CPU board.
- There are 4 pins: remove the 3 pins near the RAM but not the pin nearest You.
- You are now ready to slide gently (and without ANY difficult) the motherboard. Lift up and the game is done.

To reassemble your device, follow these instructions in reverse order.