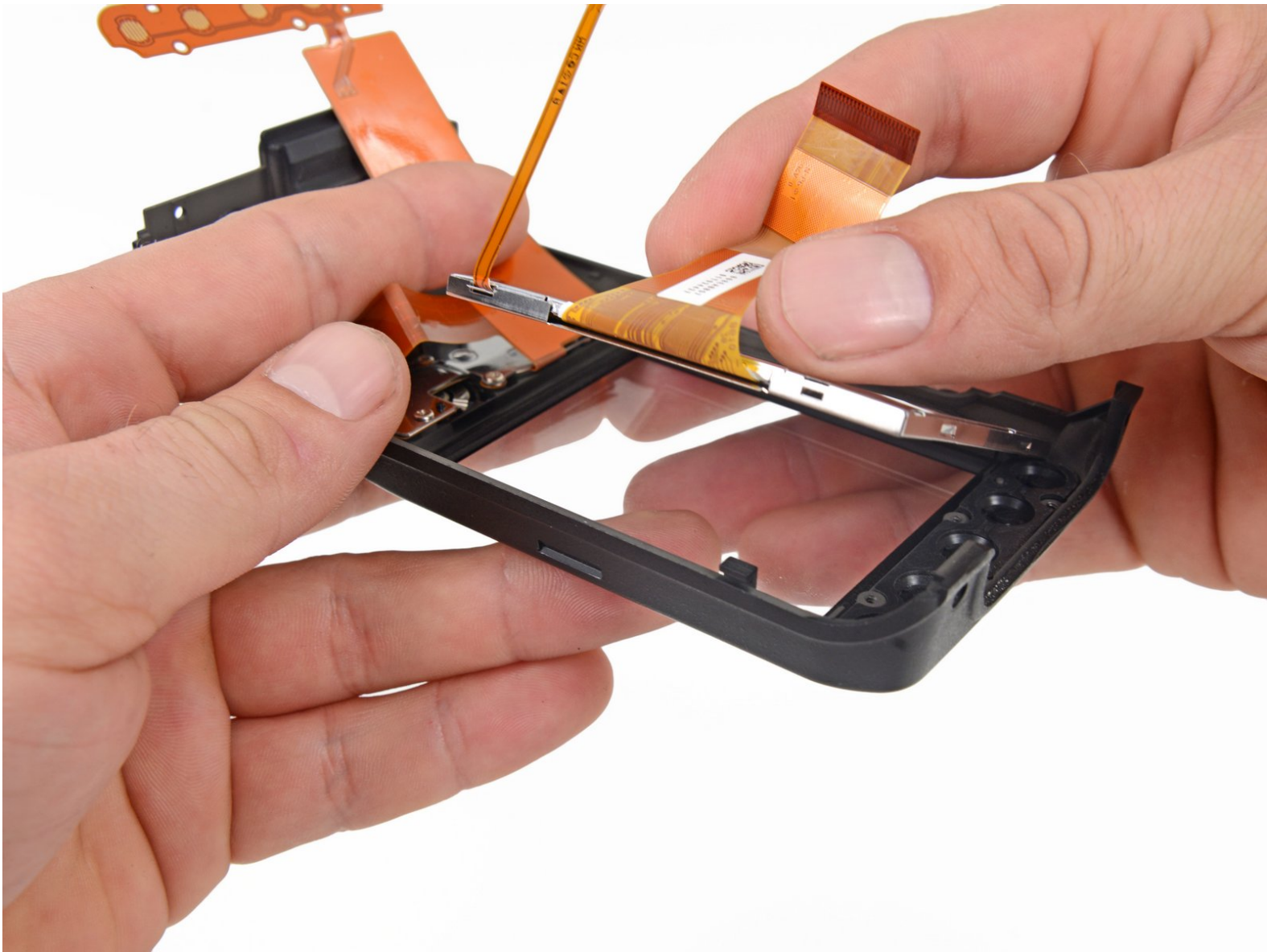




Nikon D90 LCD Replacement

This guide outlines the process of replacing the LCD in the D90.

Written By: Ryan Lutz





TOOLS:

- [Phillips #000 Screwdriver](#) (1)
-

Step 1 — Rear Case



- Slide the eyepiece up and off the viewfinder.

Step 2



- Using a PH000 screwdriver, remove the two 4.8mm Phillips screws from the back of the viewfinder.

⚠ Some screws may be JIS. Be wary of this if your PH000 does not feel like it is properly gripping the screws.

Step 3



- Remove the two 6.4mm Phillips screws on the right side of the camera, near the SD card slot.

Step 4



- Remove the two 6.4mm Phillips screws on the left side of the camera, near the I/O ports.

Step 5



- On the bottom of the camera,
 - remove the two 5.3mm Phillips screws
 - and the other two 6.3mm Phillips screws.

Step 6



- Using a spudger, separate the bottom panel from the rear case just enough to clear the two clips on the rear casing in the next step.

Step 7



- Lift the rear case off of the back of the camera.

⚠ Don't pull the casing completely off yet, as the ribbon cables are still connected.

- Be mindful of the two clips, making sure to keep the bottom panel far enough away to clear them.

Step 8



- Set the rear casing off to the side so you can access the ZIF connectors.
- ⓘ The orientation shown in the picture seems to be the best position for the casing to sit comfortably without stressing the ribbon cable connections.

Step 9



- Use a spudger to lift the black tab on the [ZIF connector](#).
- Disconnect the ribbon cables from their respective ZIF connectors on the logic board.

Step 10



- Separate the rear casing from the camera.

Step 11 — LCD



- Peel back the yellow tape covering the cable connector on the back of the casing you removed.

Step 12



- Using the spudger, rock the connector back and forth to disconnect the cable.

Step 13



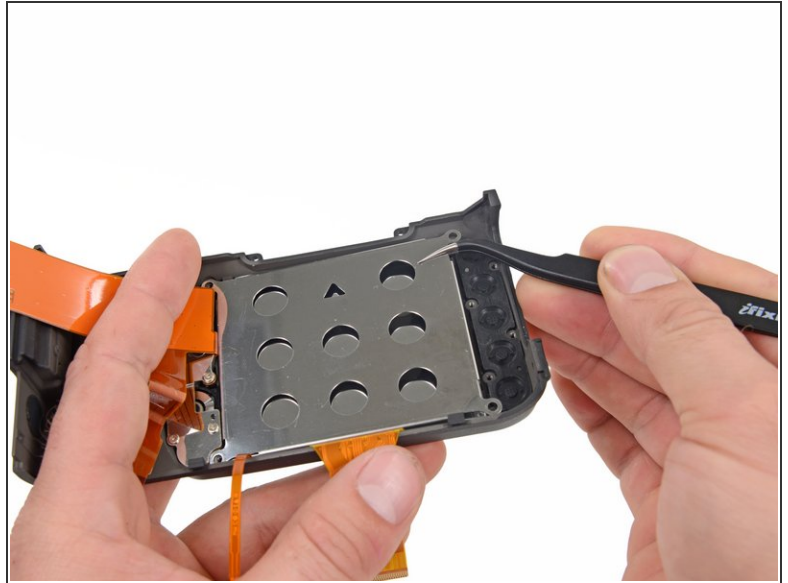
- Remove the eight Phillips screws securing the brackets to the rear casing.
 - Four 4.2mm screws securing the large metal bracket.
 - Four 3.4mm screws securing the bracket that covers the ribbon cable.

Step 14



- Remove the silver metal plate.

Step 15



- Fold the ribbon cables up and out of the way.
- Remove the metal shield covering the LCD.

Step 16



- Lift and remove the LCD from the rear case.

To reassemble your device, follow these instructions in reverse order.