

Written By: Chad



## INTRODUCTION

Before delving into this repair guide, make sure to have a large area for placement of removed components and to keep screws organized.

## Before removing the speaker assembly, follow these steps:

### Shut down the computer

If unsure whether your computer is off or in hibernation, turn it on, and then shut down through the operating system.

### Disconnect devices and power

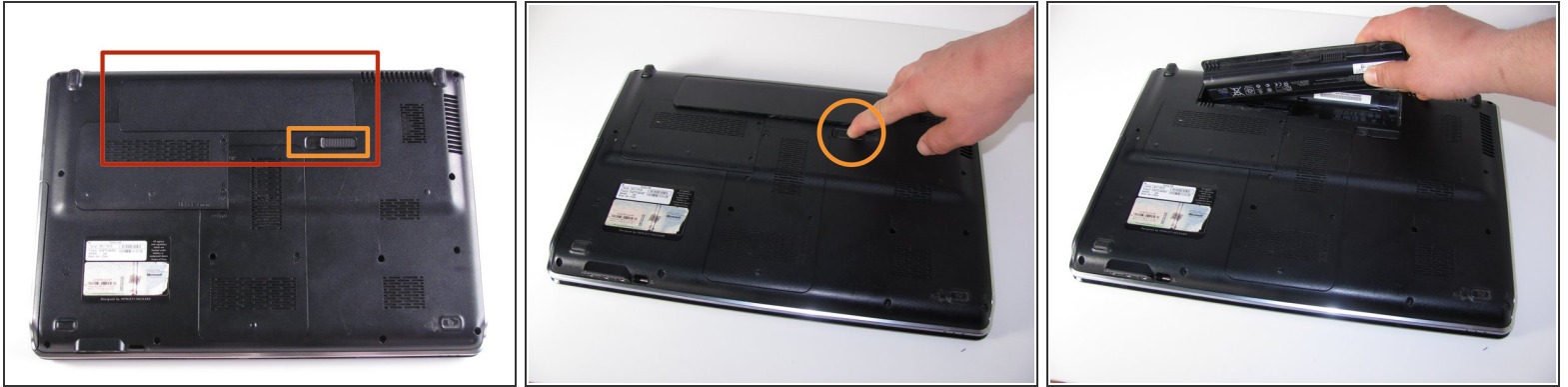
Disconnect all external devices, plug-ins and power from the computer.



### TOOLS:

- [Phillips #1 Screwdriver](#) (1)
-

## Step 1 — Battery



- Locate the battery on the bottom side of the laptop.
- Slide the release switch and the battery will pop out.
- Remove the battery

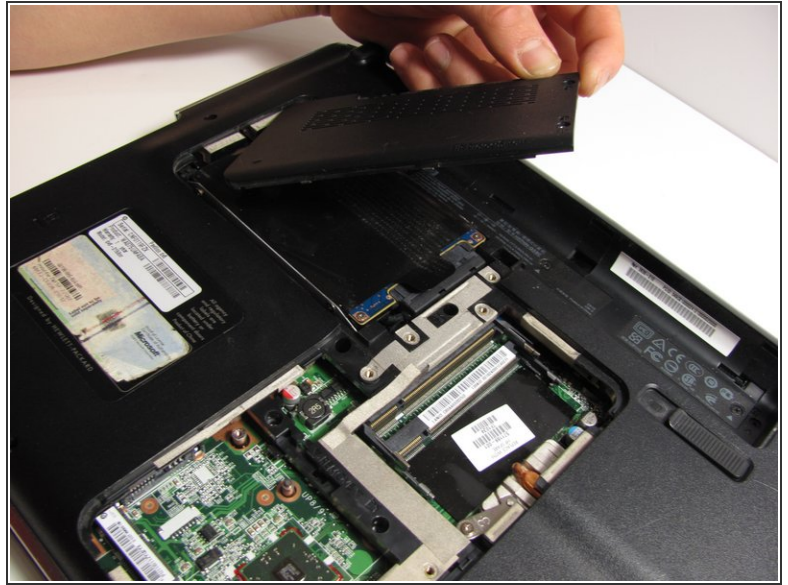
## Step 2 — Keyboard



- Using a Philips #1 Loosen the three 7mm captive screws that secure the memory module compartment cover to the computer.
- Lift the rear edge of the cover, swing it up and to the front, and remove the cover.

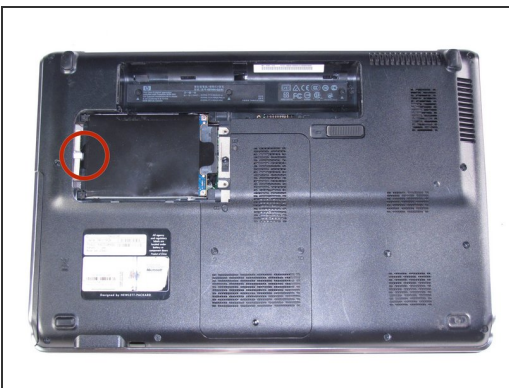


### Step 3



- Loosen the two 6mm captive screws that secure the hard drive port bezel cover to the computer, using a Philips #1.
- Lift the right side of the hard drive port bezel cover, swing it up and to the left, and remove the cover.

### Step 4



- Use the Mylar tab to lift the hard drive up, and then slide it to the left to release it from the hard drive bay.

## Step 5



- Disconnect the hard drive cable from the system board.
- Remove the hard drive from the hard drive bay and set it aside.

## Step 6



- With laptop upside down locate the three sets of screws that fasten the keyboard and switch cover.
  - Two Phillips 7mm screws that secure the switch cover to the computer.
  - Four Phillips 4.0mm screws that secure the switch cover to the computer. (these are inside the battery bay)
  - Four Philips 7mm screws that secure the keyboard to the computer.
- Remove all ten screws.



## Step 7



- Turn the computer over, and locate the Switch Cover.
- Using the Safe Pry Tool, un-clip the Switch Cover until it detaches from the computer.
- ⓘ The clips will need careful prying to unhook.

## Step 8



- Slide the Switch Cover onto the LCD Monitor, exposing the Speaker Assembly.
- ⚠ There are two ribbon cables still attached to the speaker assembly
- Detach the two ribbon cables from the speaker assembly.

## Step 9



- Remove the three silver Phillips 3.5mm screws that secure the keyboard to the computer.
- Lift the rear edge of the keyboard and slide the keyboard back until the keyboard connector on the system board is accessible.

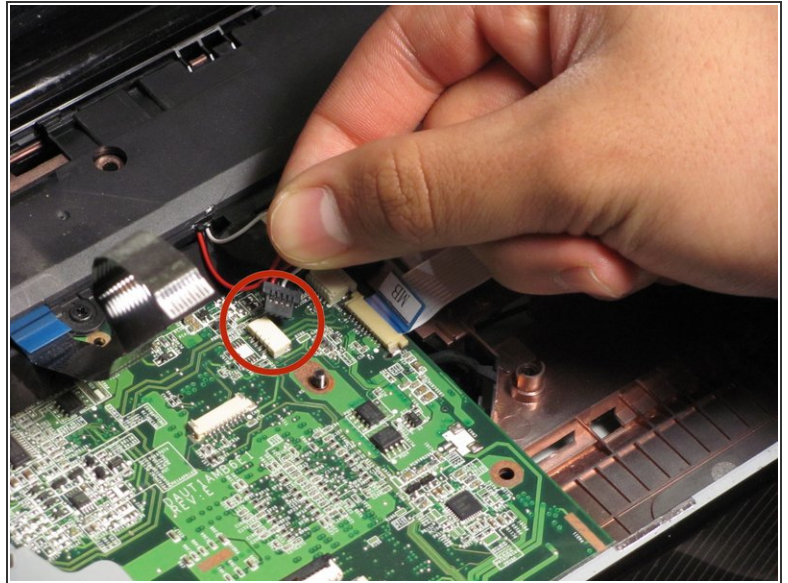
## Step 10



- Unhinge the zero insertion force (ZIF) connector to release the ribbon cable then pull gently on the cable to release.
- ⓘ You need to unhinge the blue plastic to release the ribbon cable from the main board.
- The keyboard can now be lifted off and set aside.

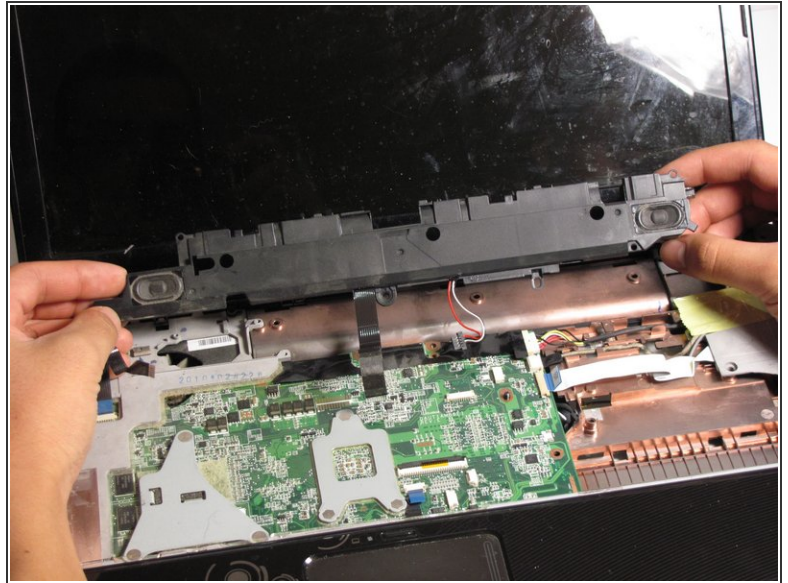
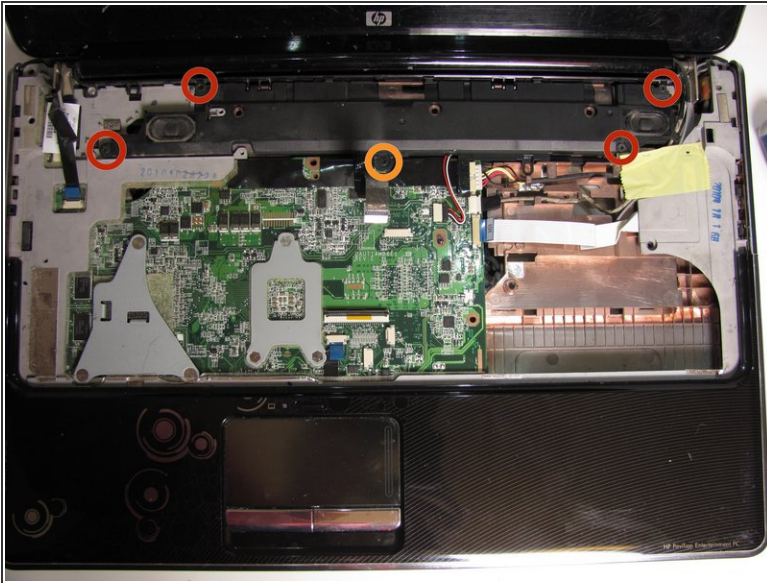


## Step 11 — Speaker Assembly



- Position the computer with the keyboard facing up its front edge toward you.
- Disconnect the speaker cable from the system board.

## Step 12



- Using the Phillips #1 screwdriver, remove the four Phillips 4mm screws that secure the speaker assembly.
- You will also need the Phillips #1 screwdriver to remove the Phillips 7mm screw that secures the center of the speaker assembly.
- Remove the speaker assembly from the computer.

To reassemble your device, follow these instructions in reverse order.