



# Canon EOS 300 Front Panel Replacement

Removing the front panel of Canon EOS 300.

Written By: Jordan Tang



---

## INTRODUCTION

The front panel will be removed in order to access other areas of the camera such as the battery door and top panel



### TOOLS:

- [Phillips #00 Screwdriver](#) (1)
-

## Step 1 — Batteries



- Open up the battery door.

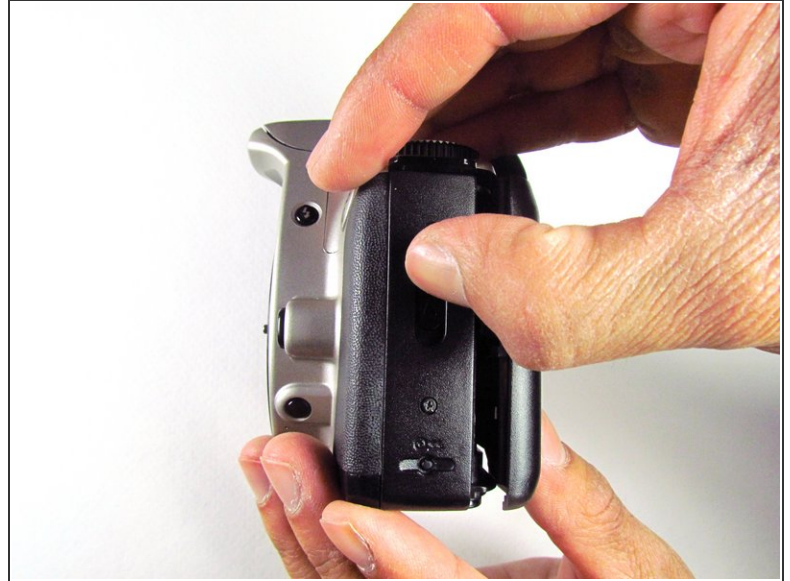
## Step 2



- Remove the batteries from the camera by sliding them out into your palm.



### Step 3 — Side Panel with Lever



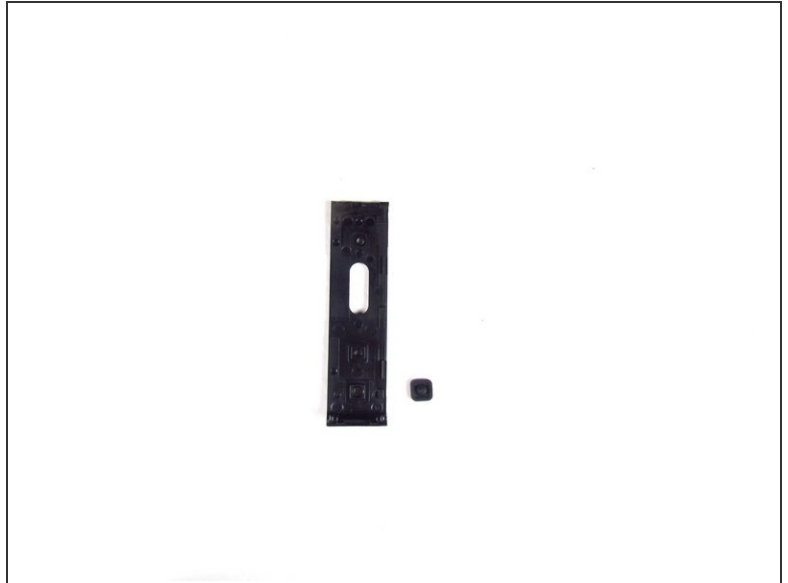
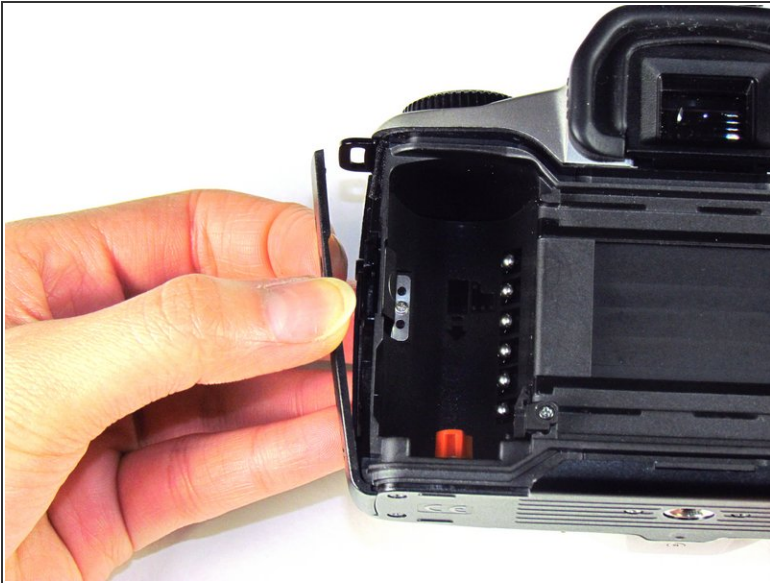
- Release the side latch to open the back panel.

### Step 4



- Remove the two black 4.5mm screws above and below the latch.

## Step 5



- Using your finger, carefully pry open the side panel from the top of camera.
- Pull panel downwards to remove.
- ⓘ Make sure to keep track of the small black piece of rubber under the latch.

## Step 6 — Front Panel



- Remove the two silver 6mm Phillips #1 screws.



## Step 7



- Flip camera over to the bottom.
- Remove the one 5mm Phillips #1 silver screw.

## Step 8



- Remove the front panel by pulling away from the side with the lever.

To reassemble your device, follow these instructions in reverse order.