



Conair Cord-Keeper 169XR Cord Retracting Mechanism Replacement

Having trouble with your Conair 169XR blowdryer...

Written By: Candace



INTRODUCTION

Having trouble with your Conair 169XR blowdryer cord retracting? This guide is for you if your cord will not retract at the bottom of your Conair blowdryer.

The retracting wheel retracts the cord into the bottom of the blowdryer. A faulty retracting wheel will not work when the "retract" button is pressed.

Make sure to power your Conair blowdryer off and disconnect from any external power sources before beginning to ensure safety.

Conair Troubleshooting Page: [Conair Cord-Keeper 169XR Troubleshooting Page](#)

TOOLS:

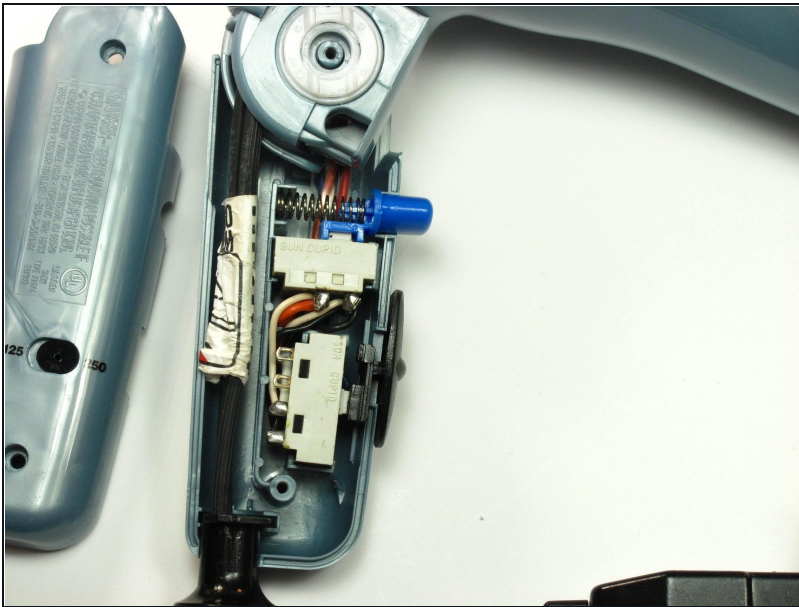
[Phillips #2 Screwdriver](#) (1)

Step 1 — Handle Cover



- Unscrew the **two 18 mm long Phillips #2** screws on the side of the hair dryer.

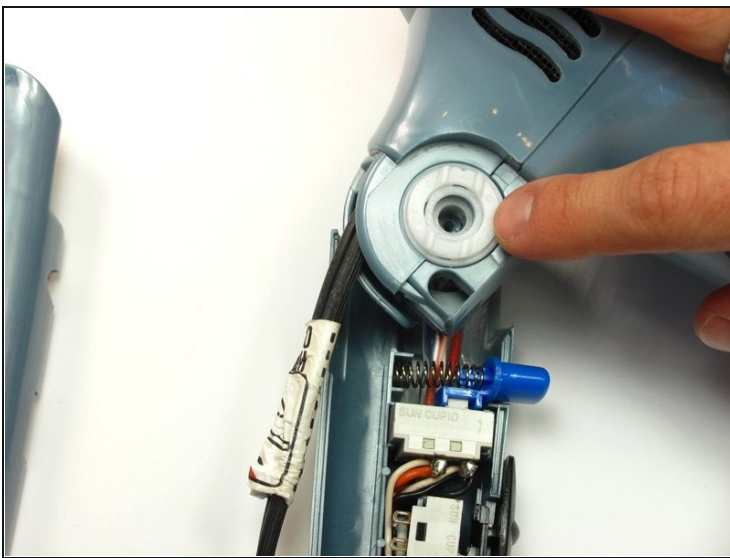
Step 2



⚠ Be cautious of pieces that can possibly fall out when removing the face of the handle.

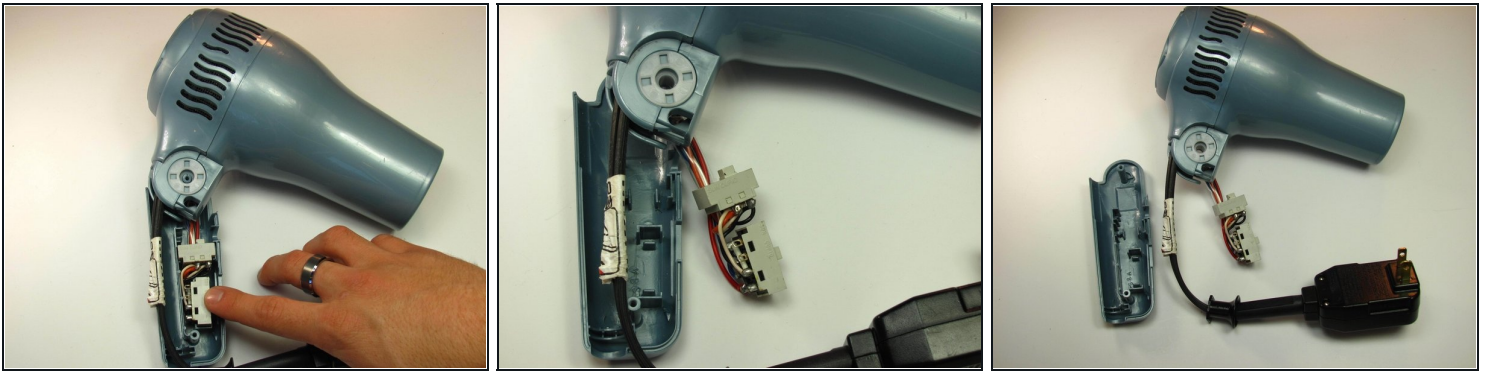
- Once you have taken the screws out, take the top half of the handle off by lifting it off of the dryer.

Step 3 — Dryer Head



- Remove the inner white disk piece by gently pulling it out with your finger nail.

Step 4



- Gently remove the tan boxes (power supply) by wiggling them out of place and set them aside so you can take the back part of the handle off.

Step 5



- Remove the inner white disk piece from the base of the dryer head by gently pulling it out with your finger nail.

Step 6



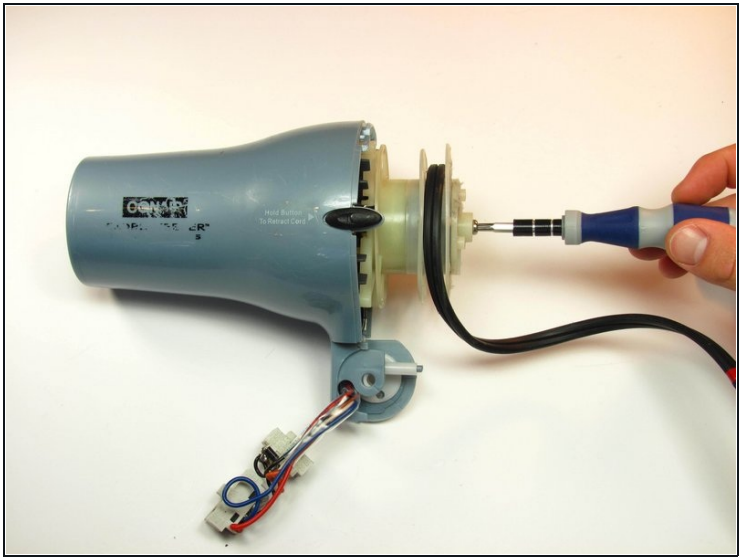
- Unscrew the **three 12 mm long Phillips #2 screws** to remove the back of the hairdryer.

Step 7



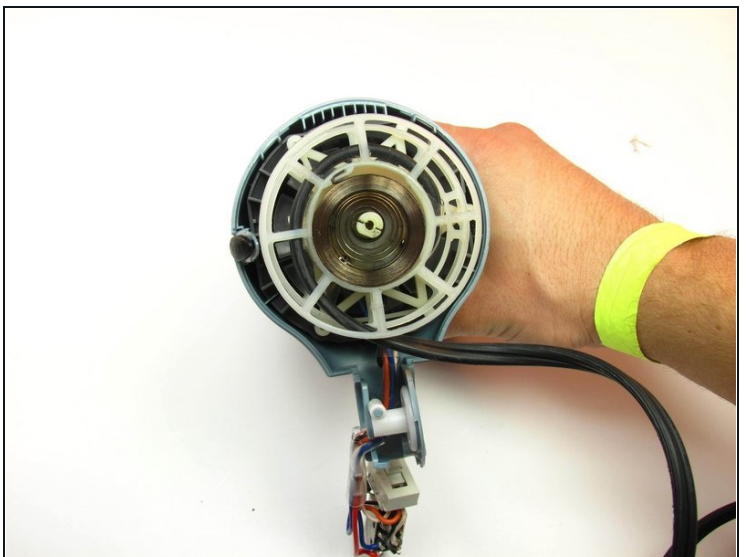
- Once the **three** screws are removed, pop the back of the dryer off by wiggling it until it comes loose. This shouldn't take too much effort.

Step 8



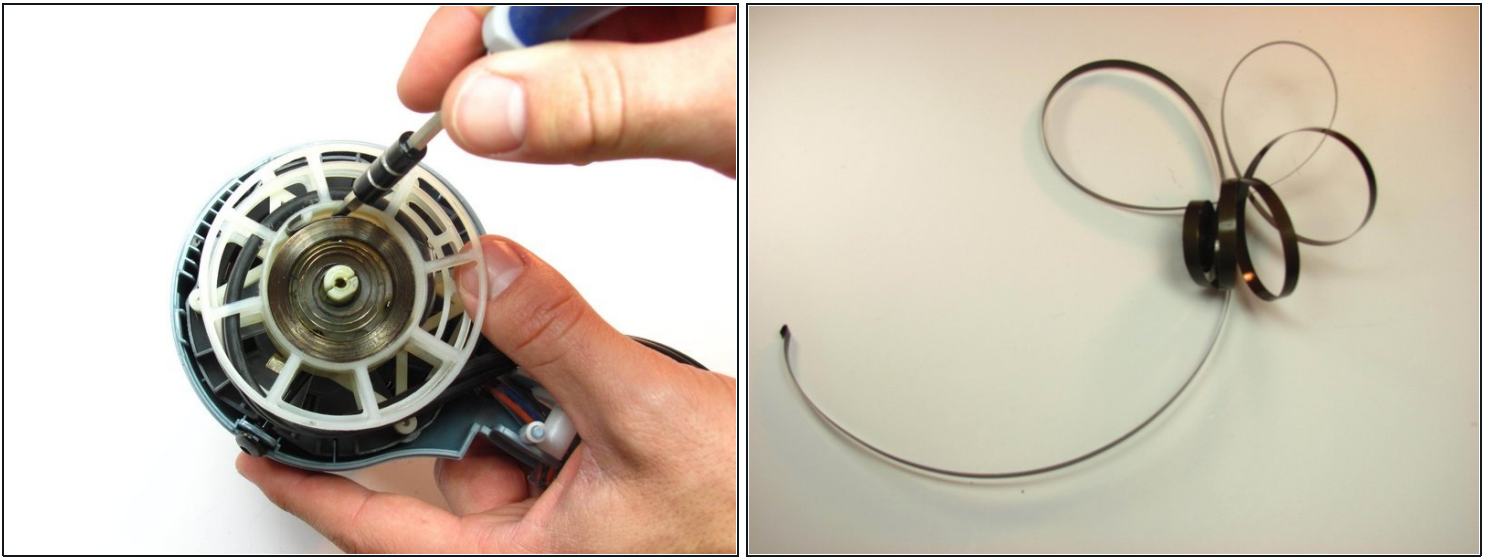
- Unwind the cord and lay it to the side so you can get to the screw in the middle easier.
- Remove the **single 12 mm long Phillips #2 screw** in the middle of the cord track.

Step 9



- Take off the white cap that covers the heating coil. You will see a wound up piece of metal (cord retracting coil) underneath once the cap is removed.

Step 10

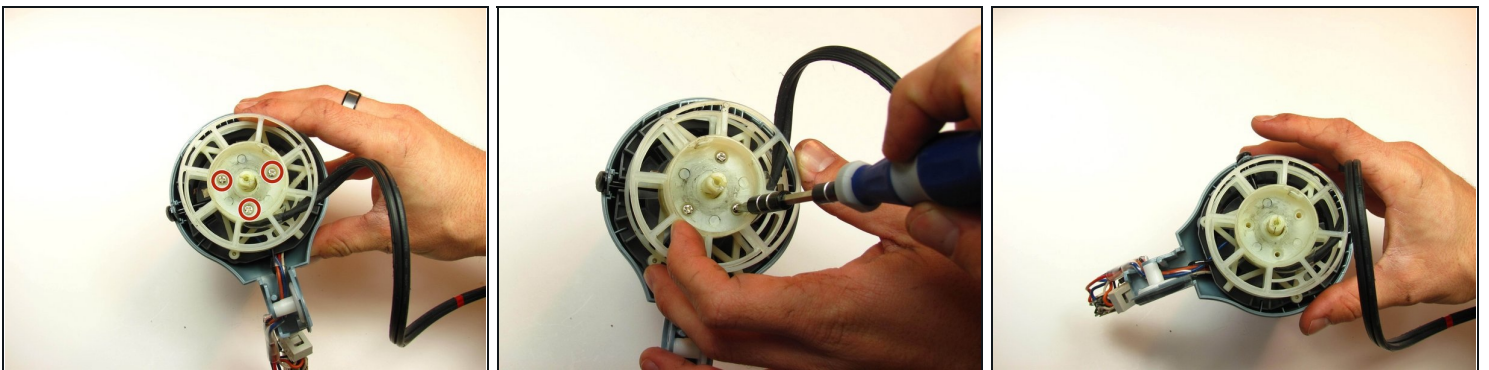


★ When removing the coil, make sure it stays wound up. It could very easily pop out, and you would have to wind it all the way back up and try to squeeze it back into the slot when you reassemble the dryer.

- To remove the coil, use your screw driver to pop the coil out of the slot.

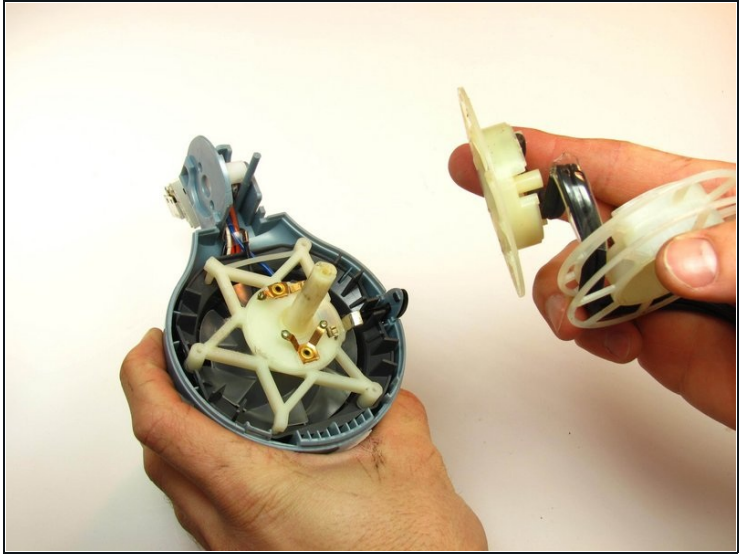
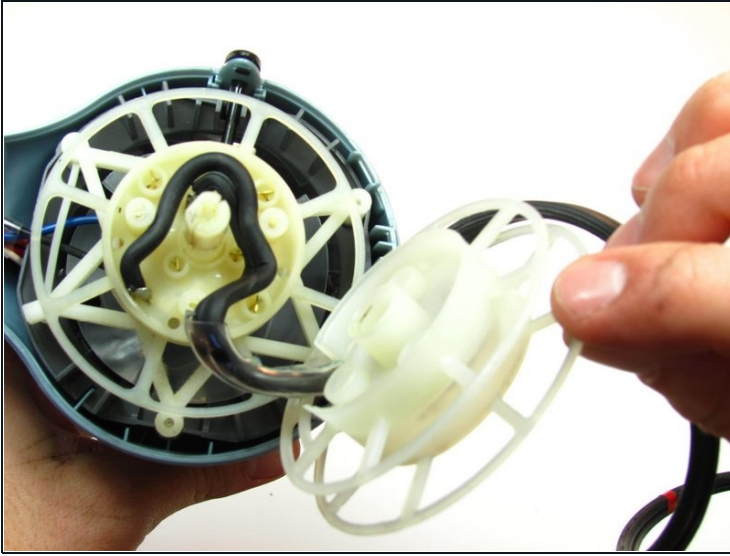
i The second image is what the coil would look like if it came undone when you removed it.

Step 11



- Once the coil is removed, unscrew the **three 11 mm long Phillips #2 screws** underneath to remove the retracting wheel.

Step 12 — Cord Retracting Mechanism



- Remove the two parts of the retracting wheel.

To reassemble your device, follow these instructions in reverse order.