



PlayStation 3 Slim Laser Unit (Laser and Mechanism) Replacement

PlayStation 3 - How to replace Laser Lens and...

Written By: ZFix



PS3

PlayStation 3 Slim

Laser Unit replacement

INTRODUCTION

PlayStation 3 - How to replace Laser Lens and Mechanism (Laser Deck).

[video: <https://www.youtube.com/watch?v=VwWaRIjCndw>]

More info about disassembling, you can find in

[PlayStation 3 Slim Teardown](#)

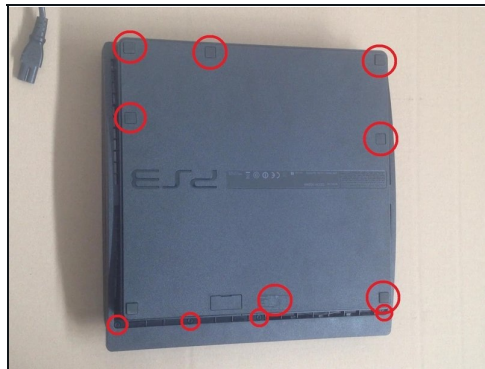
TOOLS:

Phillips #00 Screwdriver (1)
T8 Torx Security Bit Screwdriver (1)

PARTS:

iFixit Thermal Paste (1)

Step 1 — Laser Unit (Laser and Mechanism)



- Disconnect all cables. You have 4x Torx T8 screws and 7x Phillips screws. Now you can remove outer case.

Step 2



- To remove the power supply, first disconnect the two cables, then the 2 Phillips screws. Then lift it upwards.

Step 3



- Separate cables, unscrew the screw and remove the Blu Ray drive.

⚠ Depending on the model of your PS3 Slim, the number of cables to be removed may vary between 2 and 4. If your model has more than one ribbon cable, remove the drive very carefully, as a fourth ribbon cable may be hidden underneath.

Step 4



- Disassemble the upper metal shield by first unscrewing the 3 Phillips screws.

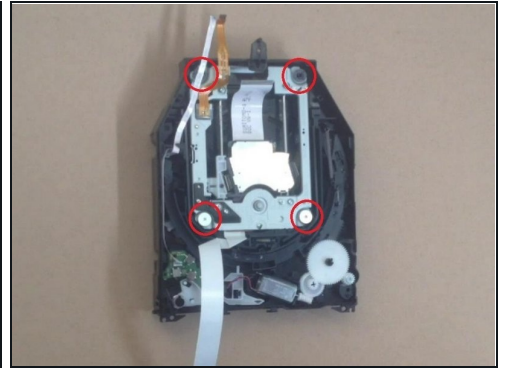
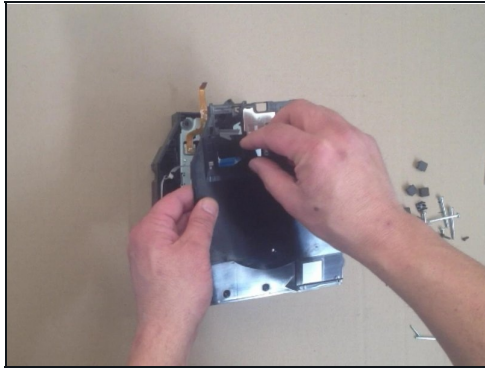
⚠ On the 2-cables model, you'll need to unscrew an additional 2 small Phillips screws, located on the underside of the drive. While you're at it, unscrew the 2 other Phillips screws at the bottom of the shield. (Their presence does not prevent removal of the upper metal shield, but removing them will be useful later).

Step 5



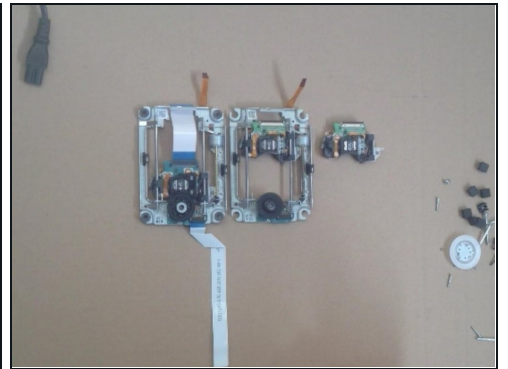
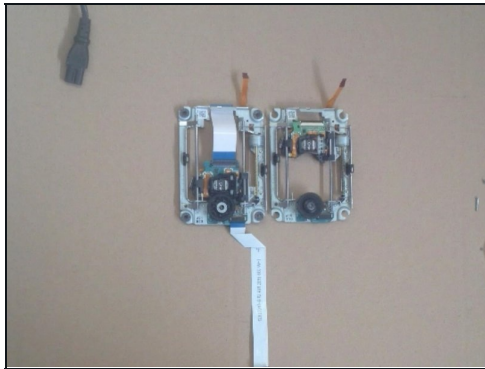
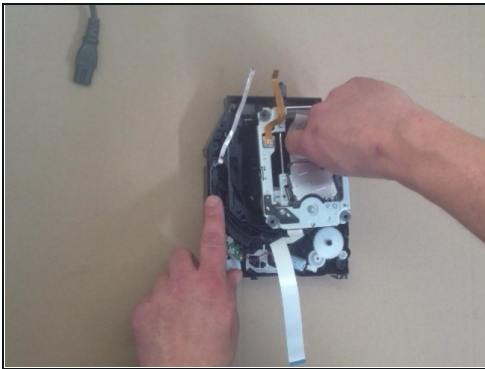
- For the 2-cables model, remove the two very small phillips screws in each lower corner referenced by the red circles.
- For the 4-cables model, remove the small Phillips screw in the bottom left corner referenced by the red circle.

Step 6



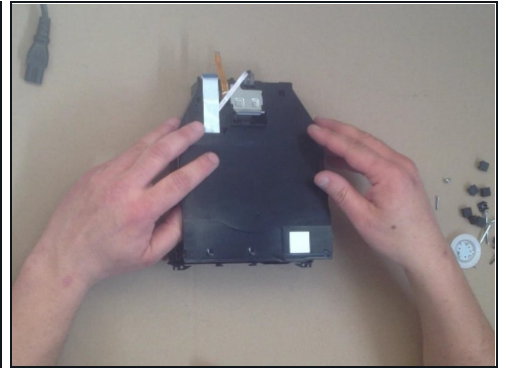
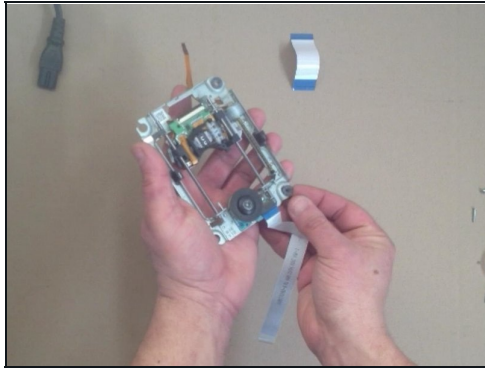
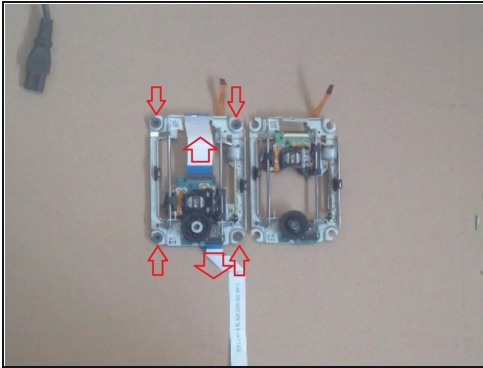
- Carefully remove the plastic shell, paying attention to the cable that runs through it for the 4-cables model.

Step 7



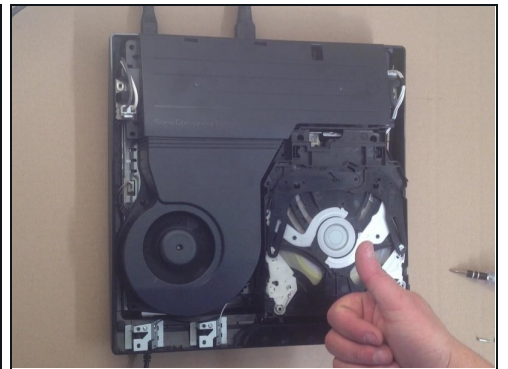
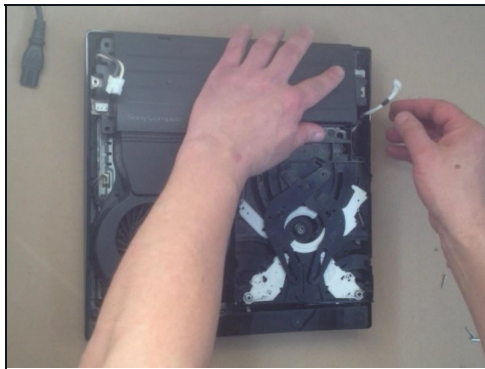
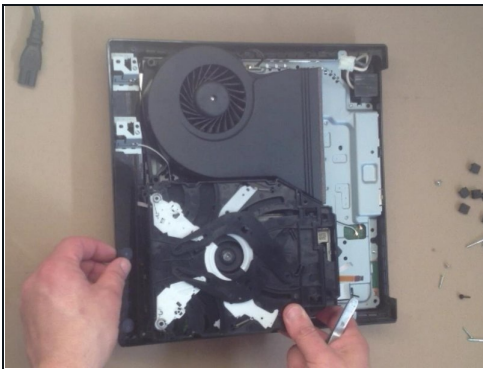
- Remove the 4 Phillips screws at each corner of the laser mechanism.
- Then remove the mechanism.

Step 8



- If necessary, transfer parts and screws from the old mechanism to the new one.

Step 9



- You can test the console before full assembling.
- To do this, reassemble the blu-ray drive, reconnect its cables, and reconnect the power supply.

To reassemble your device, follow these instructions in reverse order.