



Toshiba Satellite L455D-S5976 Optical Drive Replacement

This guide will show you how to replace the optical drive in your device.

Written By: NateJohnson



INTRODUCTION

The optical drive is what reads a CD or DVD when placed in the drive. To replace it, follow the steps outlined in this guide.



TOOLS:

- [Phillips #1 Screwdriver](#) (1)
 - [Spudger](#) (1)
-

Step 1 — Battery



- Unlock the right tab by sliding it to the right with your finger.

Step 2



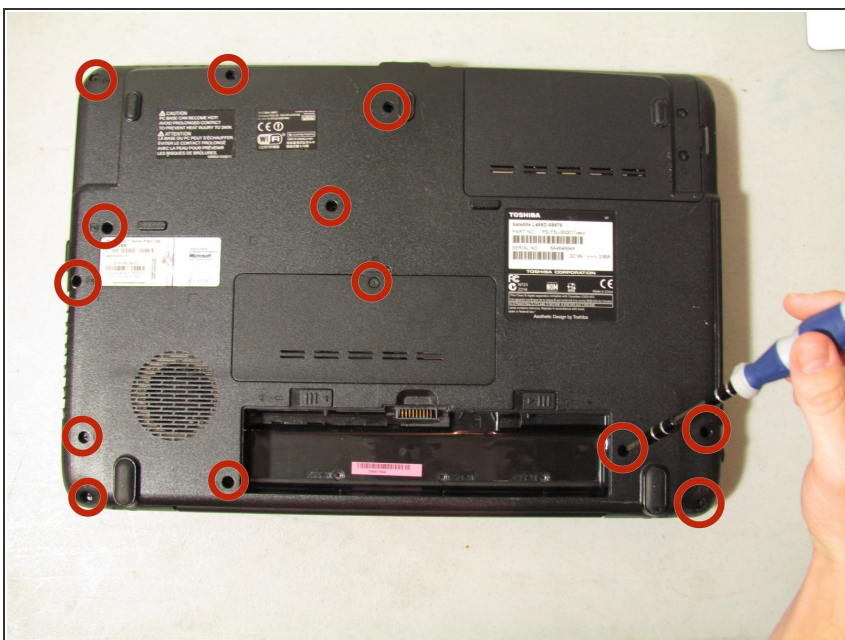
- Hold the left tab to the left using your left hand.

Step 3



- Remove the battery by placing your finger in the middle groove and lifting up.

Step 4 — Optical Drive



- Remove the 13 Phillips #1 10mm screws from the backside of your computer using a Phillips #1 screwdriver.

Step 5



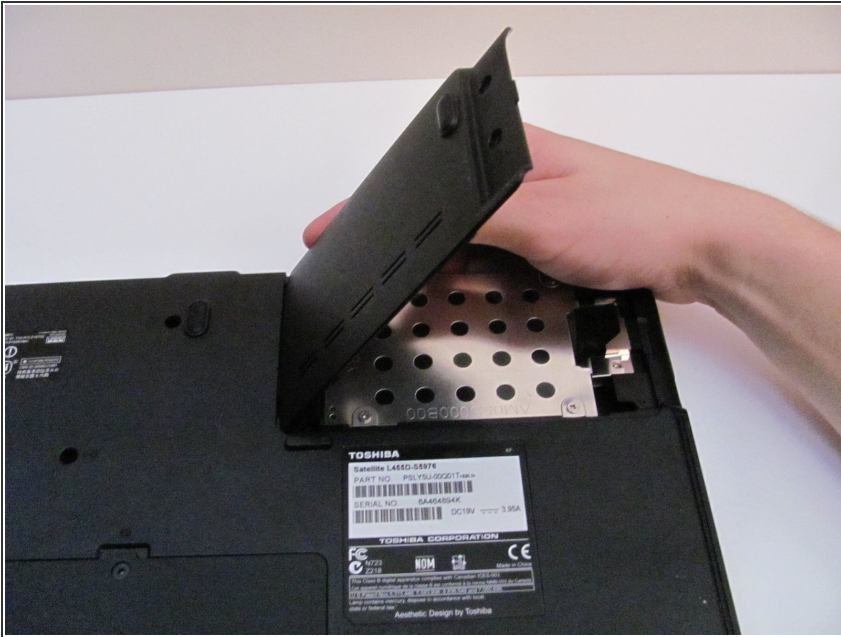
- Remove the two Phillips #1 6mm screws from the backside of your computer using a Phillips #1 screwdriver.

Step 6



- Remove the three 3mm screws from beneath the battery with a Phillips #1 screwdriver.

Step 7



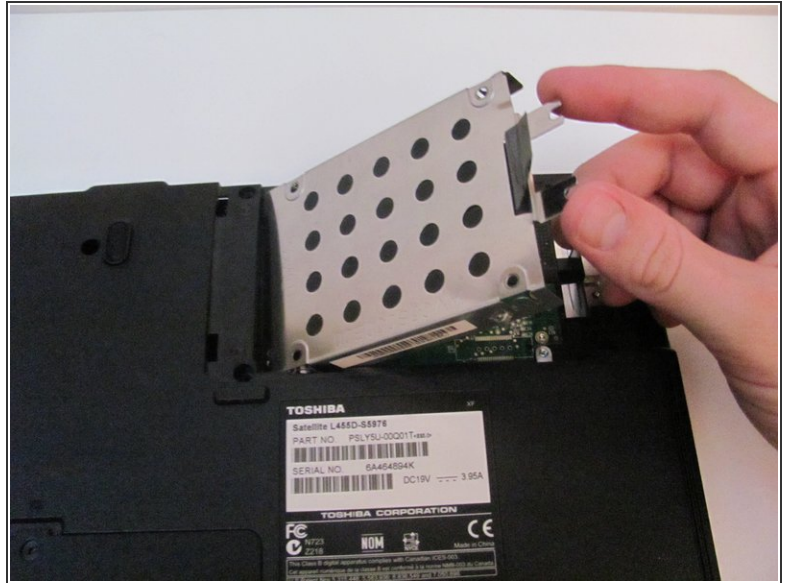
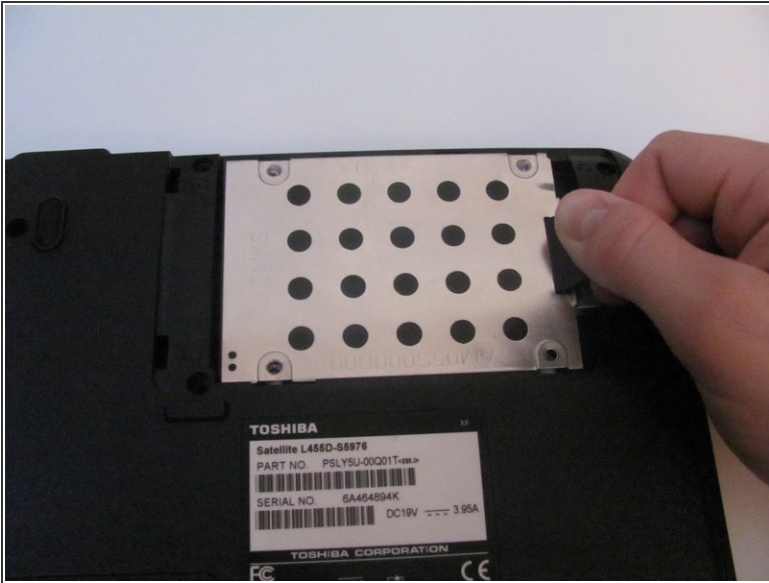
- Lift up the corner panel and remove it with your hand.

Step 8



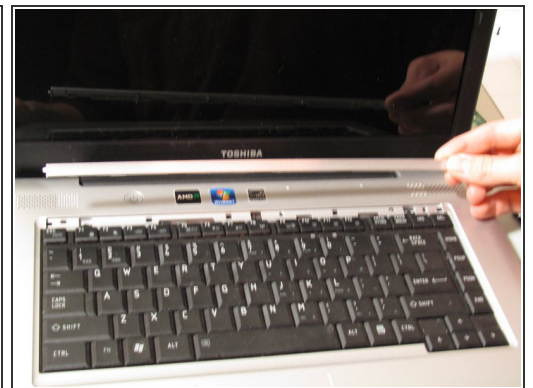
- Unscrew the four Phillips #1 3mm using a Phillips #1 screwdriver.
- Unscrew the four 10mm screws around hard drive using a Phillips #1 screwdriver.

Step 9



- To remove the hard drive case, first pull the black tab to the right.
- Then pull the black tab up to remove the case.

Step 10



- Remove the plastic strip above the "F" keys using the spudger by placing the small end of the spudger under the strip and lifting up.

Step 11



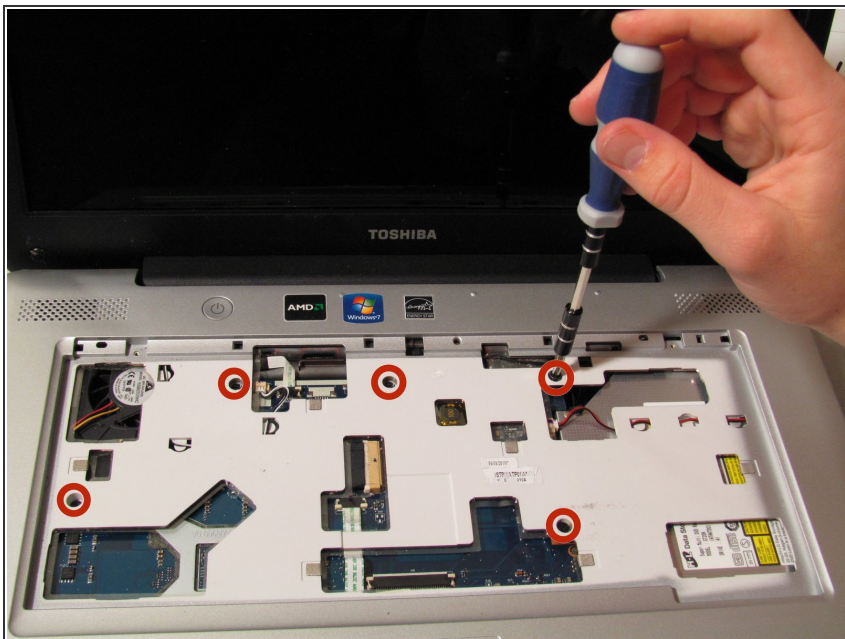
- Remove the two Phillips #1 3mm screws underneath the plastic strip using a Phillips #1 screwdriver.

Step 12



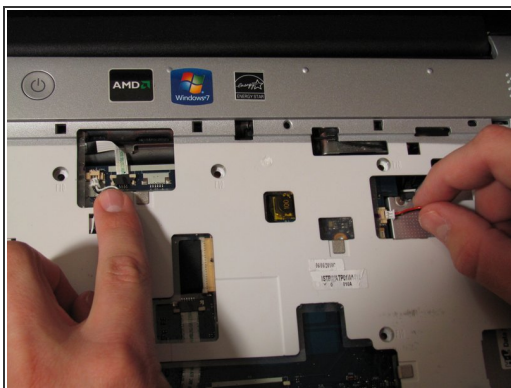
- Lift the keyboard up and remove it with your hands.

Step 13



- Remove the five Phillips #1 10mm screws underneath the keyboard using a Phillips #1 screwdriver.

Step 14



- Lift up the plastic panel and carefully disconnect the red and white ports.
- Remove the panel

The image shows the internal components of a Toshiba Satellite L4550-S597 laptop. The motherboard is visible with various components including the RAM, battery, and other internal parts. A red circle highlights the battery connector, which is a small, circular component located near the battery. The battery is labeled with the Toshiba logo and the model number L4550-S597. The motherboard has a white label with the text "CT-R40997-S3UVP10" and a barcode. The RAM is labeled with "068B8". The battery is labeled with "TOSHIBA", "Satellite L4550-S597", "PART NO. PSLY5U", "SERIAL NO. 5A", and "N723 Z218". The battery also has a warning label that says "This Class B digital product may cause radio interference. Use of this product with a radio receiver may cause interference." and "Aesthetically pleasing design.".

-

- Page 10 of 10