



iRobot Roomba 551 Bumper Sensor Replacement

This guide will provide steps needed to replace the bumper sensor on the iRobot Roomba 551.

Written By: Cody Rhoads



INTRODUCTION

Is your Roomba banging its head against the wall? Follow this guide to replace the bumper sensor.



TOOLS:

- [Phillips #1 Screwdriver](#) (1)
 - [Phillips #2 Screwdriver](#) (1)
-

Step 1 — Side Brush



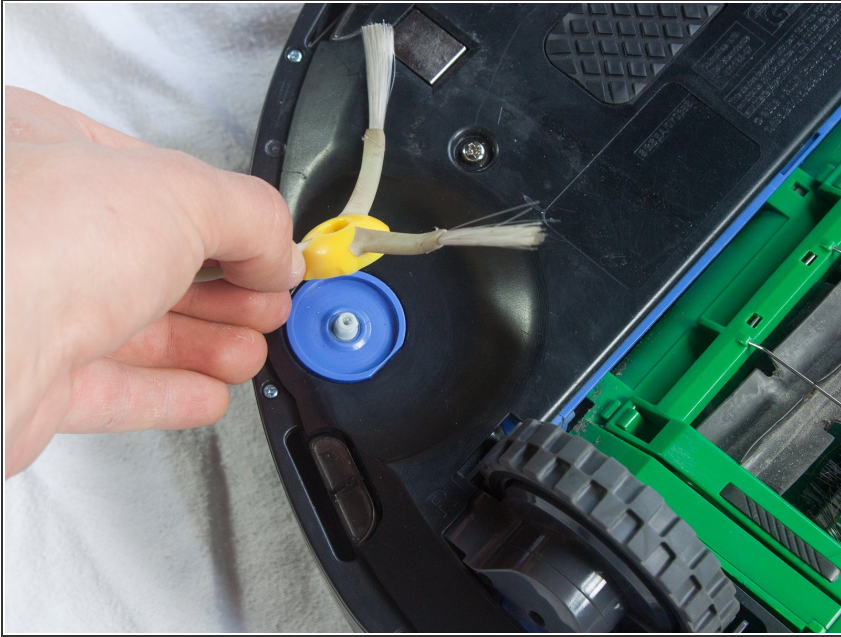
- Place your Roomba upside-down on a hard surface.

Step 2



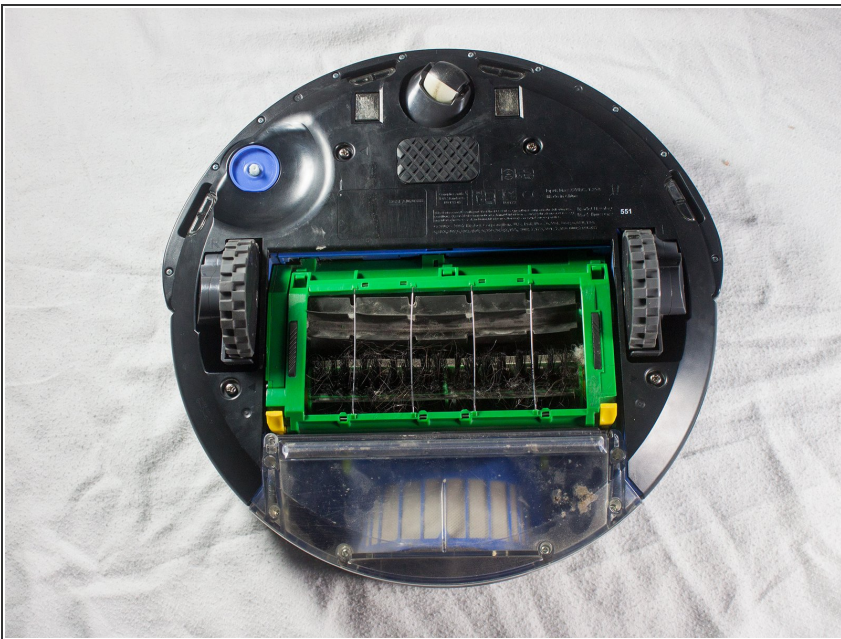
- While holding the side brush in place, use a Phillips #1 screwdriver to remove the 4.5mm screw from the center of the brush.

Step 3



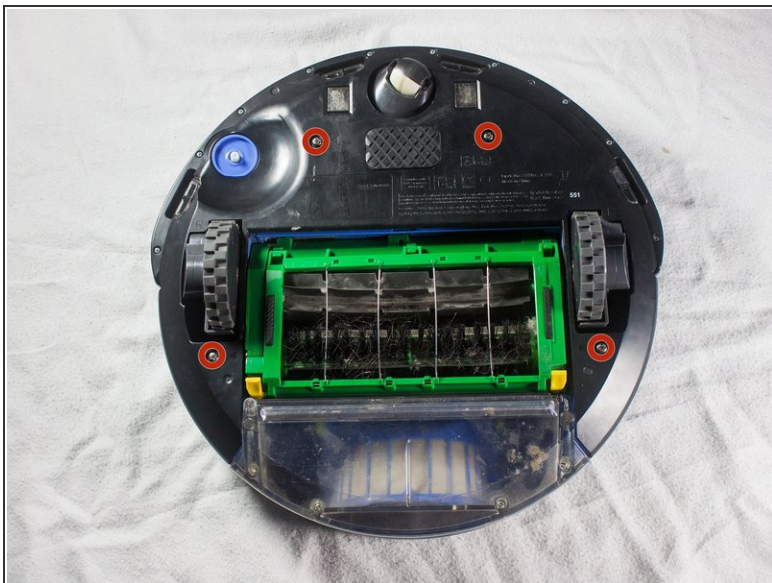
- Gently pull upwards on the brush to remove it.

Step 4 — Bottom Plate



- Rotate the Roomba upside-down so the bottom is facing towards you.

Step 5



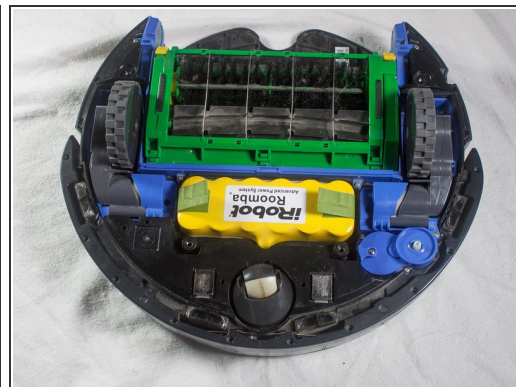
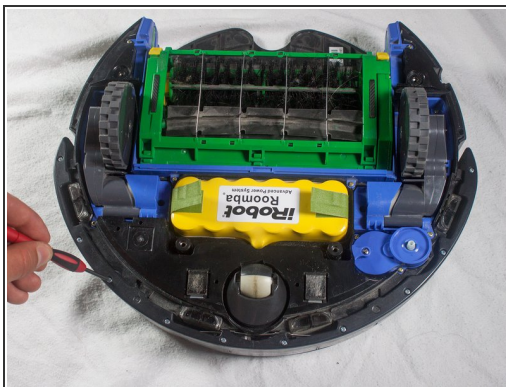
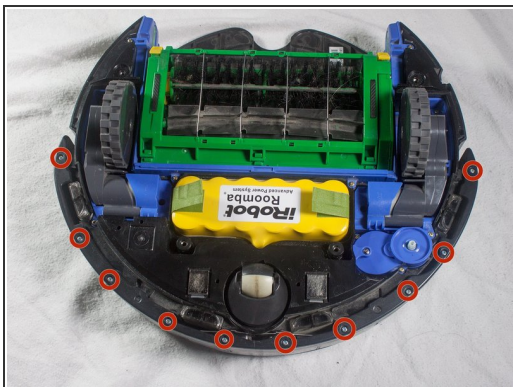
- Using a Phillips #2 screwdriver, remove the captive screws that hold the bottom plate in place.

Step 6



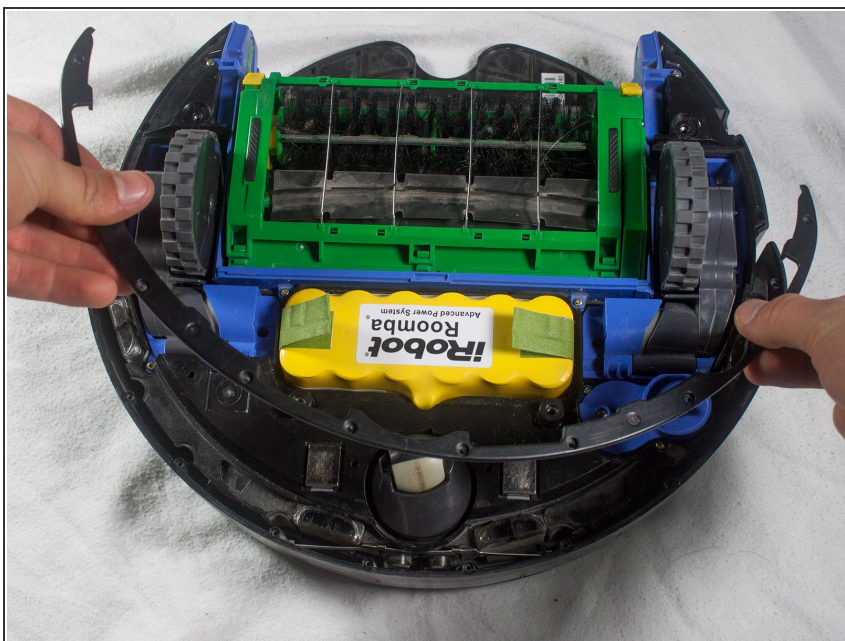
- Carefully lift the bottom plate.
- ⚠ The battery is only secured in place by the bottom plate, and may fall out once the bottom plate is removed.

Step 7 — Bumper



- With a Phillips #1 screwdriver, remove the ten 12mm screws located along the bottom of the bumper.

Step 8




- Lift the bottom cover and set it to the side.

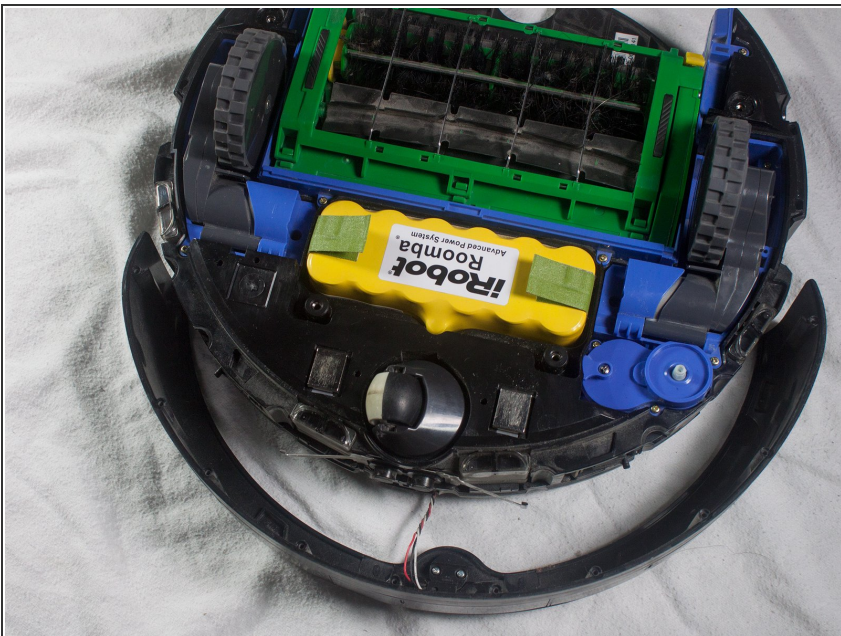
Step 9



- Flip the Roomba over, grasp the bumper, and gently lift to remove.

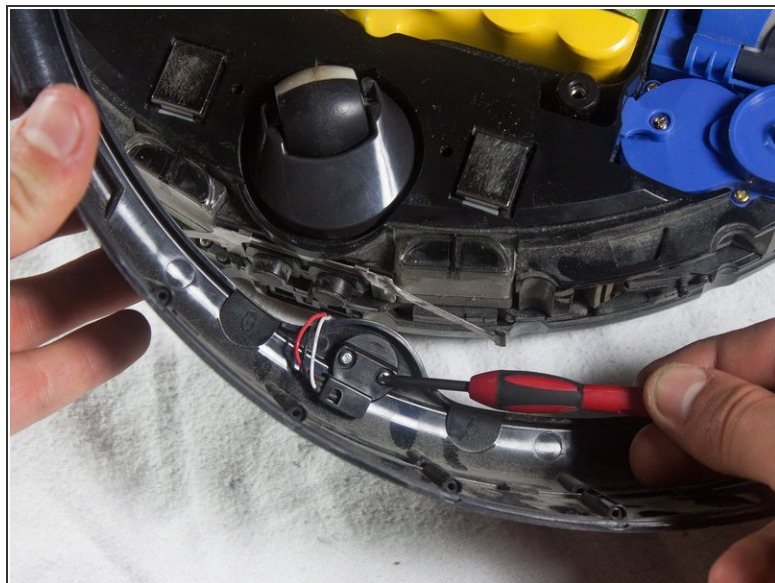
 The battery is not secured in place once the bottom plate has been removed, and may fall out when the Roomba is turned right-side up.

Step 10 — Bumper Sensor



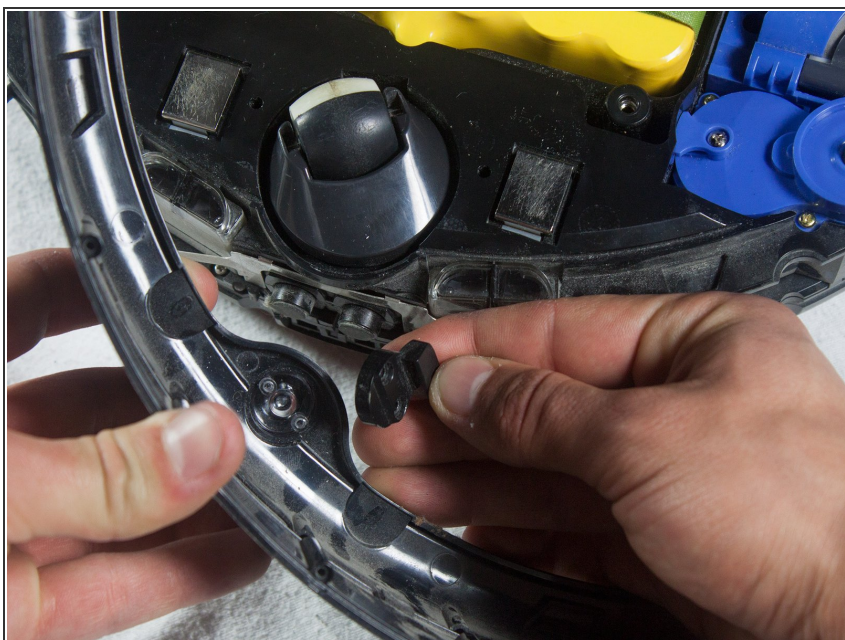
- Flip the Roomba so that the bottom is facing you.

Step 11



- Remove the two 5mm screws located near the center of the bumper using a Phillips #1 screwdriver.

Step 12



- Pull gently on the bottom of the sensor to remove.

Step 13



- Flip the bumper over and lift the sensor from its compartment.
- You are now free to replace the bumper sensor.

To reassemble your device, follow these instructions in reverse order.