



# Durofix RV332 Battery LED Replacement

Use this guide to replace a defective battery...

Written By: Tyler Vincent



# INTRODUCTION

Use this guide to replace a defective battery LED indicator from your Durofix RV332. A new battery LED is need to complete this repair.



## TOOLS:

[Outil pour ouvrir iFixit](#) (1)  
[Tournevis cruciforme #0](#) (1)  
[Soldering Iron](#) (1)  
[Pince coupante](#) (1)  
[Lead-Free Solder](#) (1)



## PARTS:

[L.E.D.](#) (1)

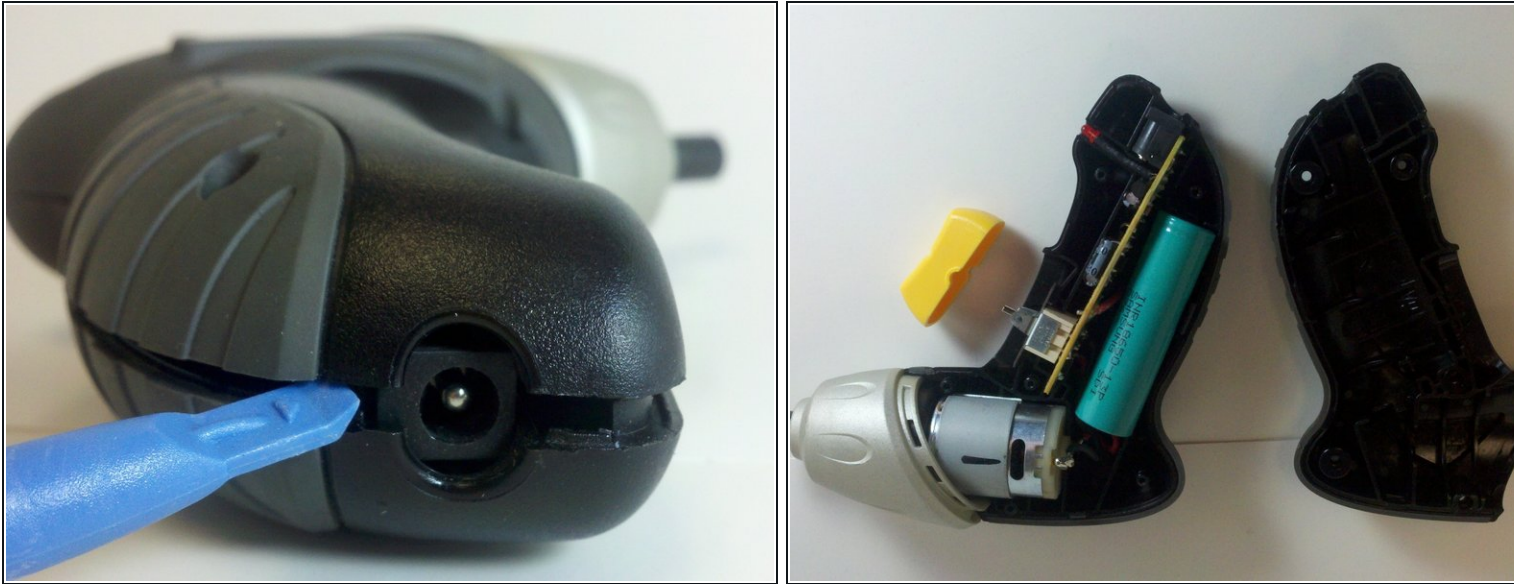
## Step 1 — Battery LED



- Remove the six 13 mm case screws with a #0 Phillips screwdriver from the side of the power screwdriver.

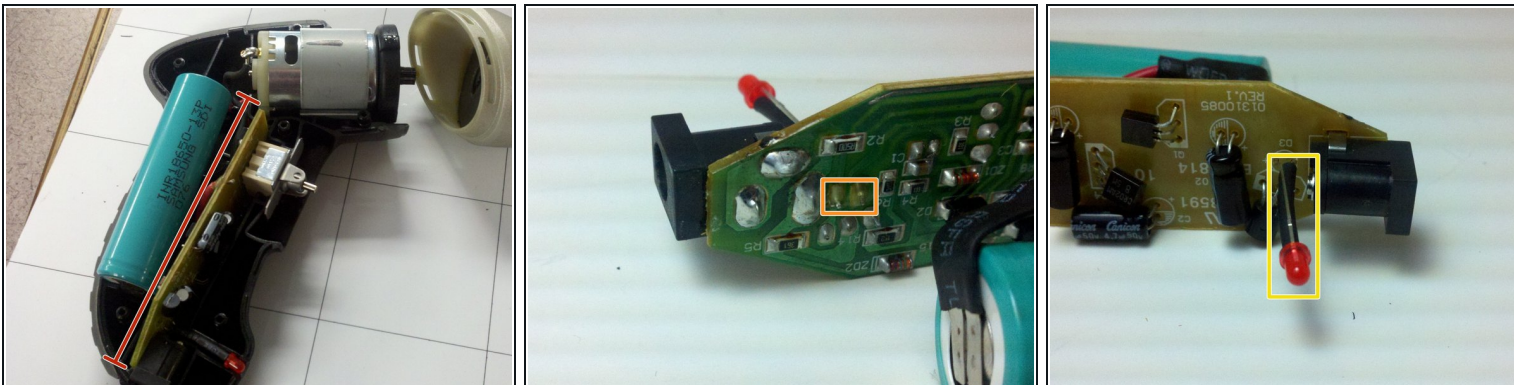


## Step 2



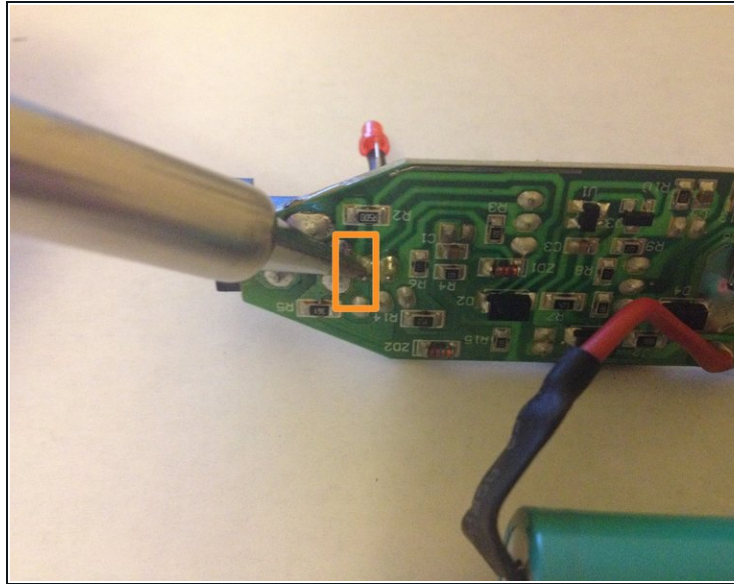
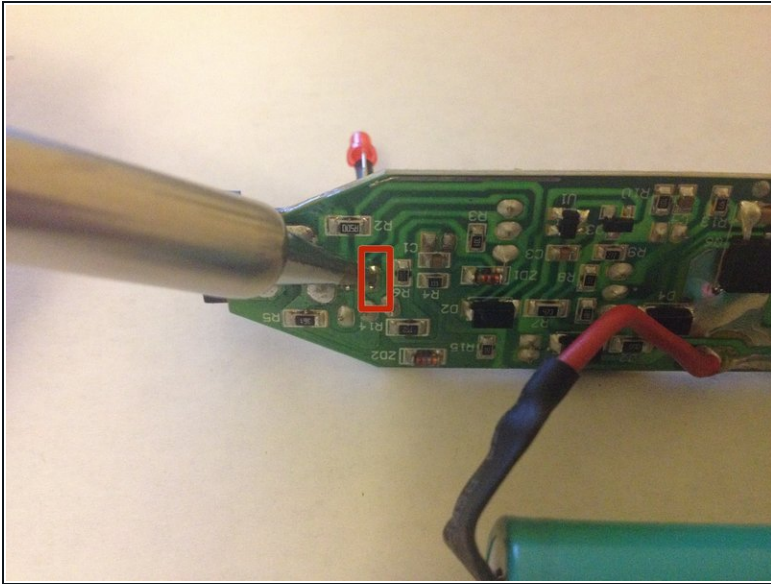
- Using a plastic opening tool, separate the case in two to expose the internals of the cordless screwdriver.

## Step 3



- Remove printed circuit board, LED, battery, and motor assembly from the screwdriver casing.
- Use a soldering iron to melt the solder from the LED's two pins on the printed circuit board.
- Remove the LED from the circuit board while the solder is still melted.

## Step 4



- Place the positive leg of the new LED through the positive hole in the printed circuit board and solder it into place.
- Place the negative leg of the LED through the negative hold in the printed circuit board and solder it into place.

To reassemble your device, follow these instructions in reverse order.