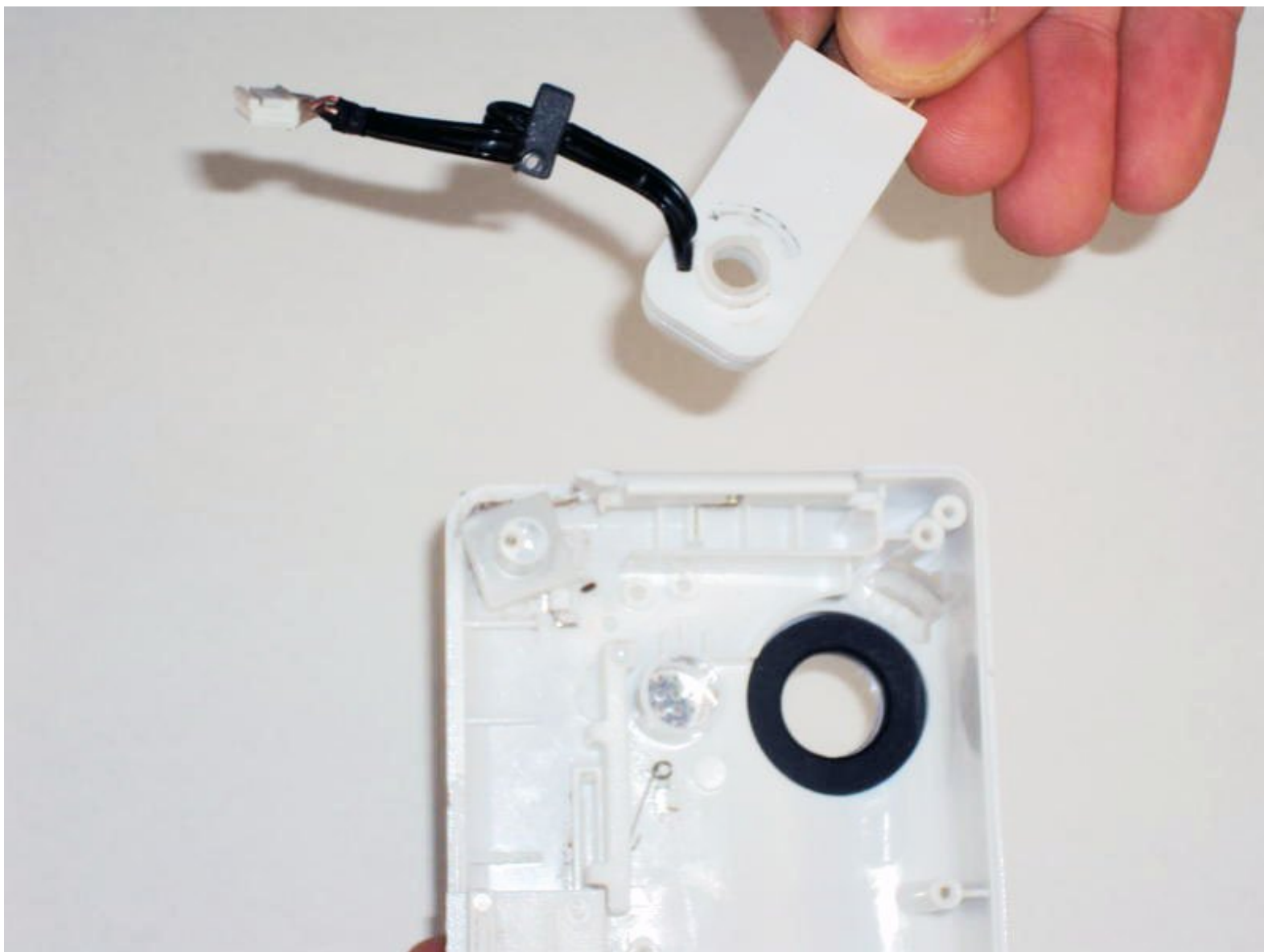




Disassembling Flip Video USB Port

Written By: Elizabeth



INTRODUCTION

This guide will show you how to open the outer shell of your Flip Video.



TOOLS:

- [Phillips #00 Screwdriver](#) (1)
 - [Tweezers](#) (1)
-

Step 1 — Outer Shell



- ✦ Turn off the device and take the batteries out.
- Remove metal sticker under the LCD screen with a spudger.
- ⓘ This may require a large force to pry off the glued sticker.

Step 2



- Remove the 4 gray screw caps with the spudger. These cover the screw heads and protect from dirt or grime.

Step 3



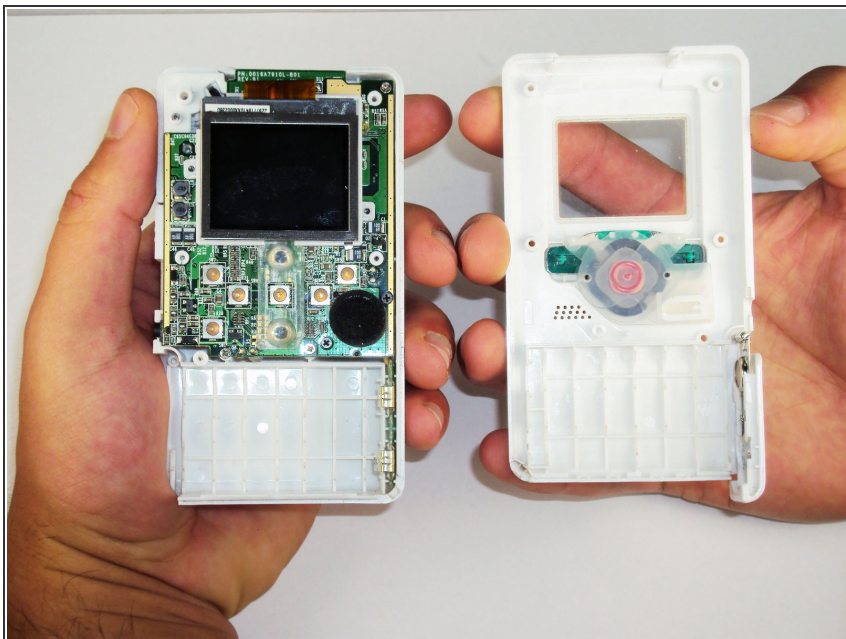
- Remove the 5 10mm screws with the #00 Phillips screwdriver. These connect the back of the outer shell to the front of the outer shell.

Step 4



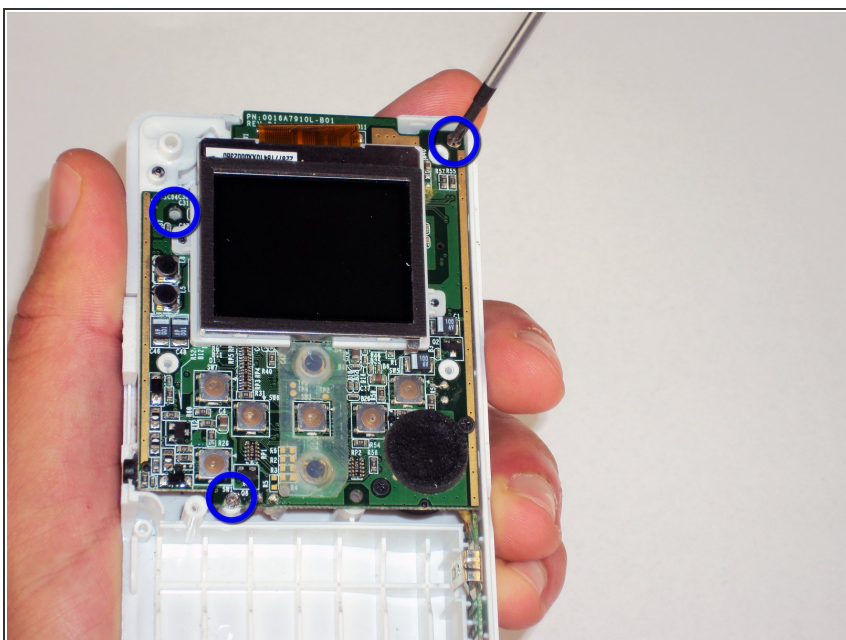
- Open battery door. This can be done by gently depressing and sliding the battery door downward.

Step 5



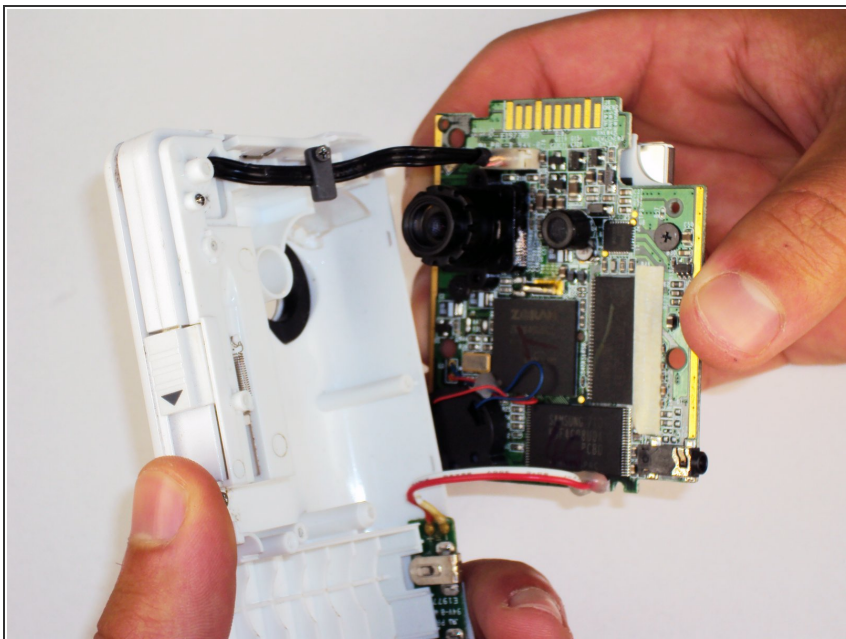
- Use the spudger to separate outer shells.
- The spudger must be inserted between the shell halves to pry the edges apart.
- Slowly work around the outside to separate the halves.

Step 6 — Circuit Board



- Remove the 3 5mm screws securing the circuit board to the front shell with the #00 Phillips screwdriver.

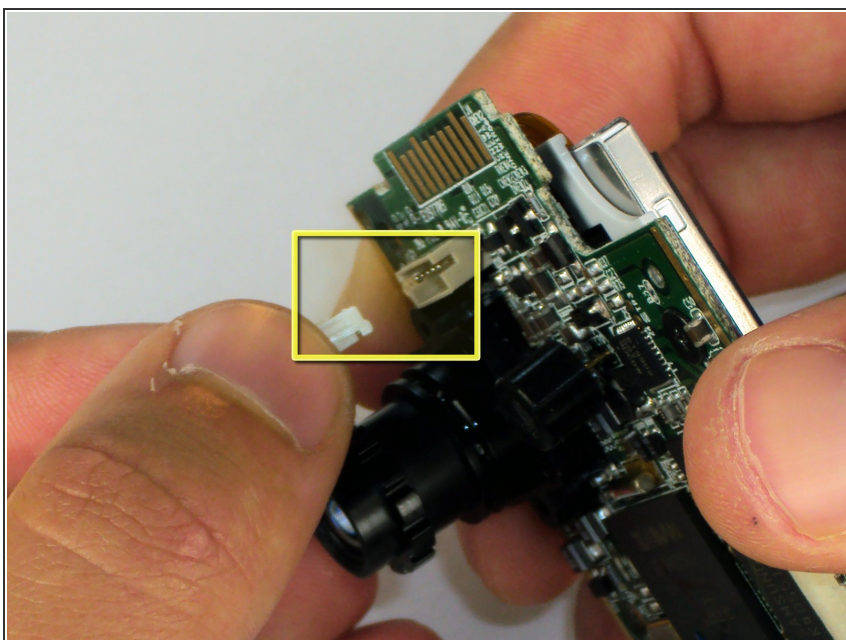
Step 7



- Slowly lift the left side of the circuit board.

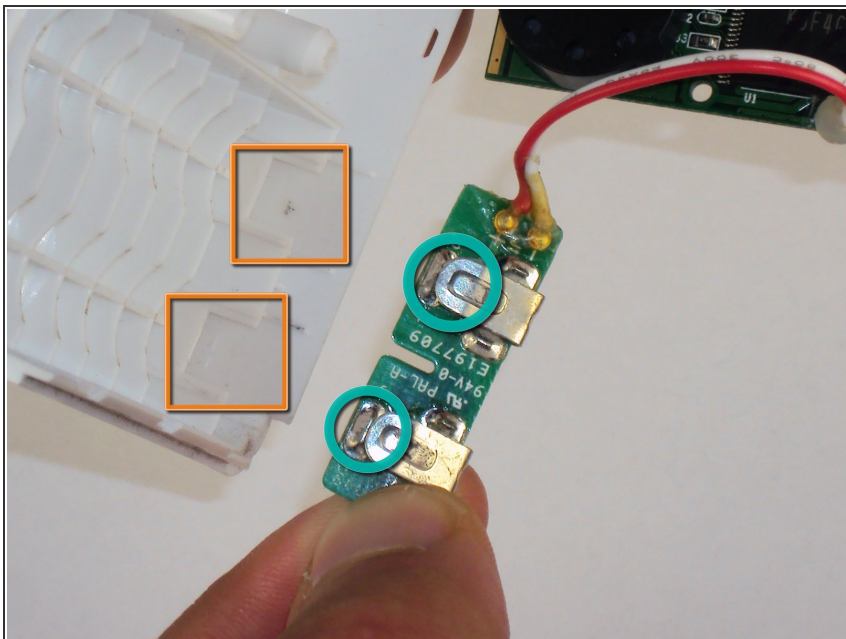
⚠ Do not attempt to remove the circuit board completely yet. It is still connected to the device.

Step 8



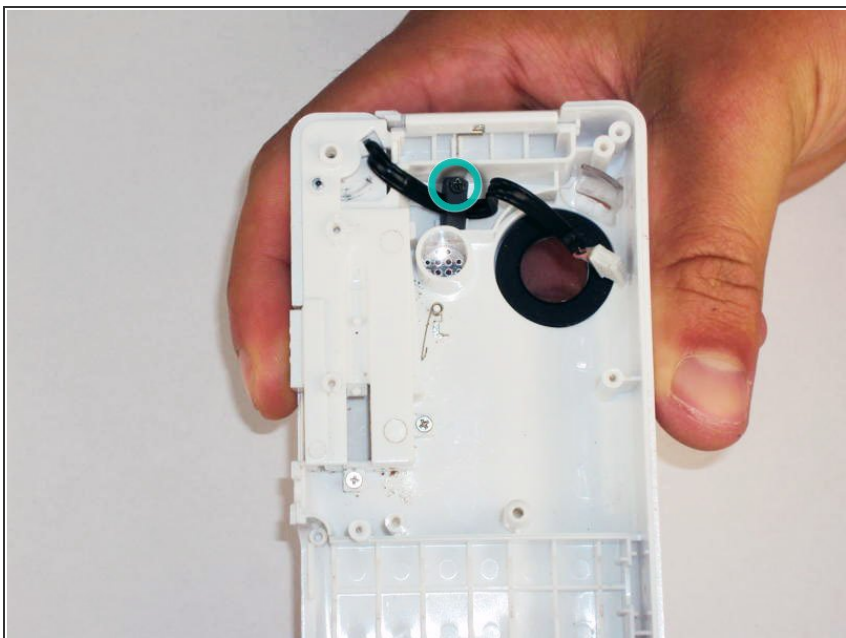
- Disconnect the USB port cable from the back side of the circuit board.

Step 9



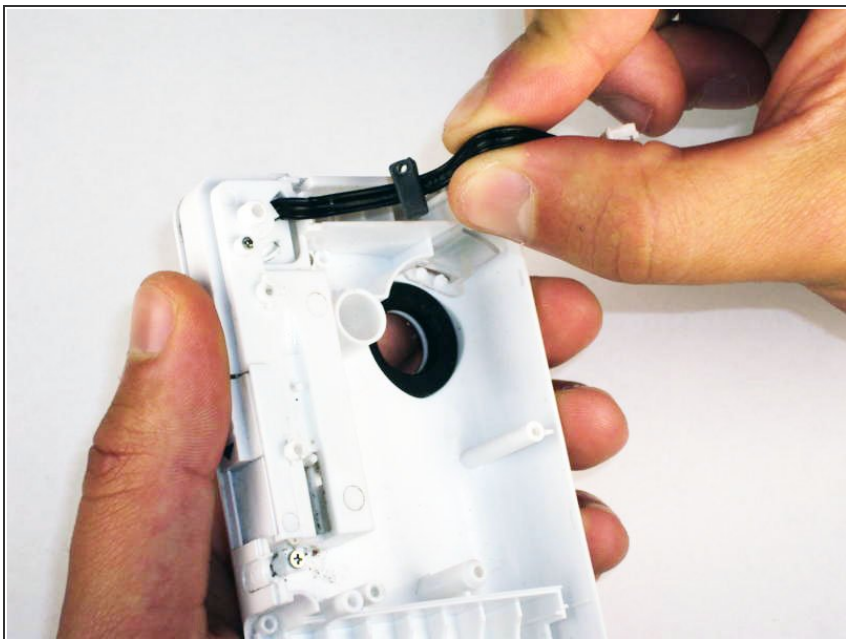
- Slide out the battery contacts.
- Battery contacts
- Slot where battery contacts were located

Step 10 — USB Port



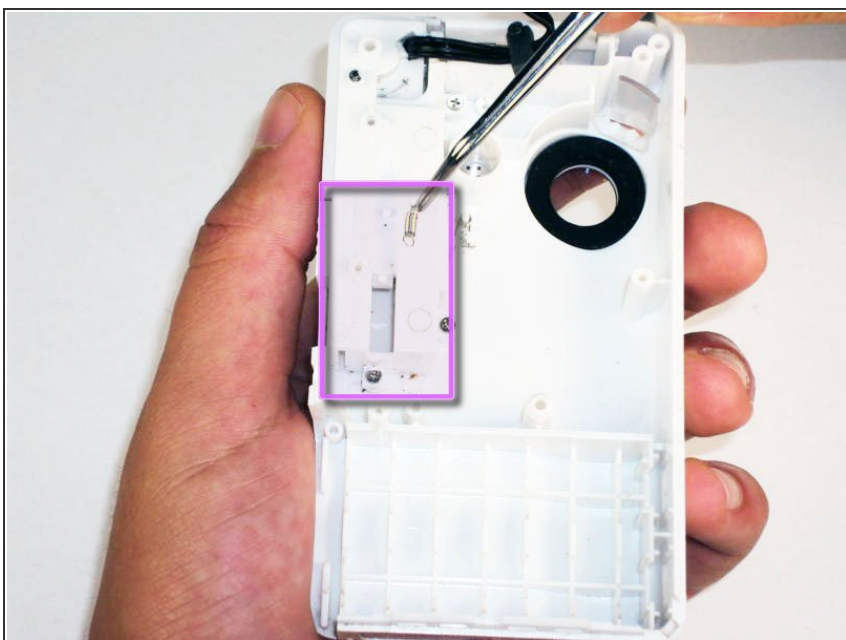
- Remove black 3mm screw that secures wire to outer shell with #00 Phillips screwdriver.

Step 11



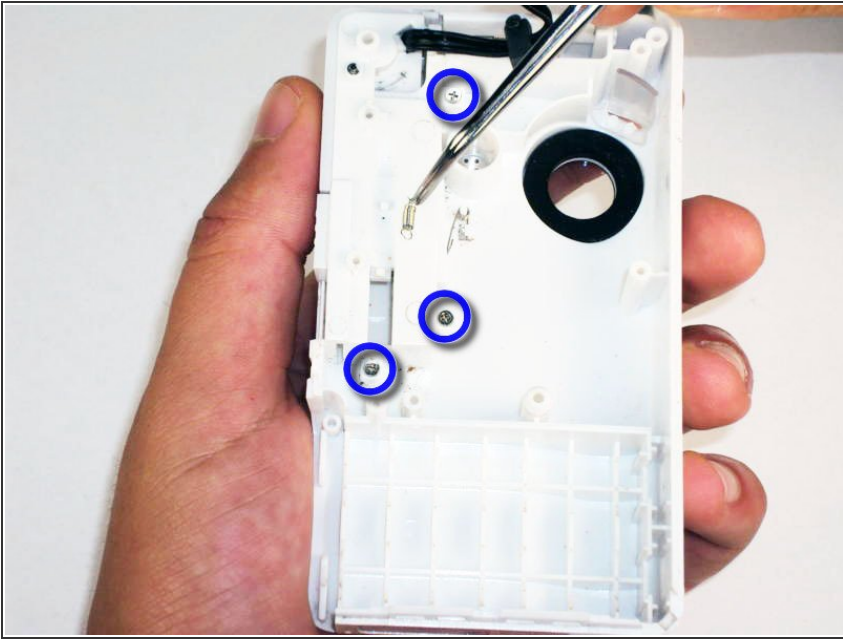
- Lift wire out of the outer shell slot.
- The wire mount should stay attached to the wire.

Step 12



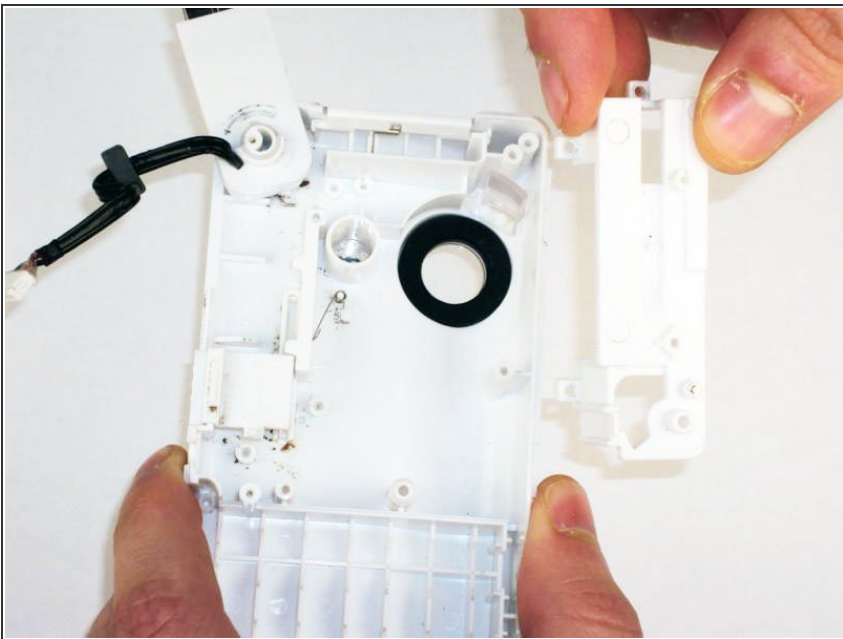
- Use tweezers to remove the spring that holds the port door shut.
- ⚠ Make sure the spring is firmly grasped by the tweezers so that it does not shoot off of the case.

Step 13



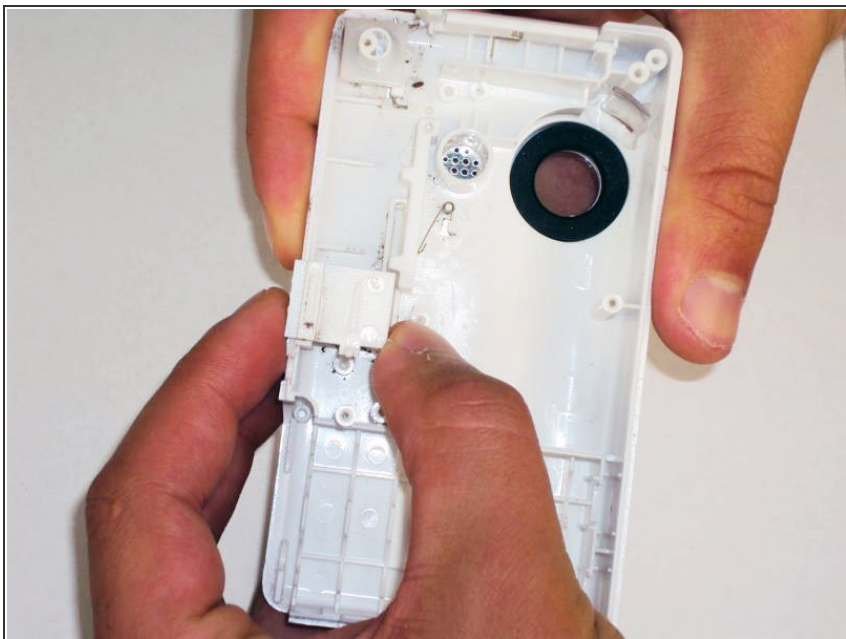
- Remove the 3 screws securing USB port cover to the outer case with the #00 Phillips screwdriver.

Step 14



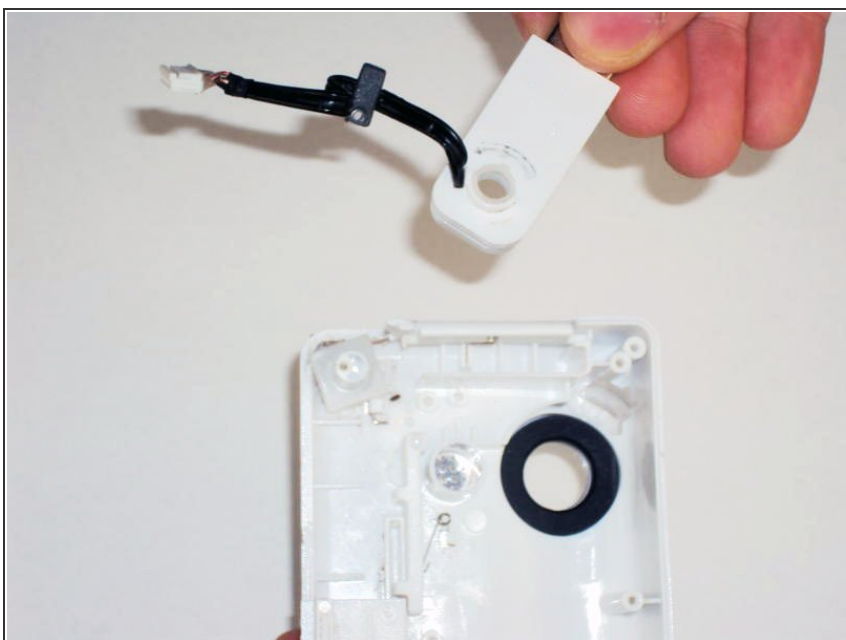
- Remove the USB port cover.

Step 15



- Remove the USB slider.

Step 16



- Lift out the USB port slowly.
 - ⚠ Since the hinge is spring loaded, be careful that no pieces fall out when the port is lifted.

To reassemble your device, follow these instructions in reverse order.