



# Toshiba Satellite L305D-S5950 Hard Disk Drive Replacement

Remove the hard disk drive from your Toshiba Satellite L305D-S5950.

Written By: Ricky Baker



---

# INTRODUCTION

This guide will cover the access to and removal of the hard disk drive for replacement.

---



## TOOLS:

- [Phillips #00 Screwdriver](#) (1)
  - [Spudger](#) (1)
-



## Step 1 — Battery



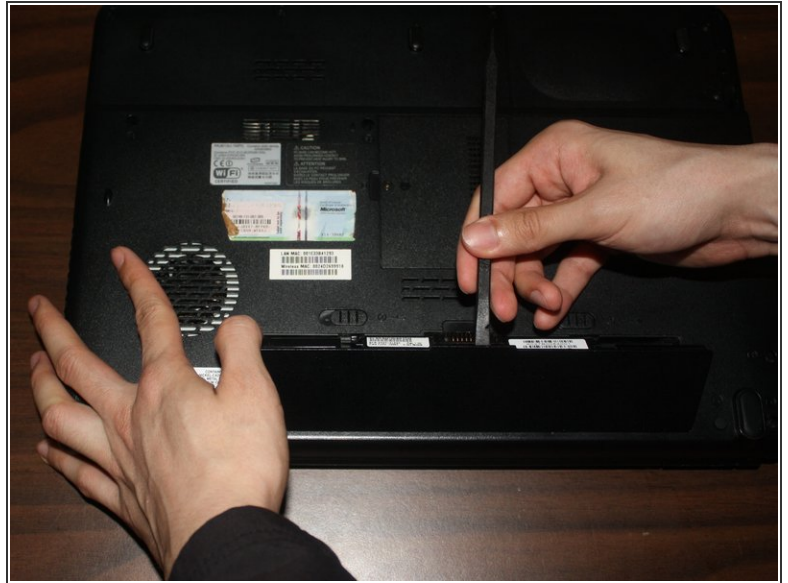
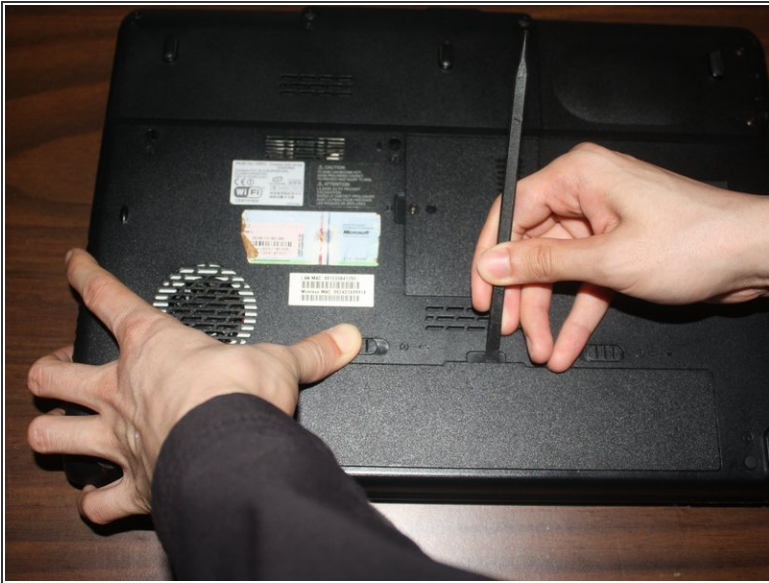
- Locate the two sliding battery locks on the underside of the laptop.

## Step 2



- Locate the right battery lock and slide it to the right.

### Step 3



- While holding the left battery lock to the left, lift up the battery using the tab located on the top center of the battery.

### Step 4



- Remove the battery from the laptop.



## Step 5 — Hard Disk Drive



- Unscrew the screws enough to remove the top cover.

## Step 6



- Remove the cover by lifting the right side up at an angle before removing the entire cover.

## Step 7



- Remove the hard drive from the SATA slot by tugging lightly on the ribbon cable to the right.

## Step 8



- To separate the hard drive from the caddy, unscrew the two screws.

To reassemble your device, follow these instructions in reverse order.