



Refresh, Reset, Start-up repair from USB recovery media

If you forgot your password, or you want to...

Written By: ZFix

Refresh, Reset, Start-up repair from USB recovery

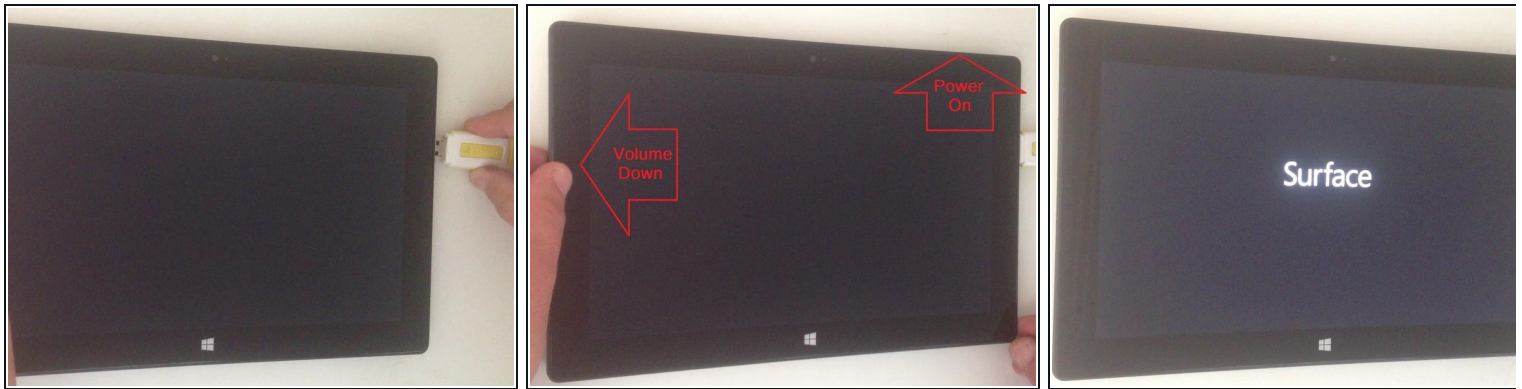


INTRODUCTION

If you forgot your password, or you want to delete all data, or you have problem with power on the tablet...

[video: https://www.youtube.com/watch?v=aoVvIGlwkuw&feature=youtu.be&ab_channel=ZFix]

Step 1 — Refresh, Reset, Start-up repair from USB recovery media



- - Make Surface turned off and plugged in.
- - Insert the USB recovery drive into the USB port.
- - Press and hold the Volume Down button, press the Power button in a short time.
- - When the Surface logo appears, release the Volume button.
- - Select the language and keyboard layout.

Step 2



- **Now you are in the Advanced Startup Options menu. You can choose from:**
- - Refresh your PC
- - Reset your PC
- **...or from Advanced options menu:**
- - Start-up repair
- - Command prompt

To reassemble your device, follow these instructions in reverse order.