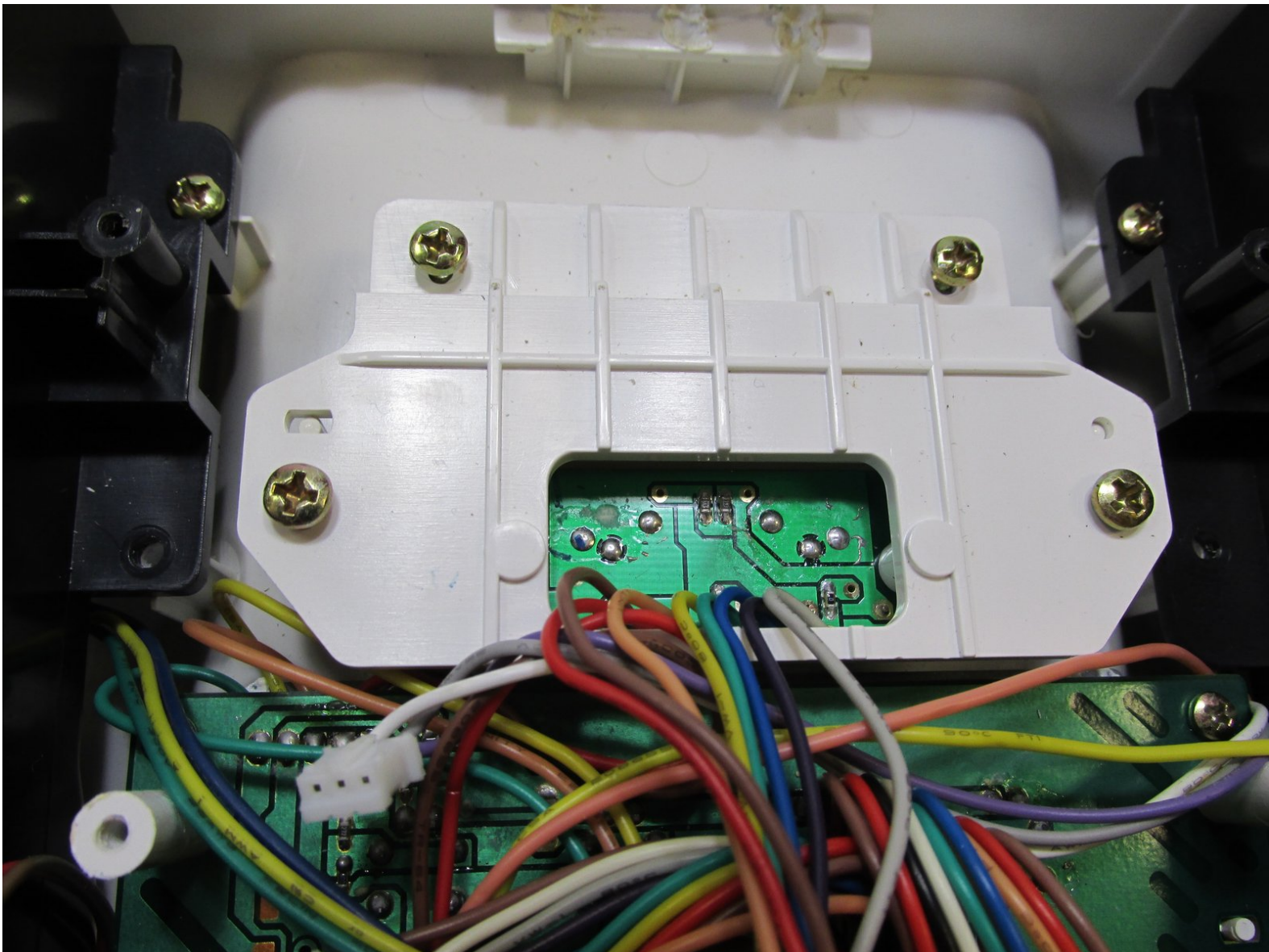




iHome iH5 Charging Dock Replacement

How to properly remove and replace the iHome iH5 charging

Written By: Dustin Lamb



INTRODUCTION

This is a replacement guide for the charging dock on the iHome iH5.



TOOLS:

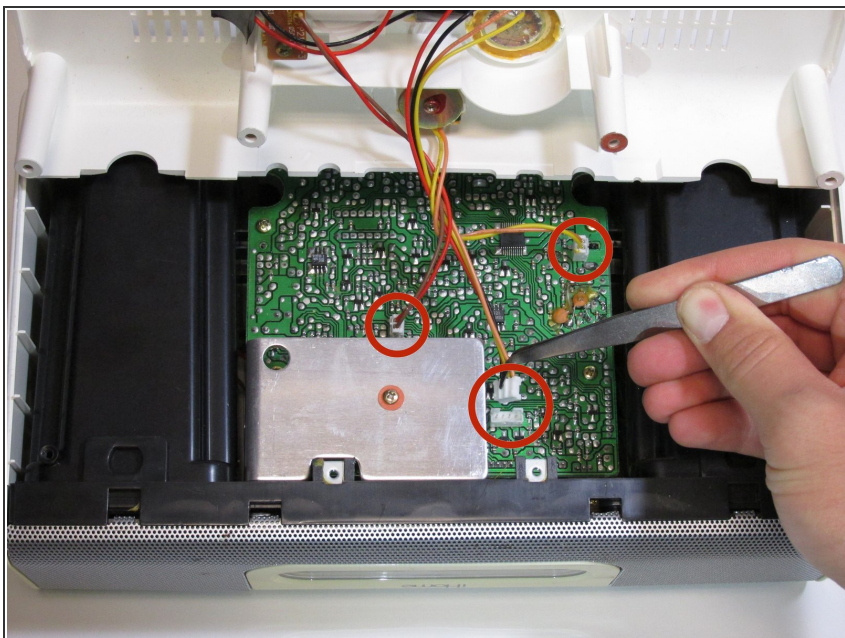
- [Phillips #2 Screwdriver](#) (1)
 - [Tweezers](#) (1)
-

Step 1 — Charging Dock



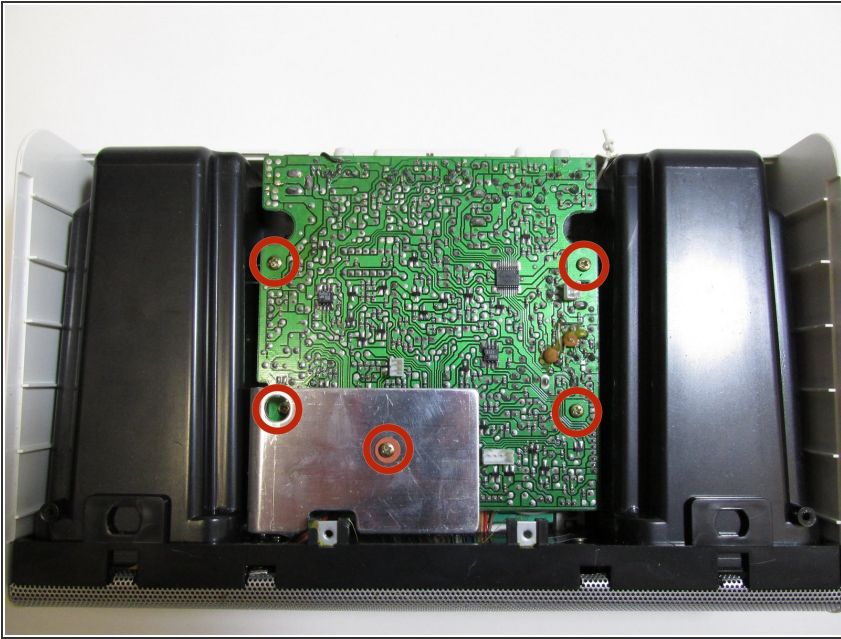
- Remove the eight 5/16 inch screws with a #2 Phillips screwdriver.

Step 2



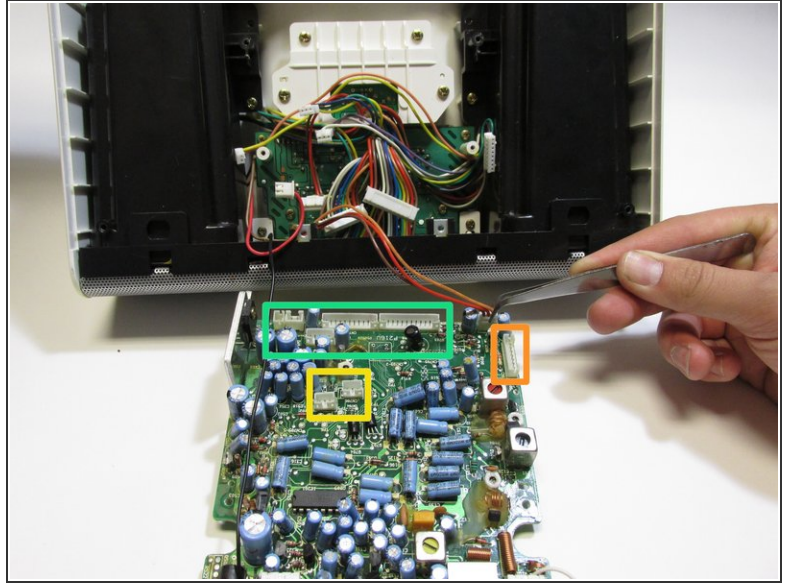
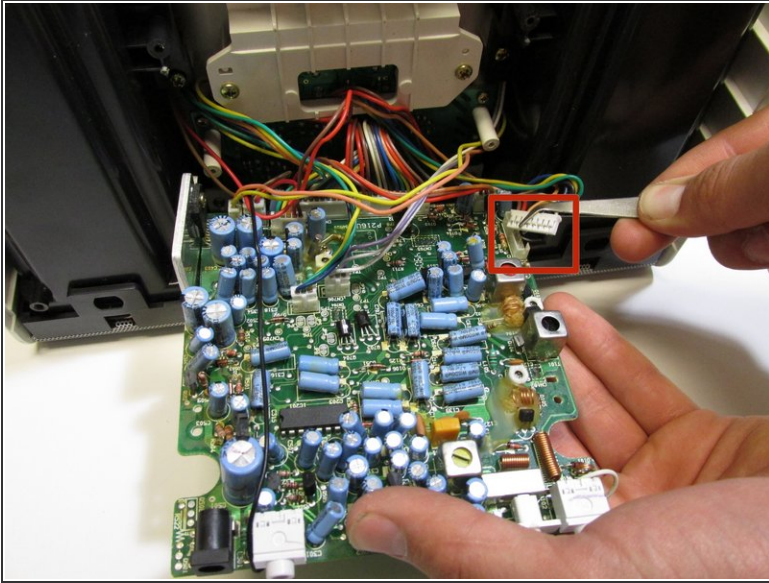
- Use tweezers to unplug the three wires connected to the circuit board. If the wires are tight pliers might work better.

Step 3



- Remove the five 5/16 inch screws from the circuit board.

Step 4

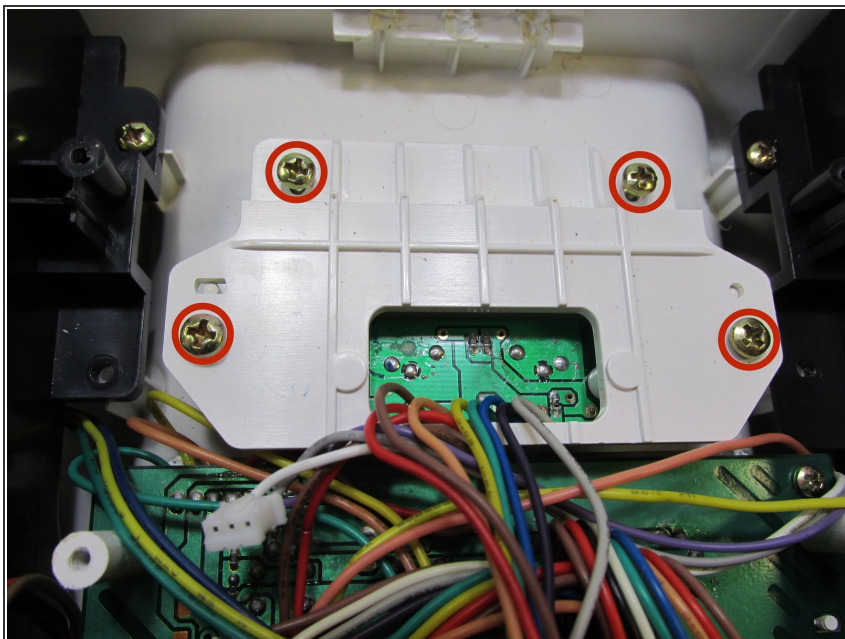


- Flip the circuit board over.

⚠ There are capacitors all over the back side of the board. Be careful not to touch these capacitors (blue cylinders) as they can discharge—giving you a shock.

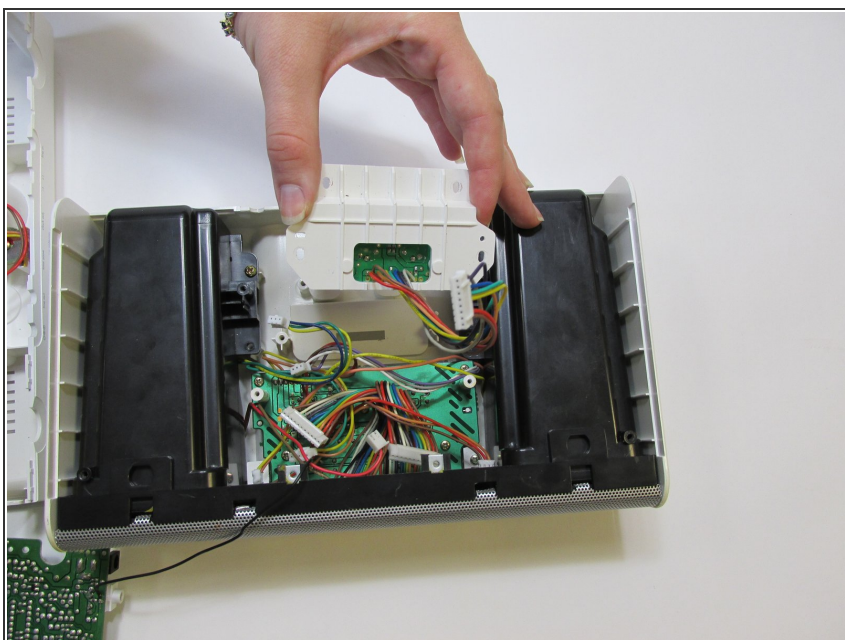
- Unplug the eight wires attached to the circuit board with tweezers. If the wires are tight pliers might work better.
 - There is one wire in the orange box.
 - There are two wires in the yellow box.
 - There are five wires in the green box.

Step 5



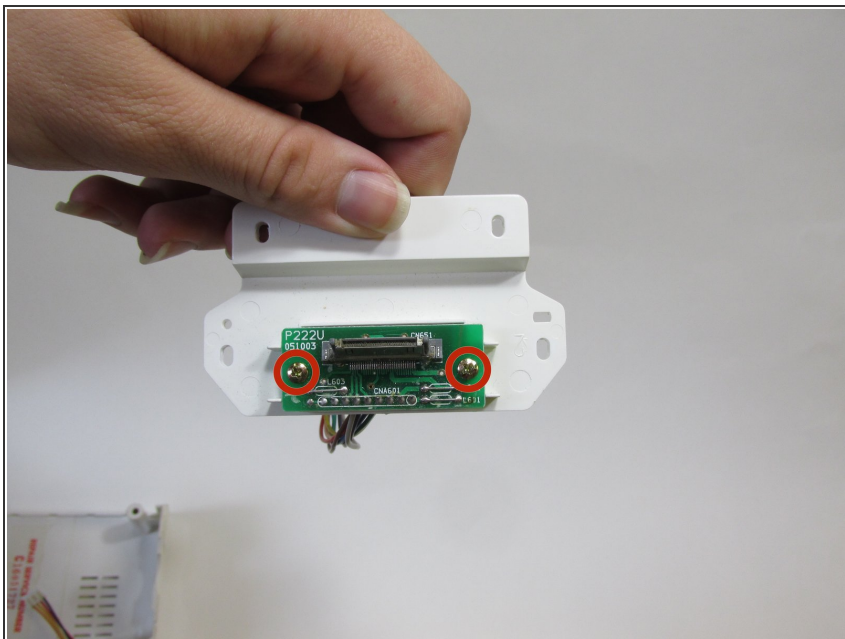
- Remove the following four screws securing the iHome iH5 charging dock.
- Use a #2 Phillips screwdriver to remove the four screws.

Step 6



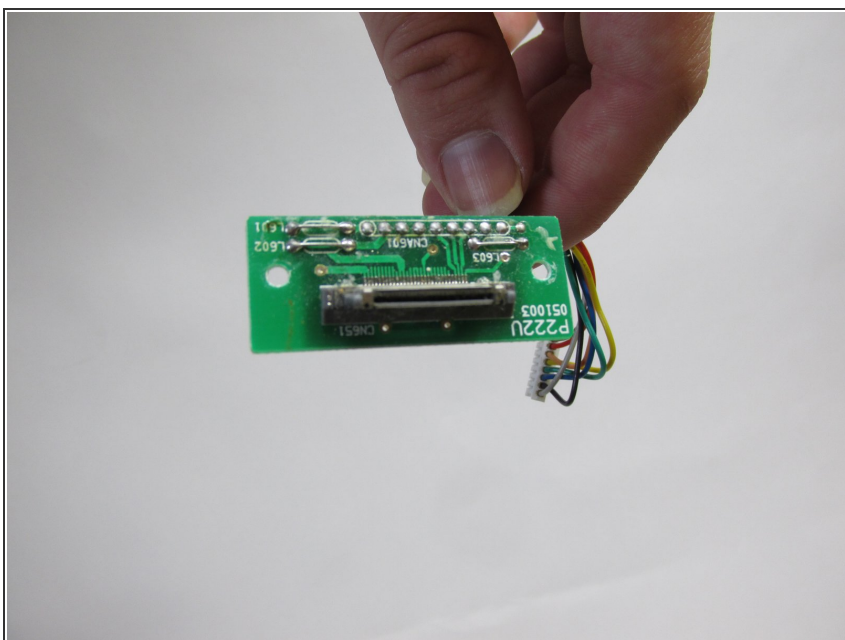
- Gently remove the charging dock from the iHome iH5 by pulling it up.

Step 7



- Remove the final screws connecting the iH5 charging dock to the plastic holding platform
- Use a #2 Phillips screwdriver to remove the 3/8 inch screws.

Step 8



- Replace the old iH5 charging dock with new iH5 charging dock.

To reassemble your device, follow these instructions in reverse order.