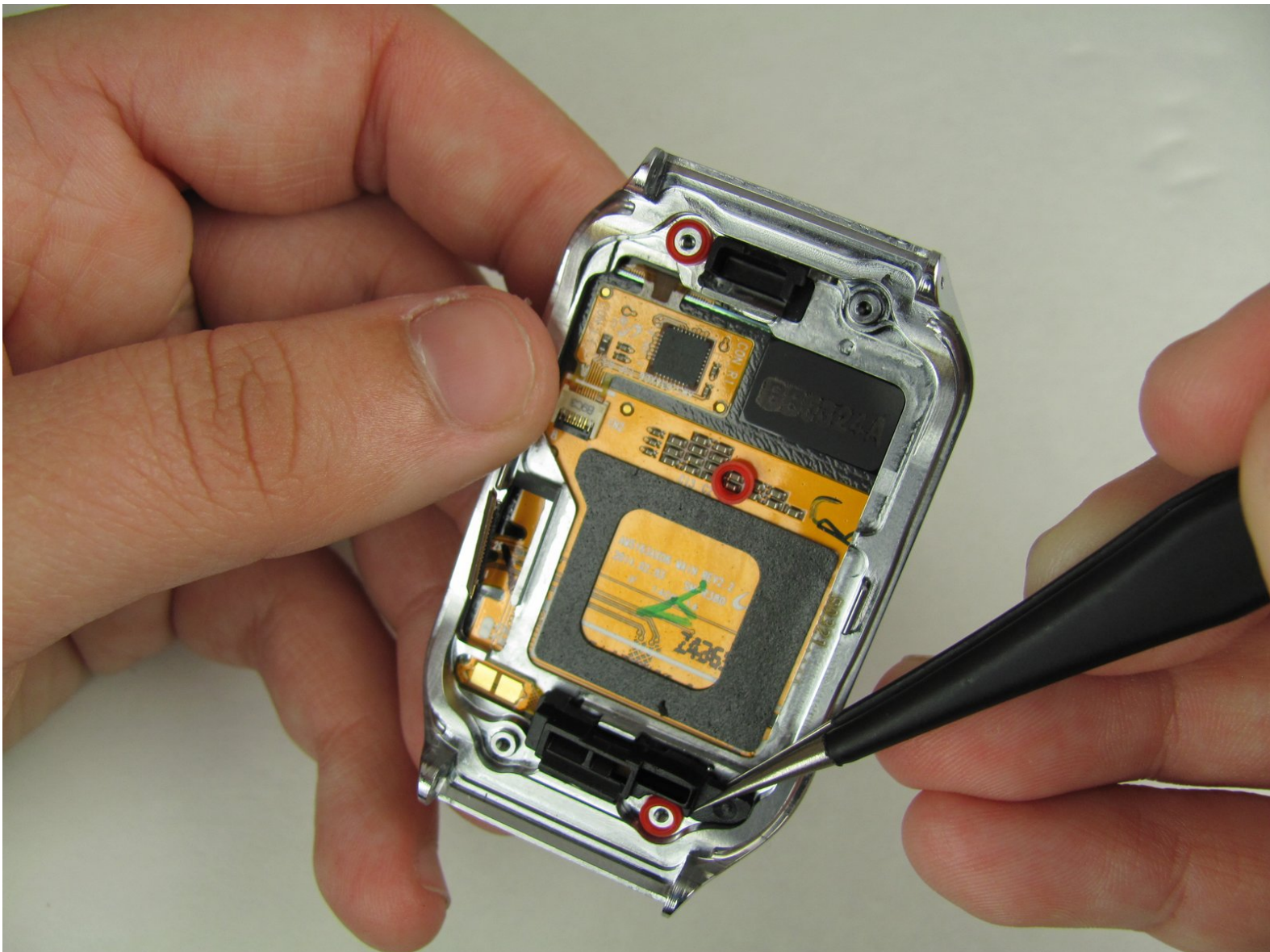




Samsung Gear 2 Home Button Replacement

Use this repair guide to replace the home button in the Samsung Gear 2.

Written By: Allison Michel



INTRODUCTION

This guide will walk you through the process of replacing a broken home button in a Samsung Gear 2.



TOOLS:

- [Spudger](#) (2)
 - [T5 Torx Screwdriver](#) (1)
 - [Tweezers](#) (1)
-

Step 1 — Front half and Back half



 Before disassembling your Gear, be sure it is powered off.

- To remove each strap, locate the metal latches on both sides of the back of the Gear.
- Press down on the metal latch while pulling the strap away from the Gear until it is completely off.

Step 2



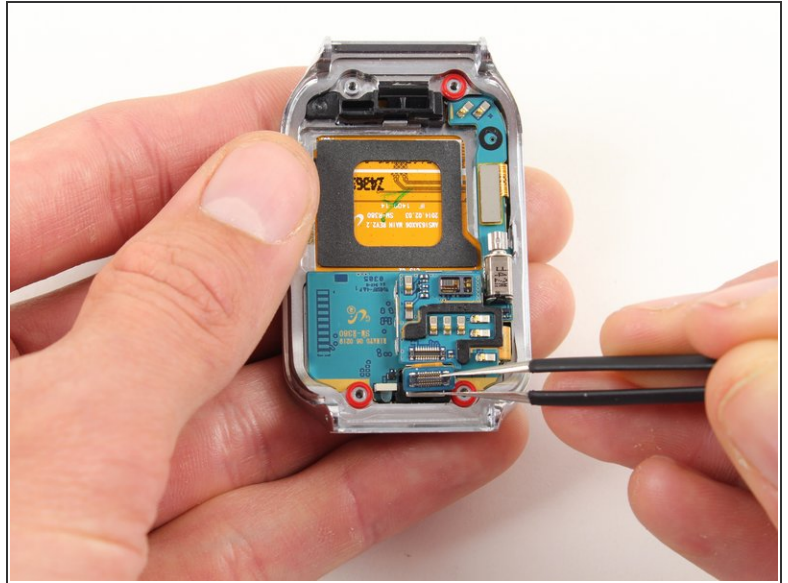
- Remove the four 4.0 mm screws on the back of the Gear using a T5 Torx Screwdriver.

Step 3



- Firmly holding the Gear, insert the flat side of the spudger at an angle to pry the back casing off of the device. Move the spudger along the sides of the Gear to completely detach the back and front components.
- Pry the device open from the other side also if it does not fully disassemble from one side.

Step 4 — Camera



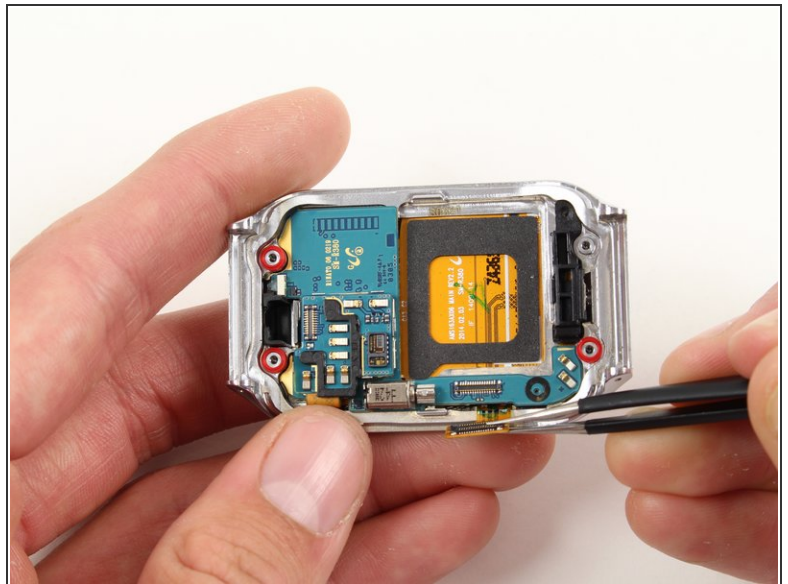
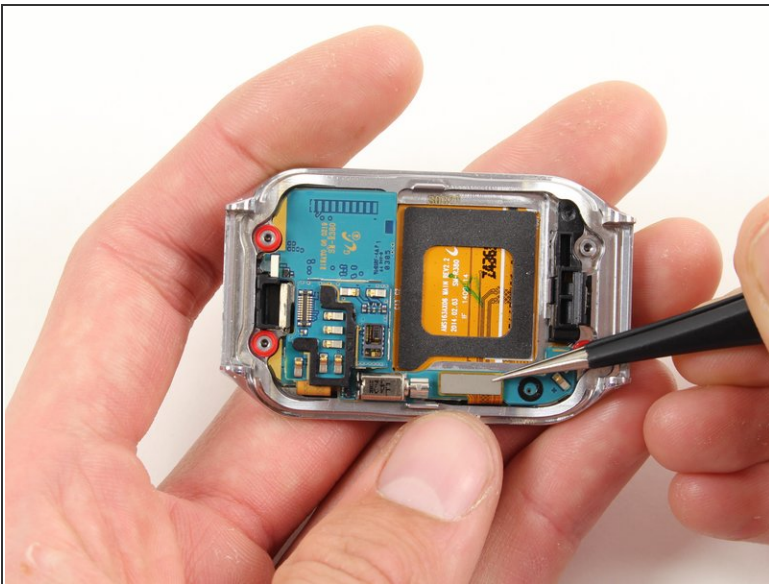
- Locate the rectangular metal connector that attaches the camera to the Gear.
 - Use tweezers to gently lift and detach the metal plate of the connector.
- ✦ When reassembling the Gear, reattach the camera connector by carefully aligning the metal plate and its pins to its original placement. Make sure it snaps in place to avoid improper connections and possible damage.

Step 5



- Use tweezers to carefully lift the camera from its slot out of the case.

Step 6 — Motherboard



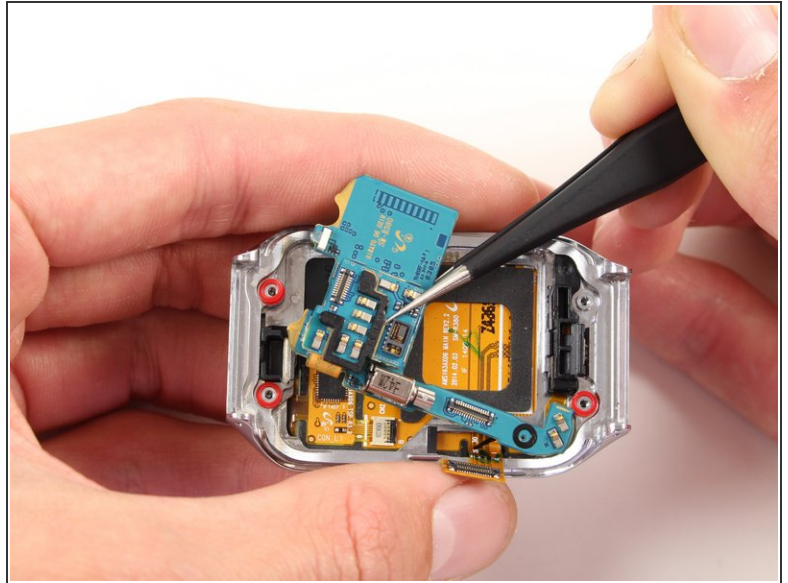
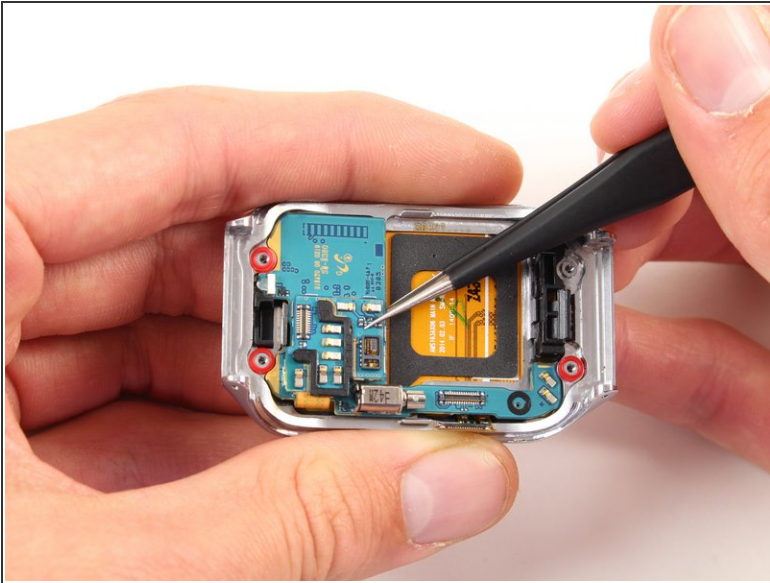
- Use tweezers to grab and then gently lift up the metal plate of the safety belt.

⚠ When removing the metal plate, be sure to remove them carefully as to not rip the orange tape that is attached to them.

🔧 During reassembly, be sure to line up the pins of the metal plate in order to reattach correctly.

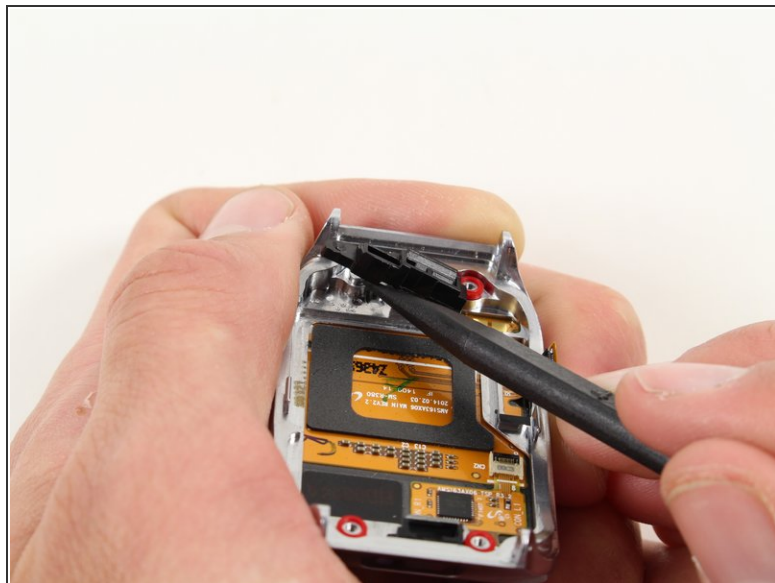
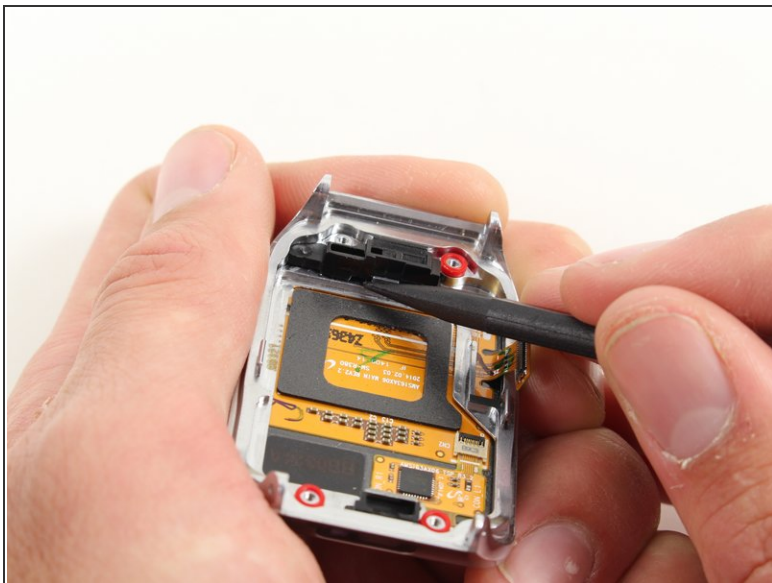
This document was generated on 2020-11-21 02:45:43 AM (MST).

Step 7



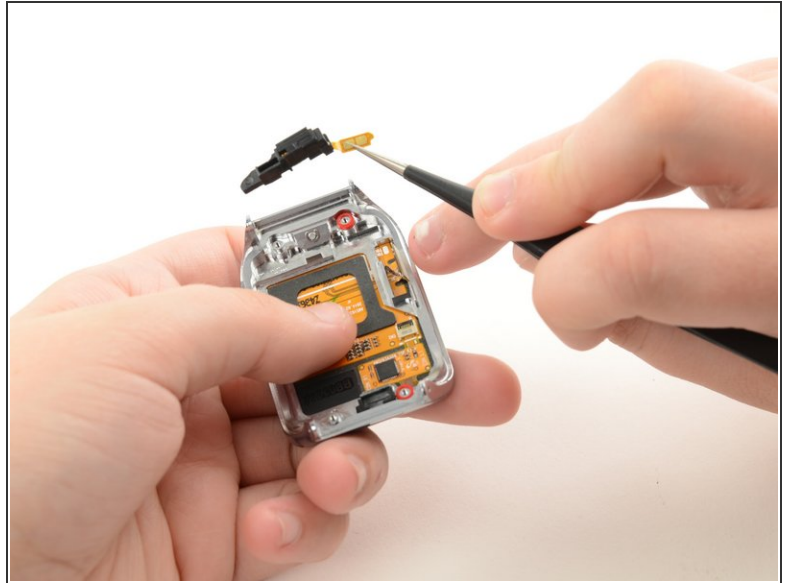
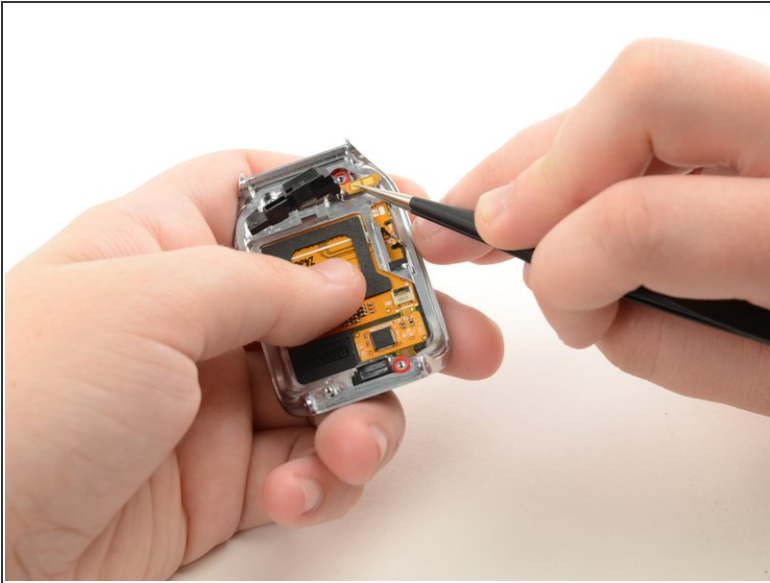
- Once the safety belt is removed, use tweezers to take the motherboard out of the Gear 2.

Step 8 — Home Button



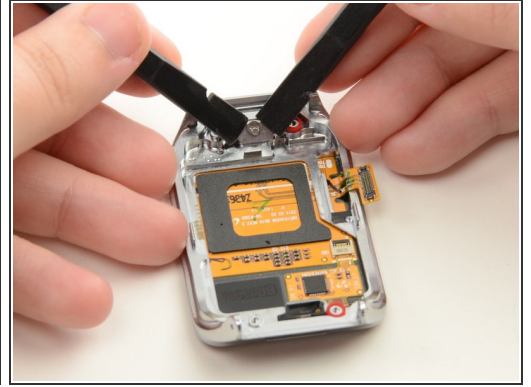
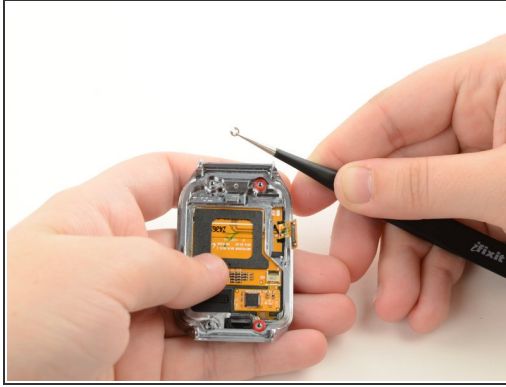
- Insert the spudger into the small opening underneath the black home button assembly and pry it off the casing.
 - Lift up to detach the black assembly.
- ✦ Be sure not to rip the orange tape that keeps the home button assembly attached to the device.

Step 9



- Use tweezers to grab the orange connector that is attached to side the home button assembly and lift to remove it from its adhesive.

Step 10



- Using two spudgers, place the pointed tips at each end of the U-shaped snap ring located under where the home button assembly was.
- Remove the snap ring by pushing down with both pointed objects on each side of the ring simultaneously, it should pop off.
- ⓘ Be careful not to lose the snap ring because it can be lost easily.
- ✦ To replace the snap ring, rest it above the home button peg using tweezers so the open side rests on the peg. Then use the flat end of the spudger and push firmly down on the snap ring to snap it back onto the peg as shown in the last picture.

Step 11



- Use either the tweezers or the spudger to push the button peg out through the hole.

To reassemble your device, follow these instructions in reverse order.