



Dell Inspiron 1545 Computer Processing Unit Replacement

This guide will be utilized mainly if your CPU...

Written By: Nathan Lemay



INTRODUCTION

This guide will be utilized mainly if your CPU has gone bad and your laptop is essentially nonfunctional.



TOOLS:

Phillips #1 Screwdriver (1)
6-in-1 Screwdriver (1)



PARTS:

Dell Inspiron 1545 (PP41L) CPU (1)

Step 1 — Battery



- ✦ Before attempting to remove the battery ensure that the laptop is disconnected from all power sources and turned off.
- Turn the laptop over to its back.

Step 2



- Slide the release latch while simultaneously pulling backwards on the battery.

Step 3



- Slide the battery out of the battery bay.

Step 4 — Base Cover



- Unscrew the four screws (3mm Phillips #1) that hold the base cover in place.
- ⓘ The top 3 screws are "captive" (held in by a retaining ring) and will not come out.

Step 5



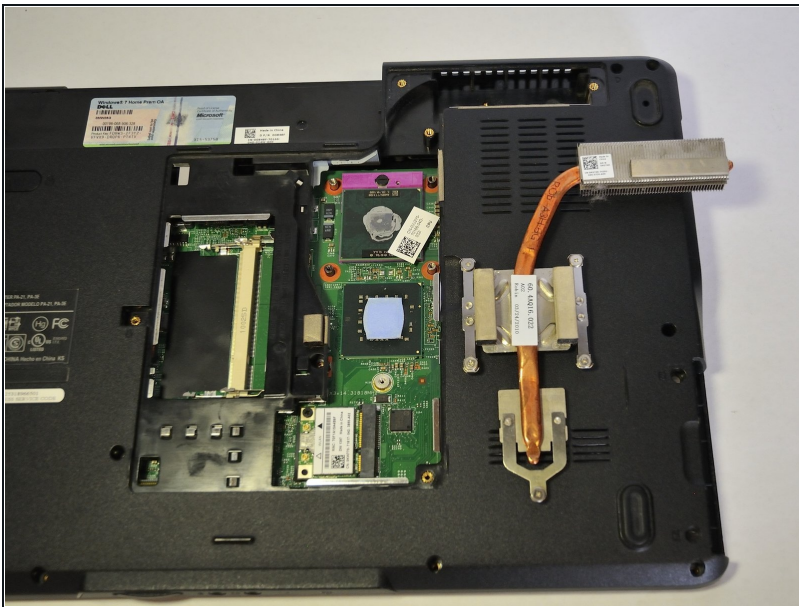
- Carefully lift the base cover vertically away from the laptop.

Step 6 — CPU Heat Sink



- Loosen the 5 screws (4mm, Phillips #1) that secure the CPU Heat Sink to the motherboard.
- ⓘ These screws are held in place by a washer so you should not be able to completely remove the screws.

Step 7



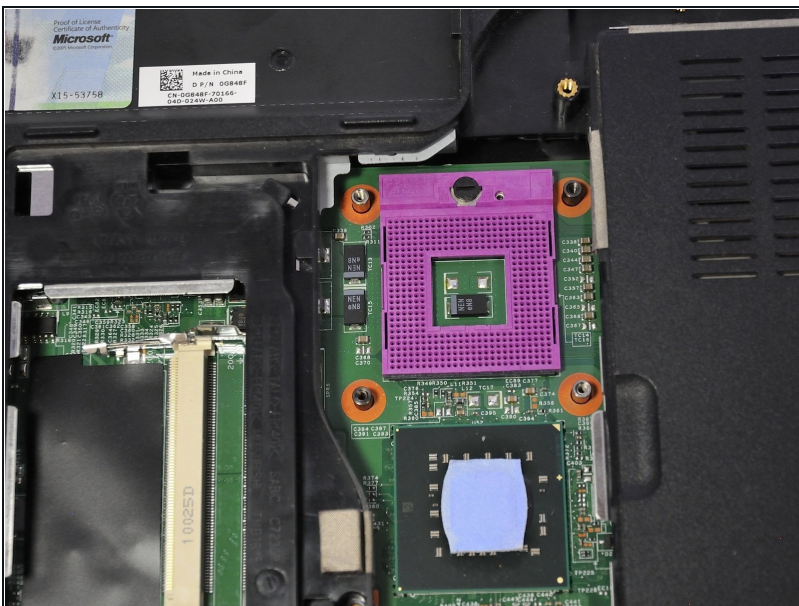
- Pull up on the Heat Sink unit to remove it.

Step 8 — Computer Processing Unit



- Using a flathead screwdriver, rotate the locking mechanism counterclockwise to the unlocked position.

Step 9



⚠ The CPU is very fragile and has thin pins.

- Remove the CPU by pulling straight upward and away from the laptop.

To reassemble your device, follow these instructions in reverse order.