



HP Slate 7 4601 Charging Port Replacement

You will be able to replace the charging port for complete charging functionality.

Written By: Raj Parekh



INTRODUCTION

One of the most frustrating things that can happen to your tablet is the inability for it to charge; the tablet is practically useless if you're unable to charge it. This guide will breakdown all the necessary steps to ensure that you're able to charge life into your tablet. In this guide, you will be removing the following:

1. Back Cover
2. Battery
3. Charging Port

Prepare your required tools, a new charging port for your tablet, and set aside about 10 to 20 minutes to delve into the inner workings of your HP Slate.

TOOLS:

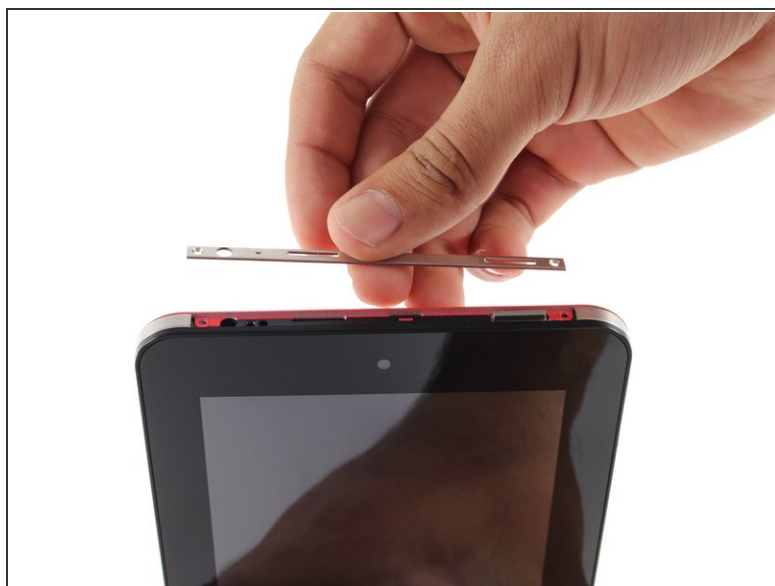
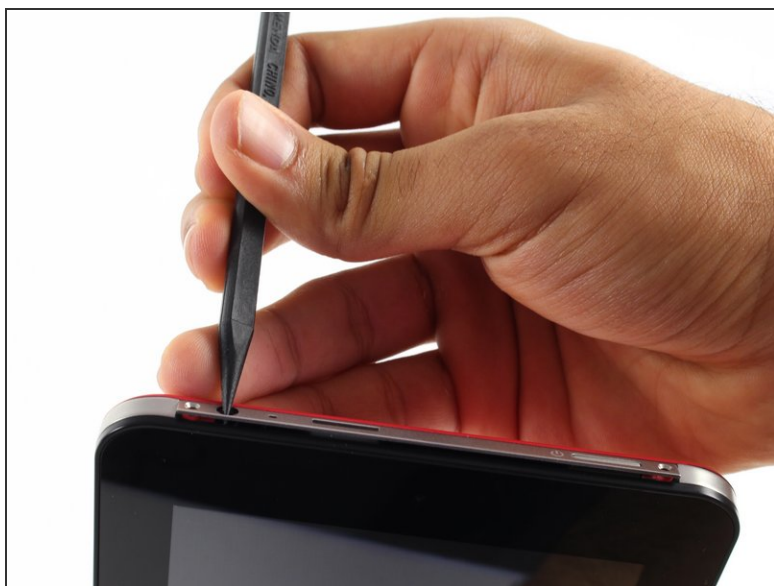
- [Phillips #00 Screwdriver](#) (1)
 - [Spudger](#) (1)
 - [T4 Torx Screwdriver](#) (1)
-

Step 1 — Battery



- Begin your replacement by using a T3 or T4 Torx screwdriver.
 - Remove the two 1.4mm x 3mm Torx Head screws at the top of the device.

Step 2



- With the pointed end of the spudger, remove the thin metal band.
 - ⓘ It is easiest to remove the metal band through the headphone opening.

Step 3



- Using the flat end of the spudger, pry back the rear plastic cover.
- ❗ As you work your way around the edge, several "pop" noises will be made. These noises are caused by the plastic clips coming undone.

Step 4



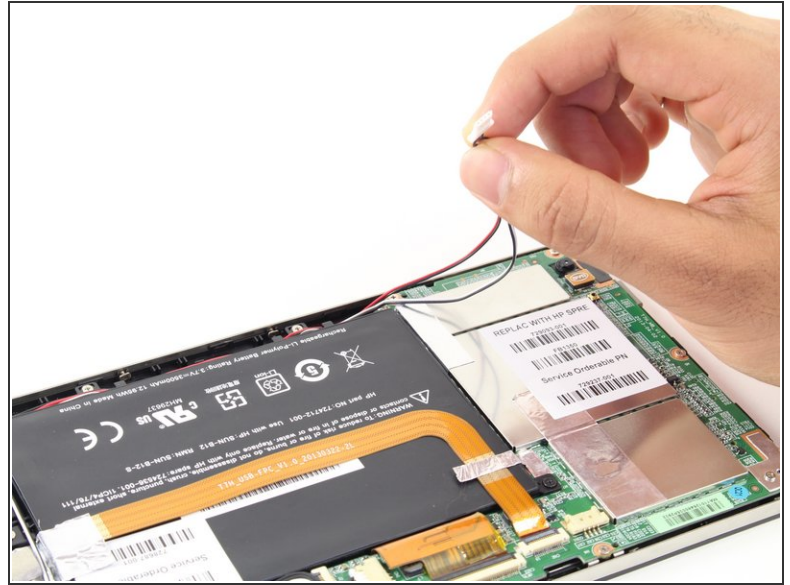
- Remove the rear cover.

Step 5



- Locate and remove the yellow tape covering the red and white speaker wires.

Step 6



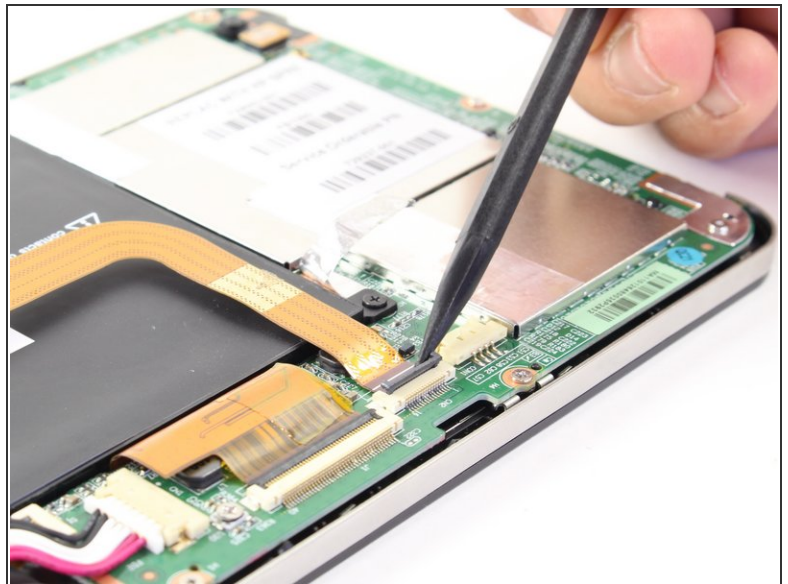
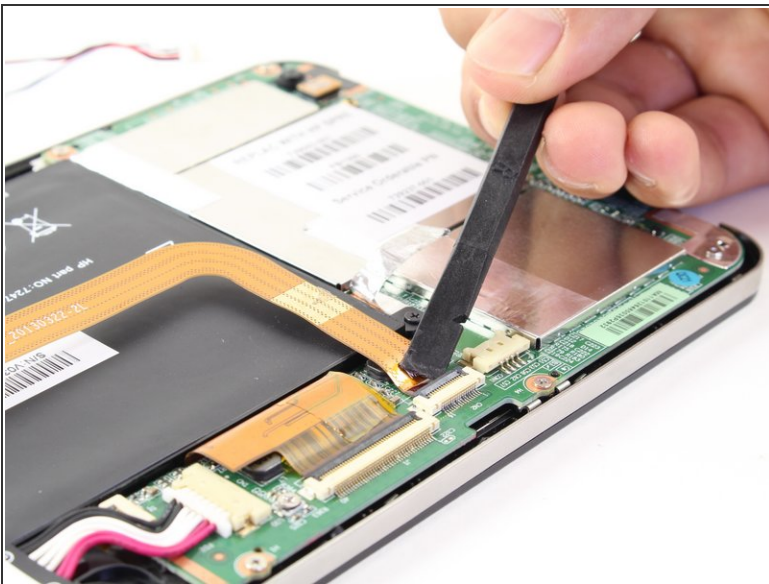
- Using the pointed end of the spudger, push both sides of the speaker wire connector out of its base.
- ⓘ Push the same amount on both sides of the connector to avoid jamming or twisting its metal pins.
- ⚠ Do not yank or pull on the speaker wires, since they are fragile. Only push on the white connector.

Step 7



- Gently pull back the foil covering the gold charging port ribbon.

Step 8



- Using the flat end of the spudger, lift up the black panel covering the charging port connector.
- Gently slide the charging port ribbon out from its housing.
- ❗ It may be easier to use the pointed end of the spudger than your fingers.

Step 9



- Lift gold charging strip away from the battery.

Step 10



- Push the white battery connector out of its housing using the pointed end of the spudger.

Step 11



- Using the #00 Phillips Head screwdriver, remove the 5 screws holding the battery in place.
 - The four 1.75mm x 3mm silver Phillips Head screws circled in red are interchangeable.
 - The black 1.75mm x 4mm Phillips Head screw **must** go back to the same spot during reassembly.

Step 12



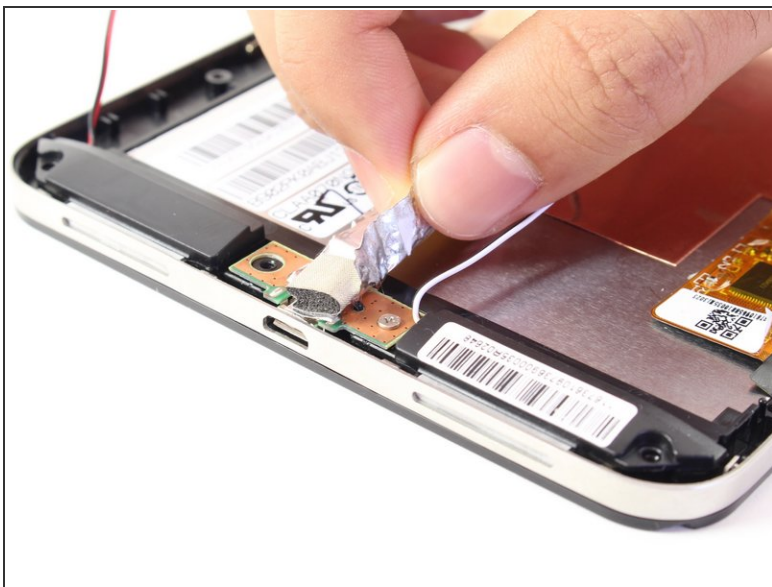
- Lift battery out of its place and set aside.

Step 13 — Charging Port



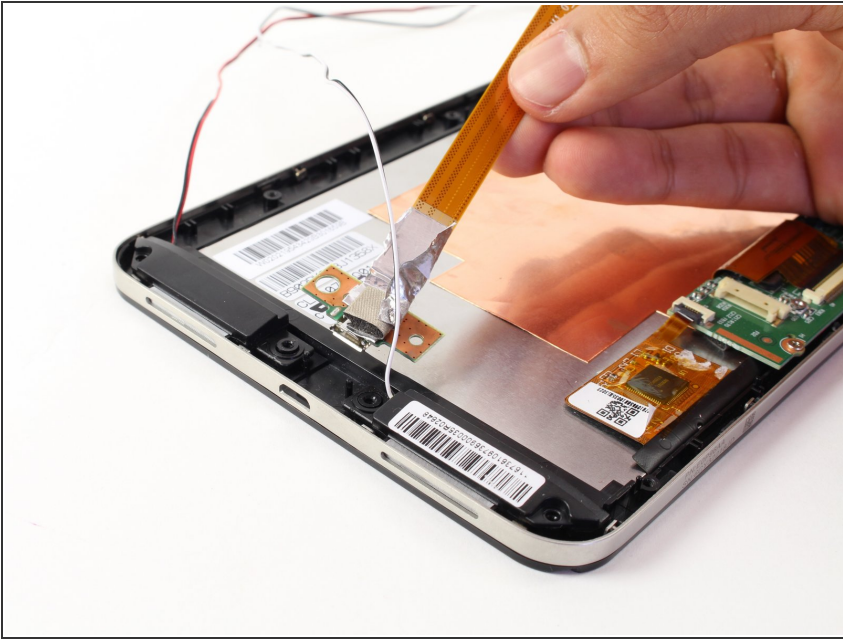
- To free the speaker assembly, you will need a #00 Phillips Head screwdriver.
- Remove the two 1.75mm x 3mm Phillips Head screws from the speaker assembly.

Step 14



- Pull back the foil overlapping the charging port to reveal another 1.75mm x 3mm Phillips Head screw.
- Remove the screw with a #00 Phillips Head screwdriver.

Step 15



- Lift the charging port and set it aside.

To reassemble your device, follow these instructions in reverse order.