



# Toshiba Satellite M45 Display Replacement

How to replace the display on a Toshiba Satellite M45 laptop.

Written By: Aryn Pauly



---

## INTRODUCTION

This guide will demonstrate how to dismantle and replace components of your computers display (screen).

---

### TOOLS:

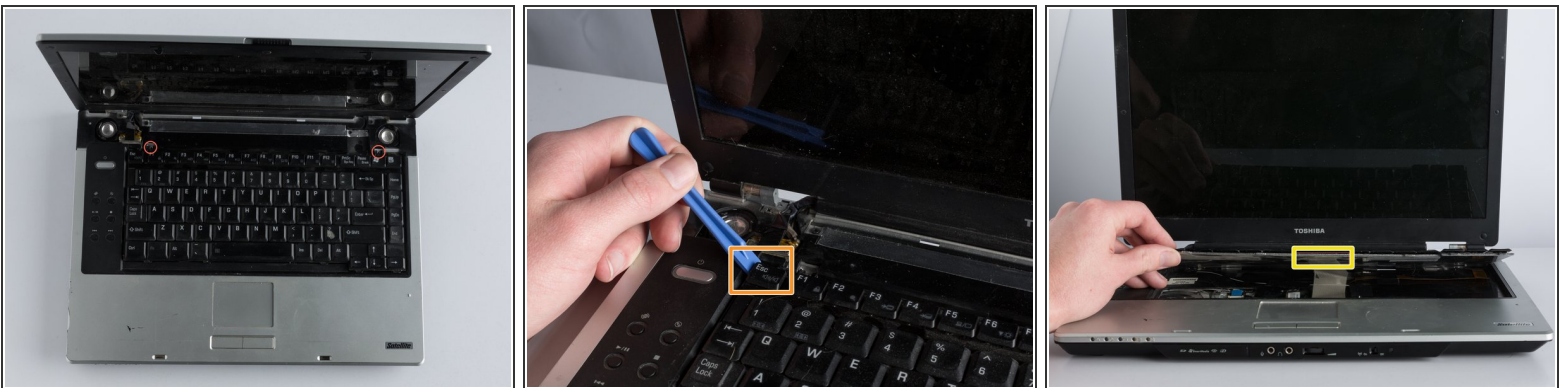
- [Phillips #1 Screwdriver](#) (1)
  - [Phillips #00 Screwdriver](#) (1)
  - [iFixit Opening Tool](#) (1)
-

## Step 1 — Keyboard



- Carefully use the blue iFixit Opening Tool to pry the panel above the keyboard from the left and right side.
- Push back the screen until it is flat with the laptop.
- Gently remove the clips that connect the panel to the screen.

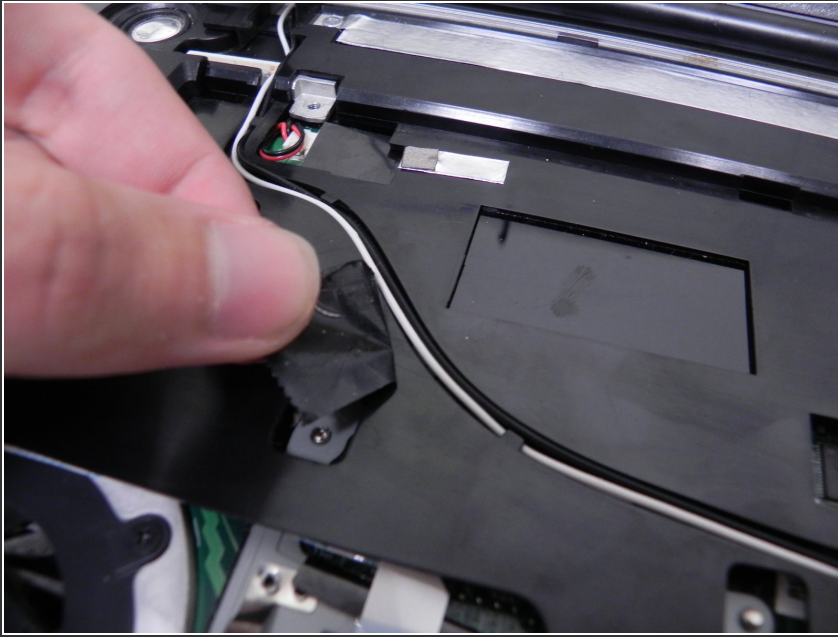
## Step 2



- Use the Phillips #1 screwdriver to remove the two screws.
- Gently pry the keyboard from the laptop using the blue iFixit opening tool.
- Slowly lift the keyboard away from the laptop.
  - Remove the ribbon that connects to the laptop.

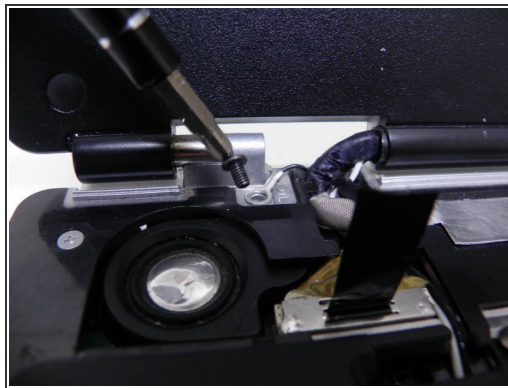
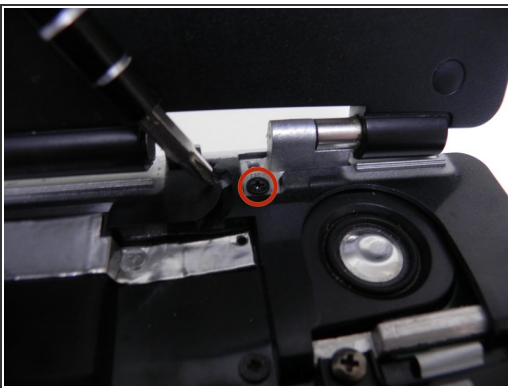
**⚠ Ensure you remove the keyboard slowly to avoid damaging the ribbon cable.**

## Step 3 — Display



- Remove the 2-3 pieces of black electrical tape covering the black-and-white antenna cable.
- Close the display, flip the laptop over, and disconnect the black-and-white antenna cables from the Wi-Fi card.
- Flip the laptop back over and open the display.

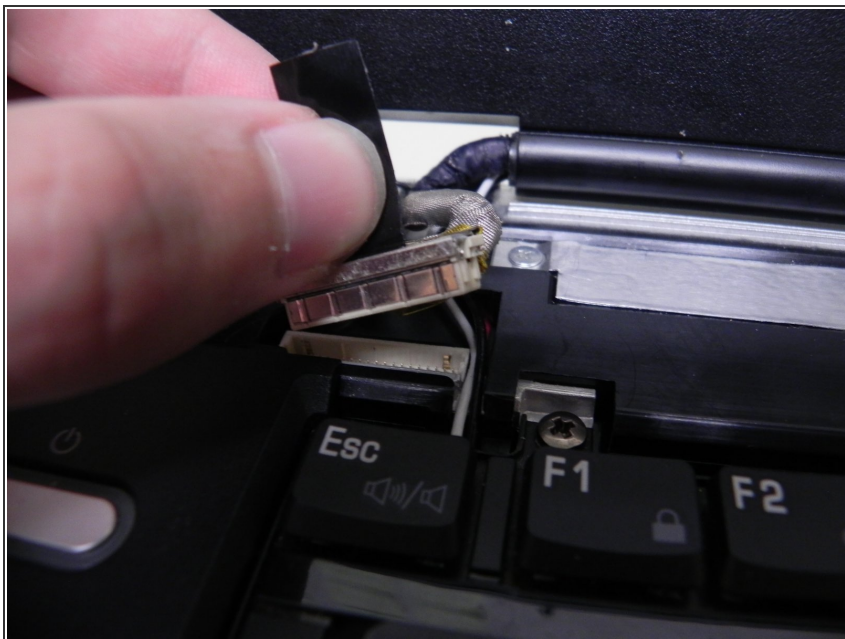
## Step 4



- Remove the two Phillips #1 screws securing the display hinges.
- ⓘ It is recommended to keep the screws in a small cup so that you don't lose them.
- Remove the four Phillips #1 screws on the back of the laptop.



## Step 5



- Gently pull up on the display's video connector to remove it.
- Remove the black-and-white antenna cable from the groove.
- Your display can now be removed.

To reassemble your device, follow these instructions in reverse order.