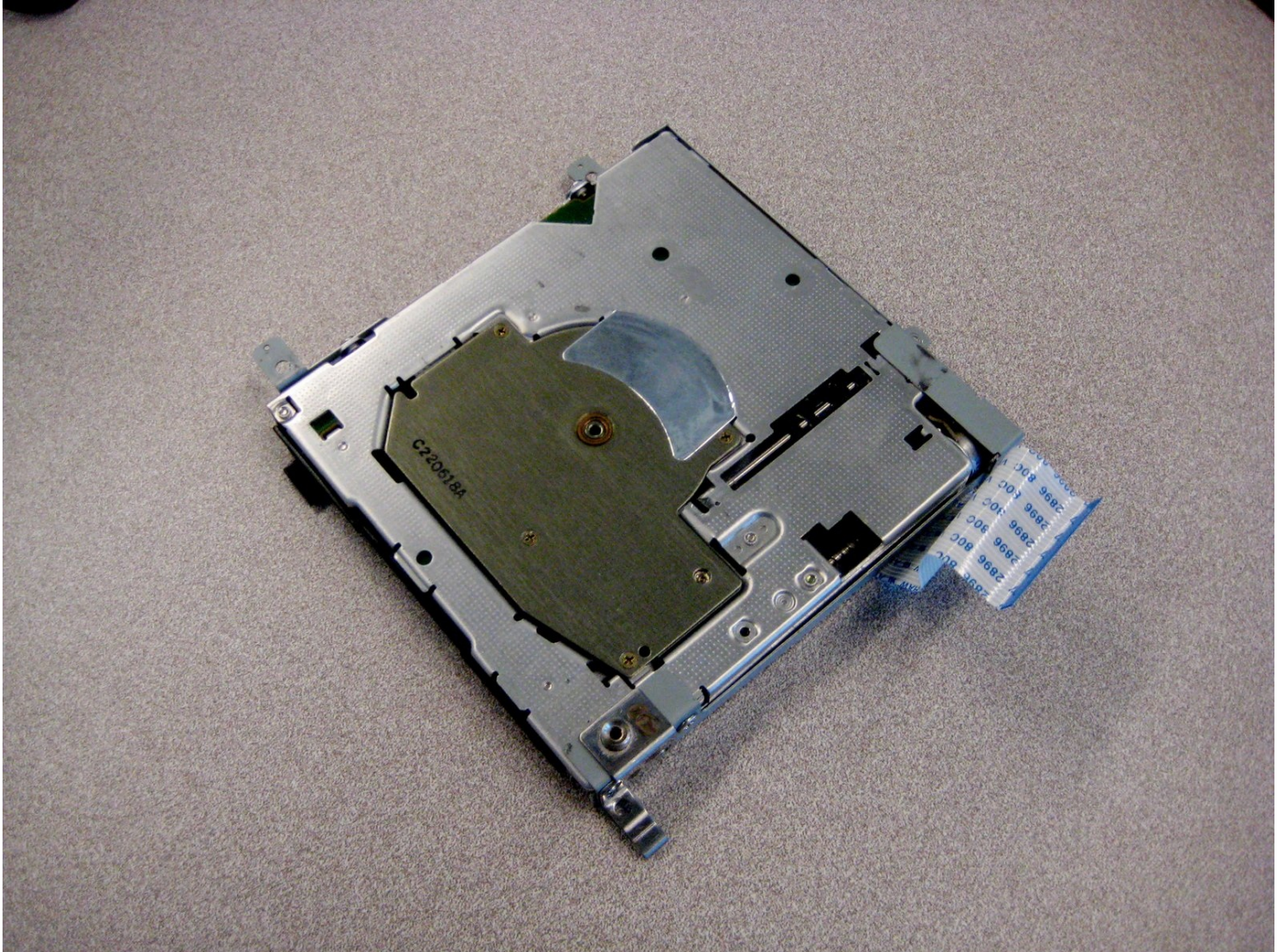




Compaq Evo N1000v Floppy Drive Replacement

A guide on how to remove the Floppy Drive.

Written By: Alex Hernandez



INTRODUCTION

A guide on how to remove the **Floppy Drive**.

TOOLS:

Phillips #00 Screwdriver (1)

Spudger (1)

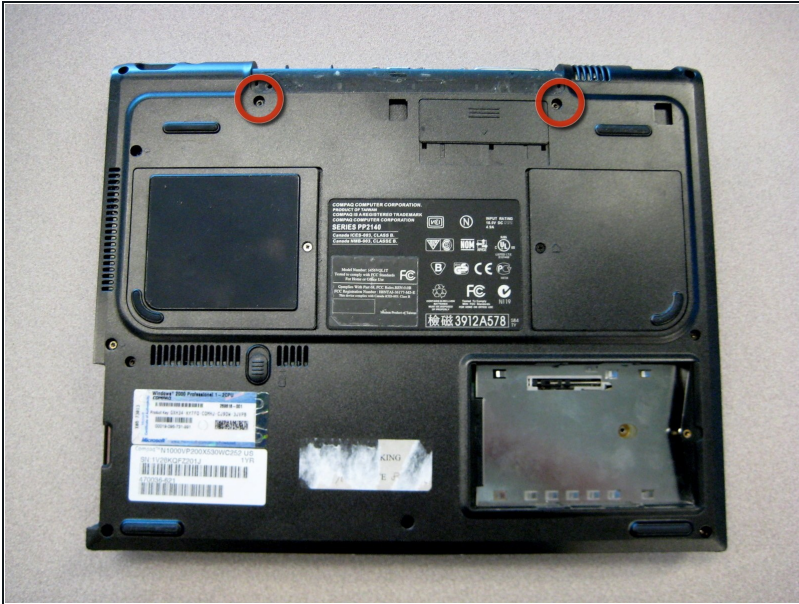
TR8 Torx Security Screwdriver (1)

Step 1 — LED Cover



- Flip the laptop over with the rear panel facing forward.

Step 2



- Using a TR8 Torx screwdriver, remove the two T8 Torx screws that secure the LED cover to the base enclosure.

Step 3



- Flip the laptop back over with the front facing forward. Open the screen.

Step 4



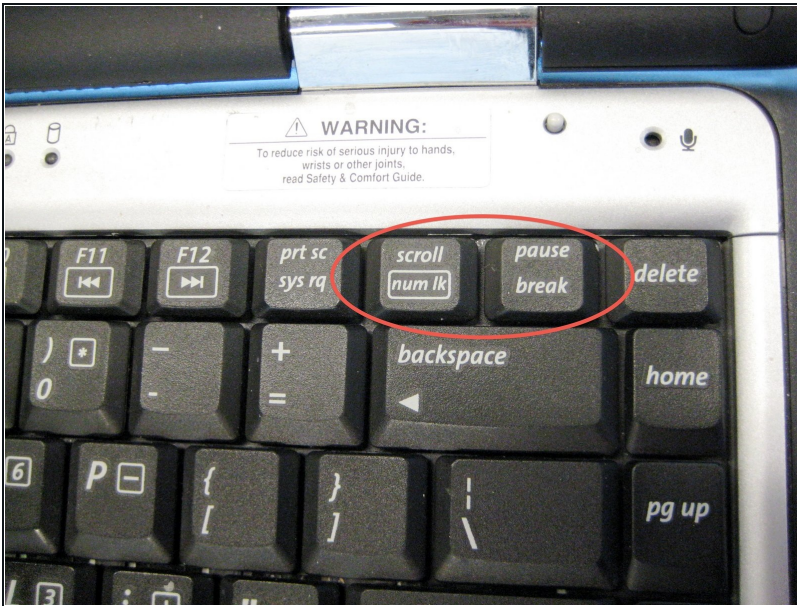
- Locate the **F1** and **F2** keys near the top left corner of the keyboard.

Step 5



- While holding the **F1** and **F2** keys, insert a spudger between the keys into the notch in the LED cover. Lift up.

Step 6



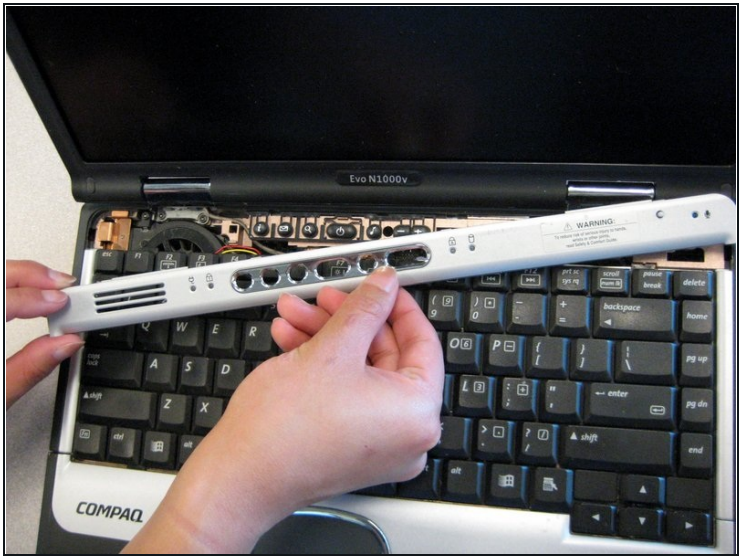
- Locate the **Scroll** and **Pause** keys near the top right corner of the keyboard.

Step 7



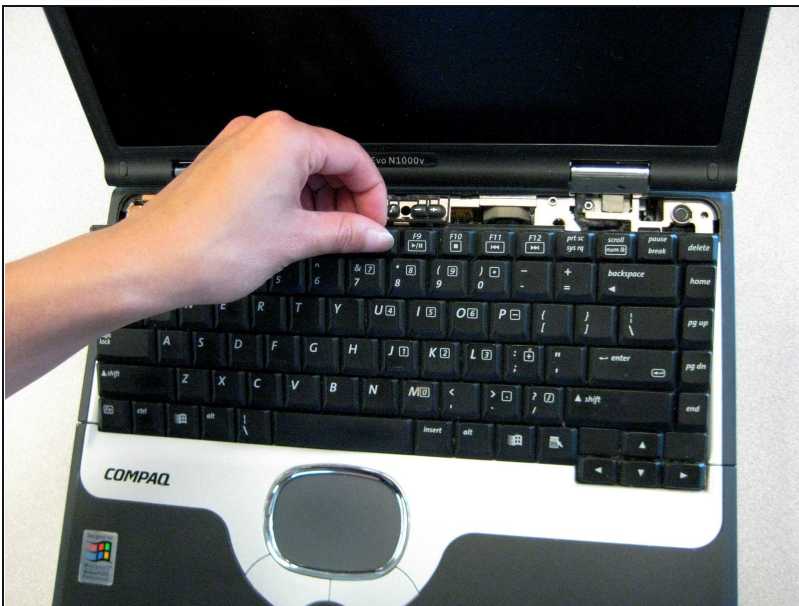
- While holding the **Scroll** and **Pause** keys, insert a spudger between the keys into the notch in the LED cover. Lift up.

Step 8



- Insert a spudger between the **F7** and **F8** keys. Lift up to remove the LED cover.

Step 9 — Keyboard



- Lift the back edge of the keyboard and pull towards the screen.

Step 10



- Pull the cable and lift up to release.

Step 11



- Remove the keyboard.

Step 12 — Palm Rest



- Close the laptop and flip it so the rear panel is facing up.

Step 13



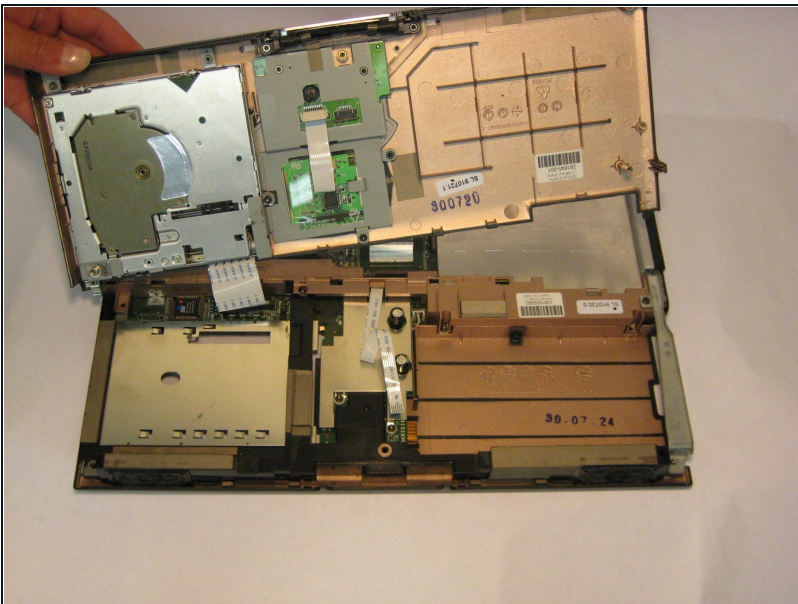
- Using the TR8 Torx screwdriver, remove the six screws from the back case.

Step 14



- Remove the battery.
- Remove the screw from the metal support on the case edge with a Torx T8 screwdriver.
- Flip the laptop over again so the top is facing up.
- Open the laptop screen and face it towards you.

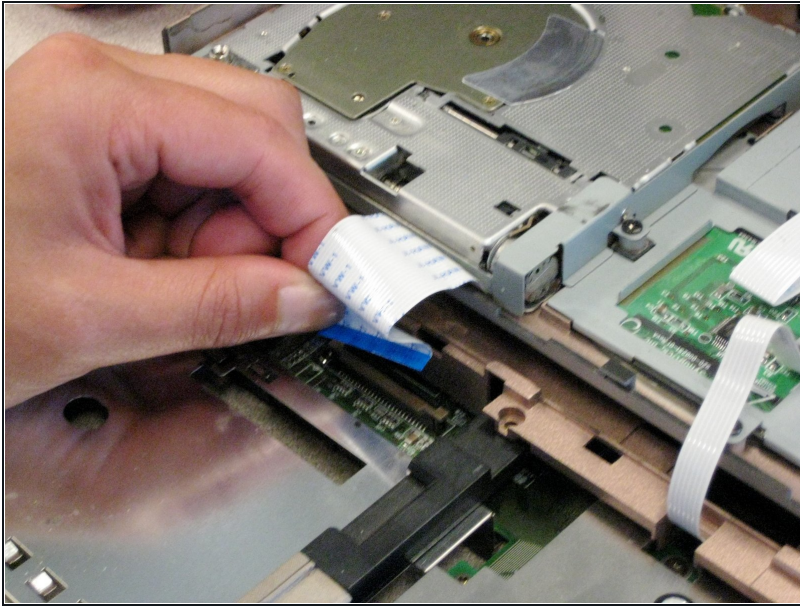
Step 15



- Lift the the palm rest up from the front edge of the laptop and swing it towards the screen.

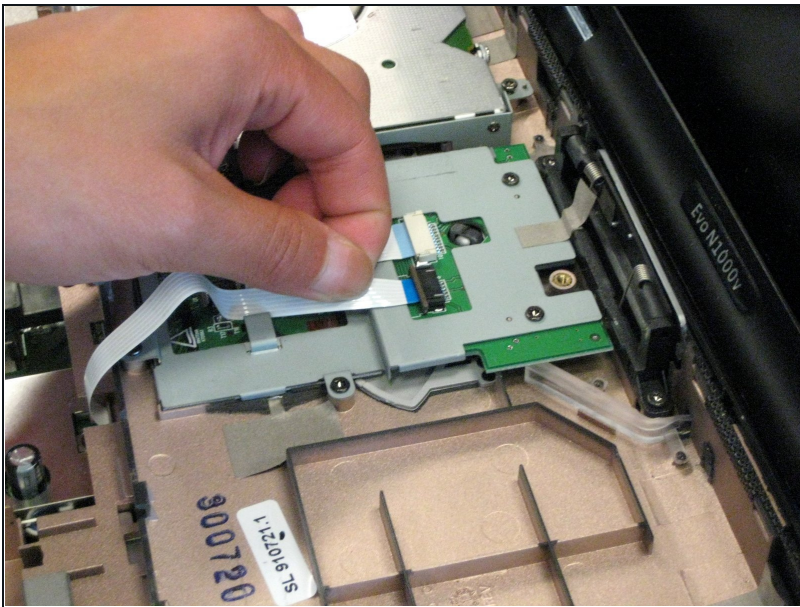
⚠ Be gentle as it is connected by some cables.

Step 16



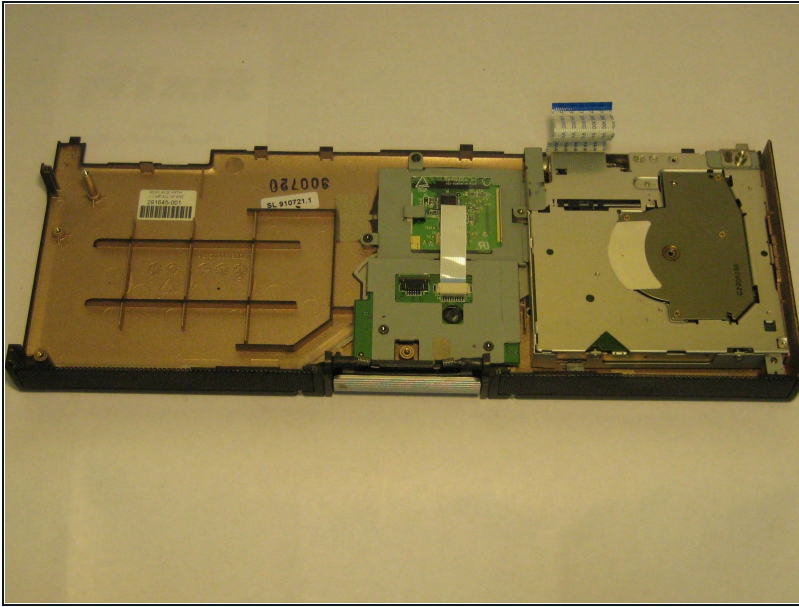
- [Disconnect the ribbon connector](#) from the socket.

Step 17



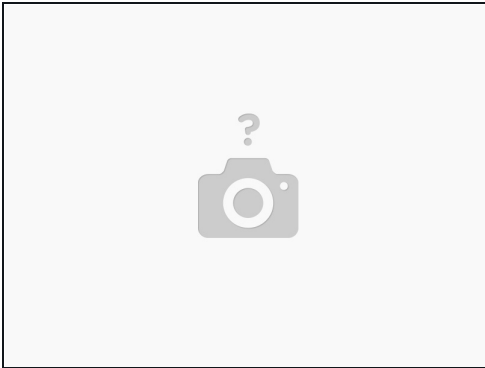
- Disconnect the second ribbon cable.

Step 18



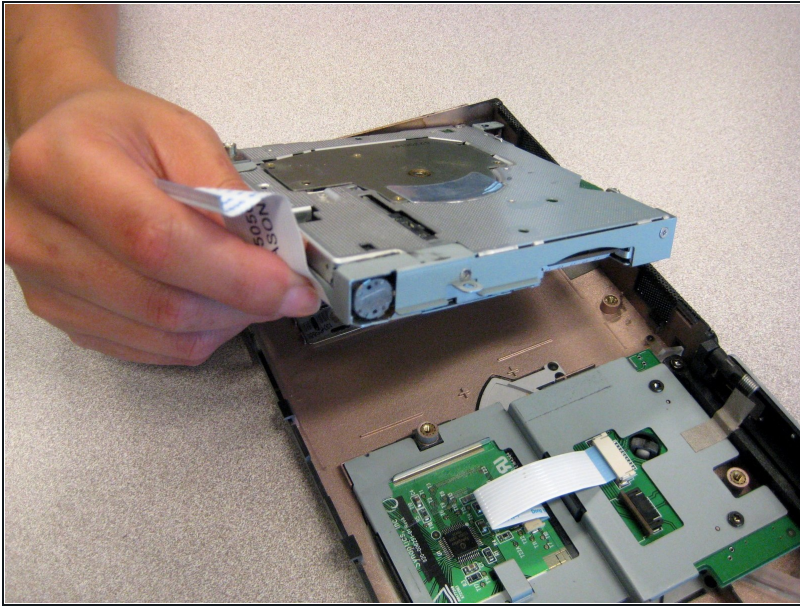
- Remove the palm rest.

Step 19 — Floppy Drive



- Locate and remove the three screws shown in picture.

Step 20



- Lift up and remove floppy drive from the palm rest.

To reassemble your device, follow these instructions in reverse order.