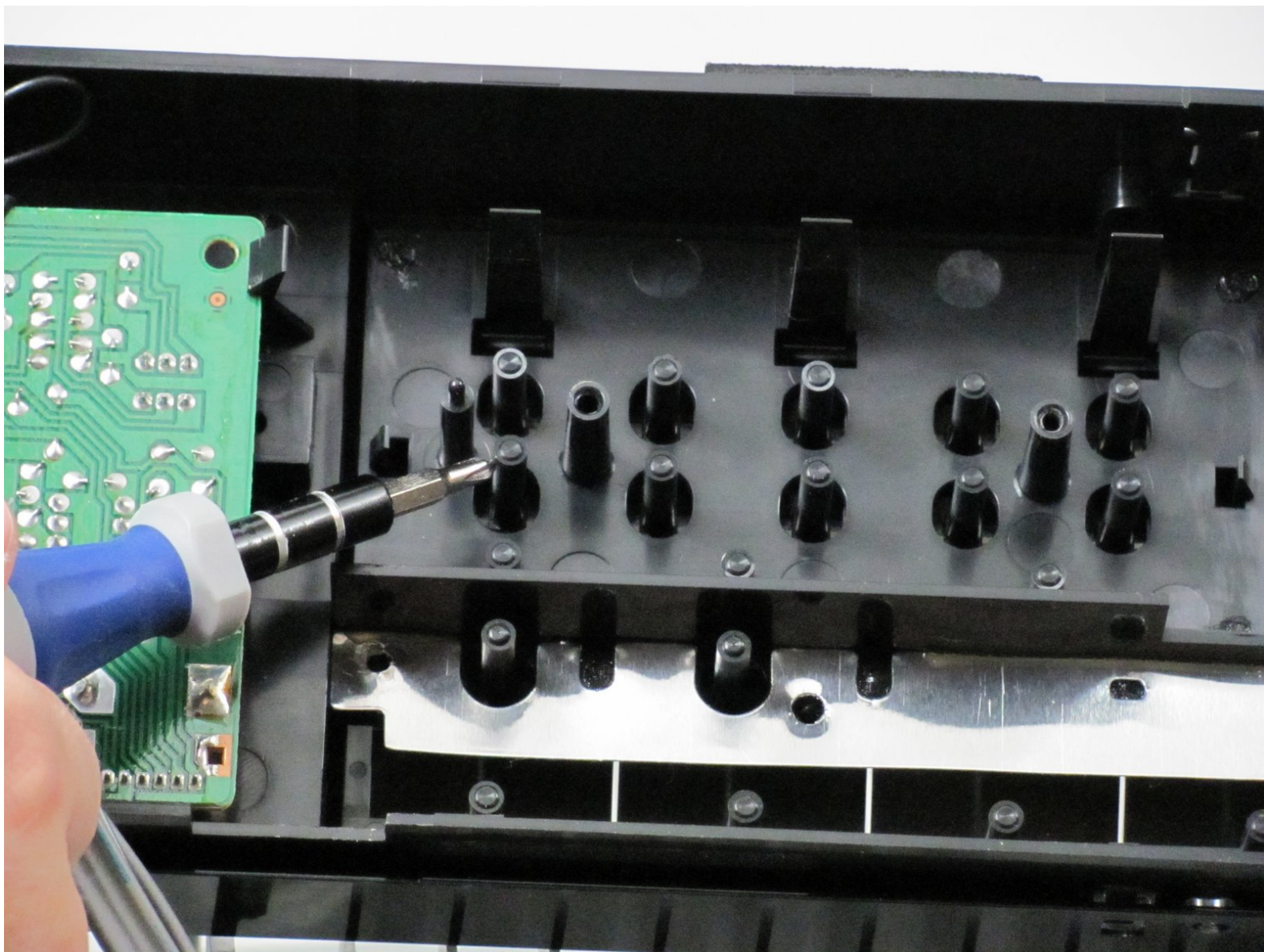




# Onkyo TX-800 Button Pins Repair

Use this guide to fix the button pins of your Onkyo TX-800 if they are crooked.

Written By: Ryan



---

## INTRODUCTION

Use this guide to fix the button pins of your Onkyo TX-800 if they are crooked.

---



### TOOLS:

- [Phillips #0 Screwdriver](#) (1)
  - [Large Needle Nose Pliers](#) (1)
-

## Step 1 — Disassembling Onkyo TX-800 Top case



- Remove the two screws on both sides of the receiver. Keep these and the rest of the screws in a safe place.

## Step 2



- Remove the top screw on the back panel.

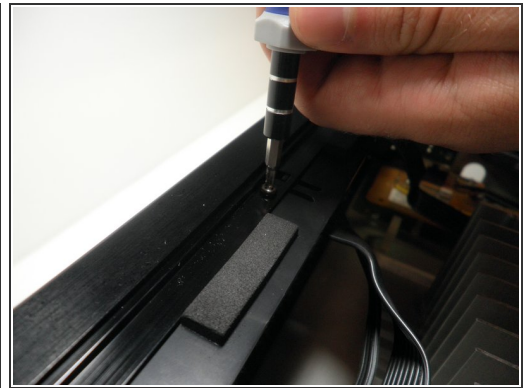
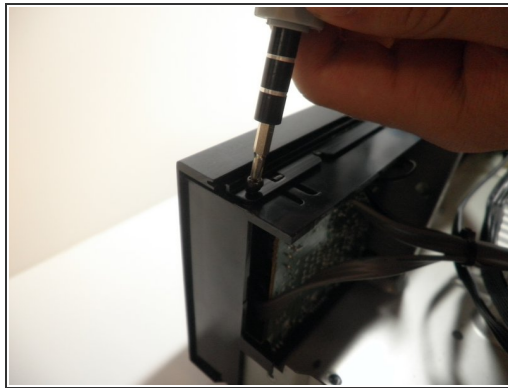
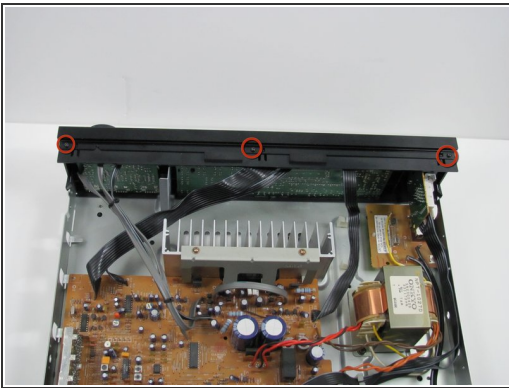


### Step 3



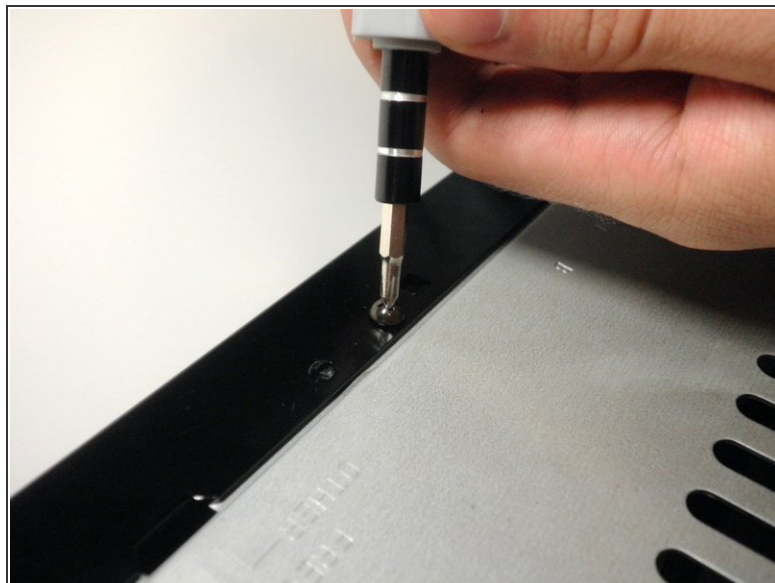
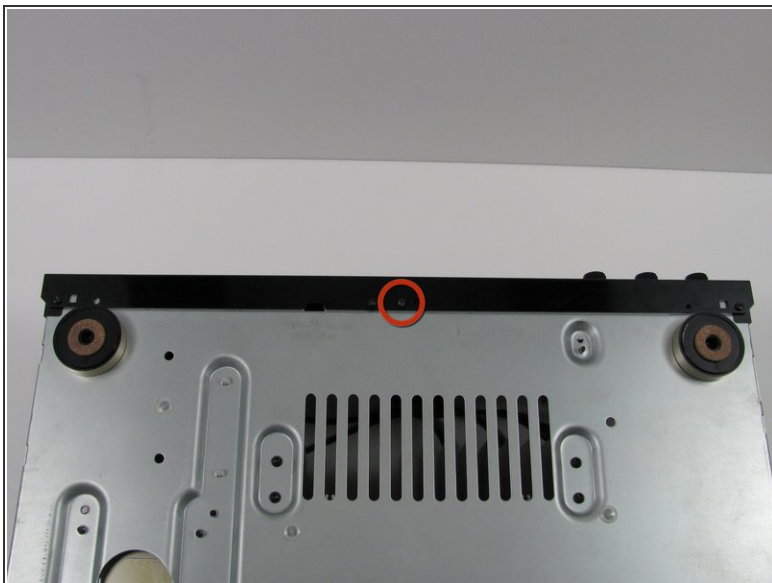
- Slide off the case to expose the internal components of the receiver.

### Step 4 — Face plate



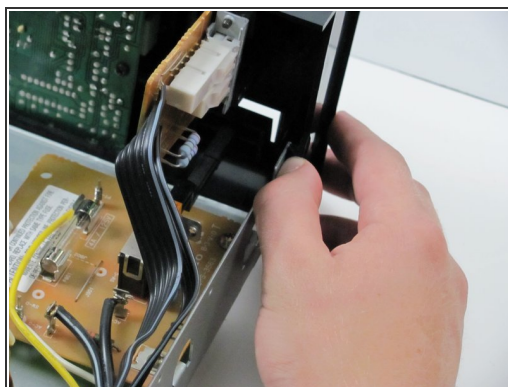
- Unscrew the three screws on top of the face plate.

## Step 5



- Unscrew the one screw on the bottom of the front panel.

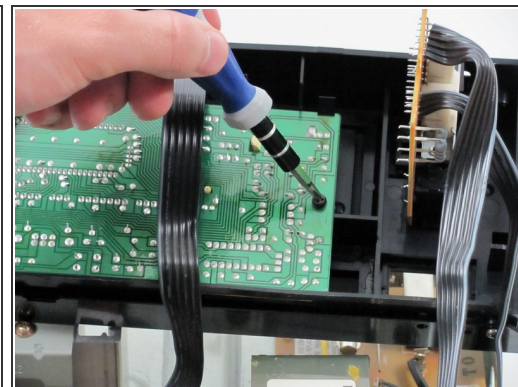
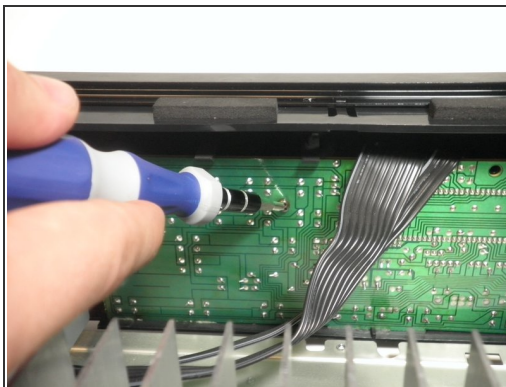
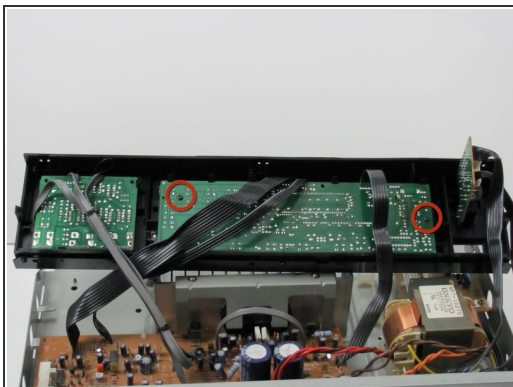
## Step 6



- Simultaneously push down on the head of the snap on each end of the device with your thumbs and push to separate the face plate. This may take some force.

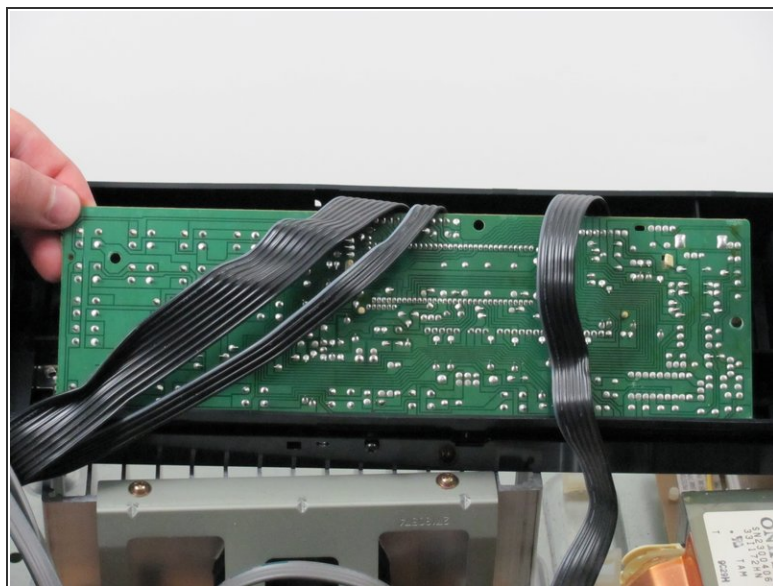
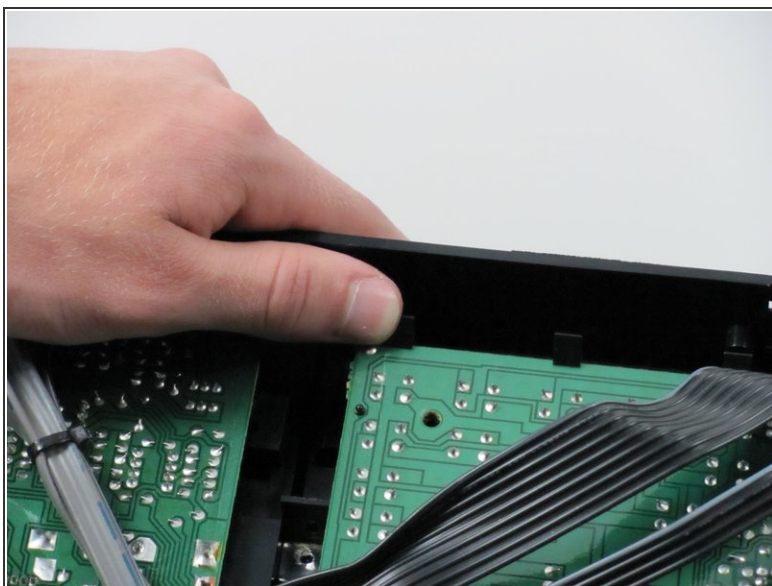


## Step 7 — Logic board



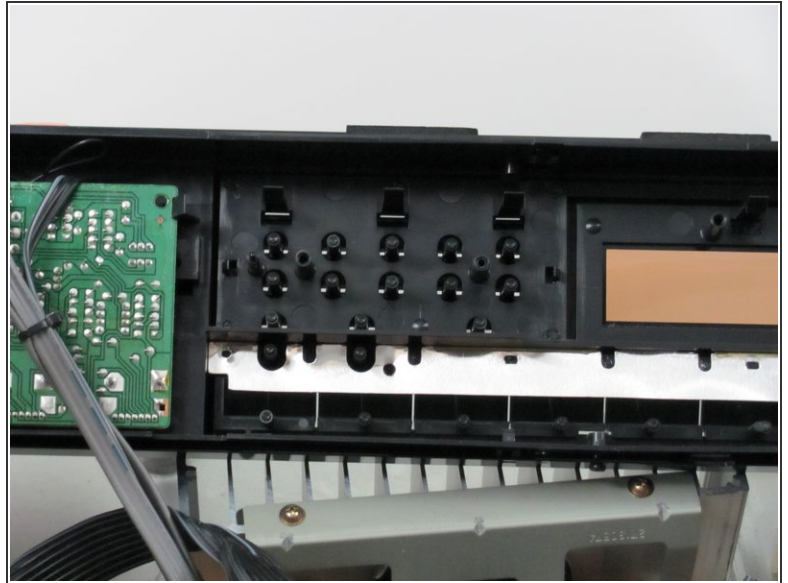
- On the inside middle of the face plate you will see two screws in the logic board. Unscrew these two screws.

## Step 8



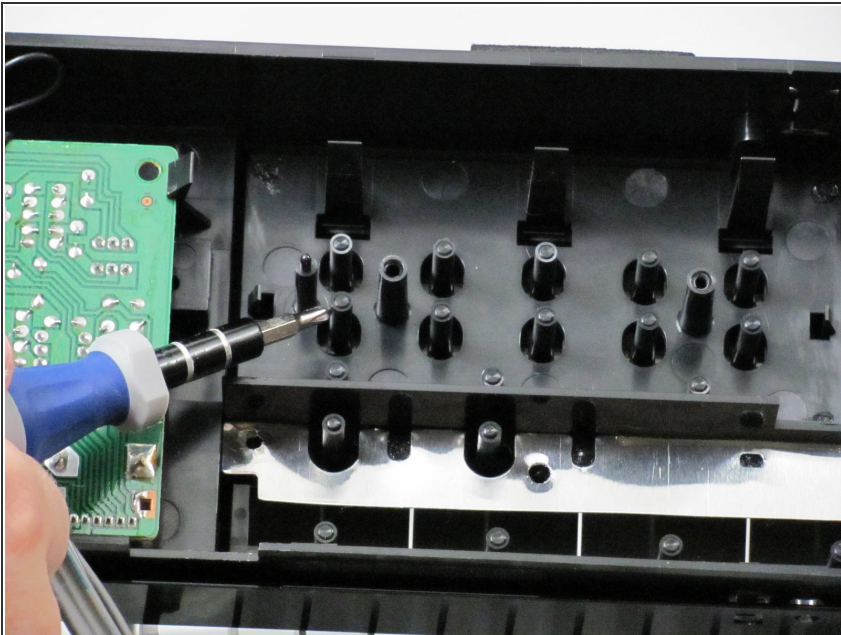
- You will see the same snaps along the top of the logic board. Press the heads of the snaps down and pull the logic board out and up.

## Step 9 — Onkyo TX-800 Button Pins Repair



- You will see that each button on the face plate has a button pin that presses the corresponding button on the logic board. Visually check if any of these pins are bent or broken.

## Step 10



- If any of the pins are bent use your pliers to bend the pins back into shape.
- ⚠ Take caution that too much force can break the button pins.

To reassemble your device, follow these instructions in reverse order.

This document was generated on 2021-06-23 11:10:32 PM (MST).

