



# Braun Oral-B Professional Care 9900 Triumph Ni-MH battery Replacement

Replacing lithium battery for Braun Oral-B Professional Care 9900 Triumph

Written By: Shinn Chyang Chen



## INTRODUCTION

The battery can be bought either on ebay or amazon. Verify with your old battery before purchase as Oral-B uses shorter battery outside of USA. The one sold in USA is 48mm L x 17mm D. The other size is 42mm L x 17mm D.

There are couple [YouTube](#) video which can help you visualize also

History: I have bought that toothbrush in 08/25/2009. I have replaced the battery in 07/07/2012. I am replacing again on 08/30/2014.



### TOOLS:

- [Solder](#) (1)
- [T6 Torx Screwdriver](#) (1)
- [Flathead 3/32" or 2.5 mm Screwdriver](#) (1)
- [Flush Wire Cutter](#) (1)
- [Soldering Iron](#) (1)
- [Desoldering Braid](#) (1)



### PARTS:

- [Oral-B Professional Care or Triumph \(USA Model\) Replacement Battery](#) (1)
- [Oral-B Professional Care or Triumph \(International Model\) Replacement Battery](#) (1)

## Step 1 — Ni-MH battery



- Remove plastic ring by prying it off with large screwdriver. Be careful not to damage rubber handle top or the ring.

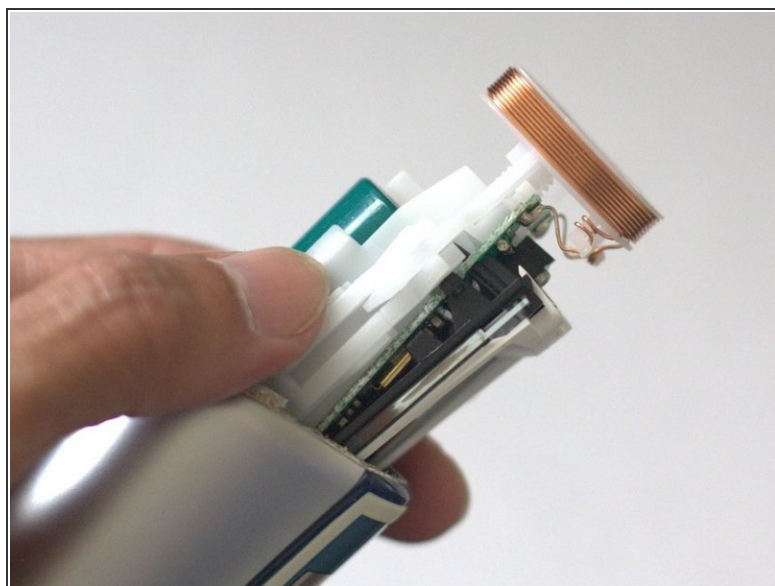
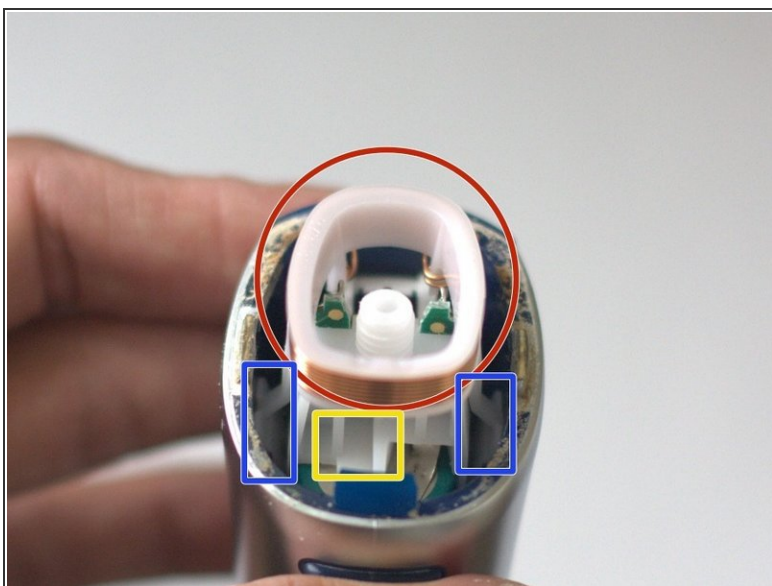
## Step 2



- To remove the base of your handle place triangle shaped knob on your charger into hole at the bottom to unscrew and remove a small plastic screw. Turn clockwise
- You might use a flat screw driver to help separate the bottom



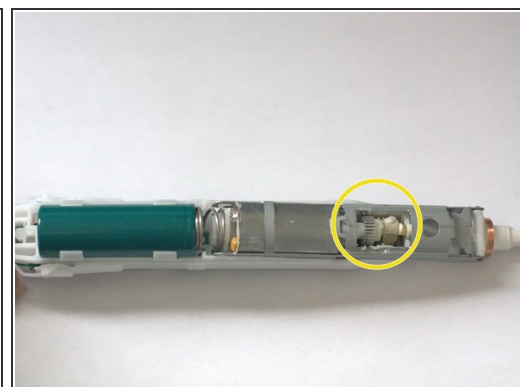
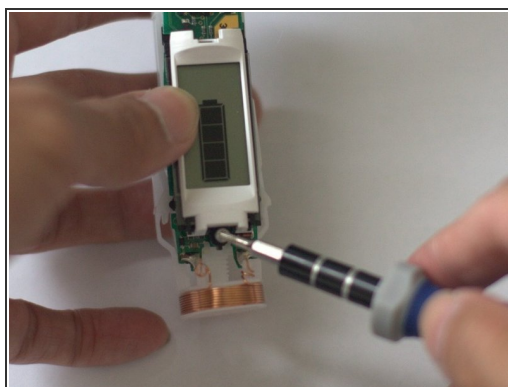
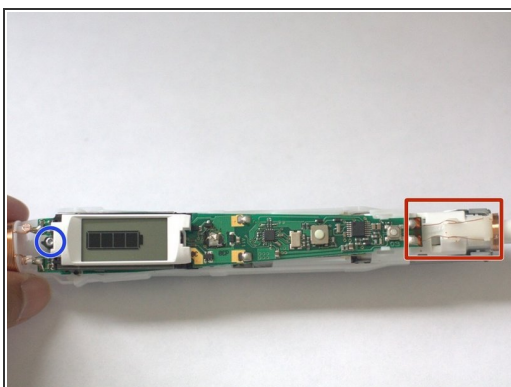
### Step 3



⚠ Do not pull the coil ring as the wire will break away from the the circuit board

- With flat screw driver, slide down along the case. Gently push both plastic tab toward the center
- To help you removing the inner part, you can insert another screw driver here and pull gently toward you while you try to free the plastic tab

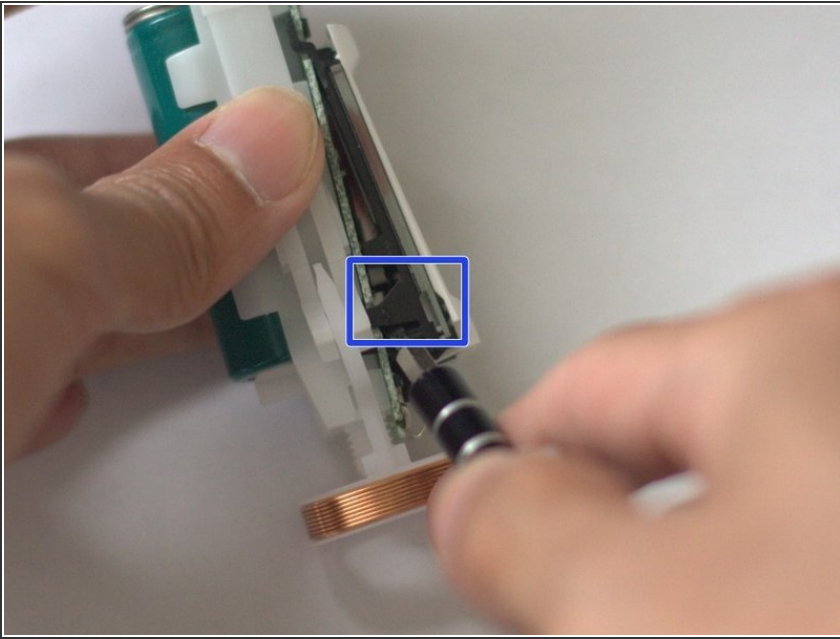
### Step 4



⚠ Be careful not to break those wire as they are very fragile

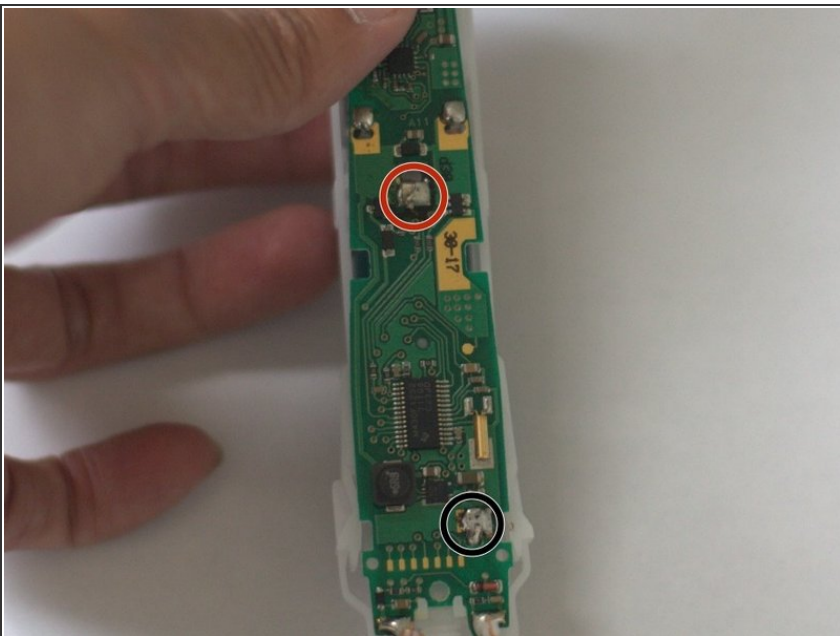
- Use a T6 screwdriver to remove the screw
- You can also grease the gears

## Step 5



- Pull the plastic clip and lift the LCD screen a little bit on both side so you can free the LCD screen from the bottom
- After you have remove both plastic clip away from the circuit, slide the LCD screen up. You will fee the LCD screen from the top

## Step 6



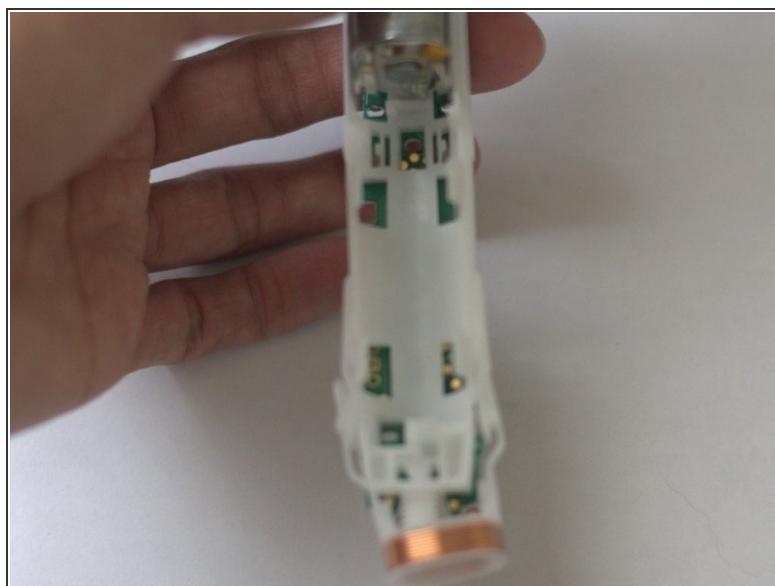
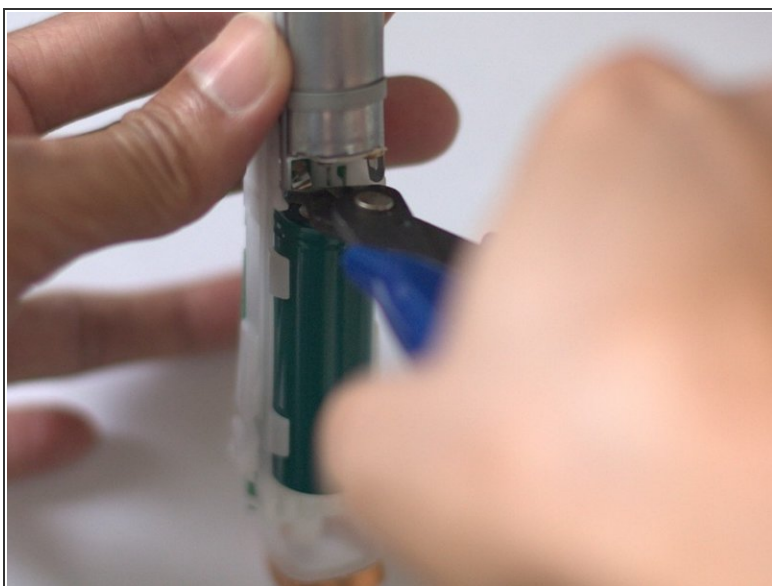
- This is the positive tab
- This is the negative tab

## Step 7



- Remove the spring

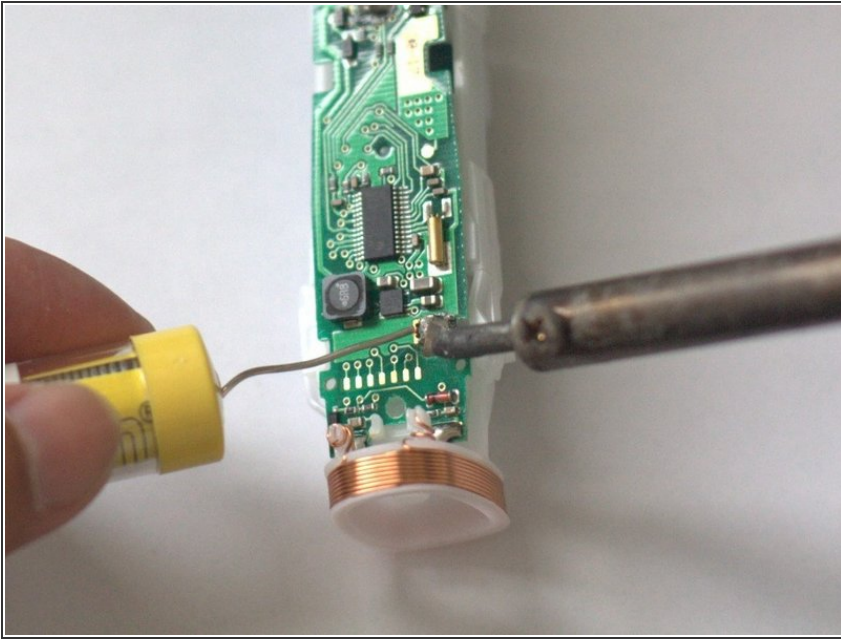
## Step 8



- Remove the battery tab from the circuit board



## Step 9



- ⚠ Make sure you respect the polarity when you are placing the new battery (see step 6)
- You might need to trim the battery tab
- Solder the battery tab on the circuit board

To reassemble your device, follow these instructions in reverse order.