



# Compaq Presario CQ58 WiFi, Bluetooth mini PCI card Replacement

Written By: ZFix



---

## INTRODUCTION

How to change the WiFi mini PCI card on HP Compaq Presario CQ58.

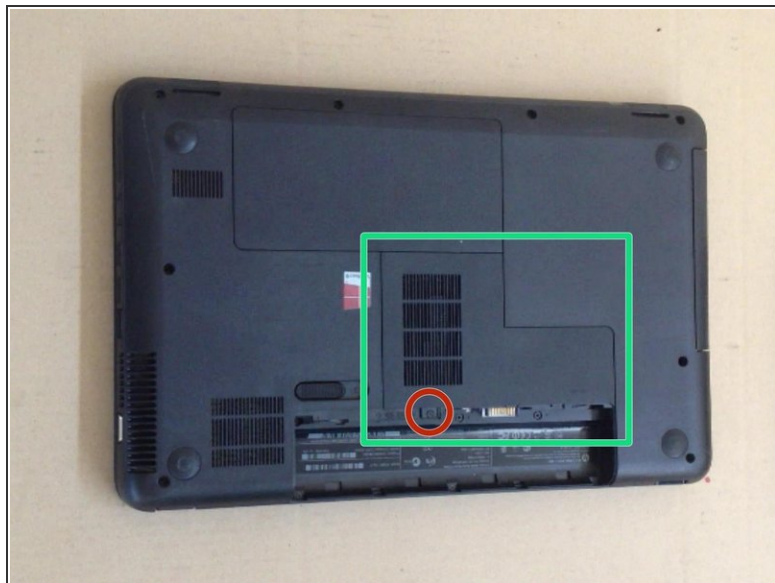
[video: <http://youtu.be/QDYm7m1AfLU>]



### TOOLS:

- [Phillips #0 Screwdriver](#) (1)
  - [iFixit Opening Tool](#) (1)
-

## Step 1 — WiFi, Bluetooth mini PCI card



- Disconnect the Battery.
- Remove the Memory Cover.

## Step 2



- Disconnect the WiFi Antenna cable, remove the screw and you can change the WiFi mini PCI card.
- **Did you do it successfully?**

To reassemble your device, follow these instructions in reverse order.