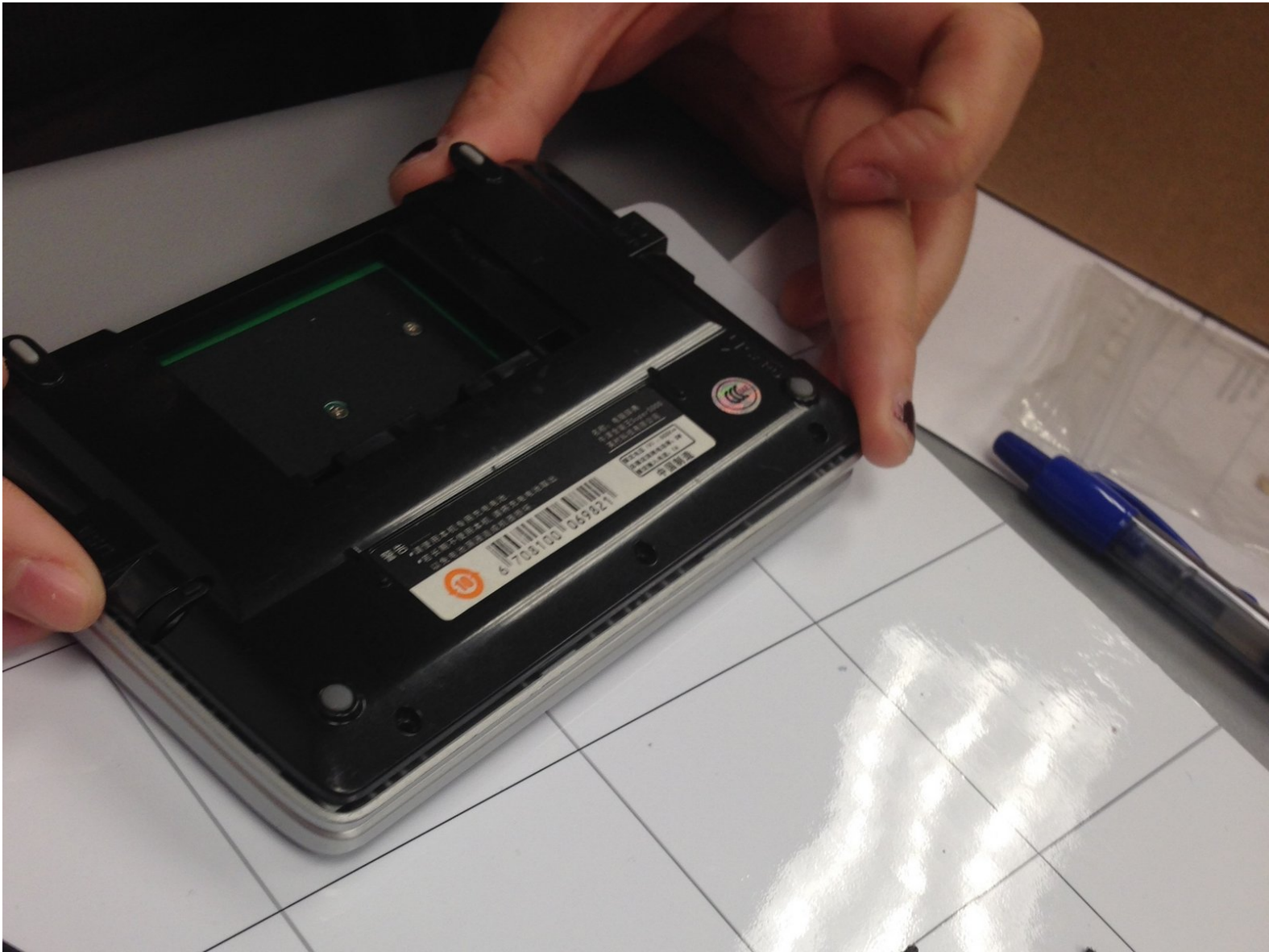




Besta Super 5000 Back Cover Replacement

How to replace the back cover on the Besta Super 5000.

Written By: Jessie





TOOLS:

- [Phillips #0 Screwdriver](#) (1)
- [iFixit Opening Tools](#) (1)

Step 1 — Battery



- Turn the device over so that the barcode is facing upwards.

Step 2



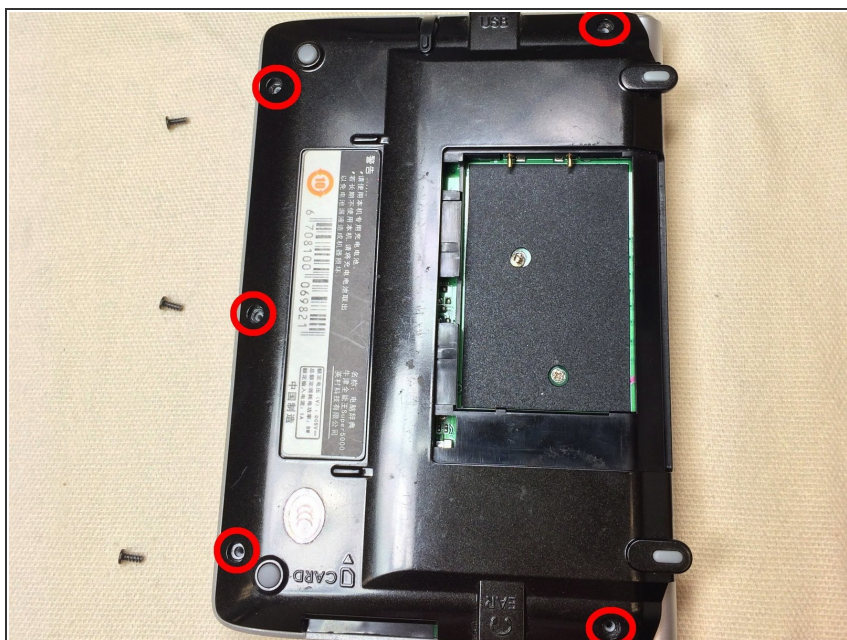
- Place your fingers on the battery cover arrow and pull the cover down and off the device.

Step 3



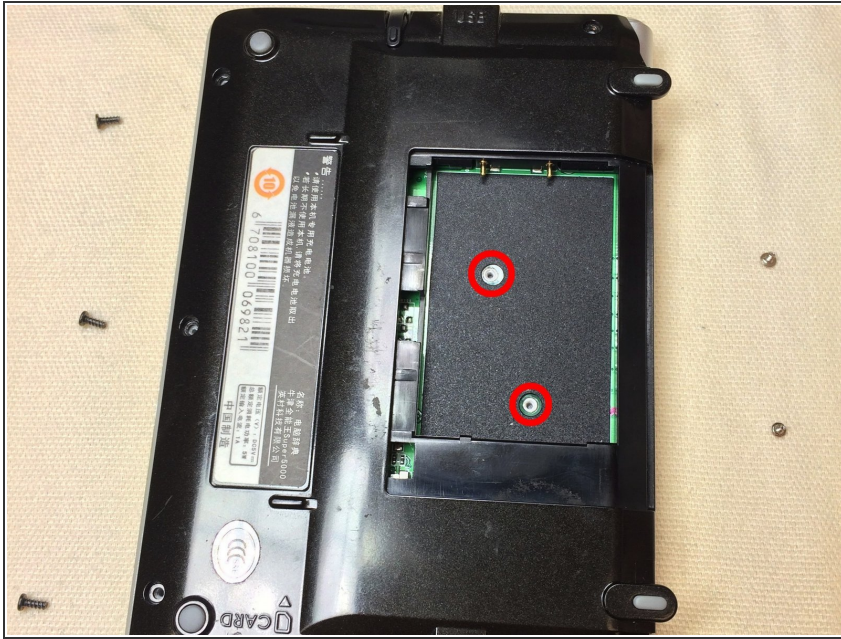
- Pull upwards on the battery tab to remove the battery from the device.

Step 4 — Back Cover



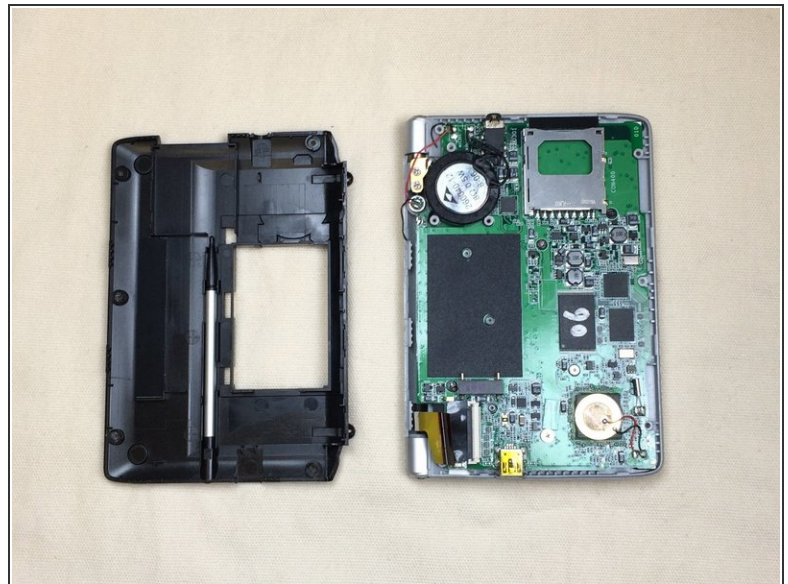
- Remove the five screws around the edge of the device using a Phillips #0 screwdriver.


Step 5



- Remove the two screws behind the battery using a Phillips #0 screwdriver.

Step 6



 Potential for device damage: All screws must be removed before you begin this step. Do not forcefully pry apart the device with screws still in it because you may damage it.

- Gently pry off the backing using an opening tool.

To reassemble your device, follow these instructions in reverse order.