



Repairing Gateway 420GR

Gateway 420GR

Written By: kyle23



INTRODUCTION

Component teardown of Gateway 420GR desktop. This machine originally shipped with Windows XP.

Step 1 — Repairing Gateway 420GR



- The left panel of the case has thumbscrews that release the left side from the case.

Step 2



- Loosen the first thumbscrew

Step 3



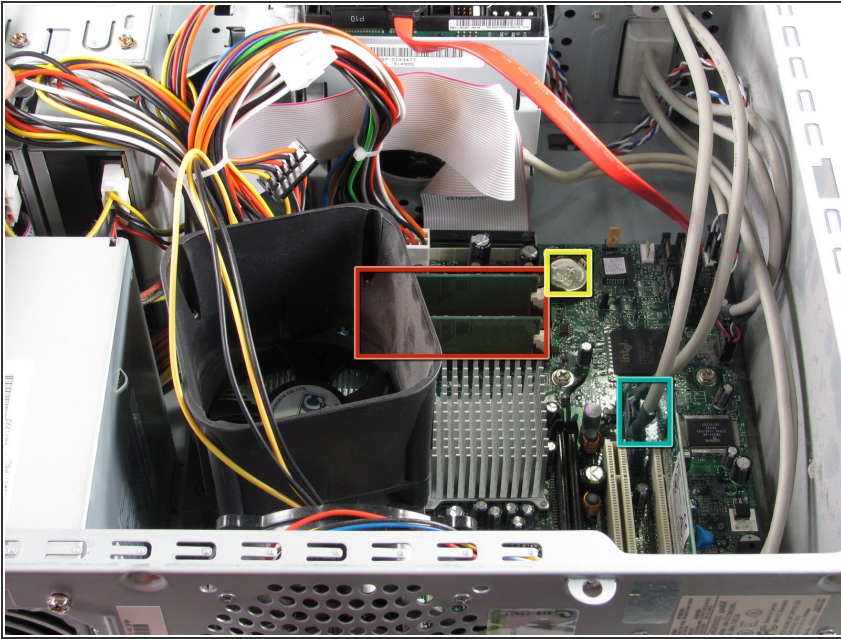
- Loosen the second thumbscrew.

Step 4



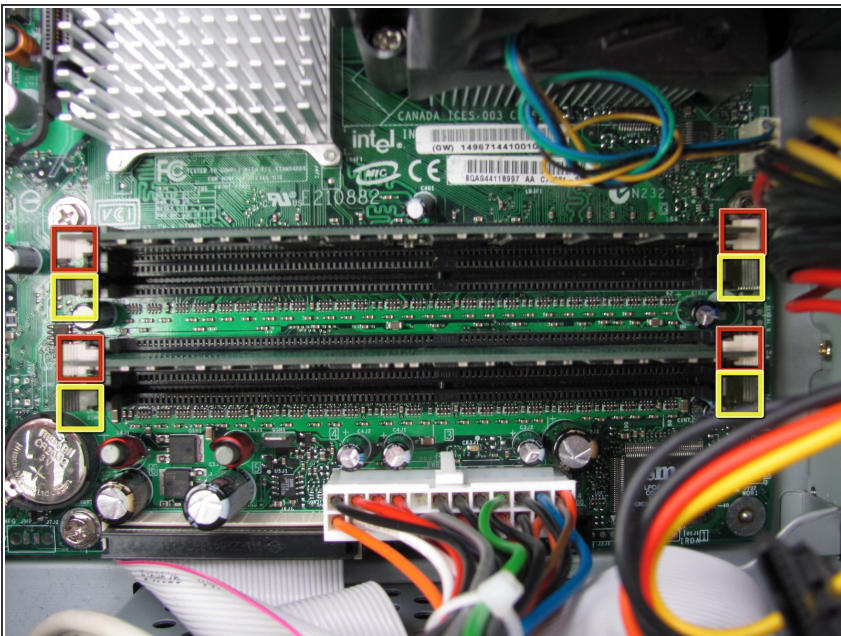
- The side panel will now slide toward the back of the case.

Step 5



- System RAM
- USB headers for front panel USB ports.
- CMOS battery

Step 6



- Pair one RAM retention clips. There are two (one on each end) for each of the available slots.
- Pair two RAM retention clips. There are two (one on each end) for each of the available slots.
- RAM should be paired (same size) and the machine support up to 4GB or RAM as 1GB modules in each of the 4 slots.
- System supported RAM is 184-pin DIMM DDR PC3200

To reassemble your device, follow these instructions in reverse order.