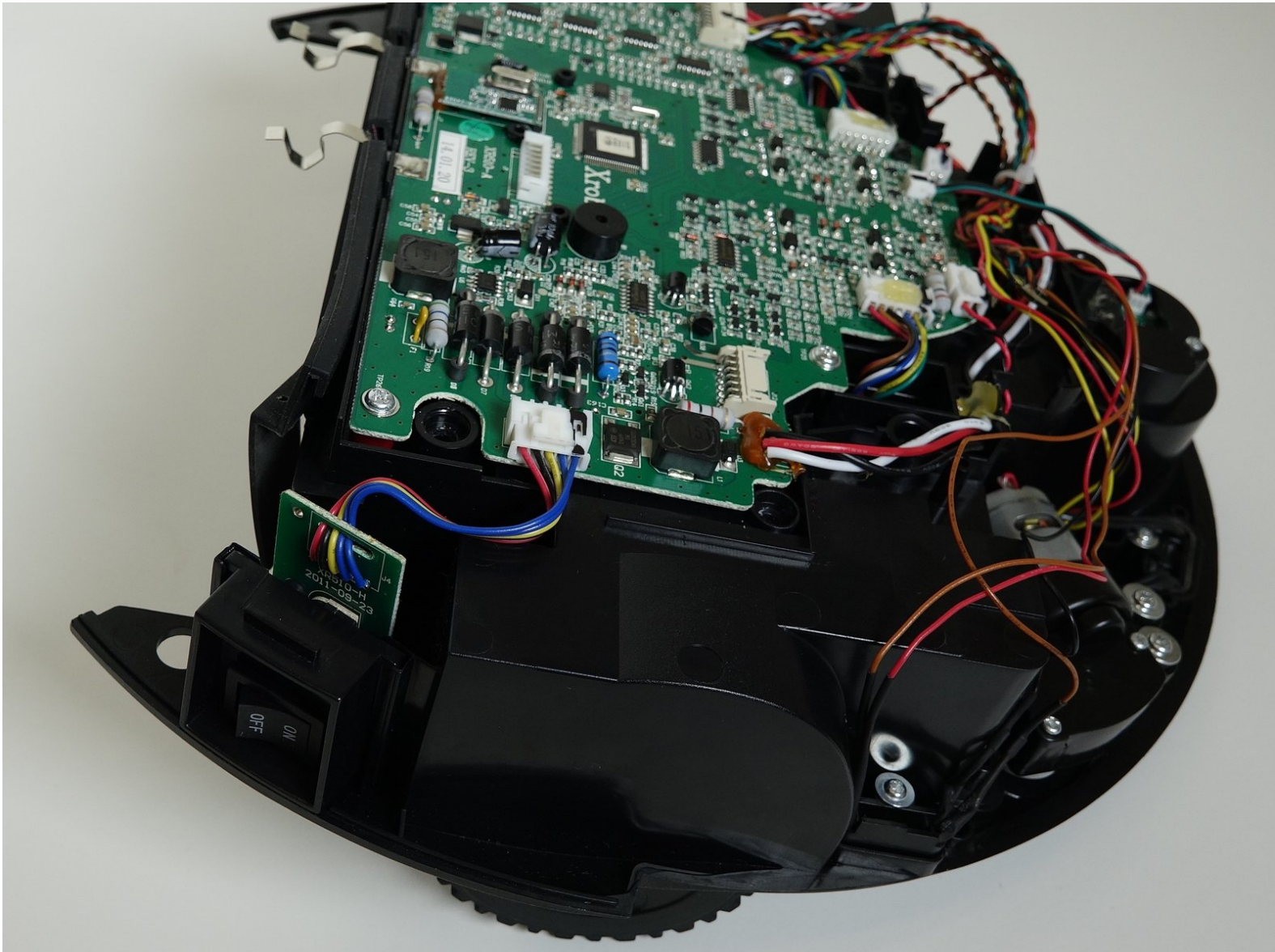




bObi Robotic Vacuum Power Switch Replacement

How to open up bObi and remove the power switch for replacement.

Written By: Chelsea



INTRODUCTION

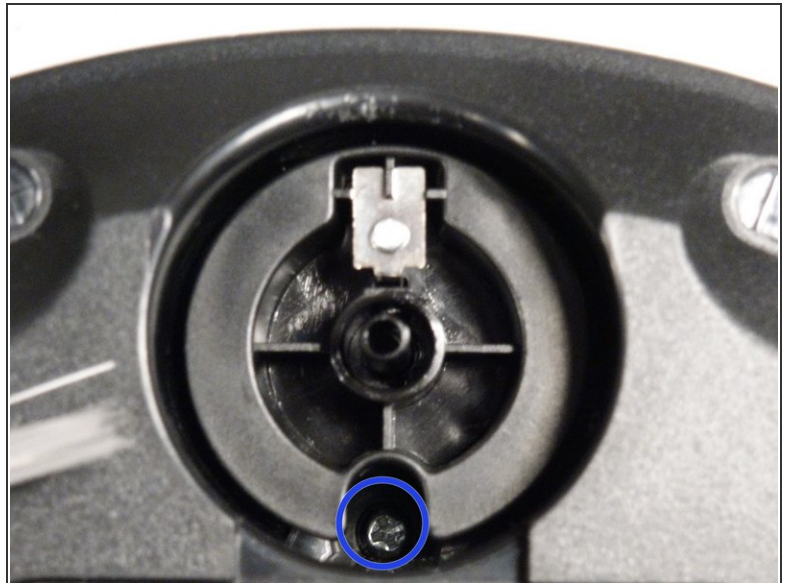
For help closing bObi when the repair is complete, see [Closing bObi's Cover Post-Repair](#)



TOOLS:

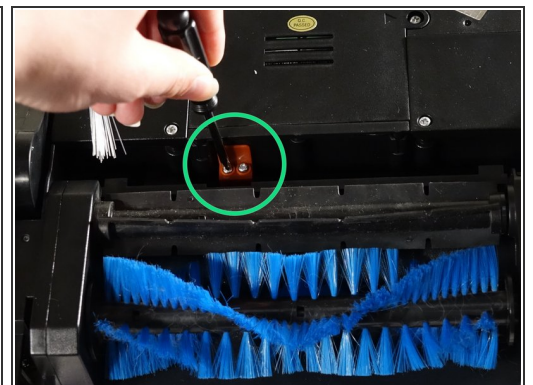
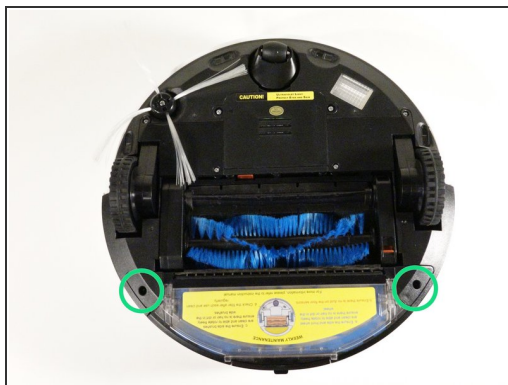
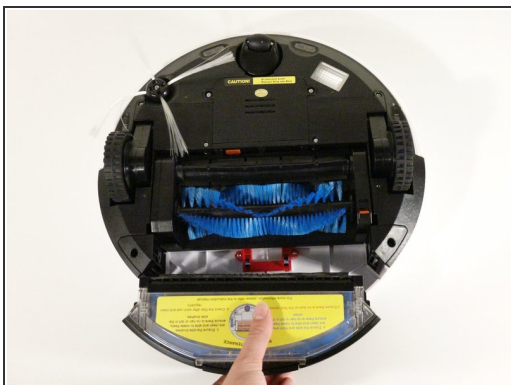
- [Phillips #2 Screwdriver](#) (1)
-

Step 1 — Top Cover



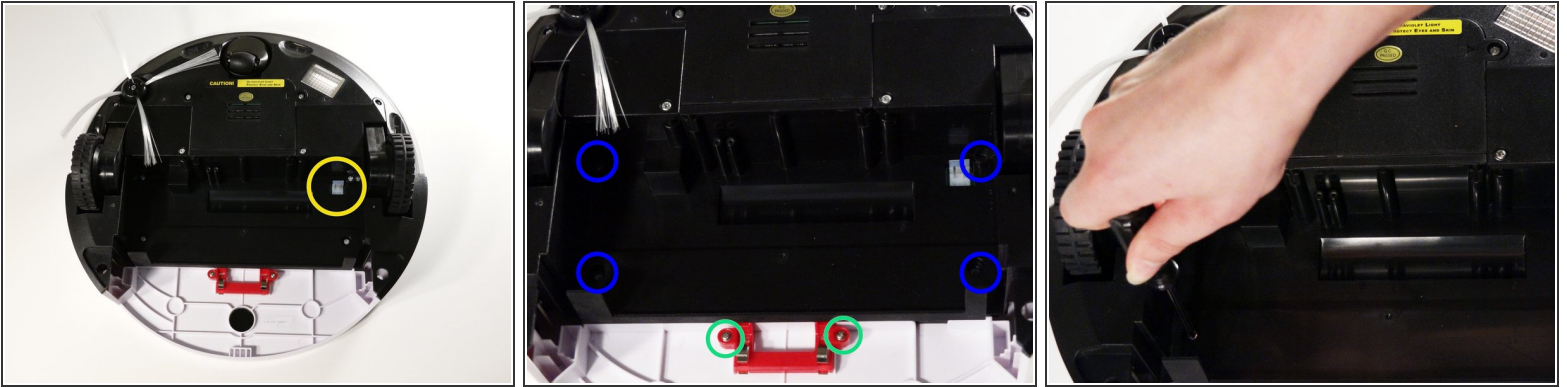
- Remove bObi's front wheel to access one of the screws holding bObi together.
- i* Make sure the wheel is turned closer to bObi's front touch sensors. Use your screwdriver for leverage, and the wheel will pop up and out.
- Uninstall the larger screw that sits deeper in the wheel compartment.

Step 2



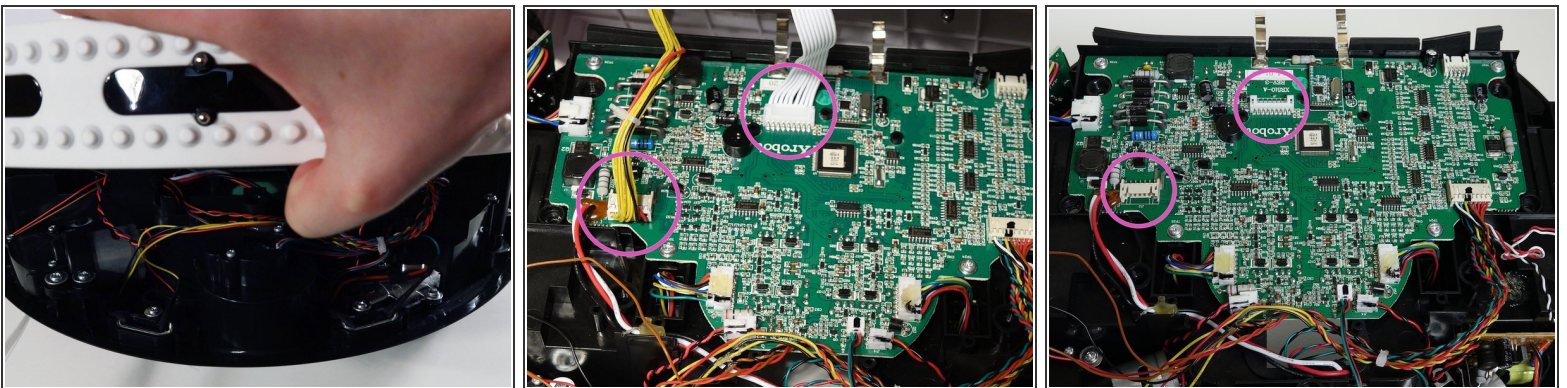
- Remove bObi's dustbin.
- Uninstall the 2 screws close to the bin and 2 smaller screws above her main brushes.

Step 3



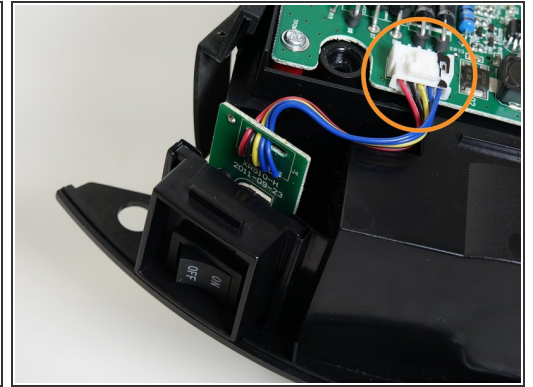
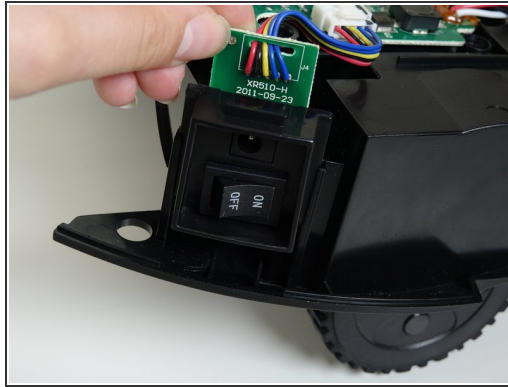
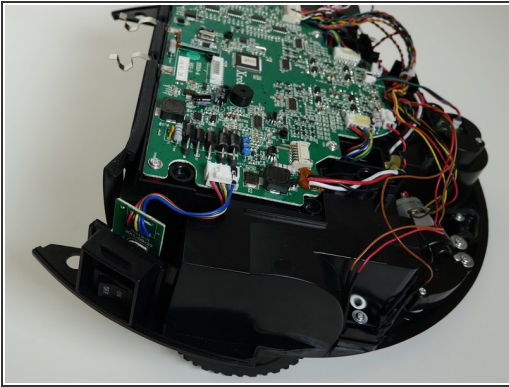
- Lift the brush holder. To detach completely, unplug it from bObi.
- Remove the two screws on the dustbin contact point holder inside bObi.
- There are 4 screws beneath the main brushes. Uninstall these, and open bObi up to expose her main circuit board.

Step 4



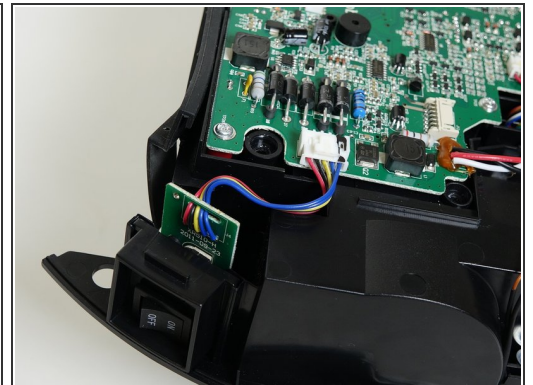
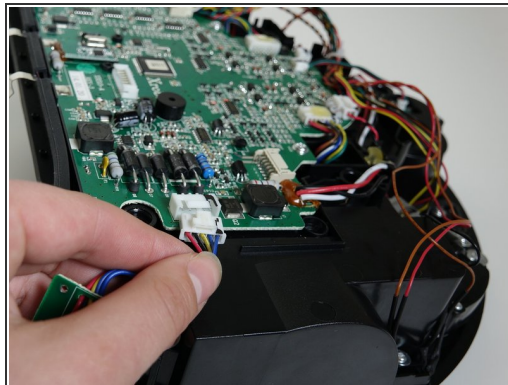
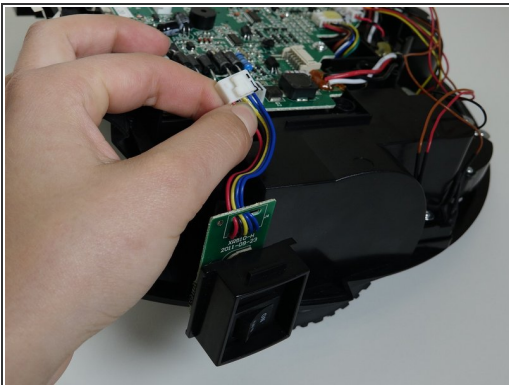
- Detach the two circuit plugs connecting bObi's cover to the main board and the cover will be completely removed.

Step 5 — Power Switch



- Slide the power switch up and out of its holder.
- Unplug its wires from the main board.

Step 6



- Slide the new power switch into the holders on bObi.
- Plug it in to the main board and begin closing bObi up. For steps on how to close bObi, see [Closing bObi's Cover Post-Repair](#)

To reassemble your device, follow the guide on closing bObi [Closing bObi's Cover Post-Repair](#)