



# Samsung Captivate Glide QWERTY Keyboard Replacement

This guide will list the steps to replace the keyboard on your Samsung Captivate Glide.

Written By: Jessica Martinez



---

# INTRODUCTION

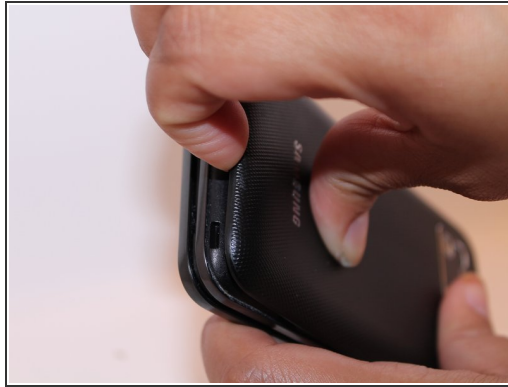
How to replace the keyboard on a Samsung Captivate Glide.



## TOOLS:

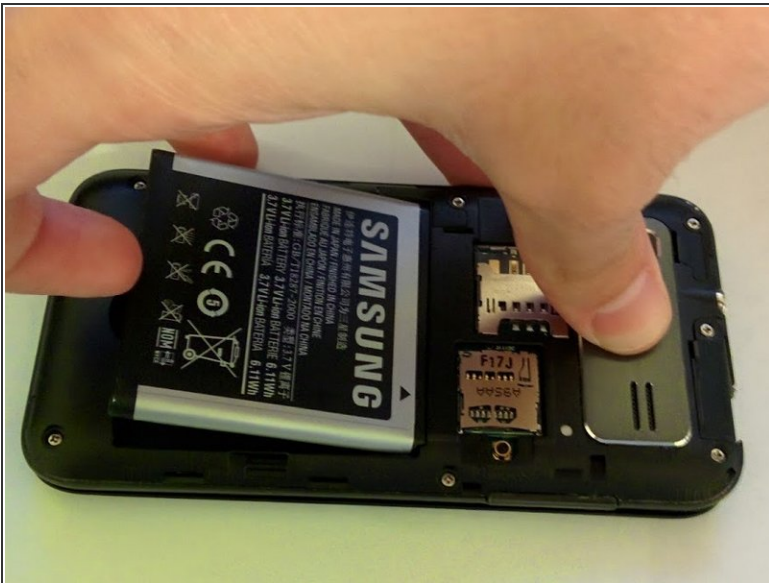
- [Phillips #00 Screwdriver](#) (1)
  - [iFixit Opening Tools](#) (1)
  - [Tweezers](#) (1)
-

## Step 1 — Motherboard



- Remove back cover using fingernail or plastic opening tool. The cover pulls up and off.

## Step 2



- Remove battery with plastic opening tool or finger.

## Step 3



- Remove the seven screws from backplate using the #00 screwdriver.

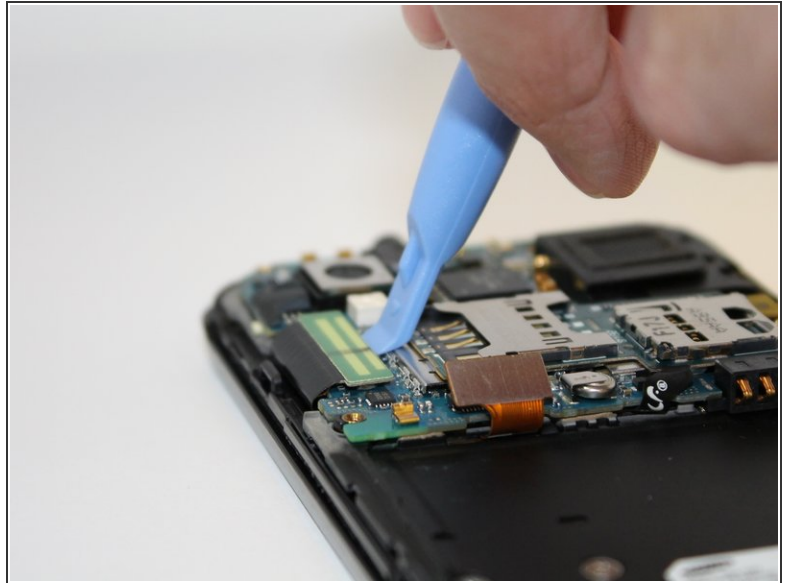
## Step 4



- Remove the back plate using the plastic opening tool.
- There is a lip on each side, and both must be pried up.
- ⓘ You can work your way around the edges after prying the two sides.

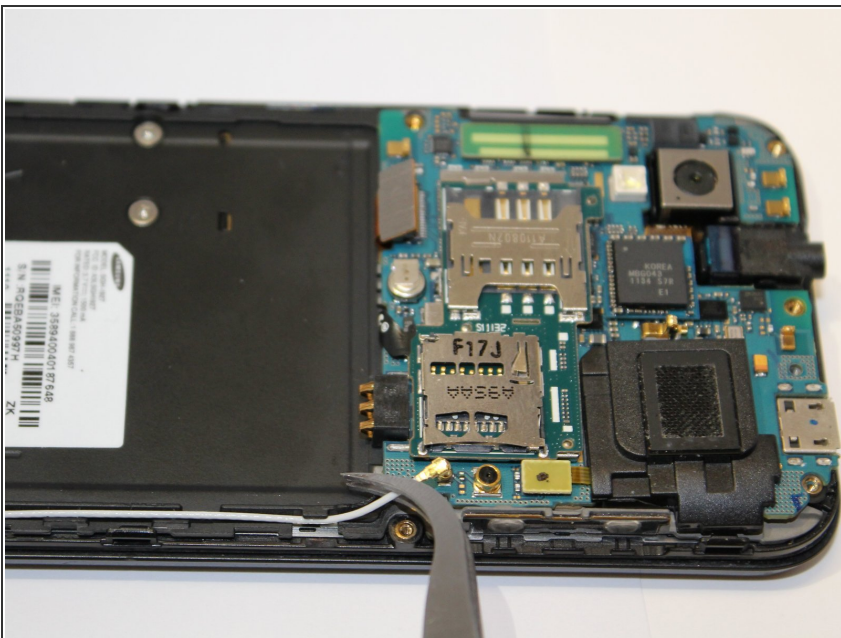


## Step 5



- Use the plastic opening tool to detach the two tabs connecting the motherboard to the base of the phone.

## Step 6



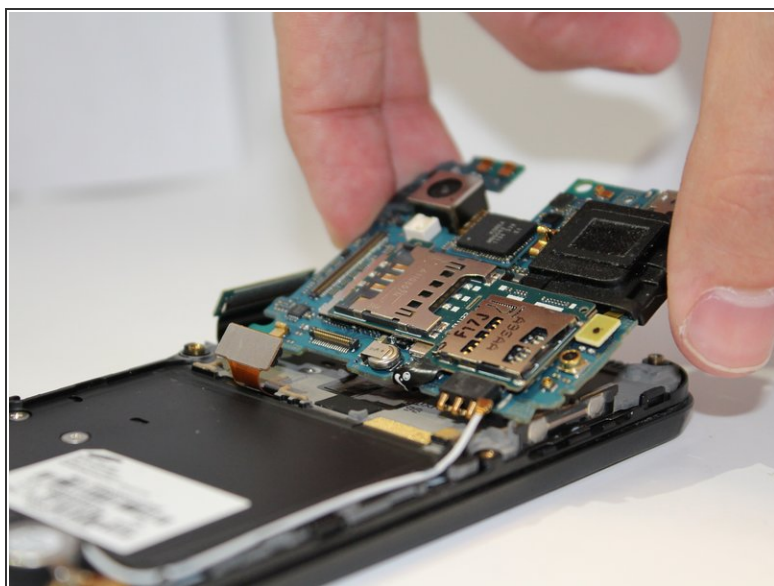
- Disconnect the antenna cable from the motherboard using tweezers.

## Step 7



- Remove the single screw connecting the motherboard to the base of the phone by using the #00 Phillips screwdriver.

## Step 8



- Lift the motherboard out of the base of the phone.

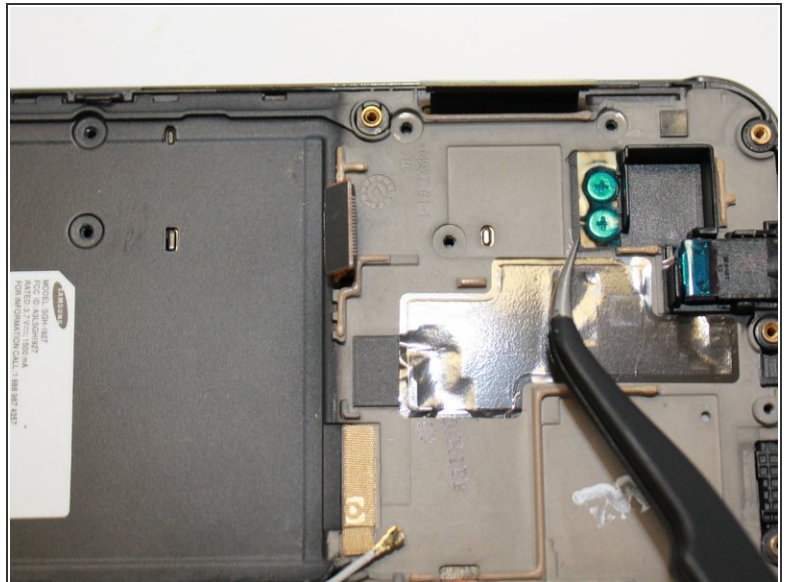
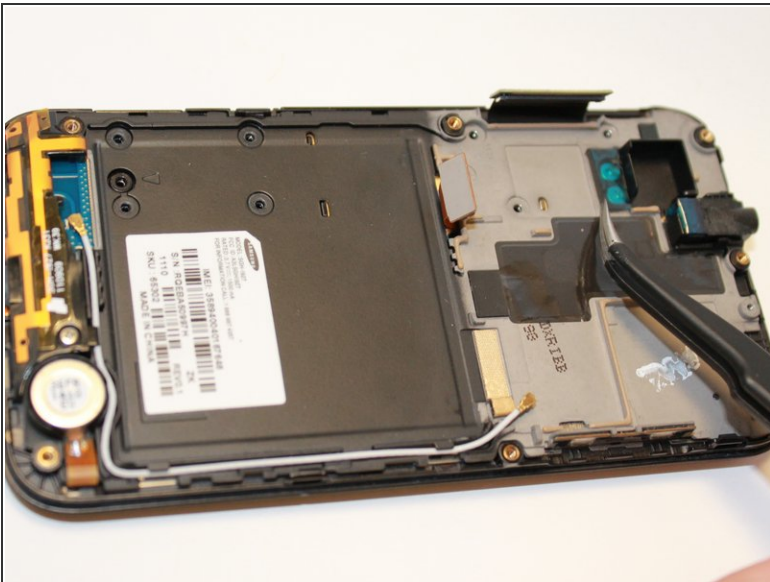


## Step 9 — QWERTY Keyboard



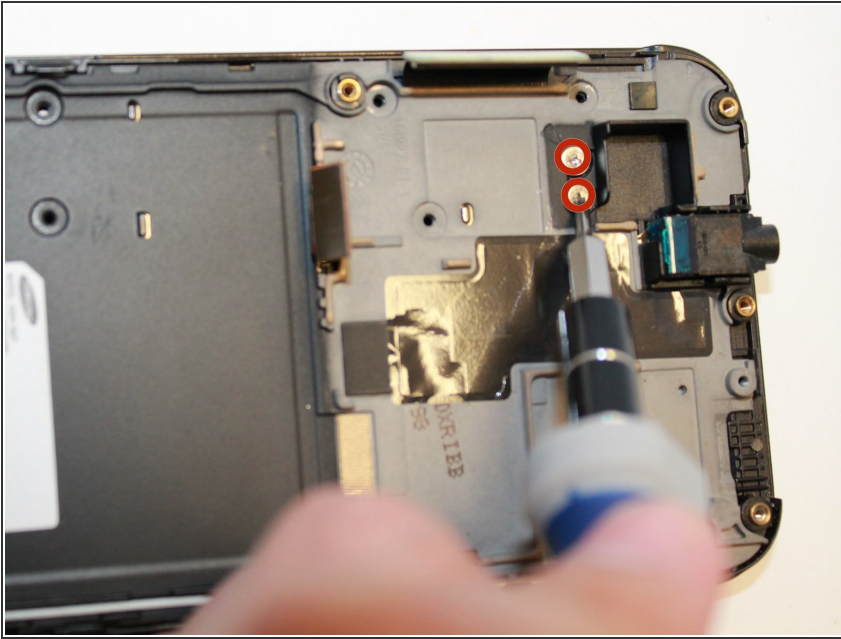
- Remove the eight screws using the #00 screw driver.

## Step 10



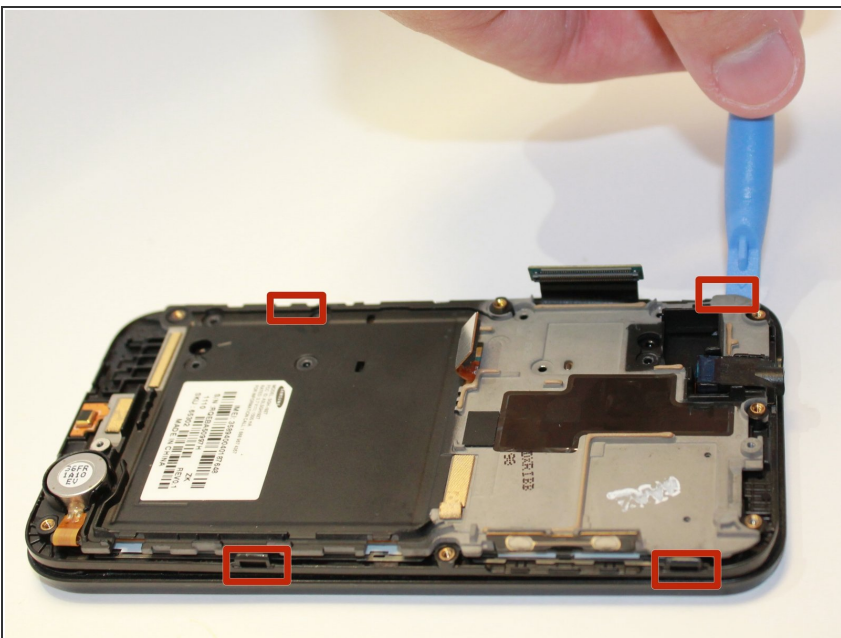
- Remove blue tape using the tweezers.

## Step 11



- Remove screws using the #00 screwdriver.

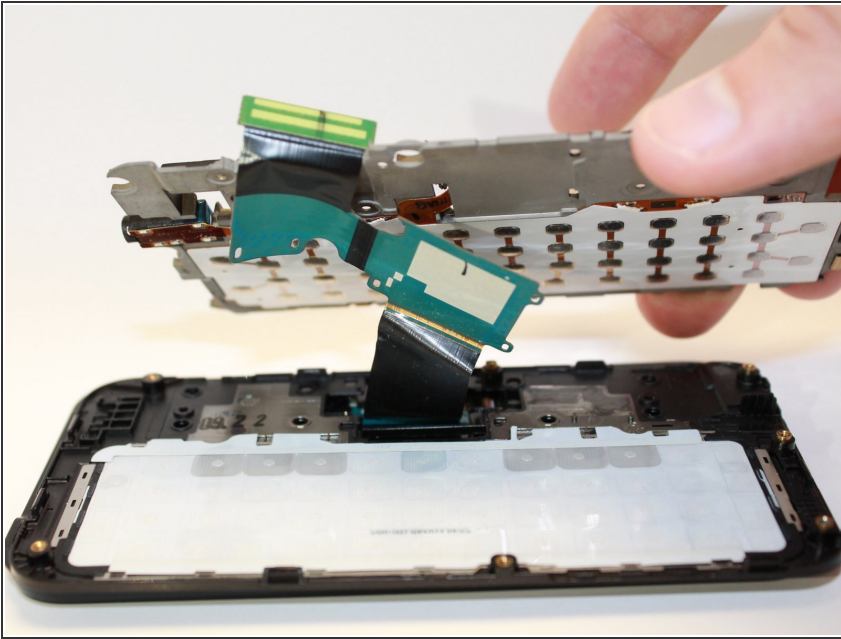
## Step 12



- Using the plastic opening tool, remove the back plate by prying on the four main points.
- ⓘ You may encounter difficulty at certain points. Work the plastic opening tool along the edge to keep back plate from closing again.

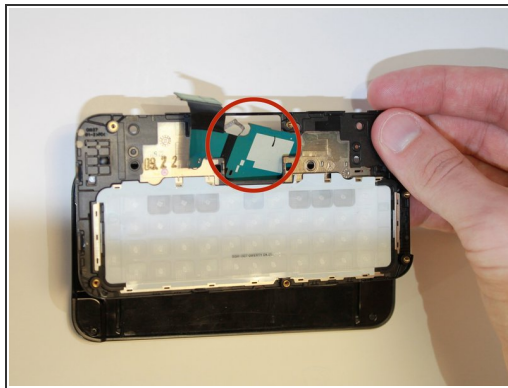
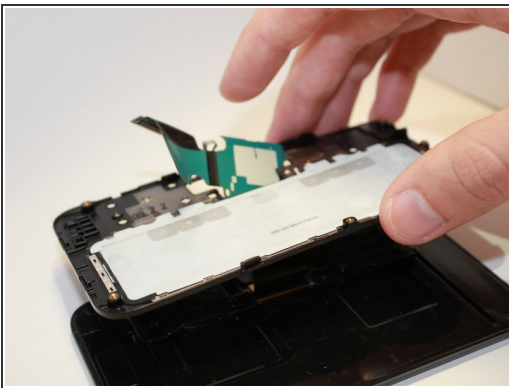


## Step 13



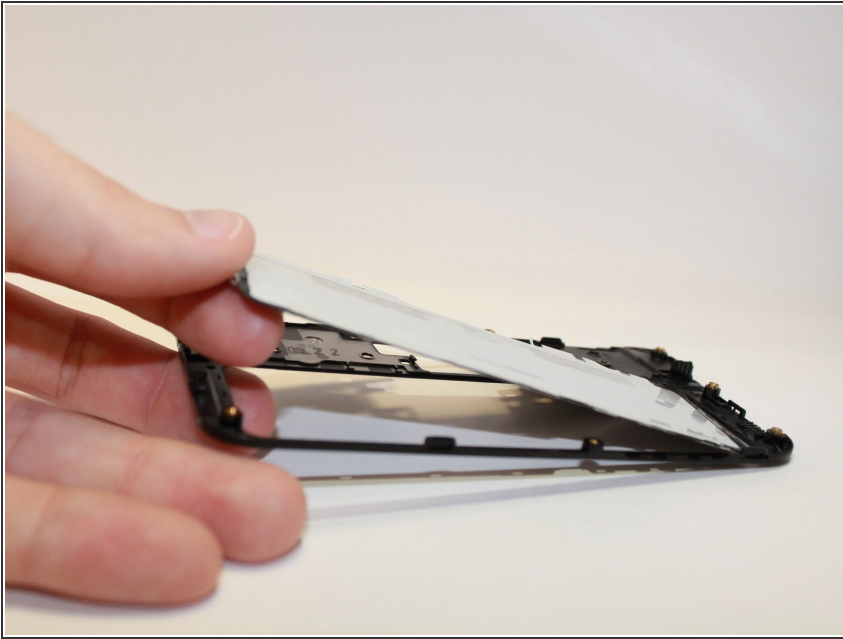
- Lift the back plate.
- To remove the attached flex cable, gently peel the flex cable connecting to the back plate.
- ① Flex cable is attached to the back plate with an adhesive.

## Step 14



- Slide the flex cable through the slot.
- Set the front plate down. Now you have free access to the keyboard.

## Step 15



- Manually lift the keyboard and replace with new keyboard.
- ⓘ Make sure the new keyboard is placed with the keyboard letters facing down, and the white back facing up.

To reassemble your device, follow these instructions in reverse order.