



Acer S200HL LCD Monitor Motherboard Replacement

Using the Acer S200HL LCD Monitor motherboard...

Written By: Jeffrey Kong



INTRODUCTION

Using the Acer S200HL LCD Monitor motherboard replacement and removal guide, this process will become easier using these simple iFixit steps.

TOOLS:

[Phillips #2 Screwdriver](#) (1)
[iFixit Opening Tool](#) (1)
[5 mm Hex Screwdriver](#) (1)

PARTS:

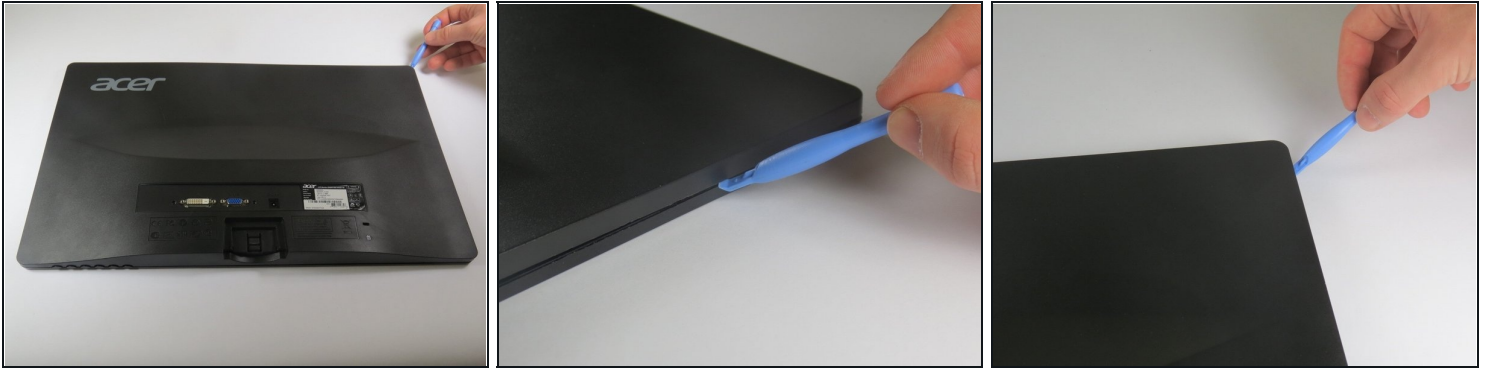
[Acer S200HL Motherboard](#) (1)

Step 1 — Removing the Stand



- Place the monitor screen face down.
- Firmly hold the base of the stand with one hand and the bottom of the monitor with the other hand.
- Pull the stand away from the monitor.

Step 2 — Removing the Back Panel



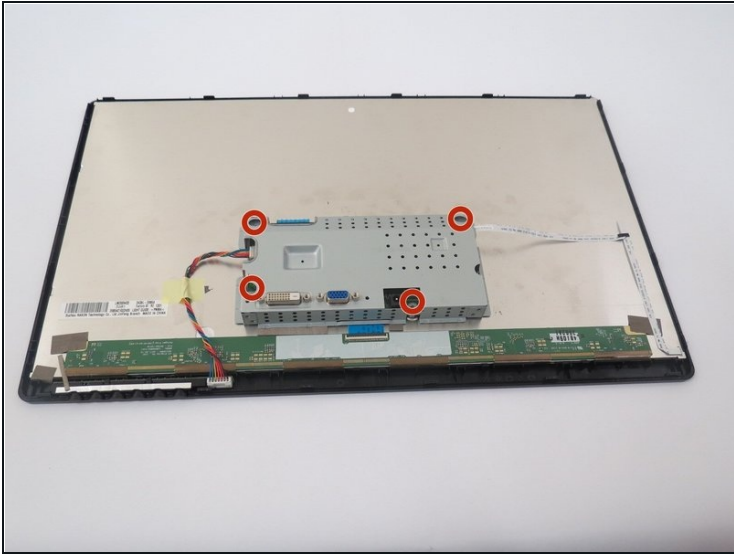
- Use the plastic opening tool to pry the back panel from the front panel.
- Start at one point of the crease and pry along the edge of the entire monitor for the best results.

Step 3



- Gently lift back panel away from the monitor.

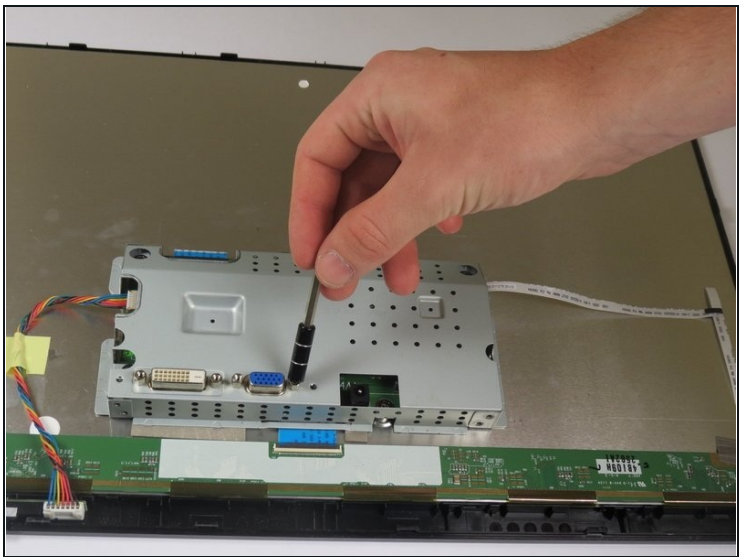
Step 4 — Removing Interior Motherboard Casing



⚠ Be sure to keep track of where you place your screws. A [magnetic mat](#) is great for keeping your screws in one spot.

- Unscrew the four 7.5 mm Phillips #2 screws connecting the motherboard to the metal casing.

Step 5



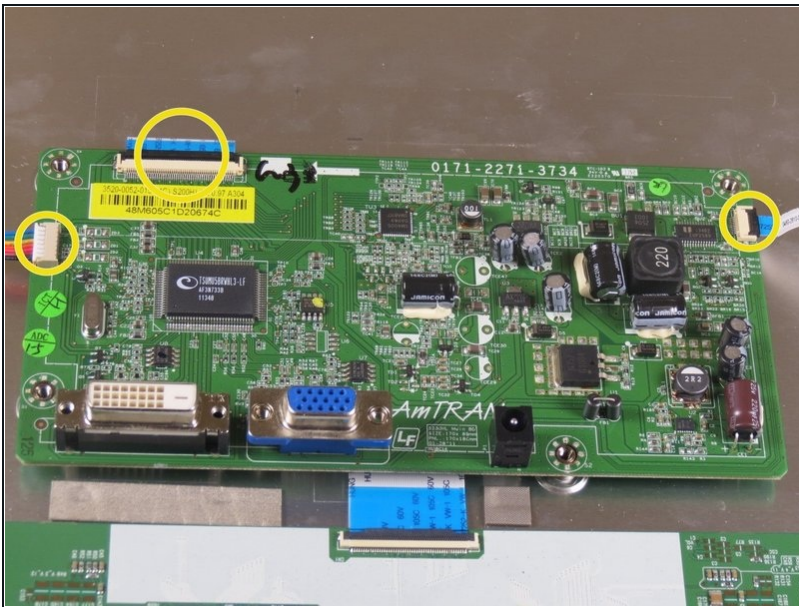
- Remove the four 10 mm hex screws.

Step 6



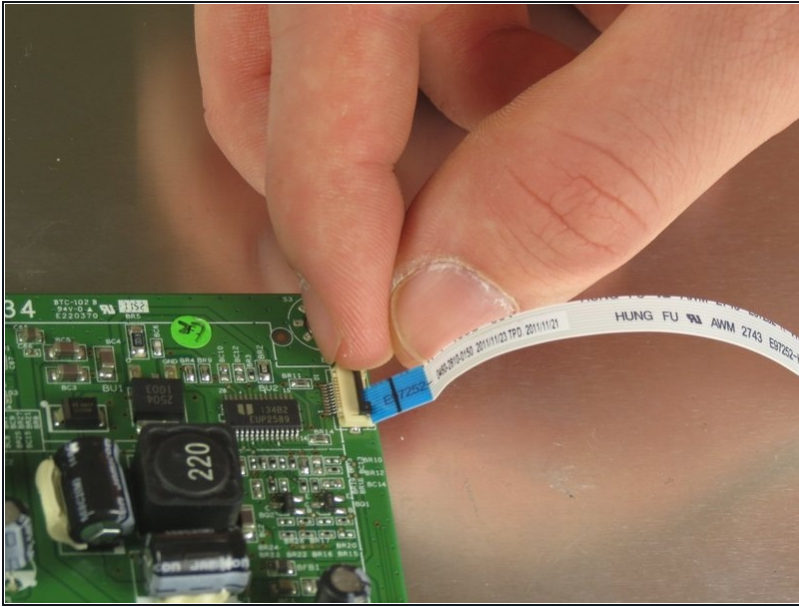
- Gently lift the motherboard casing from the monitor.

Step 7 — Removing the Connections to the Motherboard



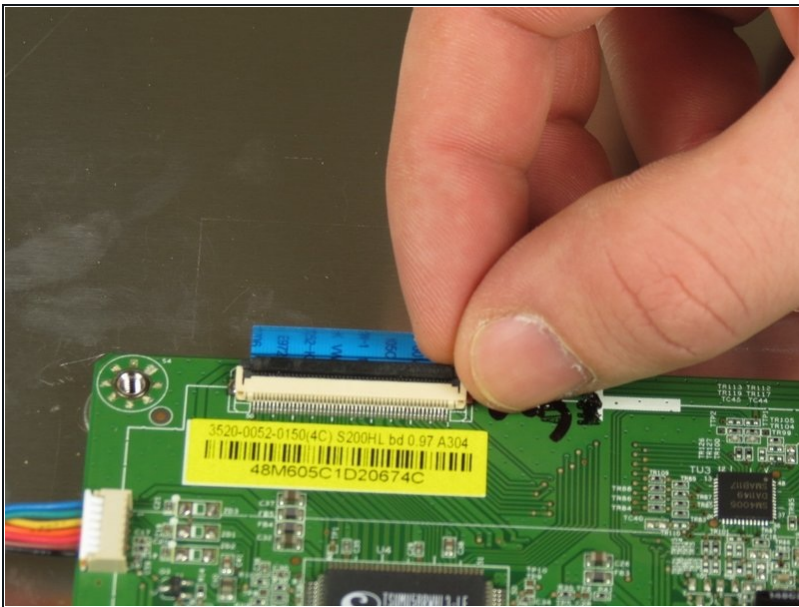
- The following steps circled in yellow are the locations for detaching the three connectors shown in the picture.

Step 8 — Removing the No Fuss Ribbon Cable Connector



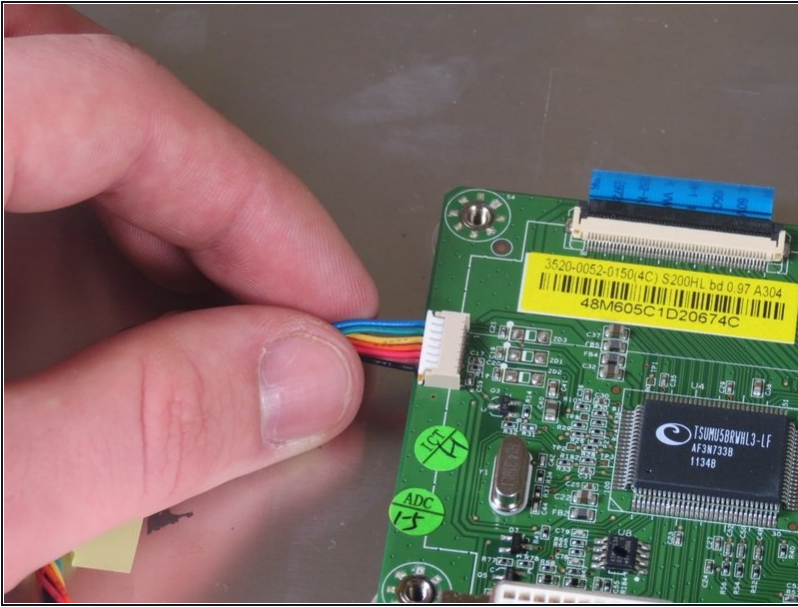
- Lift the black seal to release the small ribbon connector (the No Fuss Ribbon Cable connector) from the motherboard.
- ① The connector will be released from the motherboard immediately.

Step 9 — Removing the ZIF Connectors



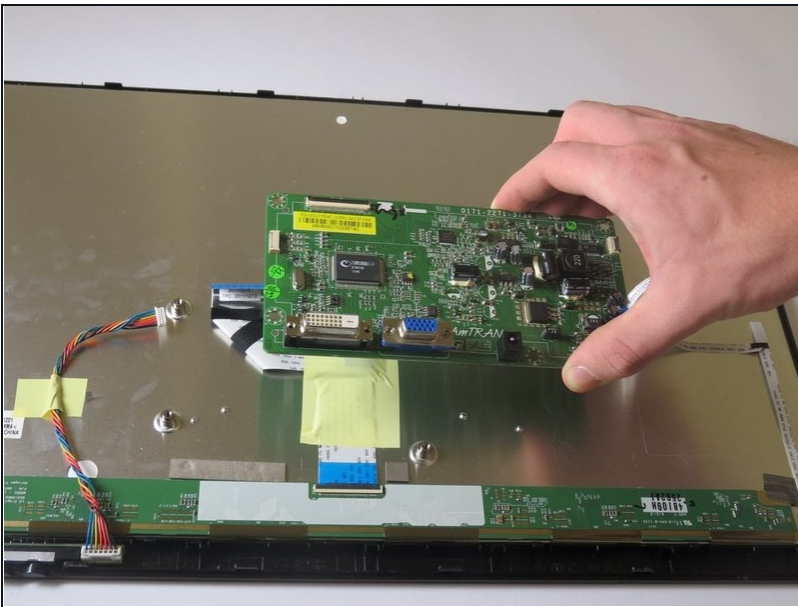
- Lift the black seal to release the large ribbon connector (the ZIF connector).
- ① The connector will be released from the motherboard immediately.

Step 10 — Removing the Bundled Cable Connector



- Pull the bundled cable connector gently away from motherboard.

Step 11 — Removing the Motherboard



- Gently lift the motherboard to remove it from the monitor.

To reassemble your device, follow these instructions in reverse order.