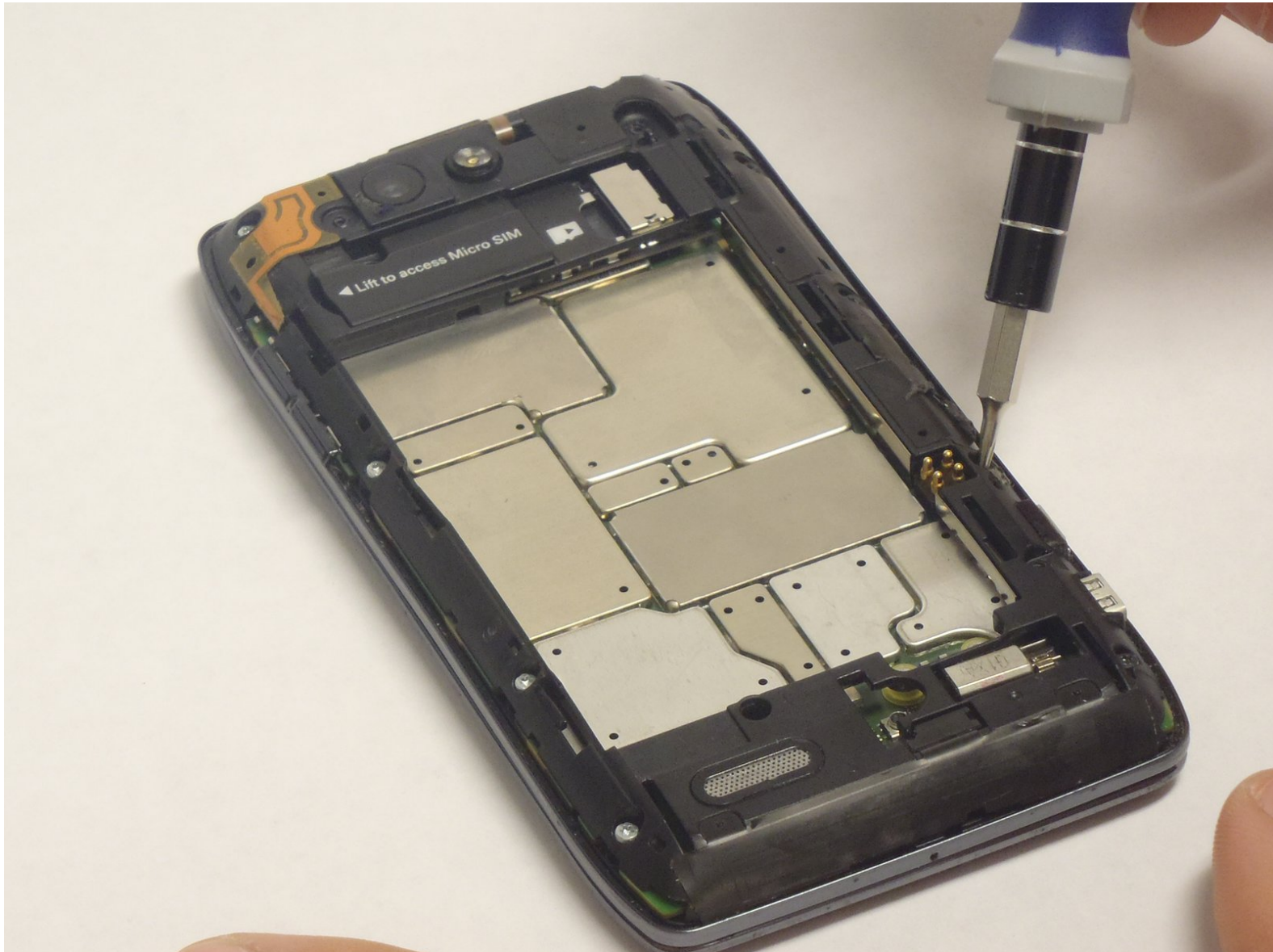




Motorola Droid 4 Motherboard Housing Replacement

This guide is intended to assist in the replacement of the Motherboard housing.

Written By: Javier



INTRODUCTION

This guide is for the replacement of the motherboard housing. The Motherboard housing encompasses the motherboard and holds it safely. The motherboard is the brain of the phone and should be handled carefully.

You will need to remove several torx head screws. Make sure to use the correct type.



TOOLS:

- [Motorola Rear Cover Removal Tool](#) (1)
 - [Spudger](#) (1)
 - [T5 Torx Screwdriver](#) (1)
 - [iFixit Opening Tools](#) (1)
-

Step 1 — Removing Rear Panel



To unlock the rear cover, insert the rear cover removal tool (packaged with your smartphone) in the hole near the back camera lens, then slide the cover down to remove.



If you have any problems unlocking or removing the rear cover, please take your smartphone to any Verizon Wireless store for assistance.

- Insert the rear cover removal tool, or a paper clip, in the hole near the back camera lens.
- Slide the cover down to remove.

Step 2 — Battery




- Remove the sticker on the rear compartment to reveal the battery.
- ⚠ Hold the battery with your thumb while removing the sticker or you might end up ripping the battery out of the phone, damaging the flex cable.

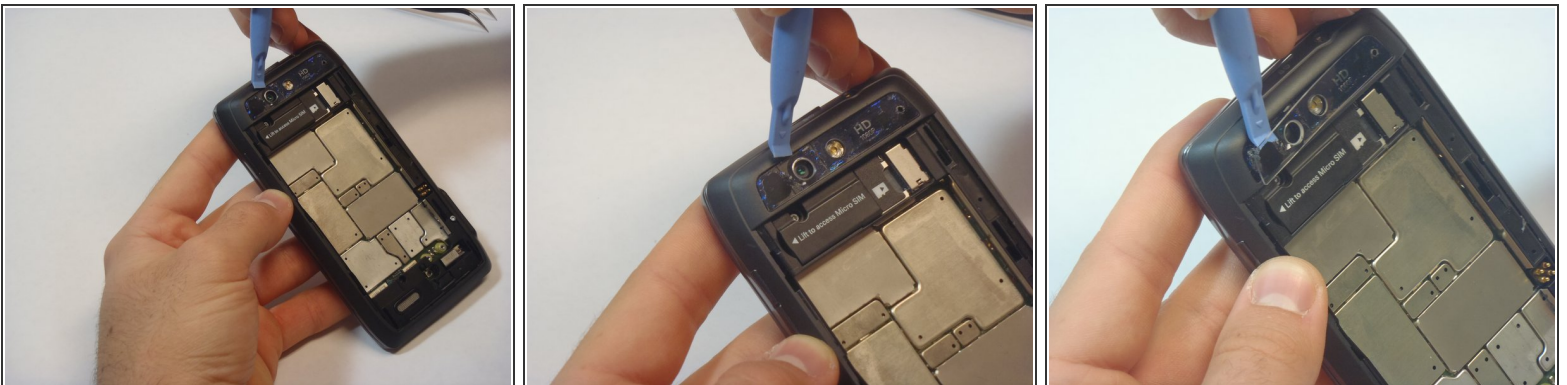
Step 3




- Use the [T5 Torx Screwdriver](#) to remove both 2.5 mm screws from the battery cable.
- Use the [Spudger](#) to unstick the battery.

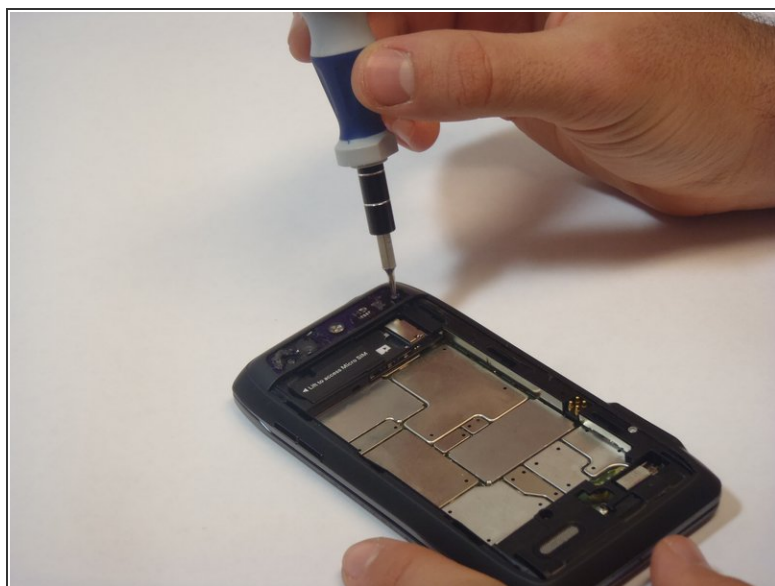
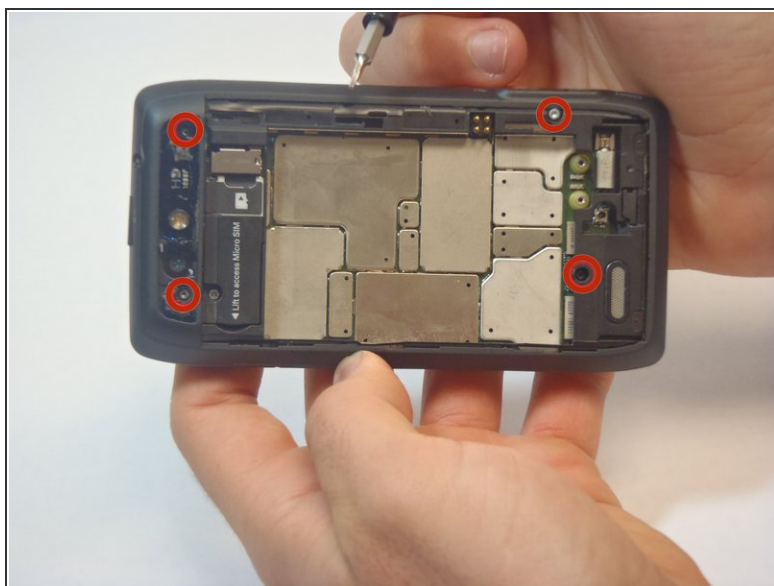
 It's difficult to remove the battery without a pry tool like the spudger because of the strong adhesive. If you try removing it with just your fingers, the battery may bend.

Step 4 — Camera Cover Removal



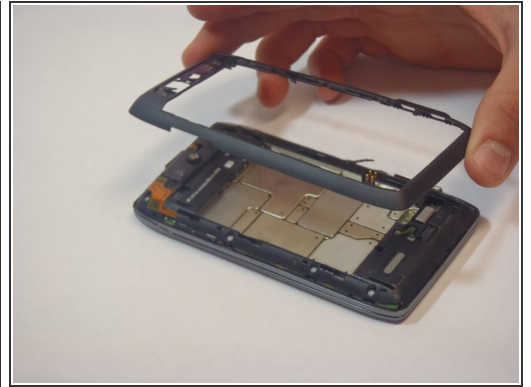
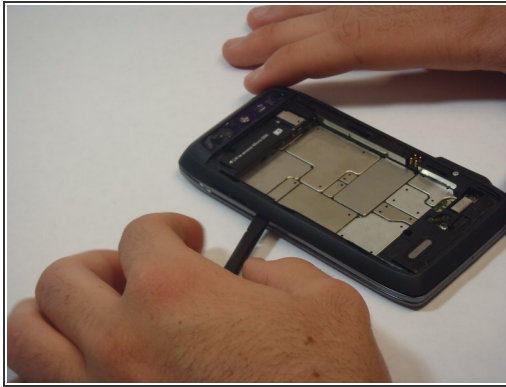
- Using the blue plastic opening tool, pry off the thin plastic camera cover.
-  The plastic cover is fragile, so proceed carefully.

Step 5 — Remove Screws



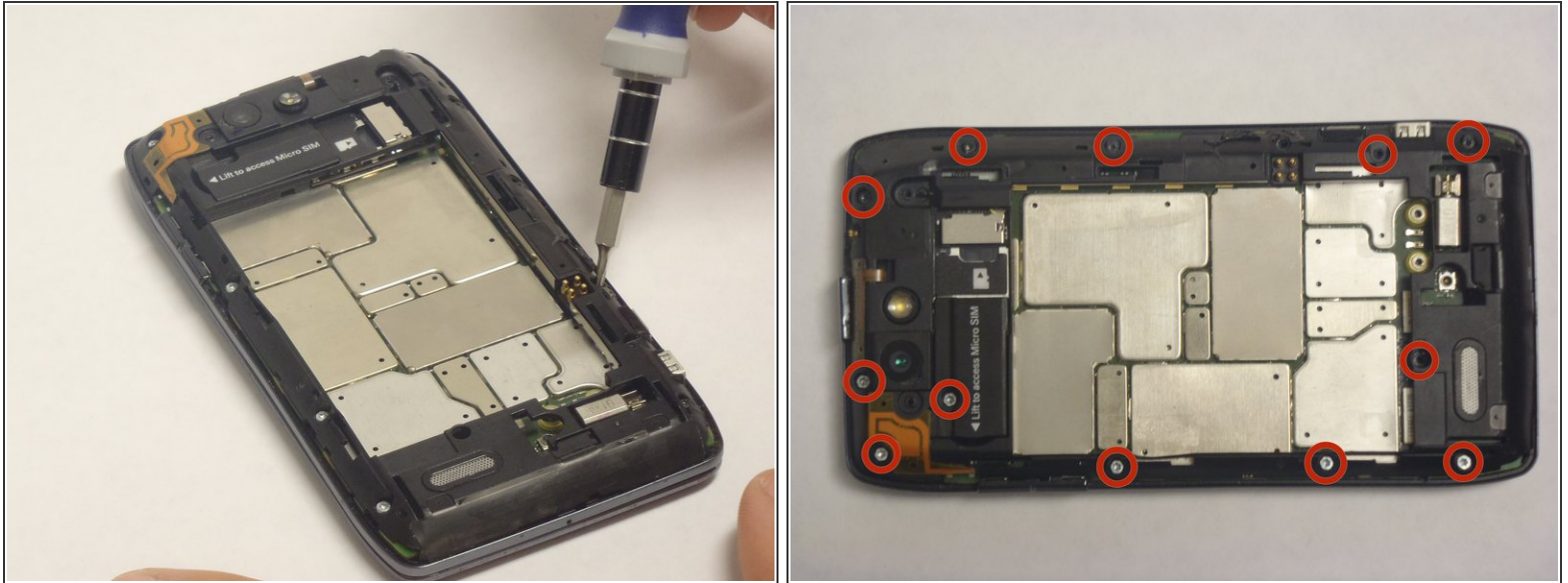
- Remove the four screws, indicated by the red circles, with the screwdriver and T5 Torx bit.
- ⓘ The screws are philips 2.5mm. One screw is a different color (silver) from the others (black).

Step 6 — Remove Bezel



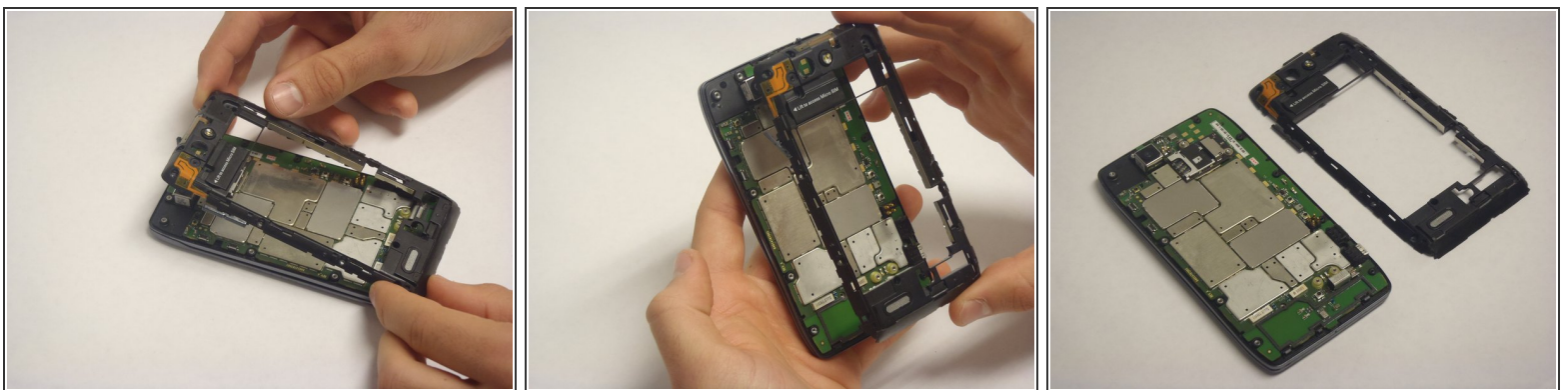
- Insert the spudger between the rear bezel and the main housing.
 - ⓘ The bezel is fragile, so proceed carefully.
 - Slide the spudger around all sides of the phone to separate the bezel from the housing.
 - Pry the bezel free.
- ⚠ Be careful of the adhesive that holds the bezel to the main housing. Prying too hard may damage your phone.

Step 7 — Removing screws



- Remove the 12 screws holding the housing in place using a T5 Torx screwdriver.
- Follow the red circles, indicated in the picture, to locate the screws.
- ⓘ The 12 screws are (silver) philips 2.5mm

Step 8 — Separation of the Housing from the Motherboard



- Separate the housing from the motherboard.
- ⚠ Be careful while separating the housing. The power and volume buttons are easily separated from the housing and can be damaged.

To reassemble your device, follow these instructions in reverse order.