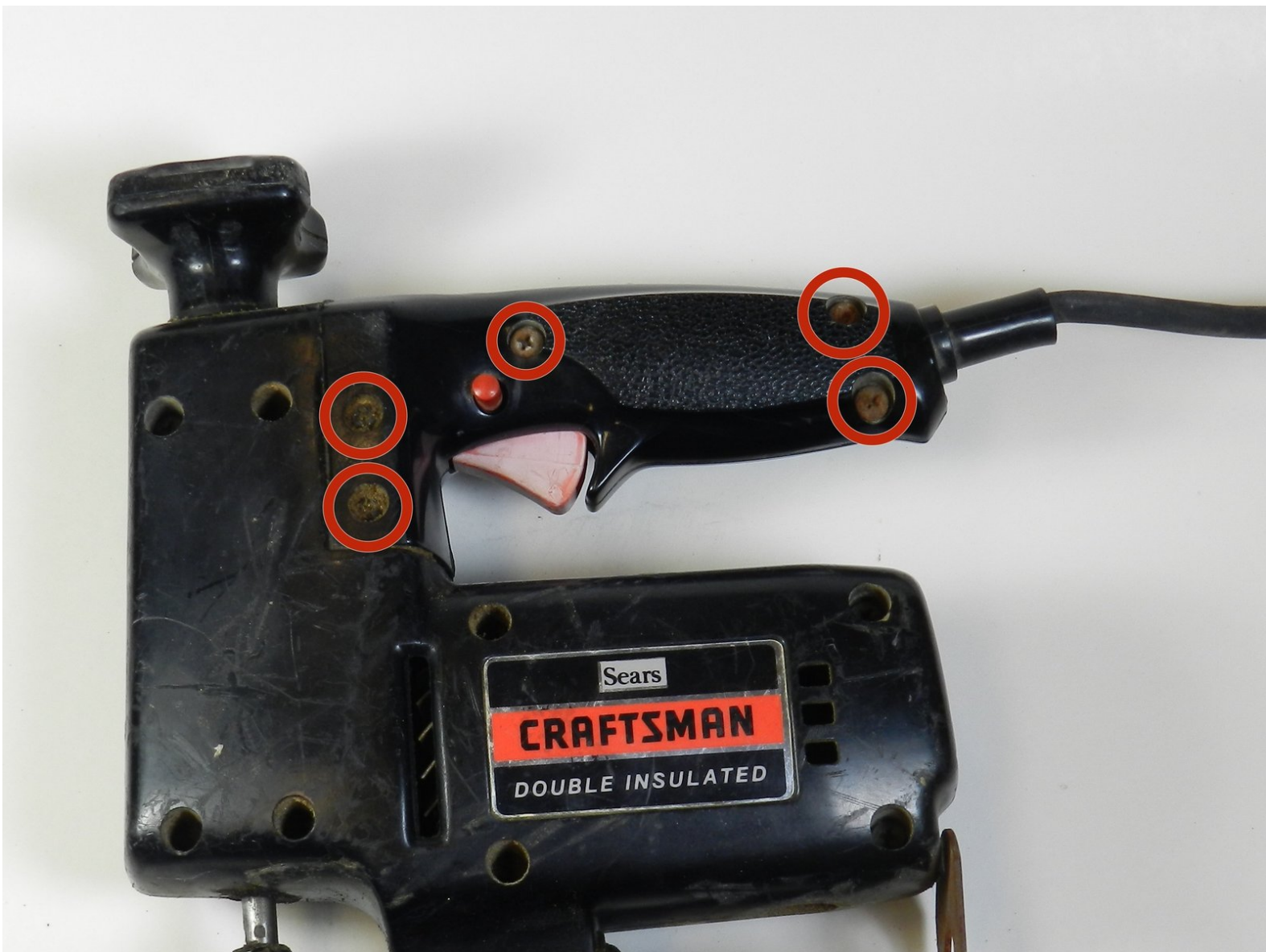




Craftsman Model 315.10721 Cord Replacement

This guide will show the proper steps for replacing the power cord on the Craftsman Model 315.10721.

Written By: Riley Hilliker



INTRODUCTION

WARNING: Once the power cord has been identified as the item that needs replacement, make sure that the device is disconnected from any power supply.



TOOLS:

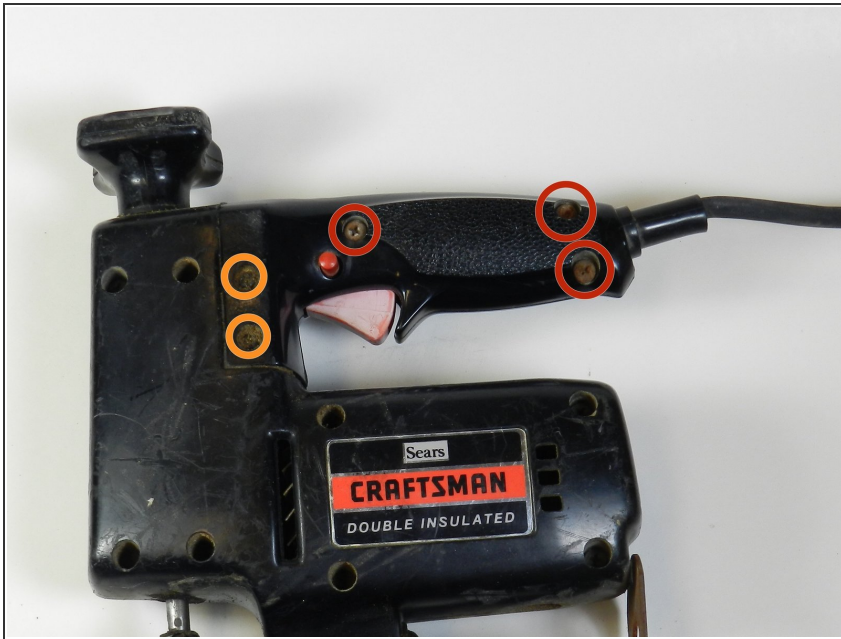
- [Phillips #1 Screwdriver](#) (1)
- [Phillips #00 Screwdriver](#) (1)



PARTS:

- [Craftsman Power Cord](#) (1)

Step 1 — Cord



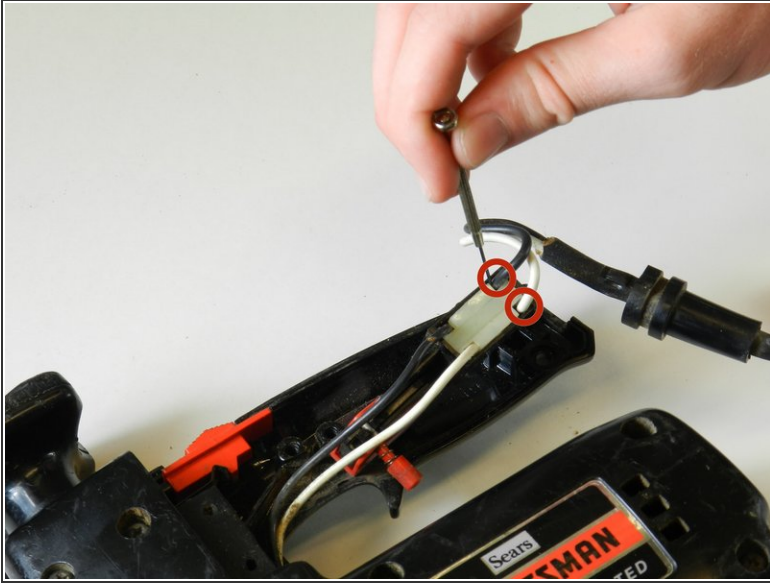
- Remove the two 1" Phillips screws using a #1 Phillips screwdriver.
- Remove the three 1/2" Phillips screws using a #1 Phillips screwdriver.
- Once the five screws are removed, lift the handle cover from the saw.
- ⓘ Each screw has a corresponding nut on the opposite side of the power saw

Step 2



- Remove the 1/2" Phillips screw that is securing the switch using a Phillips #1 screwdriver.

Step 3



- Using a Phillips #00 screwdriver or a small diameter screwdriver, gently insert it into the leads. When the screwdriver is inserted into the lead, it will release the wire.
- ⓘ The leads are where the black and white wires from the power cord are plugged in.
- Release both the black and white wires and gently pull them from the leads.
- ✦ To install the new cord, insert the wires of the new cord in the same way that they were removed.

To reassemble your device, follow these instructions in reverse order.