



Polaroid Onestep Close Up Primary Lens Replacement

Replace the primary imaging lens.

Written By: Christopher Collazo



INTRODUCTION

This lens is what focuses the light on the mirror, and by extension the film, when taking photos. The shutter lies directly behind it. It is very easy to replace, as it only requires the removal of the front plate to access, and is held in place only by grooves into which it snaps into place. This guide will illustrate how to remove this primary lens.



TOOLS:

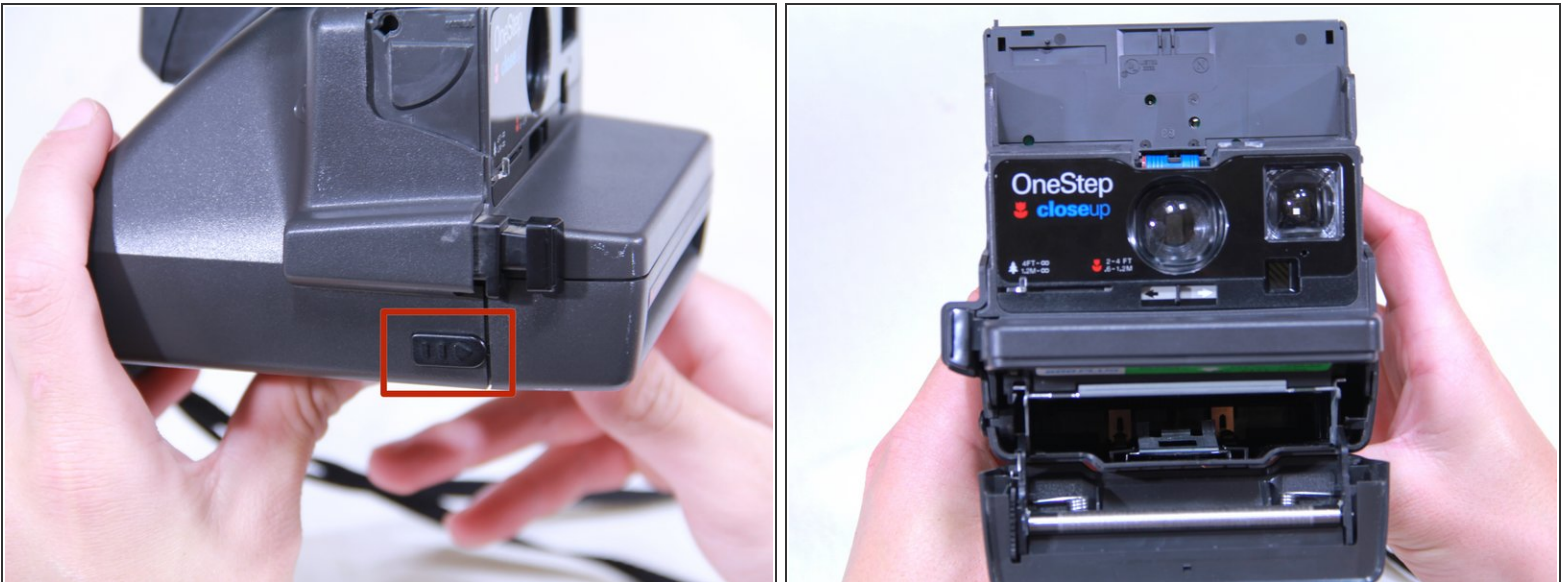
- [iFixit Opening Tools](#) (1)
 - [Spudger](#) (1)
-

Step 1 — Flash Assembly Removal



- Begin by opening the top of the camera (flash assembly) to a slight angle.
 - Next, angle the flash assembly slightly upward and pry off the connections carefully.
- ⚠ Be careful not to damage the ribbon cable. This is essential to the operation of the flash.

Step 2 — Opening Film Tray



- Slide the action button, on the bottom of the camera, to open the bottom.

Step 3 — Removing Face Plate



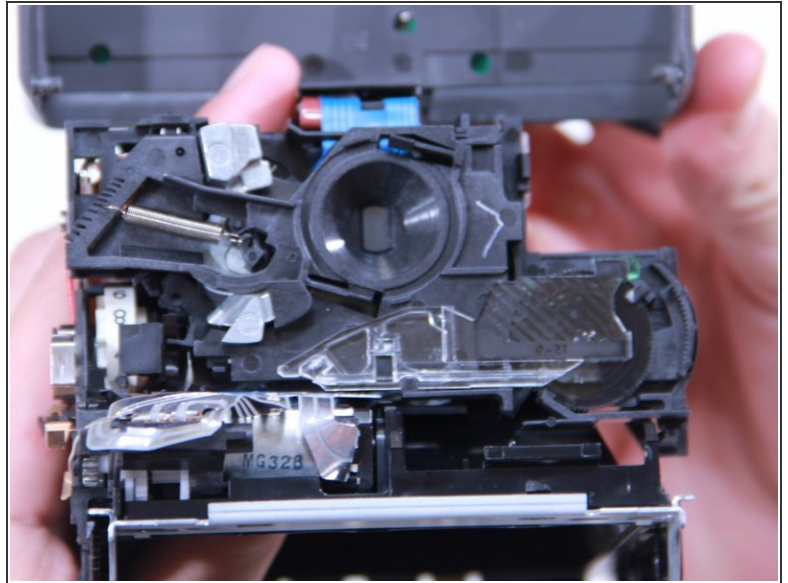
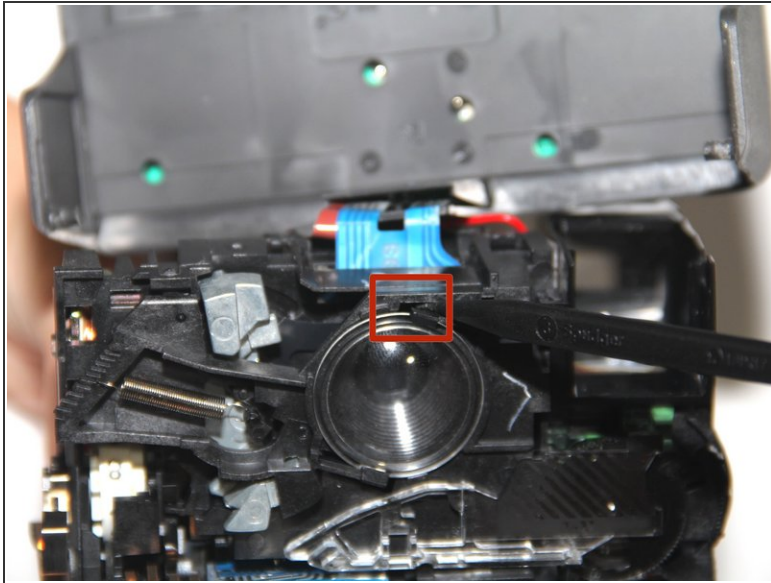
- Insert the blue plastic opening tool between the rear case and the plastic tabs directly under the shelf, and pry it loose.
- Pull off the face plate.

Step 4 — Primary Lens



- Once the front assembly is removed, the primary lens should be exposed without any trouble.

Step 5 — Removal of primary lens



- Use your spudger to leverage the lens from the groove at the top (red).
- Pry the lens loose. It may pop out, so have a method in place to prevent it from dropping.

To reassemble your device, follow these instructions in reverse order.